



# Mexborough Community Profile

**Well Doncaster**

**Community Led Health and Wealth**

Empowering people in Doncaster to live better, healthier, and happier lives.

[www.welldoncaster.uk](http://www.welldoncaster.uk)

Well Doncaster  
**Community  
Wealth Builder**

Well Doncaster  
**Be Well**



**City of  
Doncaster  
Council**

# Contents

<b>This Report .....</b>	<b>4</b>
<b>One Page Summary .....</b>	<b>6</b>
Assets .....	7
Asset Maps .....	7
Population Health Management .....	9
Assets in the Community .....	9
<b>Community Insight.....</b>	<b>12</b>
Appreciative Inquiry .....	12
Doncaster Talks .....	18
Ward Members.....	18
<b>Health and Wealth .....</b>	<b>19</b>
Deprivation .....	19
<b>Wealth Inequalities.....</b>	<b>21</b>
Employment .....	22
Fuel Poverty .....	24
Food Poverty .....	24
The Bread-and-Butter Thing .....	25
Citizens Advice Doncaster Borough .....	26
<b>Health Inequalities.....</b>	<b>28</b>
Life Expectancy .....	28
Long Term Health Conditions .....	28
Incidence of Death.....	28
Alcohol.....	29
Smoking.....	30
Childhood Development .....	31
Childhood Obesity.....	31
Learner Outcomes .....	32
Pupil Lifestyle Survey.....	32
Family Hubs .....	33
<b>Physical activity .....</b>	<b>35</b>
Physical Activity Children and Young People.....	36
<b>Community Information.....</b>	<b>36</b>
Population .....	36
Age Profile .....	36
Ethnicity and Language.....	36

Housing .....	37
<b>Community Safety .....</b>	<b>38</b>
The Safer Stronger Doncaster Partnership .....	38
Community Voice / Key Safety Concerns .....	38
Anti-Social Behaviour .....	39
Vulnerable Victims .....	39
Wellbeing Service .....	40
Community Investment .....	41
<b>References .....</b>	<b>42</b>
<b>Appendix .....</b>	<b>42</b>



## This Report

This report uses a population health management approach to looking at the health of a whole group of people, like a town, neighbourhood, or community, instead of just focusing on one person at a time. It is designed to help community leaders, services, residents etc. understand what strengths of both people and place, whilst also looking into what health challenges are common in that group, what services are needed most, and where help is lacking. By using data and trends, this Community Profile can inform tailored ways to keep people healthy, prevent illness, and make sure everyone gets the care they need. By focusing on prevention, early intervention, and coordinated care, together we can build healthier communities and support long-term, sustainable improvements in public health. The first Community Profile was written in 2023 and has been refreshed in 2025 to reflect the current opportunities and challenges of the community.

This report focuses on the community Mexborough, in the South locality of the city and begins with a summary outlining key information and priorities. This document includes conversations with communities, ward members, community organisations, faith groups, residents and other organisations who work in the area. This document is shared with the intention of supporting those conversations and sharing information that might not be readily available to local people.

To ensure each community is represented as accurately as possible, where possible, separate data and illustrations have been used. Data that is only available at ward level will be stated when included. Indirectly Standardised Ratios (ISRs) have been used throughout this document and have been used to compare data at community and ward level, against a reference population. ISRs show how often an event (such as deaths or hospital admissions) occurs in a population compared to what would be expected in a reference population, after adjusting for age differences. England is used as the reference population for ISR's throughout the document.

# Mexborough



39.2% of residents live in poverty, including 57.4% of children and 25.2% of older people



7.5% are unemployed, and nearly half of adults are economically inactive



Life expectancy is lower than Doncaster and England averages 73.4 years for men and 79.2 years for women



Smoking rates are significantly high at 20.9% in Mexborough



41.7% of residents never engage in moderate exercise, and active travel is limited



30.6% of adults are obese, and childhood obesity is high, with 25.9% of children overweight or obese at reception age



## One Page Summary

Mexborough is the largest community in Doncaster with a population of around 15,600 and approximately 7,000 households, mainly terraced and semi-detached properties. It is a densely populated area with high levels of social housing and significant deprivation. The community is predominantly White British (97.3%) and benefits from strong transport links and assets such as Montagu Hospital, schools, and active community hubs.

Mexborough ranks among the most deprived areas in Doncaster and 39.2% of residents live in poverty, including 57.4% of children and 25.2% of older people, all significantly above borough and national averages. Unemployment is high at 7.5%, and nearly half of adults are economically inactive. Educational attainment is low, with 29% of adults having no qualifications and only 17.6% qualified to Level 4 or above. Employment is concentrated in low-skill, low-pay roles, and benefit dependency is widespread. Fuel poverty affects over 22% of households, and food insecurity remains a major issue, with strong reliance on local foodbanks and initiatives like The Bread-and-Butter Thing. Rent arrears are the highest in Doncaster, reflecting financial strain across households.

Health outcomes in Mexborough are among the poorest in the borough. Life expectancy is significantly lower than Doncaster and England averages, 73.4 years for men and 79.2 years for women, and healthy life expectancy is reduced, with limiting illness starting around age 55. Chronic conditions are prevalent, particularly respiratory diseases, which are the leading cause of death and the highest in Doncaster. Smoking rates are extremely high at 20.9%, contributing to elevated Chronic obstructive pulmonary disease (COPD) and lung cancer admissions. Alcohol-related harm and obesity are also major concerns: 30.6% of adults are obese, and childhood obesity is high, with 25.9% of children overweight or obese at reception age, rising to 42% by Year 6. Mental health issues, including depression and self-harm, are more common than borough averages, and preventable mortality rates are significantly higher.

Physical inactivity compounds these challenges, 41.7% of residents never engage in moderate exercise, and active travel is limited, with most residents relying on cars for commuting. These patterns, combined with deprivation, position Mexborough as a priority area for targeted health interventions under the Get Doncaster Moving Strategy.

### Key Priorities:

- Reduce poverty and income deprivation, particularly among children.
- Address high mortality rates and respiratory disease prevalence.
- Improve healthy life expectancy through smoking cessation, obesity reduction, and alcohol harm prevention.
- Increase physical activity and promote active travel.
- Enhance educational attainment and employment opportunities.

## Assets

### Asset Maps

The maps below show the different type of assets found across Mexborough. These have been separated into Community, business and health assets.

It is recognised that work is needed in the community to expand the understanding of who, how and what is accessed in the area. Greater knowledge of the identity of each community/ward will allow a more appropriate and effective response to community needs. Mexborough remains a priority area for South Doncaster and ongoing work will continue to support it.

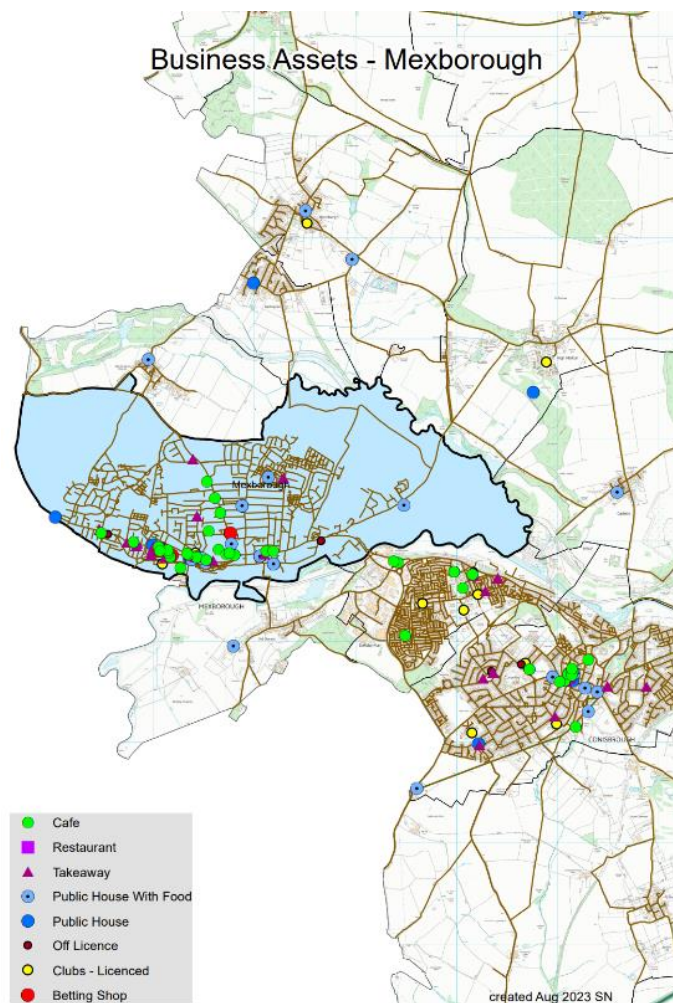


Figure 1. Business Assets Mexborough (2024)

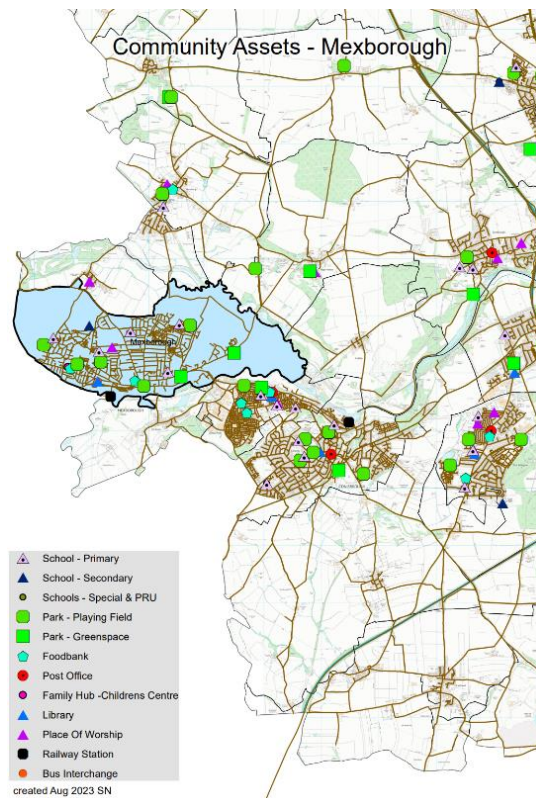


Figure 2. Community Assets Mexborough (2024)

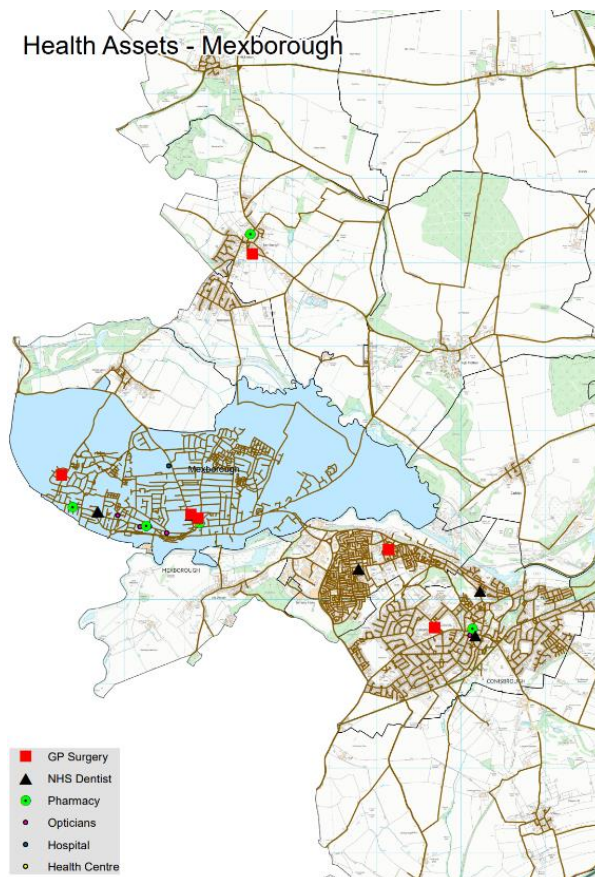


Figure 3. Health Assets Mexborough (2024)



## Population Health Management

It is vital to understand the impact on the community of nationwide influencing factors such as the COVID19 pandemic and cost of living crisis as well as local and regional issues and opportunities. Understanding community organisations and other assets operating in the community helps up to ensure appropriate and targeted support can be offered, and work can be implemented to manage any gaps or risks associated with changes. Well Doncaster undertake regular population health management insight with community organisations in Hexthorpe, identifying their current status and needs, and work with each group and partners to meet their goals. This is a living document and will be updated and adapted as needs are met and change. If you would like more detail on this, please contact [welldoncaster@doncaster.gov.uk](mailto:welldoncaster@doncaster.gov.uk)

## Assets in the Community



<b>Institutions (Schools/colleges etc.)</b>	<b>Physical space (Parks, car parks etc.)</b>	<b>Local Economy (Local profit Businesses)</b>
Schools: <ul style="list-style-type: none"> <li>New Pasture Primary School</li> <li>Mexborough School</li> <li>Windhill Primary School</li> <li>Montagu Academy</li> <li>Highwoods Academy - Provision for disability support to children Parenting courses National curriculum Ofsted inspected Qualified trained staff Term time only At Highwoods Early Years Centre we offer 15 hours a week for funded 2,3,4-year-olds. We are committed to provide equality of opportunities for all children and families, regardless of each individual background. We aim to work with families and consult the families, should the needs arise to include signposting and working in partnership with outside agencies and organisations to help the development of each individual child within our setting. 01709 587327</li> <li>St Johns C Of E Infants &amp; Junior School</li> </ul>	Green Space: <ul style="list-style-type: none"> <li>Football Pitch</li> <li>Pitt Street Park</li> <li>Castle Hill Park</li> <li>Athletic Field</li> <li>Rocket/Clayfield</li> <li>Schofield Street Field</li> <li>Park road Field</li> <li>Kings Road Field</li> <li>Highwood road Field</li> <li>Thomas Street</li> <li>Manvers Park</li> </ul> Communal halls & Centre: <ul style="list-style-type: none"> <li>St Ledge Derwent hall- Tenants Club and Bing meet twice per week</li> <li>Bhatia Centre – Runs over 55 bingo, SMILE</li> <li>Highwoods Community Base -</li> </ul>	Food & Beverage: <ul style="list-style-type: none"> <li>Boy and Barrel</li> <li>Goa Spice</li> <li>Greggs</li> <li>Corner Pocket</li> <li>Empress Building</li> <li>Mai Thai</li> <li>Wetherspoons</li> </ul> Shops/ Supermarkets: <ul style="list-style-type: none"> <li>Farmfoods Mexborough</li> <li>Lidl</li> <li>Factory Foods</li> <li>Heron Food</li> <li>Poundland (recently selling frozen foods)</li> <li>Indoor Market (various stalls)</li> <li>Outdoor Market (Various Stalls)</li> </ul> Fitness & Gym facilities: <ul style="list-style-type: none"> <li>Dearne Leisure centre</li> </ul>

<b>Institutions (Schools/colleges etc.)</b>	<b>Physical space (Parks, car parks etc.)</b>	<b>Local Economy (Local profit Businesses)</b>
<ul style="list-style-type: none"> <li>The Laurel Academy</li> <li>Mexborough Park Road Infants School</li> </ul> <p><b>Health</b></p> <ul style="list-style-type: none"> <li>Montagu Hospital</li> <li>Mexborough New Surgery</li> <li>Mexborough Health Centre</li> <li>Mexborough Medical Practice</li> <li>Mexborough Dental Surgery</li> <li>Genix Healthcare Dental Clinic (Mexborough)</li> <li>Secret Smile Orthodontics</li> </ul> <p><b>Emergency Services</b></p> <ul style="list-style-type: none"> <li>Police Station</li> </ul> <p><b>Other:</b></p> <ul style="list-style-type: none"> <li>Royal British Legion - Branch 43 Helena Street, Mexborough, S64 9PF 07958239405 Royal British Legion</li> <li>Mexborough Family Hub</li> <li>Aspire</li> <li>Library – Runs sessions such as Mexborough craft, neighbourhood meetings, B: friend, Mind, We Create</li> <li>Playgroup</li> <li>Scouts</li> <li>Beavers</li> <li>Mexborough Business Centre – Runs Dementia Café</li> </ul> <p><b>Religious:</b></p> <ul style="list-style-type: none"> <li>St John's Mexborough</li> <li>New Oxford Road Church</li> <li>Blessed English Martyrs R C Church</li> <li>Mexborough Spiritualist Church</li> <li>Mexborough Life Church</li> <li>Baptist Church – run sessions such as Ava Lunch, Mexborough Activities Cafe</li> </ul>	<p>Identify cost effective ways in which to meet the needs of the local community children living in the area of Highwood estate</p> <ul style="list-style-type: none"> <li>The Willows Community Centre – sessions run in the centre such as SMILE sessions and foodbank.</li> </ul> <p><b>Other:</b></p> <ul style="list-style-type: none"> <li>Dearne Valley Leisure Centre</li> <li>Cosy Cinema</li> <li>Cricket Ground</li> <li>Tennis Pitch</li> </ul>	<ul style="list-style-type: none"> <li>Grafters Ironworks Gym</li> <li>ATF Training</li> <li>The Personal Training Room</li> <li>SB Promotions</li> </ul> <p><b>Care homes and day centres</b></p> <ul style="list-style-type: none"> <li>Clarence House</li> <li>The Bhatia Centre</li> <li>Mexborough Day Centre</li> </ul> <p><b>Other:</b></p> <ul style="list-style-type: none"> <li>B &amp; M Mexborough</li> <li>Specsavers Mexborough</li> <li>Travis Perkins Mexborough</li> <li>Pettits Mexborough</li> <li>Superdrug Mexborough</li> <li>Coral Mexborough</li> </ul>



INDIVIDUALS (Key Individuals in the community)	ASSOCIATIONS Local Groups/Clubs	STORIES (Good news stories)
<p>Eileen Cooper – Eileen now retired from Neighbourhood watch</p> <ul style="list-style-type: none"> <li>Jill Arkley – Links4Youth, connected with the younger generation. Ex ward member</li> <li>Joanne Arkley - Links4Youth, connected with the younger generation.</li> <li>Adam Lynch – Love Mexborough</li> <li>Denise Lancaster – Baptist Church</li> <li>Billy Whitehead – Mind over matter founder. Licenced coach</li> <li>Ryan Matthews – Mind over matter founder. Licenced coach</li> <li>Paul Cummins – Active Deane</li> <li>Bev Jones – Zumba - Mind Over Matter – founder, REPs instructor</li> </ul> <p>Councillors</p> <ul style="list-style-type: none"> <li>Antony Dodds</li> <li>Brendan Megaw</li> <li>John Reed</li> </ul> <p>PCSO's</p> <ul style="list-style-type: none"> <li>Jon Crossley</li> <li>Pete Ely</li> </ul>	<p>Support:</p> <ul style="list-style-type: none"> <li>Mexborough Family Hub – Supporting families, babies, and parents, MFH run the following sessions, Sensory Fun, Baby Chatter Baby Play, Baby Massage, growing friends, Food bank, First Friends, Book Chatter Book Play, Stop Smoking Pregnancy, Breast Start.</li> <li>The Spirit of Mexborough – provides community events and opportunities in Mexborough.</li> <li>Food Aware – Providing food to those in poverty. Foodbank runs every Friday 10-12pm at the family hub. Ran by Sean Gibbons <a href="mailto:sean.gobbons@doncaster.gov.uk">sean.gobbons@doncaster.gov.uk</a></li> <li>Support for young people with various activity sessions running Monday-Thursday at Highwoods community base by Joanne Arkley</li> <li>B: Friend – Elderly social club, runs from Mexborough Library every Friday 2.30pm-4.30pm <a href="mailto:info@letsbfriends.org.uk">info@letsbfriends.org.uk</a></li> <li>Fibromyalgia Peer groups – every 2<sup>nd</sup> Friday of month at Mexborough surgery ran by well Doncaster and PCN</li> <li>Mind – Meetings and social café in the library, Thursday 10.30-3pm 01709 578764</li> <li>Aspire Drug &amp; Alcohol Services – Mondays at hall gate centre 1pm-4pm. 01302 303900.</li> <li>SMILE - Bhatia SMILE &amp; Mex SMILE camo provides day activities for older people, older people with learning disabilities and people living with dementia. At SMILE we facilitate activities with local people and children, which bring generations together to grow <a href="mailto:Bhatia.Smile@doncaster.gov.uk">Bhatia.Smile@doncaster.gov.uk</a></li> <li>Mexborough Day Centre - Day care facilities help older or disabled people live independently in their own homes for as long as possible. Centres are open Monday to Friday 8.30am to 4.30pm. Held at the <a href="mailto:centreadultcontactteam@doncaster.gov.uk">centreadultcontactteam@doncaster.gov.uk</a></li> <li>Mexborough Activities Café - The Dementia Cafe provides information about living with dementia and other services available locally in an informal and comfortable environment. Held at Baptist Church - <a href="mailto:jane.owen@alzheimers.org.uk">jane.owen@alzheimers.org.uk</a></li> <li>Dementia Café – Ran at Business centre by Alzheimer's Society <a href="mailto:doncaster@alzheimers.org.uk">doncaster@alzheimers.org.uk</a></li> <li>Women's Institute – 2<sup>nd</sup> Wednesday of month at The Willows Community Centre, 01302 325829</li> </ul> <p>Other:</p> <ul style="list-style-type: none"> <li>Love Mexborough – runs community events. Ran by Adam Lynch <a href="mailto:hello@lovemexborough.org">hello@lovemexborough.org</a></li> <li>Highwoods Community Base - Identify cost effective ways in which to meet the needs of the local community, in particular, children living in the area of Highwood estate -</li> <li>Allotments</li> <li>Mexborough First</li> </ul> <p>Sport clubs:</p>	<p><b>Stories</b></p> <p>E Cooper – More physical activity since lockdown  <i>... After being in my bungalow for two weeks, I have been walking for once a day around the area where I live for a short 15 minutes and doing a few exercises to get my body fitter than it has been. I fill my time by reading, emailing, doing jigsaws, sewing masks for Angela and others, watching Tv, and especially love watching Netflix films.</i></p> <p><i>Multiple good news stories from food aware which is shared weekly on the Facebook page <a href="https://www.facebook.com/mexboroughfoodbank/">https://www.facebook.com/mexboroughfoodbank/</a></i></p>

INDIVIDUALS (Key Individuals in the community)	ASSOCIATIONS Local Groups/Clubs	STORIES (Good news stories)
	<ul style="list-style-type: none"> <li>Scorpion Taekwondo 07380193376, <a href="mailto:scorpiontkdmex@outlook.com">scorpiontkdmex@outlook.com</a></li> <li>Mexborough Athletic Sports Club - <a href="mailto:info@mexboroughathletic.org.uk">info@mexboroughathletic.org.uk</a> 01709583426</li> <li>Mexborough Town F.C.</li> <li>Mexborough Rovers FC - U13 Mexborough Rovers U13 Category: 11-a-side U 12 Mexborough Rovers U 12 Category: 9-a-side U10 Mexborough Rovers U10 Category: 7-a-side U7 Mexborough Rovers U7 Category: 5-a-side</li> <li>Mexborough Tennis - 07912 873758</li> <li>Mexborough Cricket Club - Philip Barker Hon. Secretary <a href="mailto:mexboroughhcc@hotmail.co.uk">mexboroughhcc@hotmail.co.uk</a> 07543905661</li> </ul>	

## Community Insight

### Appreciative Inquiry

The Well Doncaster Team undertake Appreciative Inquiry (AI) within communities to gather insight to support code signing action plans with the community. Armstrong (2020) suggests that reframing the questions considering a crisis like Covid-19 and drawing on strengths and assets from past positive experience will help participants as they restructure their community. The AI questions are structured to pull out the successes of the past and present, to seek new potentials and possibilities and build on those through the Dream and Design stages.

Community Explorers spent 2 weeks in June 2022 talking to people in Mexborough and made over 42 contacts with members of the community. Participants were invited to join in the future stages and there was a mixture of preference for evening and day sessions. It was agreed these would alternate on a monthly basis. The Appreciative Inquiry included the following steps:

1. **Discovery Phase** – This involved engagement with the residents of Mexborough to find out what is working well in the community. Responses were themed to allow priorities of the community to be established.
2. **Dream** – Residents and key stakeholders were invited to attend an initial workshop to discuss what ideas they have for their community and how these will meet the priorities highlighted in the discovery phase.
3. **Design** – All attendees were invited back for a second workshop to develop an action plan to direct work for the community.
4. **Destiny** – A collaborative way of working established and investing resources to meet the actions from the previous phase.

Thematic analysis of Appreciative Inquiry involves identifying and examining recurring themes or patterns within the positive stories, experiences, and perspectives shared by community members. It seeks to understand the strengths, values, and successful



aspects that contribute to a thriving community. The process involves extracting common themes from narratives gathered through AI, allowing for a deeper understanding of the community's assets and aspirations. Through this analysis, communities can build on their strengths to facilitate positive change and shape future support and investment.

### **Thematic Analysis for Mexborough 2021- March 2025.**

Data was analysed using a framework analysis approach (Ritchie and Lewis, 2003). Framework Analysis involves a systematic process of sifting, charting and sorting the material into key issues and themes allowing the integration of pre-existing themes into the emerging data analysis.

### **Insight: Total 338**

Appreciative inquiry 2021 – 38 responses, 8 Community Explorers.  
Appreciative inquiry 2022 – 42 responses, 4 Community Explorers.  
Appreciative inquiry 2023 – 168 responses, 11 Community Explorer.  
Appreciative inquiry 2024 – 90 responses, 15 Community Explorer

These figures include 47 children and young people. This engagement has taken place in schools and also at local events.



Theme	Sub theme	Quotes	Commentary
Amenities	<p>Accessible services</p> <p>Community spaces and buildings.</p> <p>Community Library</p> <p>Community Leadership</p> <p>Identity and Belonging</p>	<p>Variety of shops, although they have been declining for some years. <b>Ref:</b> MEX-21-12</p> <p>I moved here 4 months ago as I was pregnant and needed somewhere to live. I don't know much about it. It's alright. There is everything I need and I attend the Family Hub when I can. <b>Ref:</b> MEX-21-13</p> <p>We have a good library – they run craft groups and events. The staff are brilliant and so friendly. I am a chef at a community centre and I see all the hard work the staff do and the impact the centre has on people's lives. They do Macmillan coffee mornings, meals, keep people warm (warm space). Opportunities to keep fit – Derwent Road. Opportunities for the community to come together through PAG meetings. <b>Ref:</b> MEX-24-5429</p> <p>I find out about the events that run and that we can attend. <b>Ref:</b> MEX-24-5512</p> <p>There are a few nicer places to go out and spend evenings. People are coming into the village for shows. Pastures estate has a great community feel, has a community team, and organises events such as at Halloween and Christmas. <b>Ref:</b> MEX-24-5574</p> <p>High street is nice, looking forward to it being improved in time. <b>Ref:</b> MEX-24-5437</p> <p>We've got a shop on the corner of the street. There is still a market. I use the pet shop often –</p>	<p>Community spaces and local events are essential to everyday life in Mexborough. Residents value the support available and feel confident about accessing services, while expressing a growing desire for greater involvement in shaping activities. This participation strengthens identity and belonging. Insight shows optimism about planned improvements, which residents believe will enhance the town's appearance, boost local shopping, and create a more vibrant marketplace. Smaller estate communities are also seen as vital for fostering secure connections and inclusion. The library is frequently highlighted as a key asset, offering accessible sessions that support learning and wellbeing.</p> <p>Residents consistently express that Mexborough has a lot to offer. However, comments about empty shops and the shrinking marketplace have become more frequent over the years. This decline is seen as making the town look run down and less inviting, which impacts how people feel about their local area. Many are hopeful that the upcoming investment will improve the town's appearance and restore pride in the high street. Residents appreciate the convenience of the high street and nearby healthcare facilities, including the hospital and GP surgeries—practical benefits that make essential services easy to reach and support overall wellbeing.</p>

		they used to have a stall in the market. The doctor's is close and there is the hospital. <b>Ref:</b> MEX-24-5729	
Safety	Physically safety Perception of safety/crime Service Visibility Inclusion and Belonging Supporting Future Generations	<p>If you're asking about officials, then a local parish council is loads better than Doncaster who never bother about us and, if they do spend money, they do what they want regardless of the wishes and needs of the people of Mexborough. We had more police too, in the station, keeping order. MEX-21-28</p> <p>The massive improvements which have occurred here over the years and its proud community "be pleasant" MEX-23-232</p> <p>'To feel support and for others to feel that support too.' Mex -24-5430</p> <p>Sometimes I do not feel safe, even though the gangs have reduced and been separated often still it is not a safe neighbourhood to be in. I also think there is lots for little ones but nothing for older kids and adults which could be another area of improvement. MEX -24-551</p> <p>- 'Its quieter round here, we've no real issues,' Mex 24- 5436</p>	<p>Residents across Mexborough speak positively about feeling safe in their local area. Many comments highlight that people feel supported when out and about and this included when within the wider community. This sense of belonging reinforces the perception of safety and shows how strong community connections can make a difference to everyday life. Feedback reflects that safety has improved significantly since work was done to disperse local gangs. Residents have linked this action to a noticeable reduction in crime, and many describe feeling more confident and secure as a result. These comments show that targeted interventions can have a lasting impact on how people experience their neighbourhood.</p> <p>While most feedback is positive, some residents still express concerns about crime and antisocial behaviour. A recurring theme is the reduced visibility of the local police force, which some feel could undermine progress. These mixed views may relate to new residents who haven't experienced the improvements long-term residents have seen, and whose perception of safety is shaped by more recent experiences.</p> <p>Despite improvements, safety remains a priority for Mexborough. Residents want reassurance that progress will continue, and many have raised concerns about the future – particularly for younger generations. Suggestions include creating more activities and opportunities for work and play, to help young people feel integrated and recognise the strengths of their community. Overall, the feedback paints a picture of a community that feels safer and more connected than before but still sees room for improvement. Continued engagement, visible policing, and investment in youth opportunities will be key to maintaining and building on the progress already made.</p>
Services and Support	Social Events Opportunities VCSE Groups	<p>Mexborough is a large town with plenty of people with good ideas and some talent – just needs to be harnessed and directed. <b>Ref:</b> MEX-21-01</p>	<p>Residents describe Mexborough as a large town with plenty to offer. Insight shows real appreciation for community spaces, local groups, and events that bring people together. These opportunities are seen as more than just activities – they help strengthen connections and create a sense of belonging across the community. Comments highlight the value of having</p>

	<p>Community Connections</p> <p>Social Isolation</p> <p>Community Leadership</p>	<p>Family orientated and community linking up, after-school clubs, Family Hub. <b>Ref:</b> MEX-21-05</p> <p>We used to have cinemas, a good market and shops, better public transport, and a sixth form attached to Mexborough School (public services). Now good things are more voluntary, e.g., the community group I attend at Dog Daisy. <b>Ref:</b> MEX-23-442</p> <p>Everything on your doorstep – shops etc. Community centre we use every day and support older people. <b>Ref:</b> MEX-23-146</p> <p>They do Macmillan coffee mornings, meals, keep them warm (warm space). Opportunities to keep fit – Derwent Road. Opportunities for the community to come together through PAG meetings. <b>Ref:</b> MEX-24-5249</p> <p>I find out about the events that run and that we can attend. <b>Ref:</b> MEX-24-5512</p>	<p>essential services close by, such as shops and GP facilities. Residents say this makes life easier and encourages them to get out and engage, rather than staying at home alone. Accessibility is clearly linked to wellbeing and social interaction.</p> <p>Since 2024, the Mexborough PAG group has been mentioned as a positive addition. Residents see the meeting as an opportunity to stay informed and be involved in local decisions. This may reflect recent work to increase footfall at community meetings and spark conversations about what matters most to people. Local groups are recognised for playing a key role in building support networks and improving the area. They offer services and activities that people enjoy, and their efforts appear to make a real difference in creating a stronger, more connected community. Overall, residents value the range of services and opportunities available in Mexborough. Continued investment in community spaces, events, and accessible services will help maintain these benefits and ensure everyone feels included and supported.</p>
Relational Connections	<p>Family</p> <p>Friends</p> <p>Trusted relationships</p> <p>Community Inclusivity</p> <p>Local Convenience</p> <p>Belonging</p>	<p>There is a good community spirit. I have lived there all my life and would never leave. MEX-21-02</p> <p>My street is quiet. The nicest house I found when I was moving. Know my neighbours. Helpful &amp; kind. Have friends &amp; family around. MEX-23-5593</p> <p>'We've got some family close by. We got settled in quite quickly, once you get to know people its nice.' Mex-24- 5436</p> <p>'We've got a better home, better for us to spend time as a family.' Mex-24-5483</p>	<p>Residents describe Mexborough as a place where strong personal connections thrive. Many residents say they enjoy living there because friends and family are close by, creating a sense of inclusion and companionship that also strengthens their community. This closeness fosters trust and respect, which residents see as key to Mexborough's identity. Insight reflects a settled sense of belonging. People appreciate having local connections that allow them to socialise without travelling far. Convenience is a recurring theme, with residents noting that Mexborough feels self-sufficient thanks to its accessible services and community assets. This ease of access adds to the appeal of staying local and connected. These strong ties go beyond socialising and create a network of support that makes life easier and more enjoyable. Residents link these connections to feeling safe, respected, and being part of something bigger, reinforcing the idea that community bonds are important to their wellbeing.</p>

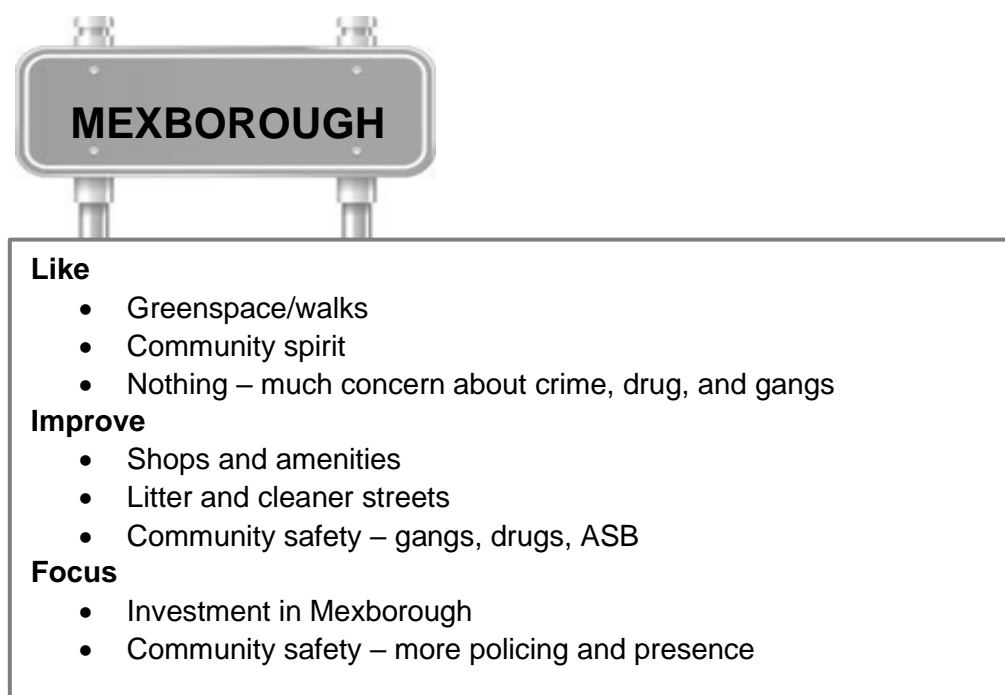


			Maintaining these connections is vital for Mexborough's future. Continued investment in local spaces, events, and communication channels will help preserve the sense of trust and belonging that residents value.
Accessibility	Transport Links Mobility Local Opportunities Community Location	<p>Everything on your doorstep – shops etc. Community centre we use every day and support older people.  <b>Ref:</b> MEX-23-146</p> <p>Everything is close. Shops nearby. Hospital and doctors. Police and fire station.  <b>Ref:</b> MEX-23-716</p> <p>The local resources such as shops and transport mean we don't have to leave the town.  <b>Ref:</b> MEX-23-356</p> <p>There's a new bus on the estate – it means older or isolated people have the opportunity to get out of the house.  <b>Ref:</b> MEX-24-5429</p> <p>Nice to have things close for when I no longer have my own transport.  <b>Ref:</b> MEX-24-5460</p>	<p>Residents describe Mexborough as well placed between Doncaster and Rotherham, with strong transport links to both towns. This connectivity is seen as a major benefit, offering easy access to shopping, leisure, and cultural experiences. People feel they are not restricted to local options, thanks to regular bus and train services that can enable them to travel to further locations.</p> <p>Insight highlights that Mexborough's town centre layout makes it easy to access shops and services in one trip. Many residents appreciate the range of local shops, particularly those living with limited mobility, as it allows them to meet their needs without travelling far. This convenience contributes to Mexborough's reputation as a self-sufficient and practical place to live. While transport links are praised, some concerns were raised about reliability and overcrowding. Residents note that services do not always run on time and can be very busy, which creates challenges for those using mobility aids.</p> <p>Due to limited space for these aids on buses and trains means longer waits and less flexibility compared to services for other passengers. Several comments mention a decline in the number of shops over recent years. Residents feel that investment is needed to revitalise the town centre and encourage growth, ensuring Mexborough remains a convenient and attractive place for everyone. Accessibility is a clear strength for Mexborough, both in terms of transport and local services. Continued improvements to transport reliability and investment in retail spaces would help maintain this advantage and support residents' needs, particularly for those with mobility challenges.</p>

Table 9. Mexborough Thematic Framework, CDC, 2021-2025

## Doncaster Talks

In 2019 Doncaster Talks undertook insight across the borough of Doncaster. Responses were separated into wards and thematically analysed. Across Mexborough, a total of 159 responses were received and the main themes on what people liked about the area, what could be improved, and what the borough should focus on are displayed in the image below.



## Ward Members

The Mexborough ward has three ward members who were elected in 2025.



Councillor Antony Dodds

Mexborough  
Reform UK



Councillor Brendan Megaw

Mexborough  
Reform UK



Councillor John Reed

Mexborough  
Reform UK

# Health and Wealth

## Deprivation

Health inequalities are avoidable differences across the population and between different groups within society. Health inequalities arise from the conditions in which we live, work and play. These conditions influence our opportunities for good health, how we think, feel and act, therefore shaping our health and wellbeing.

Evidence shows that people living in our most deprived areas face the worst health inequalities in relation to health access, experiences, and outcomes. Deprivation covers a range of issues and refers to unmet needs caused by a lack of resources, including but not limited to finances, housing, and education. It is measured in different ways, including the Indices of Multiple Deprivation (IMD). Doncaster is one of the 20 most deprived communities in England. IMD data for 2025 shows that Mexborough has an IMD score of 41.57, ranking 13<sup>th</sup> most deprived community in Doncaster (out of 88), falling into decile 3. Mexborough's IMD score has decreased since 2019 from 43.4. The community previously ranked 11<sup>th</sup> in Doncaster.

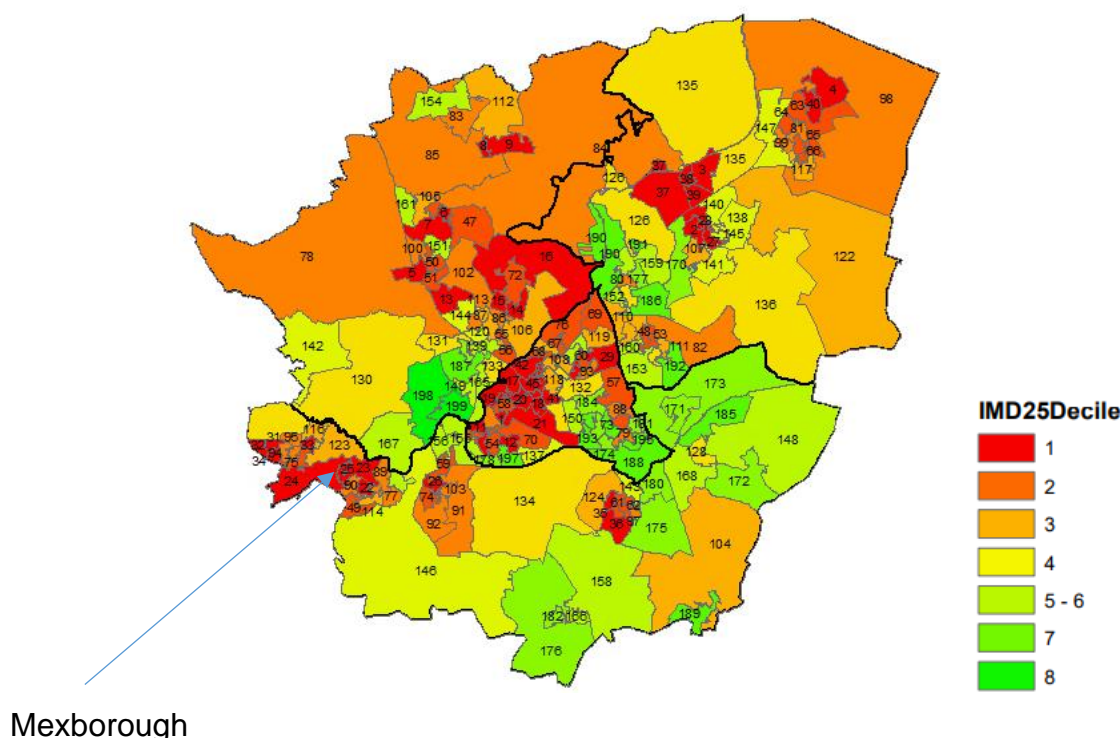
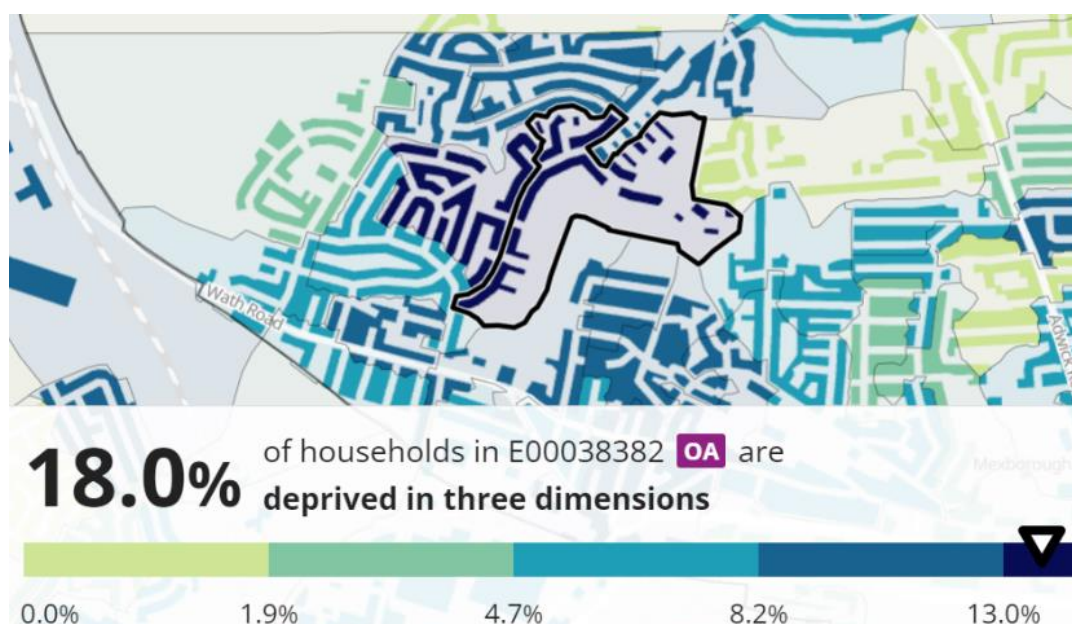


Figure 5. Indices of Multiple Deprivation Deciles, Office for National Statistics, ONS, 2025

The 2021 Census data has produced estimates that classify households in England and Wales by four dimensions of deprivation: employment, education, health and disability and household overcrowding. The 2021 Census breaks down this

information into household deprivation at a community level, and Mexborough is compared to Doncaster and England. 20.1% of households are deprived in two dimensions which is higher than Doncaster (16.7%) and England (14.2%) and households deprived in three dimensions (7%), which is significantly higher than Doncaster (4.6%) and England (3.7%). Furthermore, a high proportion of residents are living in income deprivation (23.2%), which is higher than Doncaster (16.6%) and



England (12.9%). At LSOA level, 18% of households on Maple Road and Willow Drive in the West of the community experience deprivation in 3 dimensions, and can be seen in Figure 6 below.

Figure 6. Household Deprivation in Mexborough, ONS, 2021

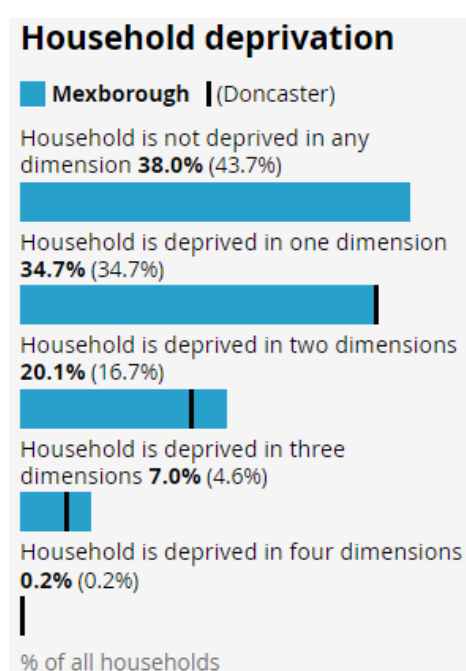




Figure 7. Streets Deprived in 3 Dimensions, ONS, 2021

## Wealth Inequalities

In 2025, 41.7% of Mexborough West Middle-layer Output Area (MSOA) residents and 36% of Mexborough East MSOA residents are experiencing poverty, higher than the Doncaster average of 29.3%. This is a significant increase from 2019, where 23.7% of Mexborough West and 22.5% of Mexborough East residents were living in poverty.

The proportion of older people in poverty in Mexborough West (25.7%) and East (24.5%) is higher than the Doncaster rate (19.4%). Similarly to the population including all age groups, this has increased (from 20.1% and 18.9% respectively) since 2019.

Furthermore, 60.4% of children are living in poverty in Mexborough West MSOA residents and 54% in Mexborough East MSOA, higher than the Doncaster average of 47.1%, an increase from 31.4% and 33.2% in 2019.

When considering the change from 2019 to 2025 data, it is important to note that there have been changes to the calculation of the source data, the income deprivation domain in the Indices of Multiple Deprivation. While it can be inferred that there has been an increase in the proportion of people living in poverty, the changes in this indicator may contribute to the significance of this change.

At community level, the data differs slightly, with 39.2% of Mexborough residents experiencing poverty, 25.2% of older people and 57.4% of children.

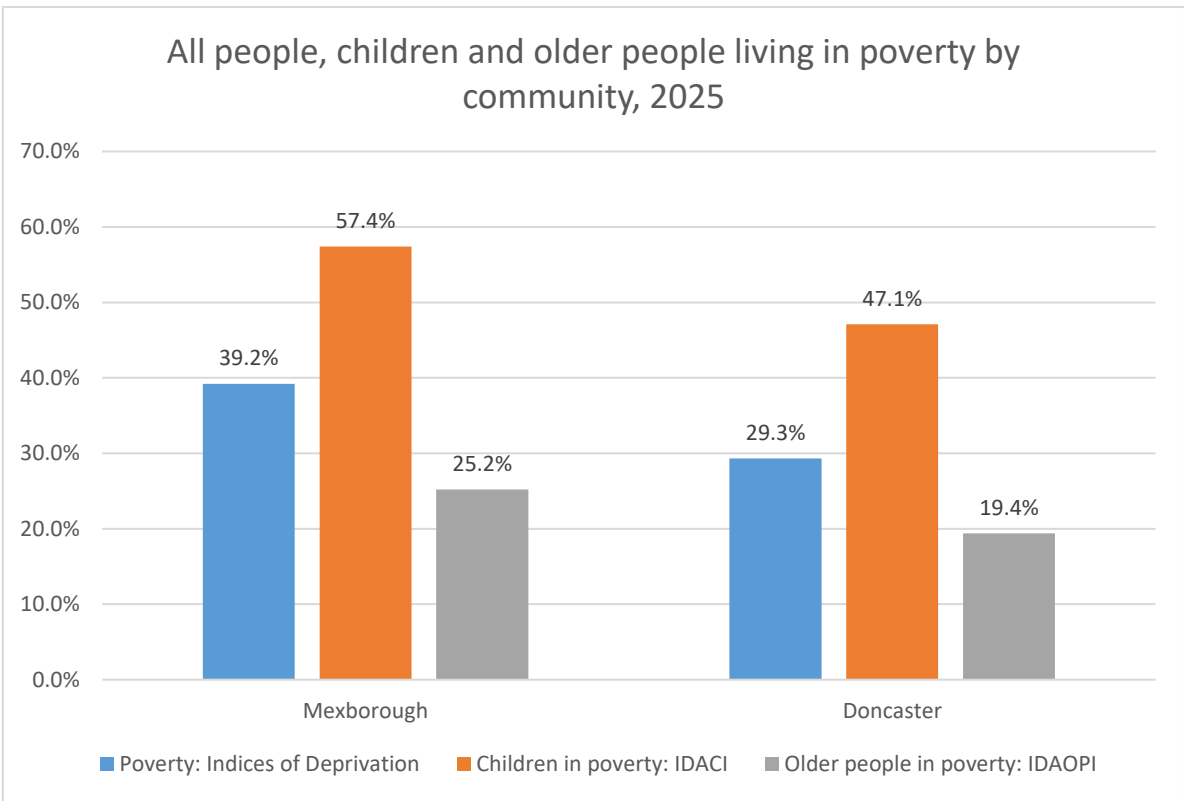


Figure 8. Poverty Prevalence using IMD25, ONS, 2025

## Employment

Mexborough has 8,109 (52.6%) people of working-age. The number of people unemployed in 2019 was 5.5%. In 2021 that had risen to 7.5% which is significantly higher than Doncaster (6.1%) and England (5%) and is 3<sup>rd</sup> highest in the city.

As of the 2021 census, 49.23% of Mexborough residents aged 16 and over are economically inactive. That means nearly half of the adult population is not currently in employment or actively seeking work. This includes people who are retired, long-term sick or disabled, studying, or caring for family.

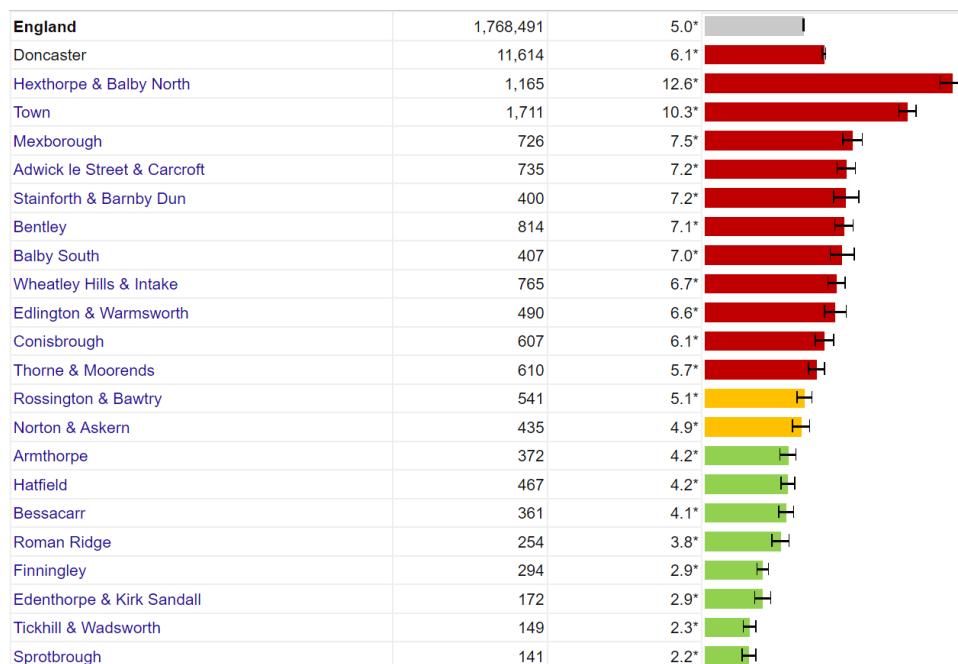


Figure 9. Unemployment in Doncaster Wards, ONS, 2021

In 2021, 8.3% of the working-age population is claiming Employment and Support Allowance (ESA) and 5.97% are claiming universal credit, also the 3<sup>rd</sup> highest in the City.

There are significantly higher proportions of working aged adults who are not in employment and have never worked (29.5%), compared to Doncaster (27.2%) and England (25.6%). This is particularly high in the Addison Road and Morton Road area where 49.2% of residents who aren't in employment have never worked, the highest Mexborough Ward.



Figure 10. Percentage of Not in Employment / Never Worked, ONS, 2021

The majority of residents that do work are employed full-time (62.2%), which is slightly higher than Doncaster (60.7%) and England (59.1%). 28.6% of residents are employed part-time, which is in line with Doncaster (28.9%) and England (29.8%). Figure 11 shows that most people are employed in Elementary Occupations (16.6%), closely followed by Sales and customer service occupations (12.2%). Traditionally these roles are low skill and low pay roles. Furthermore, 10.1% are employed in Professional Occupations, which is lower than Doncaster (12.8%) and England (20.3%). Such jobs usually require higher skill levels, education and receive higher pay.

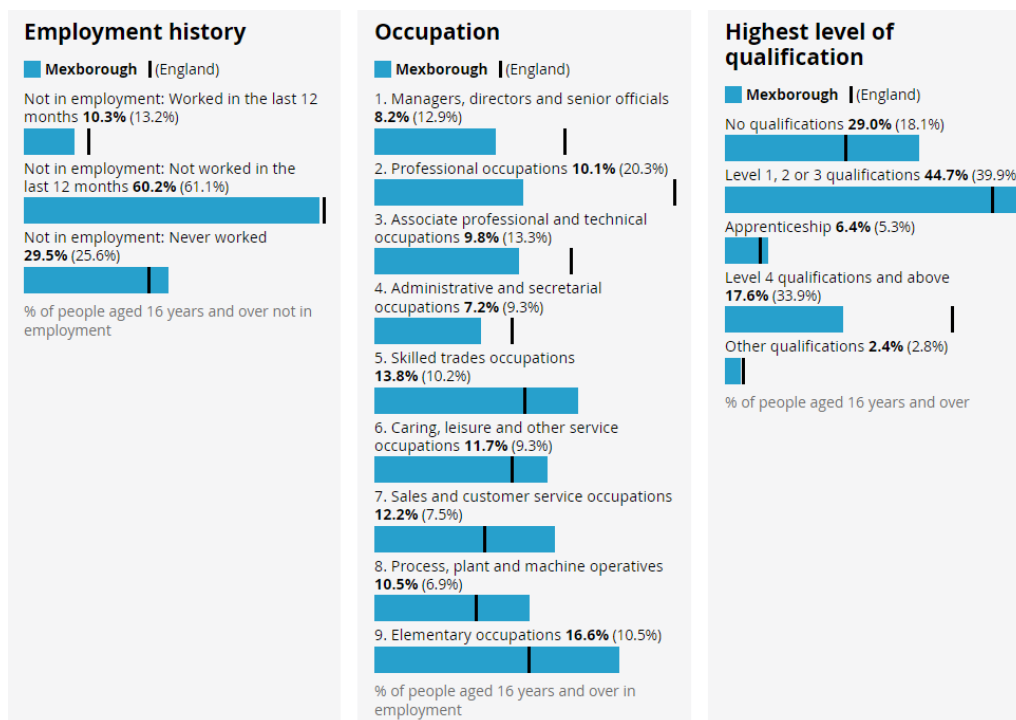


Figure 11. Employment History, Occupation and Highest Level of Qualification in Mexborough, ONS, 2021

A large percentage of people aged 16 years and older have no qualifications (29%) compared to Doncaster (24.6%) and England (18.1%). Streets such as West Road, Lower Dolcliffe Road and Flowitt Street (49%) have particularly high levels of residents with no qualifications. Furthermore, residents who are qualified to Level 4 and above are significantly lower in Mexborough (17.6%) than Doncaster (22.7%) and England (33.9%).

## Fuel Poverty

Fuel poverty is defined as a household living on a lower income which is not deemed reasonable enough to warm a home sufficiently. In 2023, 22.5% of households in Mexborough West and 22.1% of households in Mexborough East were unable to warm their homes to a reasonable standard which is higher than Doncaster (18.8%) and significantly higher than England (13.2%). The recent cost of living crisis including rising fuel costs and inflation may be a contributing factor.

## Food Poverty

The South locality ranks as 2<sup>nd</sup> in accessing relative level of support from foodbanks compared to the rest of the city, highlighting the need to address poverty, food poverty and low income. There are 6 foodbanks located in the South Locality, with Mexborough Food Bank Stronger Together (Food Aware) being located in Mexborough. In 2025, the most common household types needing support are families, followed by individuals then single parents.

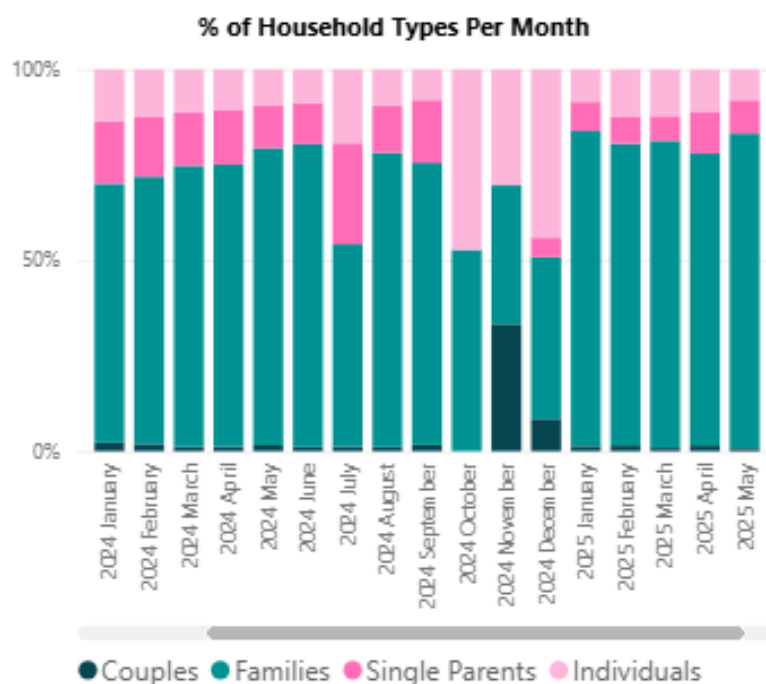


Figure 12. Household Types Accessing Foodbank support in Mexborough, City of Doncaster Council, 2025.



Top reasons for accessing support in 2025 include the Cost-of-Living Crisis, debt, and low income which is consistent with Mexborough experiencing income deprivation and high levels of universal credit claimants.

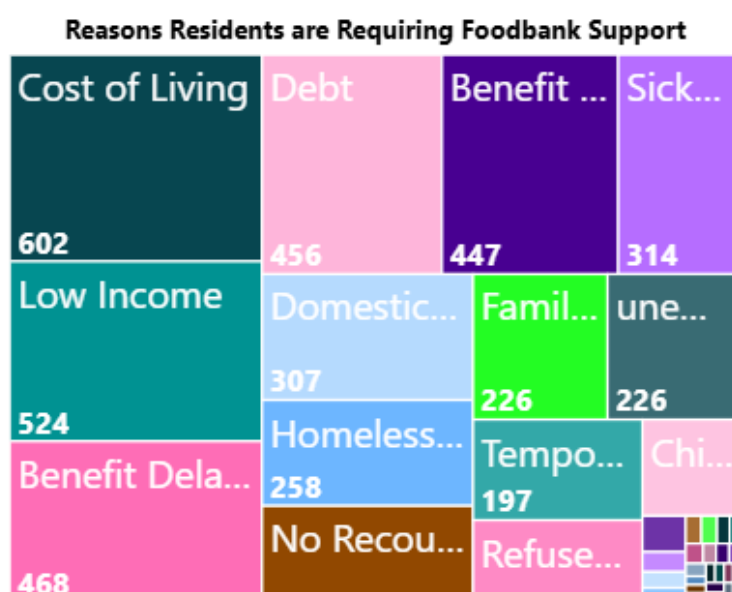


Figure 13. The Top Reasons Mexborough Residents Have Accessed Foodbank Support, City of Doncaster Council, 2025

## The Bread-and-Butter Thing

The purpose of The Bread-and-Butter Thing (TBBT) addresses moderate food insecurity helping minimise demand on crisis support i.e. Foodbanks. They also reduce poverty premiums that families in low-income areas can face, reduce waste by identifying edible surplus food in the UK food sector and redistributing it, to build resilience within the communities. TBBT establish a mobile food club which gives access to nutritious and affordable food taken into the heart of communities starved of money, food, and resources. There is no eligibility, and parcels are based on a weekly shop and provides essential produce for family eating – fresh fruit and veg, chilled goods and cupboard staples, deeply discounting a family's shopping and stretching their budget. A members average weekly saving is £26.50

Throughout the City there are five Hubs based in the following communities: Mexborough, Rossington, Carcroft, Thorne and Hexthorpe. Each site offers 80 residents the opportunity to access affordable food, ensuring 400 residents per week get the help they need. In 2024 across the five sites 1596 volunteering opportunities were accessed with 3241 residents accessing the support. There are more Mexborough residents accessing TBBT than in other areas across South, which could be caused by there being a hub in the Mexborough area.

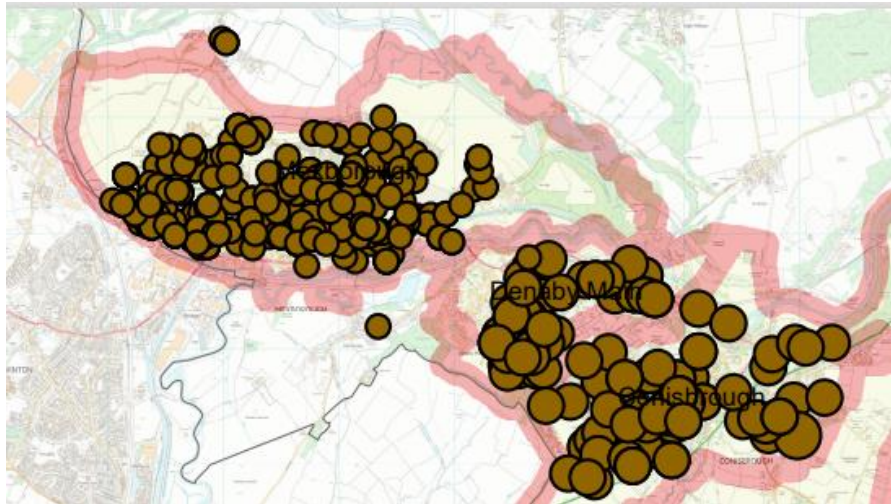


Figure 14. Interactions with *The Bread-and-Butter Thing*, CDC, 2024-25

## Citizens Advice Doncaster Borough

Citizens Advice Doncaster Borough (CADB) are an independent charity and part of the Citizens Advice Network across England and Wales. They provide free, confidential, and impartial advice and campaign on money, benefit, housing, or employment issues affecting people's lives. There is currently a CADB outreach site at Rossington family hub, the Rossington Practice, Edlington Helping Hands, Stone Castle Centre Conisbrough, The Old Library Denaby and a main office in Mexborough. The data provided by CADB for fiscal year 2024/25 shows that Mexborough ward has the second highest number of residents accessing support in the South Locality, after Rossington and Bawtry. The figures of interactions, clients, postcodes covered, and total income gain can be seen from 2021/22 to 2024/25 in table 1. These figures have remained relatively consistent, other than a large increase in 23/24.

Data collation information	Fiscal year 2021/22	Fiscal year 2022/23	Fiscal year 2023/24	Fiscal year 2024/25
Clients	276	343	301	210
New Interactions	1308	1654	3529	815
Postcodes covered	245	166	162	127
Repeat Interactions	136	142	491	163
Total Income gain	£209,280	£275,185	£596,926	£275,944

Table 1. Mexborough CADB figures, CADB, fiscal years 2021/22 to 2024/25, Citizens Advice Doncaster Borough, 2025

During the 2024/25 fiscal year, benefits & tax credits, debt, utilities and communications, benefits and universal credits and housing issues are the top 5 issues when seeking support from CADB in Mexborough, as seen in figure 16. Figure 15 is a map of interactions with CADB in Mexborough.

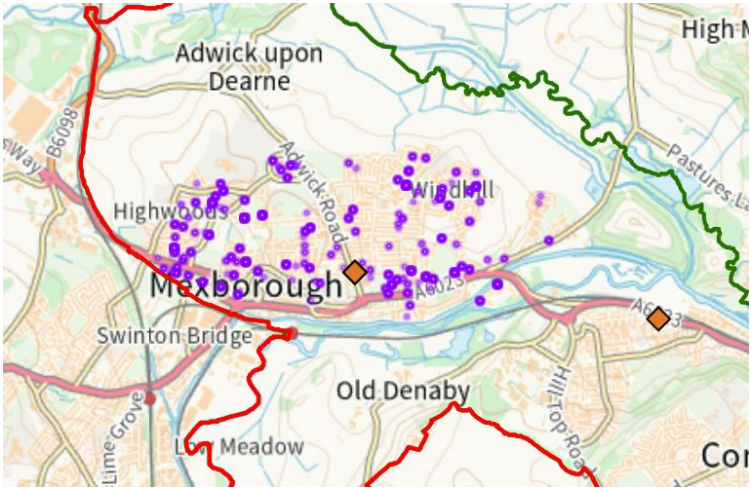


Figure 15. Interactions with CADB in Mexborough fiscal year 2024/25, *Citizens Advice Doncaster Borough, 2025*

Issue 1 - Top 5

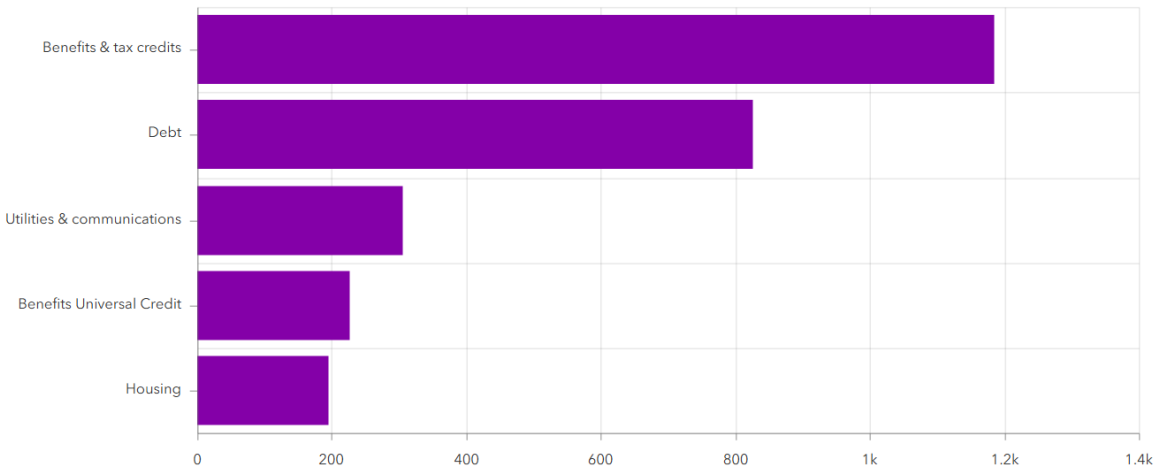


Figure 16. Top 5 Reasons Residents in Mexborough Access CABD Support 2024-2025, *Citizens Advice Doncaster Borough, 2025*

# Health Inequalities

## Life Expectancy

In 2024 people living in Mexborough have a lower life expectancy and live more years in poor health in comparison to Doncaster and England. Life expectancies for men (73.45 years) and women (79.2 years) living in Mexborough are significantly lower than Doncaster (*m*: 77.8, *f*: 81) and England (*m*: 79, *f*: 83). Healthy life expectancy is also lower with men expected to develop a life limiting health condition at aged 54.6 and women aged 55.9, which is significantly earlier than Doncaster, (*m*: 57, *f*: 57), and England (*m*: 61.5, *f*: 61.9). This could be impacting the employment rates for the area as the working age population are developing health conditions which may be affected their ability to work and the types of employment they can do.

## Long Term Health Conditions

The proportion of residents self-reporting poorer health in Mexborough is considerably higher than the borough and national rates. Approximately 25% of the population reported living with a limiting illness or a long-term health condition. Emergency hospital admissions for COPD are two times the figures for the rest of England; lung cancer is the most prevalent cancer, and COPD is the leading cause of mortality in the area. A leading cause of respiratory conditions is smoking, and Mexborough has a smoking prevalence of 20.9%, much higher than Doncaster's 12.4% and England's 11.9%. Other respiratory conditions are also prevalent in Mexborough including Asthma (12.3%), Chronic Bronchitis (2.5%) and Emphysema (1.1%).

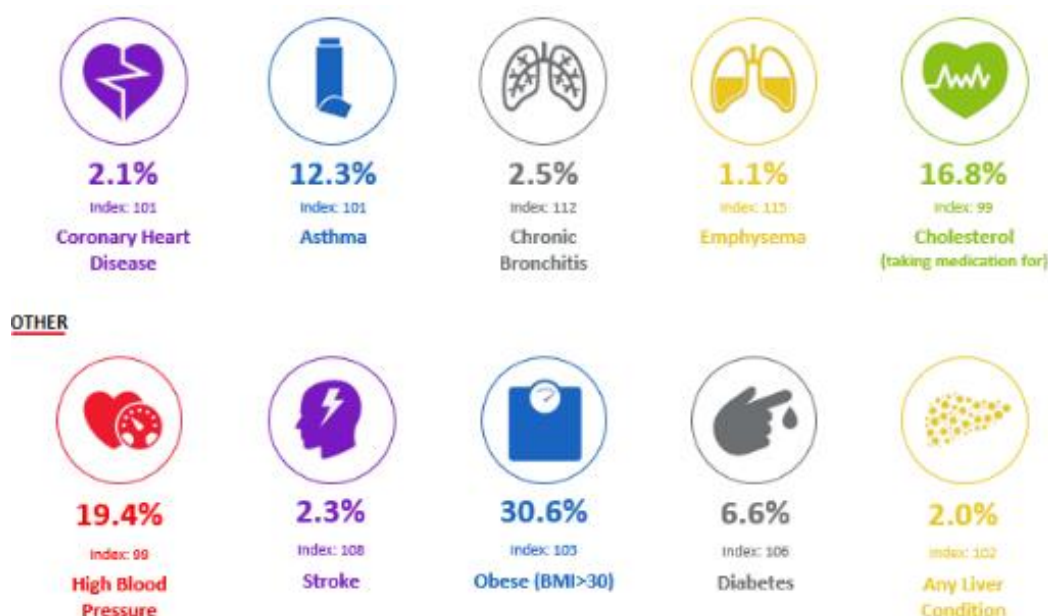


Figure 17. Acorn Data for Persons Diagnosed with Disease, Acorn, 2024

## Incidence of Death

Mexborough exhibits high levels of mortality compared to Doncaster and England. The leading causes of death are those considered preventable. The basic concept of

preventable mortality is that deaths are considered preventable if, in the light of the understanding of the determinants of health at the time of death, all or most deaths from the underlying cause could potentially be avoided by public health and primary prevention interventions (that is, before the onset of diseases or injuries, to reduce incidence).

Preventable mortality overlaps with, but is not the same as treatable mortality, which includes causes of deaths that can be mainly avoided through timely and effective healthcare interventions, including secondary prevention and treatment. Preventable mortality and treatable mortality are the two components of avoidable mortality, as defined by the Office for National Statistics.

Circulatory conditions, including coronary heart disease, are the leading cause of premature death in Mexborough and the second main cause of death. When looking at the risk factors associated with heart conditions, 13.7% of adults drink five alcoholic beverages a day and there are significantly higher hospital admissions for alcohol-related harm. Further, 30.6% of adults are obese and only 61.4% eat fruit on 3 or fewer days a week.

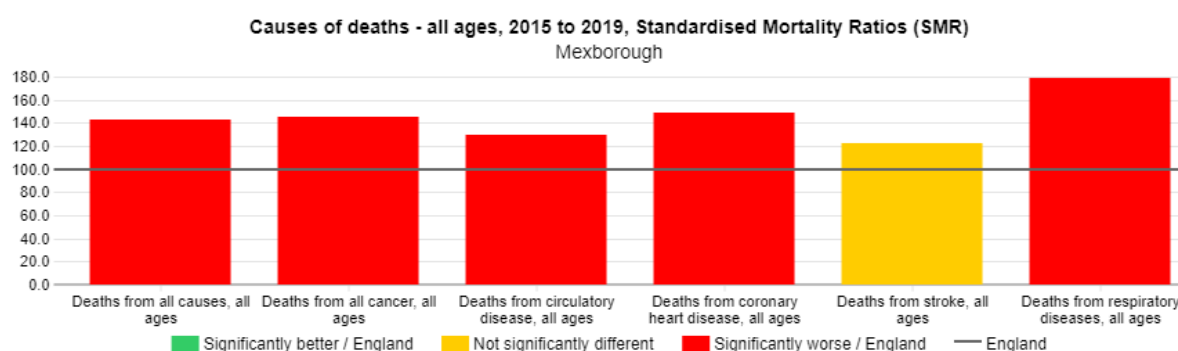


Figure 18. Causes of Death for all Ages in Mexborough, ONS, 2019

## Alcohol

Figure 18 shows alcohol related admissions at Lower Super Output Area (LSOA) level, showing differences amongst areas within a ward. Notably, six out of Mexborough's ten LSOAs surpass Doncaster rates for such admissions. Of particular significance is Mexborough Windhill, which ranks as the third highest among all LSOAs in the South Locality.



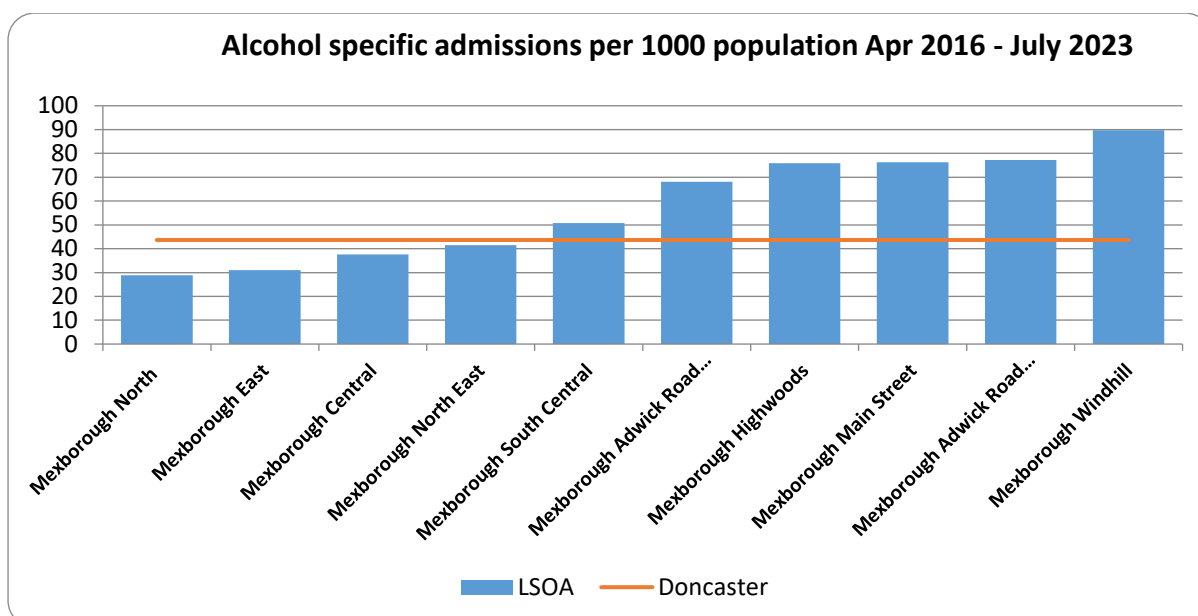


Figure 19. Alcohol Specific Admissions per 1000 population, ONS, Apr 2016 - July 2023

## Smoking

Mexborough has a smoking prevalence of 20.9%, significantly higher than Doncaster's 12.4% and England's 11.9%.

According to NHS England in 2023 (NHS England Quality and Outcomes Framework 2022-2023), there are 54584 patients aged 15 years or over who are registered patients with Doncaster South Primary Network (PCN) in of Doncaster. 9298 of those identified as a smoker when they registered at the GP, equating to 17.03% of registered smokers across Doncaster.

In the New Surgery, 23.56% of patients (1447 out of total registered patients of 6143) are registered as smokers. 19.88% of patients are registered smokers from Mexborough Health Centre.

It must be noted that data is taken from self-reported measures when signing up to a GP. Residents registered at GP do not necessarily reside in Mexborough. This may not truly reflect the prevalence of smoking in specific communities. Also, this data relies on individuals self-reporting their behaviours. It must be noted that patients registered with Mexborough Integrated Health Care, and Askern Medical Practice who might reside in Mexborough are not included; they are instead included in the report of PCN North.

Action on Smoking and Health (ASH) estimates smoking costs Doncaster £335 million per year, the combined cost of smoking-related medical treatment via hospital admission and primary care services is £16.5 million. Social care costs due to smoking amounts to an estimated £115 million annually in Doncaster with the majority being lost to informal care costs from friends and family (£64.3 million).

In the Mexborough Ward, the gross annual cost of smoking as of Spring 2024 was £12.7 million. An estimated £4.05 million is spent annually on tobacco products in

Mexborough and the national average spend on tobacco per smoker now stands at £2486. Smoking has a significant impact on employment and productivity, in Mexborough the total cost due to lost productivity from smoking was estimated at £7.54 million which is higher than the borough average (£6.5M).

## Childhood Development

A child's early experiences are vital in providing the foundations for children to develop healthily and happily. Children being born into deprivation and living amongst deprivation in their early years are more likely to experience a wide range of health problems, fall behind their peers and face employment problems in adult life. The quality of early experiences is important as children develop, providing opportunity for motor (physical), intellectual (language and communication), cognitive and socio-emotional development.

The Income Deprivation Affecting Children Index (IDACI) measures the proportion of all children aged 0 to 15 living in income deprived families. In Mexborough, 57.4% of children are classed as living in poverty, this is higher than the Doncaster average (47.1%).

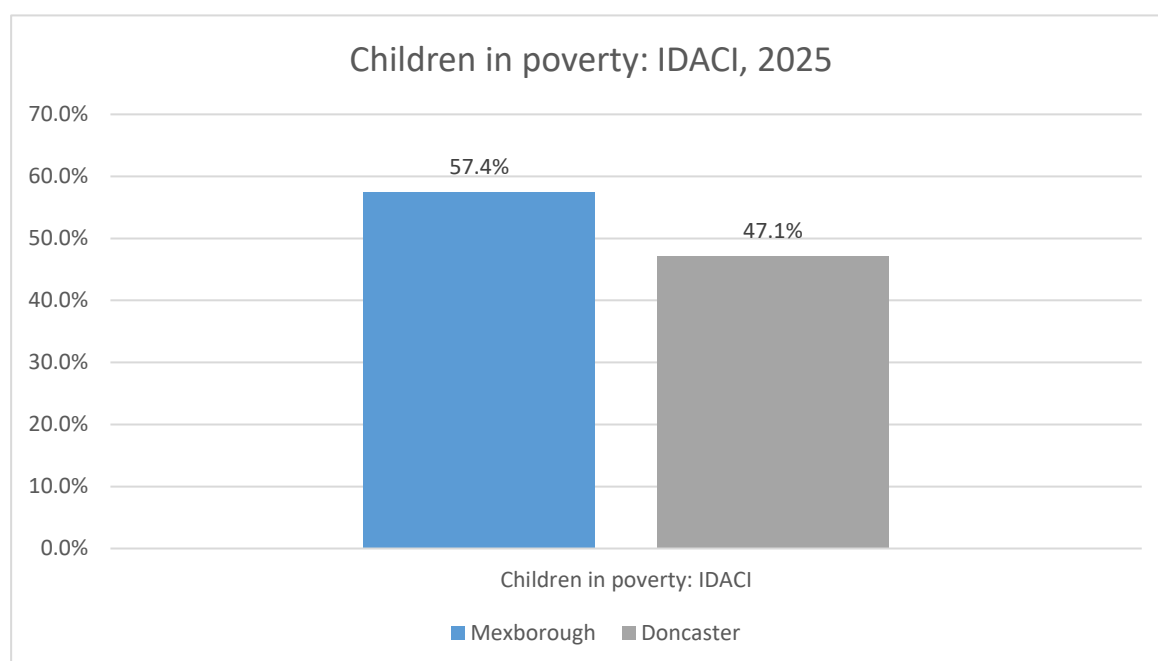


Figure 20. Children in Poverty: Income Deprivation Affecting Children Index (aged 0 to 15), ONS, 2025

## Childhood Obesity

Childhood obesity and inequality are closely connected. Children from families with less money often have fewer chances to eat healthy food or play outside safely. They might live in areas without parks or easy access to affordable fresh fruits and vegetables. These challenges make it harder for them to stay at a healthy weight.

Because of this, childhood obesity is more common in deprived communities. Helping all children grow up healthy means making sure every family has access to good food, safe places to play, and support for healthy living.

In 2024 in Mexborough 25.9% of children are overweight or obese at reception age compared to Doncaster (25.8%). This figure increases to 42% at year 6 compared, which is slightly higher than the rate reported for Doncaster (40.3%) and higher further than England at 36.7%.

Indicator	Period	Mexborough			DoncasterEngland		
		Recent Trend	Count	Value	Value	Value	Worst
Reception prevalence of obesity (including severe obesity), 3 years data combined	2021/22 - 23/24	–	-	12.5%	12.1%	9.6%	-
Reception prevalence of overweight (including obesity), 3 years data combined	2021/22 - 23/24	–	-	25.9%	25.8%	21.9%	-
Year 6 prevalence of obesity (including severe obesity), 3 years data combined	2021/22 - 23/24	–	-	25.9%	26.6%	22.7%	-
Year 6 prevalence of overweight (including obesity), 3 years data combined	2021/22 - 23/24	–	-	42.0%	40.3%	36.7%	-

Figure 21. Prevalence of Obesity in Reception & Year 6 Children in Mexborough, Doncaster and England, Office for Health Improvement and Disparities, 2025

## Learner Outcomes

At Key Stage 2 (KS2), each pupil is assessed in reading, writing and maths. This shows the percentage of pupils who have reached the expected standard in all three subjects. In 2024, 64 % of pupils from Mexborough achieved the expected standard in reading, writing, and mathematics at key stage 2. It was higher than across Doncaster as a whole (59%). 1% increase compared to 2023.

At Key Stage (KS4), each pupil is given an Attainment 8 score (a score out of 90) based on their 8 best GCSE grades including English, Maths and at least 3 other traditional academic GCSEs (sciences, languages, and humanities). Other qualifications at an equivalent level (e.g., BTECs) can also count towards the score. In 2024, GCSE attainment 8 score per pupil (out of 90) was 42.9 in Mexborough (119 pupils) which is slightly lower to Doncaster at 44. This is higher in comparison to 2023 (41.4). In Mexborough in 2024, 10 children were missing from school, and 51 home educated.

## Pupil Lifestyle Survey

The Pupil Lifestyle Survey is conducted by City of Doncaster Council to provide valuable data on children and young people's health-related behaviour, through an anonymous school-based questionnaire. Data from the survey has provided a set of Doncaster-wide figures at key points in children and young people's development; KS2, 3 and 4.

The Doncaster Pupils Lifestyle Survey conducted for the academic year 2023/2024 was completed by 3810 pupils in Doncaster overall and 73 students from the Mexborough ward. Of these, 47% identified as male and 48% as female. 4% preferred not to say or identified differently. Of these pupils, 74% had a white ethnicity and 10% were from an ethnic minority. English was a second language for 29% of students. This was a higher percent as reported across Doncaster (23%) as a whole. Prevalence of disability was 16%, compared to Doncaster at 9%.

In Mexborough in 2023/24, 95% of participants have breakfast, this is higher than Doncaster (86%). The survey also indicated that 29% of school-aged children in Mexborough have free school meals, which is higher than Doncaster (19%). 44% of Mexborough students walk to school, compared to 39% Doncaster wide. 75% of students in Mexborough enjoy physical activity, slightly lower than Doncaster wide at 80%.

## Family Hubs

Family Hubs are local, community-based centres that offer integrated services for families from the early stages of life covering conception and early childhood up to adolescence, and up to age 25 for individuals with special educational needs and disabilities (SEND). Family Hubs offer early years and parental support including antenatal and postnatal care, baby and toddler classes, infant feeding, parenting programmes, SEND pathways and specialist support for mental health, domestic abuse, welfare and substance misuse. Family Hubs provide welcoming community spaces for families, bringing together education, health, social care, and wellbeing services in one facility and cater for a broad spectrum of needs. There are twelve Family Hubs across Doncaster, with three located in the South locality including Denaby and Conisbrough, Mexborough, and Rossington.

Membership data shows the percentage of eligible children signed up to Family Hubs. In 2024-2025 Mexborough Family hub membership was 63% for children aged 0-8 weeks, 89% for 0-1 year and 11-month-old children and 100% for children aged between 0-4 years and 11 months. Overall membership for South is 92%.

Access data includes the percentage of children using Family Hubs services once or twice, and engagement figures indicate the number of children seen three or more times. Engagement and access is highest in Mexborough compared to other wards across Doncaster, especially at age 0-1 years and 11 months (53%) and 76% for access. There are several factors that could contribute to membership, access and engagement figures which must be considered when interpreting data. A complex relationship exists between socioeconomic, cultural, education, deprivation and independence as well as other factors and indicators which can influence these rates. Data across all recorded age groups is available in the table below.

	0-8 weeks	0-1 year and 11 months	0-4 years and 11 months
Membership	63%	89%	100%
Access	NA	76%	80%
Engagement	NA	53%	66%

*Table 2. Mexborough Family Hub children's membership, access and engagement figures, fiscal Q4 2024-25, City of Doncaster Council, 2025*

	South Family Hubs
Membership	92%
Access	80%
Engagement	68%

*Table 3. South Locality Family Hub Children's Membership, Access and Engagement Figures Across All Ages, Fiscal Year 2024/25, City of Doncaster Council, 2025*

Family Hubs facilitate 2-Year-Old Funding Entitlement for families, which provides up to 15 hours of free early education or childcare per week for 38 weeks of the year. 64% of eligible children in Doncaster have taken up 2-year-old funding. This figure has dropped each term over the last year in all localities with the biggest decrease in Central and South localities. For summer 2025 late starters, 2-year-old funding uptake is lower in Mexborough (62.4%) when compared with Doncaster (64%).

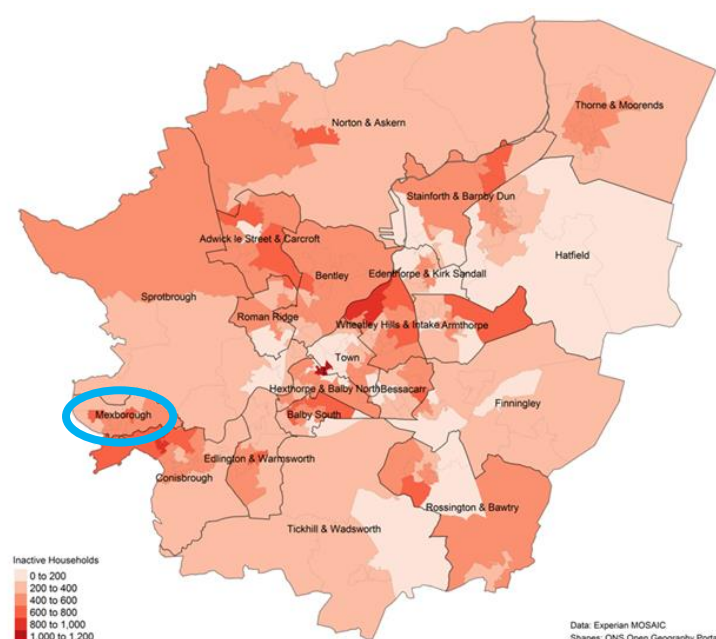




## Physical activity

Most of the information in this section is taken from Mosaic data, and more information about Mosaic data can be found in the [appendix](#).

Levels of physical activity in Mexborough are low compared to the rest of the borough. This can be seen in the map, which identifies the areas with the highest number of inactive households.



*Figure 22. Mosaic Map of Doncaster Physical Activity Levels. Mexborough is Highlighted in the Circle, Get Doncaster Moving, 2023*

Census 2021 indicates that across England and Wales, 45.1% of working residents travel mainly by car or van, 31.2% work from home, and a smaller proportion walk, cycle, or use public transport. Local survey responses from Mexborough reveal that 41.7% of residents never engage in moderate-intensity physical activity—a rate 7% higher than the national average. Combining this with census data showing high reliance on private vehicles suggests limited active travel within the community. This pattern of physical inactivity, travel behaviour, and connections to deprivation underscores Mexborough as a priority for the Get Doncaster Moving Strategy, necessitating targeted measures to promote walking, cycling, and public transport use alongside broader health and wellbeing initiatives.

Responses from 107 residents in Mexborough indicate that 41.7% never engage in moderate intensity physical activity. This figure is 7% higher than the national average. This data has been matched to the number of children and young people living in deprived and inactive households. The former data positions Mexborough as an area of focus and priority for the Get Doncaster Moving Strategy.

## Physical Activity Children and Young People

Data from the 2024 Pupil Lifestyle Survey shows that 44% of participating Mexborough students walk to school, compared to Doncaster at 39%. 95% students in Mexborough have done physical activity in the last 7 days, compared to 97% of students in Doncaster. 16% of students in Mexborough do physical activity via afterschool club, compared to 18% in Doncaster.

## Community Information

### Population

Population Size Mexborough: 15,600

### Age Profile

A total of 52.2% of Mexborough's population are of working-age (25–64 years old). The ward's overall age composition is in line with that of the English population and can be seen in Figure 23.

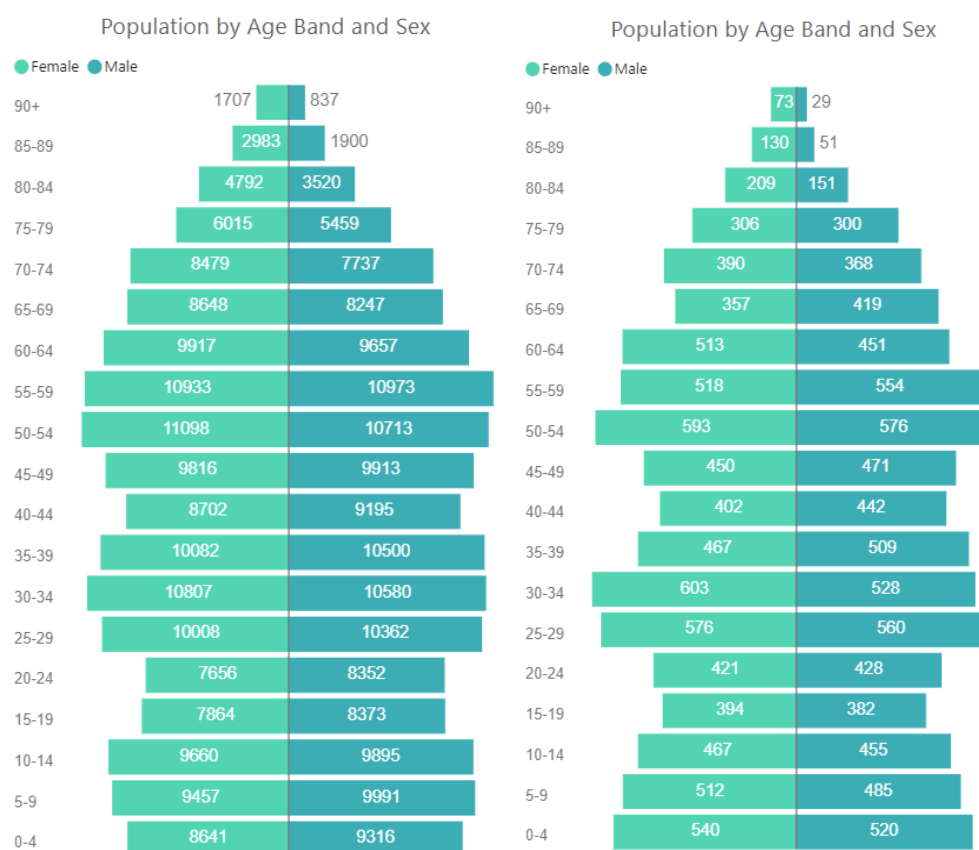


Figure 23. Mexborough and Doncaster Population Distribution, ONS, 2021

### Ethnicity and Language

The community continues to be predominantly White British, with only 2.7% of the population being from other ethnic groups and is illustrated in the table below.

<b>Ethnic Group</b>	<b>Mexborough</b>	<b>Doncaster</b>	<b>England</b>
Asian	0.6%	2.9%	9.6%
Black	0.7%	1.2%	4.2%
Mixed / Multiple	1.0%	1.5%	3.0%
White	97.3%	93.1%	81.0%
Other	0.4%	1.2%	2.2%

*Table 4. Ethnic Groups in Mexborough, ONS, 2021*

## Housing

Housing conditions and the surrounding environment can have profound impacts upon residents' health and exacerbate health inequalities. House types are primarily terraced or semi-detached properties, matching the highly dense profile of Mexborough. The highest concentration of terraced housing is Schofield Street (86%), Victoria Road (91.4%) and Albert Road (90.2%).

St Leger Homes provide social housing services across Doncaster. They manage over 21,000 residences across the city. High levels of social housing, with a large proportion of bungalows and terraced housing are an indicator of deprivation and associated with overcrowding, low income and can consequently affect poor levels of childhood development. The number and types of socially rented houses in Mexborough be seen in the table below. Table 5 shows the rent arrears in Mexborough from 2021/22 to 2024/25. Rent arrears dramatically increased in 2024-25. It is important to note that Mexborough has the highest amount of rent arrears across as all Doncaster communities.

<b>Type of House</b>	<b>Total number</b>
<b>Bungalows</b>	550
<b>Flats</b>	338
<b>Maisonette</b>	0
<b>Houses</b>	736
<b>Total</b>	1626

*Table 5. St Leger Housing in Mexborough, St. Leger Homes, 2025*

<b>Years</b>	<b>Amount of Rent Arrears in £</b>
21/22	£206963
22/23	£206701
23/24	£190610.66
24/25	£250613.69

*Table 6. Rent Arrears in Mexborough, 21/22 to 24/25, , St. Leger Homes, 2025*

## Community Safety

Community safety remains a top priority for residents and stakeholders across Doncaster. Feedback from a range of engagement activities consistently highlights concerns around anti-social behaviour, crime, and perceptions of safety. People want cleaner, more vibrant and welcoming neighbourhoods, supported by effective policing, youth engagement, and thoughtful environmental design.

To help achieve this, we're committed to a city-wide approach that combines proactive and reactive measures through a layered crime prevention strategy—primary, secondary, and tertiary—designed to make every community safer.

If you'd like to stay informed or take action, you can find detailed crime statistics for your neighbourhood at [www.police.uk](http://www.police.uk). To report issues or concerns, visit [www.yourlifedoncaster.co.uk/safer-city-how-to-report-issues](http://www.yourlifedoncaster.co.uk/safer-city-how-to-report-issues).

## The Safer Stronger Doncaster Partnership

We're working together to make Doncaster a safer, stronger place for everyone. The partnership focuses on six key priorities that tackle issues affecting our communities:

- **Reducing anti-social behaviour (ASB)** – making our streets and public spaces welcoming for all.
- **Reducing crime and re-offending** – supporting people to make positive choices and preventing repeat offences.
- **Tackling serious and organised crime** – protecting our communities from organised criminality and criminal networks.
- **Reducing substance and alcohol misuse** – helping people access support and reducing harm.
- **Tackling domestic and sexual abuse** – ensuring victims get the help they need and holding perpetrators to account.
- **Reducing violence and violent crime** – creating safer neighbourhoods for families and young people.

Together, these priorities aim to build a Doncaster where everyone feels safe and supported.

## Community Voice / Key Safety Concerns

Residents in Mexborough told us that while there have been some improvements, concerns about anti-social behaviour and crime remain. People spoke about intimidation, vandalism, and visible drug activity, alongside worries about gangs and repeat offending. Older residents said they often feel unsafe, and some avoid certain

areas because of fear. Environmental issues like fly-tipping and neglected spaces add to these concerns, and many said they want more visible policing and quicker responses to incidents. Fear of reporting crime is also common.

## Anti-Social Behaviour

Anti-social behaviour (ASB) can be defined as when someone acts in a way that causes trouble, fear, or upset to others. This can include things like being noisy late at night, vandalism, or being aggressive in public. Hate crime is when someone is hurt or targeted because of their race, religion, disability, gender identity, or sexuality. It's not just a crime against one person—it can make whole communities feel unsafe.

Mexborough has fewer numbers of incidences reported or ASB compared to Conisbrough and Denaby, Finningley and Rossington and Bawtry ward.

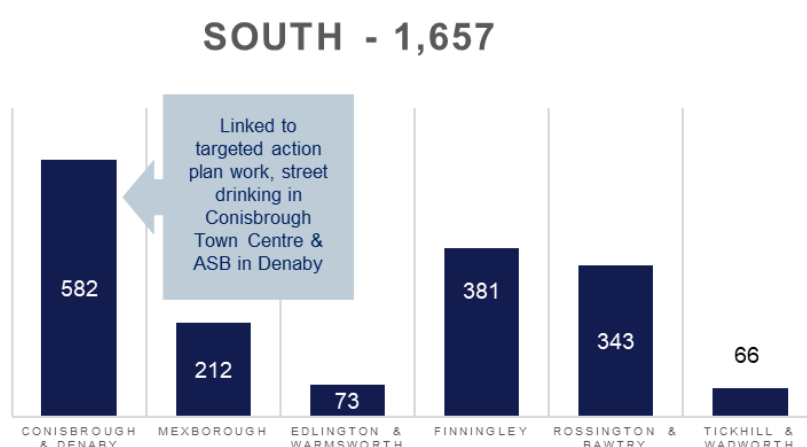


Figure 24. Levels of Anti-Social Behaviour and Incidences by MSOA in South Locality, City of Doncaster Council, 2024

## Vulnerable Victims

The number of vulnerable victims for each Locality is also recorded from the table below you can see that South is the lowest in Doncaster (8), compared to North (22), central (41) and South (8).



Across the South locality there were only 8 cases of vulnerable people being supported in 2023. These numbers are linked to the number of closed cases in hotspot locations across the locality and particularly a reduction in the contact required through dedicated work in Mexborough. This has been done to help address inequalities and vulnerabilities experienced by those in need.

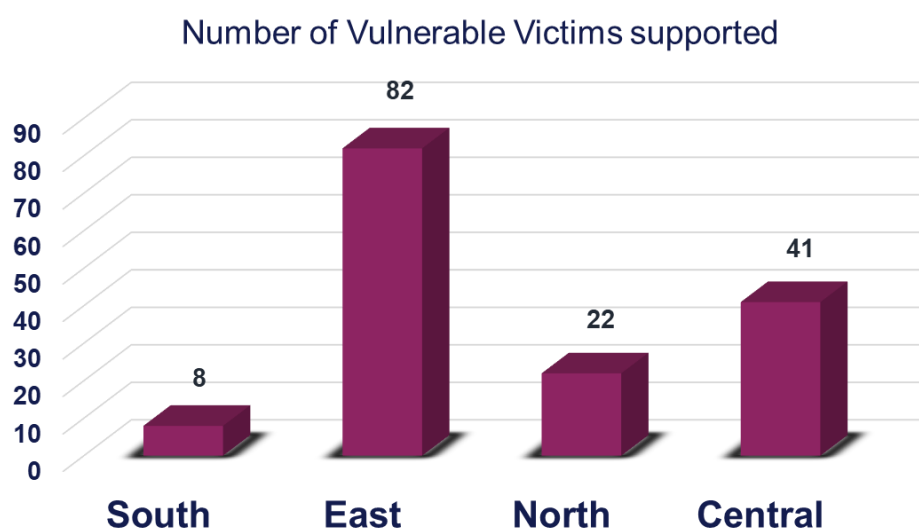


Figure 25. Stronger Communities Vulnerable Victims Locality, , City of Doncaster Council, 2024

## Wellbeing Service

This is one of the services run by City of Doncaster, and it supports residents with financial support, physical health, housing, mental health and social isolation and an early intervention to prevent moving to adult social care services.

Table 8 shows the top 5 communities in Doncaster using the service. Mexborough has moved into the top 5 communities since 2023. Table 9 shows the top 3 themes most prevalent in Mexborough.

Community Ranking for using service	2021-2022	2022-2023	2023-2024	2024-2025 Q4
1	Wheatley & Intake	Wheatley & Intake	Wheatley & Intake	Town
2	Rossington & Bawtry	Rossington & Bawtry	Bessacarr & Cantley	Hexthorpe and Balby North
3	Thorne & Moorends	Mexborough	Mexborough	Rossington
4	Adwick & Carcroft	Adwick & Carcroft	Hexthorpe & Balby North and Bentley	Thorne and Moorends
5	Town/City Ward	Bessacarr & Cantley	Rossington & Bawtry and Town/City Ward	Norton & Askern

Table 7. Top 5 wards Using the Wellbeing Service, , City of Doncaster Council, 20245

Mexborough theme Ranking	Theme Supported
1	Financial
2	Mental, emotional and physical health
3	Housing and living Environment

Table 8. Top 3 Most Common Themes Residents are Accessing the Wellbeing Service for Support, , City of Doncaster Council, 20245.

## Community Investment

Between March 2020 and July 2025 there has been £314,00 invested from Doncaster Delivering Together in Mexborough, across 63 spends. This investment has been successfully applied for by partners and Voluntary Community and Faith Sector (VCFS) groups. The top 3 priorities are increasing community spirit, financial security and mental health support & awareness.

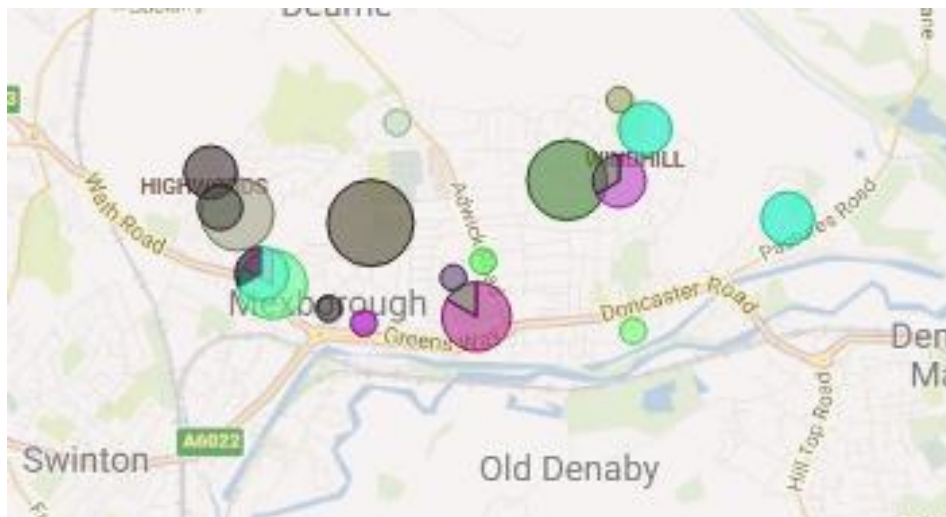


Figure 26. Map of Community Investment in Mexborough, Doncaster Delivering Together, 2025

## References

Armstrong, A.J., Holmes, C.M. and Henning, D., 2020. A changing world, again. How Appreciative Inquiry can guide our growth. *Social Sciences & Humanities Open*, 2(1), p.100038.

Ritchie, J., Spencer, L., O'Connor, W., & Lewis, J. (2003). Carrying out qualitative analysis. *London: Sage*

## Appendix

### Well Doncaster

More information about Well Doncaster can be found on our website:

[Home | Well Doncaster](#)

### Census 2021

The census is undertaken by the Office for National Statistics every 10 years and gives us a picture of all the people and households in England and Wales.

[Build a custom area profile - Census 2021, ONS](#)

[Census Maps - Census 2021 data interactive, ONS](#)

### Public Health Data

#### Fingertips

This is a new fingertips profile that uses data from Local Health an existing PHE data tool. Local Health is a collection of quality assured health information presented for small geographical areas. By presenting data for small areas, Local Health provides evidence of inequalities within local areas. It supports targeted interventions to reduce such inequalities.

Local Health contains indicators related to:

- Population and demographic factors
- Wider determinants of health
- Health outcomes

It presents data for middle super output areas (MSOA), electoral wards, clinical commissioning groups (CCG), local authorities, and England as a whole.

Please note, as the Local Health tool was designed to allow users to map small area data, a mapping option has not been provided in this profile.

<https://fingertips.phe.org.uk/profile/local-health/data#page/0>

[Local Health - Public Health England - Reports: get a dashboard on a custom area](#)

Link to data- [Fingertips | Department of Health and Social Care](#)

Life expectancy and healthy life expectancy by ward: [Life expectancy by census ward](#)

Indices of Multiple Deprivation 2025 – statistical release, data files and reports: [English indices of deprivation 2025 - GOV.UK](#)

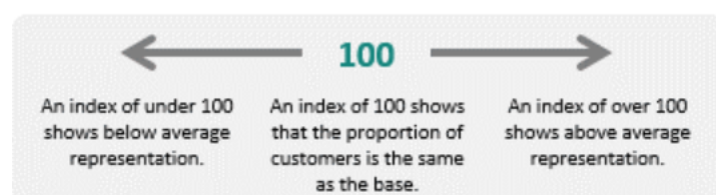
## Acorn profiles

Wellbeing Acorn segments the population into 4 groups (Health Challenges; At Risk; Caution; Healthy) and 25 types describing the health and wellbeing attributes of each postcode across the country. By analysing significant social and health related behaviour, it provides precise information and an in depth understanding of upstream issues affected by current lifestyle traits

## INTERPRETING THE REPORT

The Wellbeing Acorn profile report helps you understand the underlying demographics, lifestyle and health attributes of your customers and service users by comparing their Wellbeing Acorn profile to a base (e.g. UK population, area or other customer groups).

### INDEX



The Wellbeing Acorn Profile contains 12 variables that are indicators of Disability or Infirmary in the population and 9 variables related to unhealthy Behaviours. The average score measured against the base profile of Yorkshire and the Humber is 100. A value above 100 indicates that the area population is overrepresented for this characteristic, below 100 the value is less than the average or underrepresented.

## Physical Activity

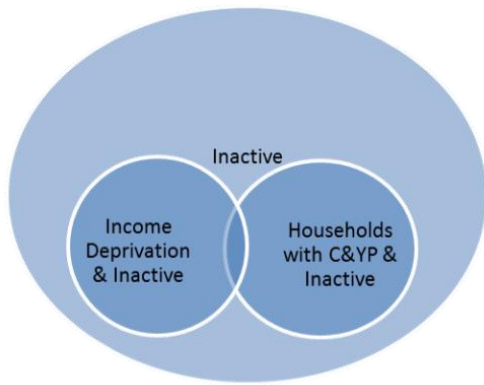
Get Doncaster Moving survey

<https://getdoncastermoving.org/uploads/behavioural-insight-phase-one-summary-report.pdf?v=1644581925>

Mosaic data

Mosaic Public Sector classifies the UK population into one of 66 types and 15 groups through a detailed and accurate understanding of each citizen's demographics, lifestyles, behaviours and location.

The Physically Inactive Population of Doncaster



The MOSAIC types who “Do not exercise” and “Do not take part in Sport” were searched and three priority groups have been identified through work with strategic partners as part of the development of Doncaster’s Physical Activity Strategy. The three priority groups are:

- The Inactive
- Families with children and young people
- People living in income deprivation

These groups are cross-referenced against the inactivity list allowing for the identification of MOSAIC types which are both likely to be inactive and living in deprivation as well as inactive and from households with children and young people.

Link to the Get Doncaster Moving strategy; [Let's Get Moving! | Get Doncaster Moving](#)

### **Pupil Lifestyle Survey**

[Pupil Lifestyle Survey - Healthy Schools \(healthylearningdoncaster.co.uk\)](#)

### **Power BI – Joint Strategic Needs Assessment**

The Joint Strategic Needs Assessment (JSNA) is a process that identifies the current and future health and wellbeing needs of a local population. The dashboards show information about the employment, health, and wellbeing of people in Doncaster. We use this information to inform our policies and strategies to improve the lives of everyone in the Doncaster area.

[Joint Strategic Needs Assessments - Team Doncaster](#)

### **Community Safety**

The Safer Stronger Doncaster Partnership Community Safety Strategy can be found at - [The Safer Stronger Doncaster Partnership - City of Doncaster Council](#)

If you’d like to stay informed about crime and ASB in your community, you can find detailed crime statistics for your neighbourhood at [www.police.uk](http://www.police.uk).

If you would like further information about making Doncastr a Safer City please see - [Making Doncaster a Safer City - YourLifeDoncaster](#)



To report issues or concerns, visit [www.yourlifedoncaster.co.uk/safer-city-how-to-report-issues](http://www.yourlifedoncaster.co.uk/safer-city-how-to-report-issues)

### **Community Investment:**

Investment Map: [Doncaster Delivering Together Investment Plan - Team Doncaster](#)

### **Population Health Management**

#### **Interactive Map**

To access and identify assets at ward and locality level please use the following interactive map:

<https://www.google.co.uk/maps/d/viewer?mid=17BayPsljJ1OUq6U4OFbk9FKLYL2-wDZN&ll=53.50909620569456%2C-1.1365028000000032&z=14>