



Denaby Main Community Profile

Well Doncaster

Community Led Health and Wealth

Empowering people in Doncaster to live better, healthier, and happier lives.

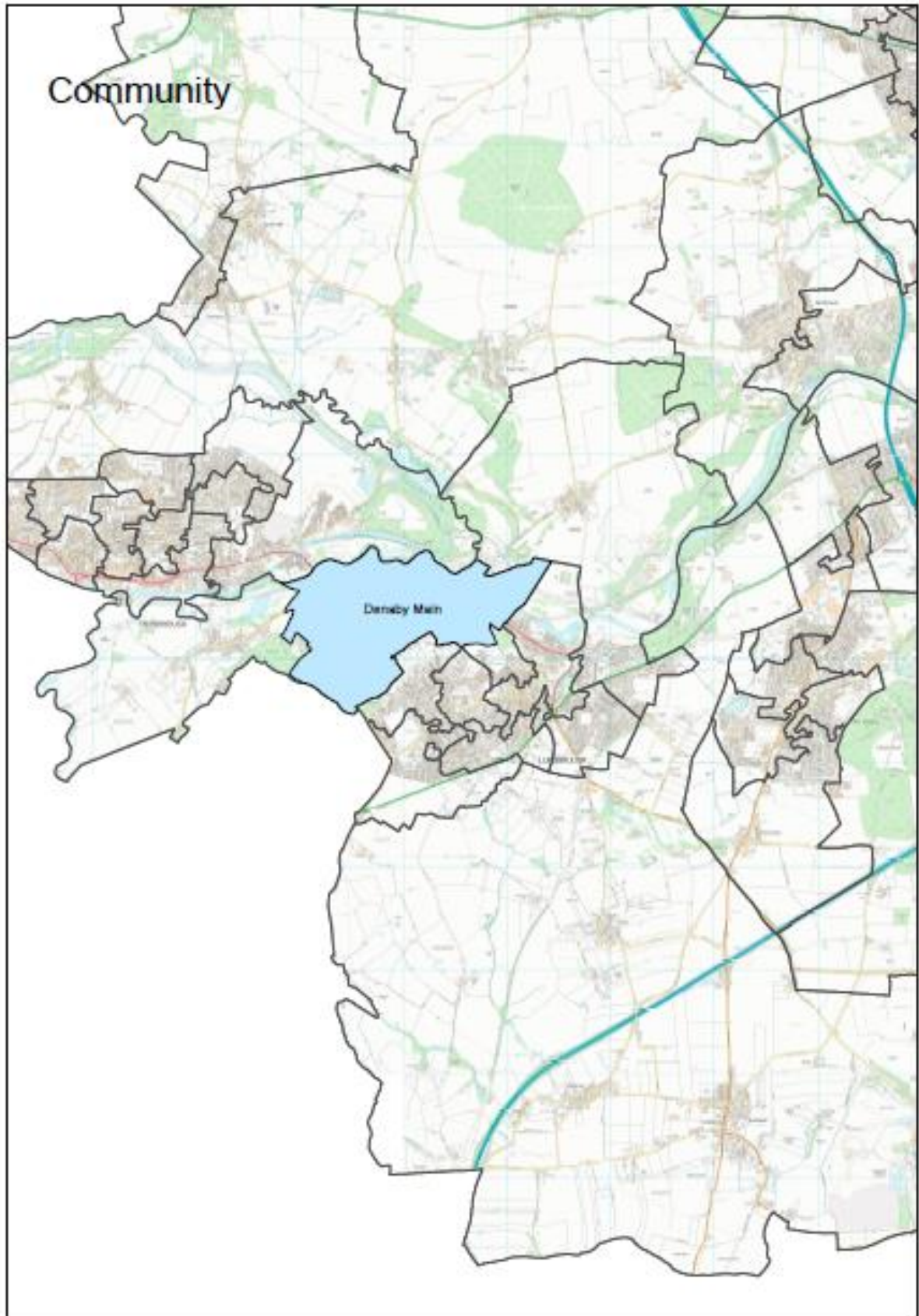
www.welldoncaster.uk

Well Doncaster
**Community
Wealth Builder**

Well Doncaster
Be Well



**City of
Doncaster
Council**



This Report:

This report uses a population health management approach to looking at the health of a whole group of people like a town, neighbourhood, or community, instead of just focusing on one person at a time. It is designed to help community leaders, services, residents etc. understand what strengths of both people and place, whilst also looking into what health challenges are common in that group, what services are needed most, and where help is lacking. By using data and trends, this Community Profile can inform tailored ways to keep people healthy, prevent illness, and make sure everyone gets the care they need. By focusing on prevention, early intervention, and coordinated care, together we can build healthier communities and support long-term, sustainable improvements in public health. The first Community Profile was written in 2023 and has been refreshed in 2025 to reflect the current opportunities and challenges of the community.

This report focuses on the community of Denaby Main, part of the Conisbrough ward in the South of the City and begins with a summary outlining key information and priorities. This document includes conversations with communities, ward members, community organisations, faith groups, residents and other organisations who work in the area. This document is shared with the intention of supporting those conversations and sharing information that might not be readily available to local people.

To ensure each community is represented as accurately as possible, where possible, separate data and illustrations have been used. Data that is only available at ward level will be stated when included. Indirectly Standardised Ratios (ISRs) have been used throughout this document and have been used to compare data at community and ward level, against a reference population. ISRs show how often an event (such as deaths or hospital admissions) occurs in a population compared to what would be expected in a reference population, after adjusting for age differences. England is used as the reference population for ISR's throughout the document.



Denaby Main



IMD score of 63.99, placing it among the 10% most deprived neighbourhoods in England



38.5% of adults have no qualifications, and in some streets this exceeds 50%



Life expectancy is significantly lower than national averages—75.7 years for men and 79.4 years for women



Highest rates of preventable mortality in Doncaster



Educational attainment is 52% of pupils meeting KS2 standards and GCSE below the Doncaster average



77.5% of children across Denaby Main are living in poverty

Contents

This Report:	3
One Page Summary	7
Assets	9
Asset Maps	9
Business Assets	10
Health Assets	11
Community Assets.....	12
Assets in the Community	13
Population Health Management.....	13
Community Insight:	15
Appreciative Inquiry	15
Doncaster Talks	21
Ward Members.....	22
Health & Wealth:	22
Deprivation	22
Wealth Inequalities	24
Fuel Poverty	25
Employment	26
Citizens Advice Doncaster Borough.....	28
Food Poverty	30
The Bread-and-Butter Thing	30
Health Inequalities:	31
Life Expectancy	31
Long-term Health Conditions	32
Incidence of Death	33
Alcohol Intake	34
Smoking.....	34
Loneliness and Isolation	35
Childhood Development	35
Childhood Obesity.....	36
Childhood Smoking.....	37
Pupil Lifestyle Survey	37
Education	38
Pupil Lifestyle Survey	38
Family Hubs	39

Physical Activity:	41
Physical Activity Children and Young People	41
Sedentary Behaviour	42
Green Spaces & Parks	43
Community Information:	47
Population	47
Housing	47
Community Safety:	49
The Safer Stronger Doncaster Partnership:	49
Community Voice / Key Safety Concerns	49
Anti-Social Behaviour	50
Wellbeing Service	50
References	52
Appendix	52



One Page Summary

Denaby Main, alongside Old Denaby, forms part of the Conisbrough ward in South Doncaster. With a population of around 4,600, the area is characterised by high-density housing, predominantly social rented stock, and significant socioeconomic challenges. Denaby Main ranks as the 4th most deprived community in Doncaster, with an Index of Multiple Deprivation score of 63.99, placing it among the 10% most deprived neighbourhoods in England. Only 28.7% of households are free from deprivation, compared to 48.4% nationally, and income deprivation affects 21.2% of residents, well above the England average of 12.9%. Child poverty is severe, with up to 77.5% of children across Denaby Main living in poverty, and older people also experience high poverty rates. Fuel poverty impacts over 20% of households, and rent arrears have risen sharply, reflecting financial strain. Educational disadvantage is stark with 38.5% of adults having no qualifications, and in some streets, this exceeds 50%, limiting access to skilled employment. Unemployment stands at 6.1%, higher than borough and national averages, and long-term worklessness persists, with nearly 37% of adults never having worked.

Health inequalities mirror these economic divides. Life expectancy is significantly lower than national averages, 75.7 years for men and 79.4 years for women, and healthy life expectancy is reduced by over six years compared to England. Denaby Main has some of the highest rates of preventable mortality in Doncaster, driven by respiratory disease, circulatory conditions, and cancer. Lung cancer incidence is significant at 202.9 per 100,000, the highest in the city, linked to smoking prevalence of 29%, far above the national rate of 17.2%. Obesity and diabetes are widespread, with GP data showing adult obesity prevalence at 18.1%, nearly double the national average.

Alcohol-related hospital admissions are also elevated, and mental health concerns, including depression, self-harm, and feelings of isolation are common. Around 34% of older residents live alone, increasing vulnerability to loneliness. Childhood obesity rates at reception age have risen to 28.9%, and emergency hospital admissions for under-fives are higher than borough averages. Educational attainment remains low, with only 52% of pupils meeting KS2 standards and GCSE scores below the Doncaster average.

Despite these challenges, Denaby Main has strong community assets, including Family Hubs, local groups, and green spaces such as The Craggs and Denaby Main Memorial Park, which are part of regeneration initiatives like Sport England's Future Parks and the Dearne Valley Green Heart project.

Community Priorities:

- Reduce child poverty and improve family financial resilience
- Address high smoking prevalence and lung cancer rates through targeted health interventions
- Improve educational attainment and access to skills development

- Tackle obesity and promote physical activity across all age groups
- Enhance community safety and reduce anti-social behaviour
- Assets



Assets

Well Doncaster use a community centred approach which allows investment in supporting, working with, and empowering communities to facilitate a healthy community. The voice and role of our communities and taking a strength/assets-based approach to work with individuals, families and communities is crucial to the achievement of our overall vision. It is recognised that work is needed in the community to expand the understanding of who, how and what is accessed in the area. Greater knowledge of the identity of each community/ward will allow a more appropriate and effective response to community needs.

Asset Maps

Different types of assets found in Donaby Main are presented below. These have been separated into Community, Health, Educational and Business (the latter focuses mainly on businesses which have been considered to affect health conditions). Some assets will be shown on more than one map as they have functions that intersect different asset distinctions. It should be noted that these maps are a starting point in understanding the community and that further work is needed amongst the community to understand all the assets and how they are used. These maps will be updated alongside the Community Profile to highlight any changes.

Business Assets

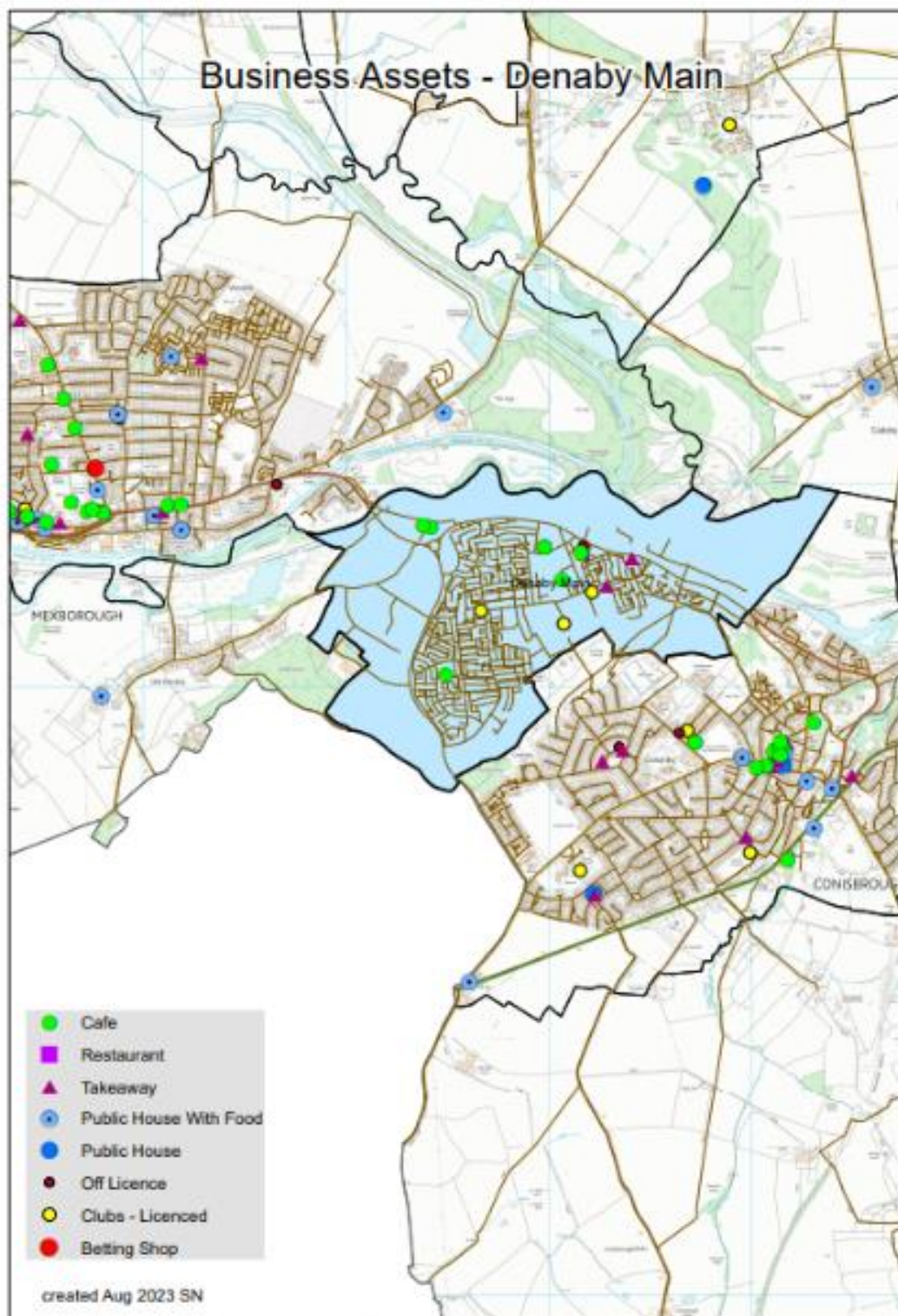


Figure 1. Business Assets

Health Assets

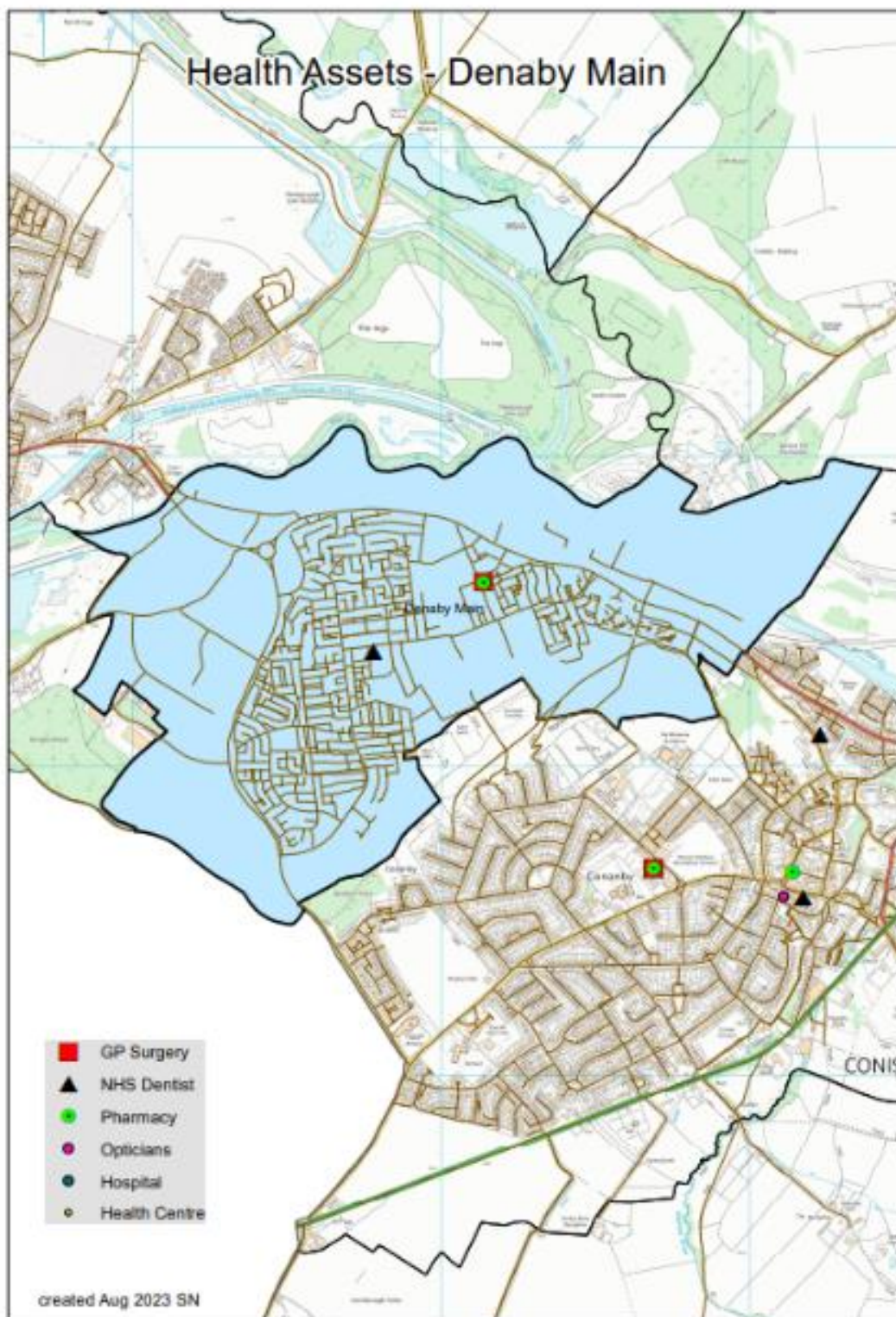


Figure 2. Health Assets

Community Assets

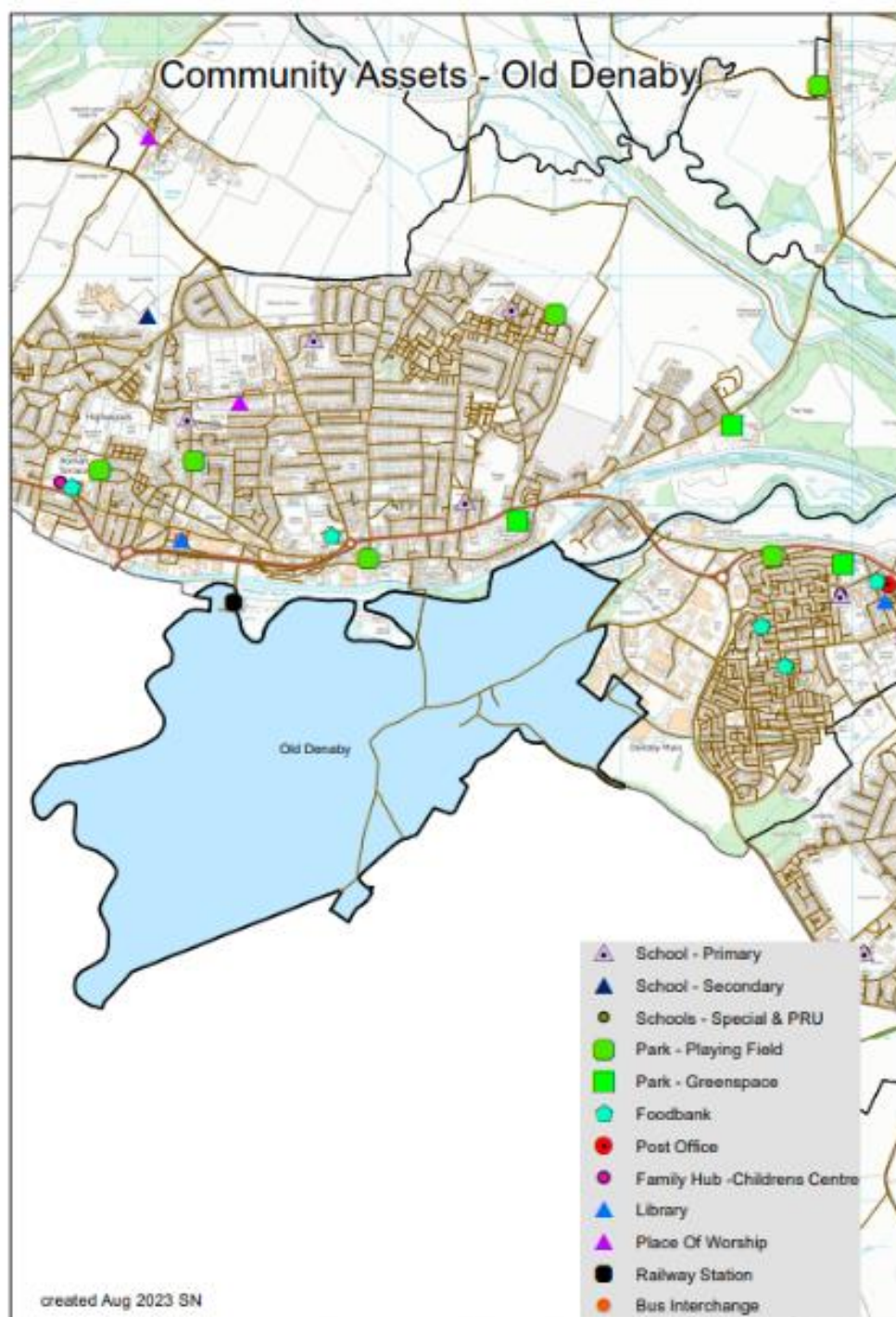


Figure 3. Community Assets

It is recognised that work is needed in the community to expand the understanding of who, how and what is accessed in the area. Greater knowledge of the identity of each community/ward will allow a more appropriate and effective response to community needs. Denaby Main remains a priority area for South Doncaster and ongoing work will continue to support it.

Assets in the Community

Population Health Management

It is vital to understand the impact on the community of nationwide influencing factors such as the COVID19 pandemic and cost of living crisis as well as local and regional issues and opportunities. Understanding community organisations and other assets operating in the community helps up to ensure appropriate and targeted support can be offered, and work can be implemented to manage any gaps or risks associated with changes. Well Doncaster undertake regular population health management insight with community organisations in Denaby Main, identifying their status and needs, and work with each group and partners to meet their goals. This is a living document and will be updated and adapted as needs are met and change. If you would like more detail on this, please contact welldoncaster@doncaster.gov.uk.

As part of a population health management approach, the following assets have been identified and themed around people and places:



INSTITUTIONS (Schools/colleges etc.)	PHYSICAL SPACE (Parks, car parks etc.)	LOCAL ECONOMY (Local profit Businesses)
<p>Schools:</p> <ul style="list-style-type: none"> Denaby Main Primary School St Alban's Catholic Primary School - admin@st-albans.doncaster.sch.uk Fullerton House School De Warren (Secondary) - admin@dewarenne.org.uk <p>Little Einsteins Day Nursery</p> <p>Health</p> <ul style="list-style-type: none"> Denaby Main Medical Practice Denaby Main Dental Practice Weldricks Pharmacy <p>Other:</p> <ul style="list-style-type: none"> Miners Welfare <p>Religious:</p> <ul style="list-style-type: none"> All Saints Church St Albans R C Church 	<p>Green space:</p> <ul style="list-style-type: none"> Crags Flower Park – outdoor gym equipment, summer events with Active Dearne and Family Hub Denaby Main FC grounds River Don Denaby Main Ings TransPennine Trails <p>St Leger communal halls:</p> <ul style="list-style-type: none"> St Leger Reresby Walk - base for Community Pantry and also Darling Buds of Denaby St Ledger Craganour Place CC – base for tara St Ledger Harrogate <p>Other:</p> <ul style="list-style-type: none"> Family Hub – runs multiple sessions, has a unused café and nursery attached Adventuring Angels Allotment Tom Hill – Holds youth sessions, boxing and ward councillors 	<p>Food & Beverage:</p> <ul style="list-style-type: none"> Balti Palace Denaby Main Express Costa Coffee Balti Palace Butchers McDonalds Greggs Hot Chocolate Lounge Teresa's Market Cafe Charlies Cafe Harrogate Court Rose Cottage Chinese <p>Shops/ Supermarkets:</p> <ul style="list-style-type: none"> Home Bargains ASDA Salvation Army Post Office JA Auto Team Roberts Motorbike Dealer Service Opal Motors

INSTITUTIONS (Schools/colleges etc.)	PHYSICAL SPACE (Parks, car parks etc.)	LOCAL ECONOMY (Local profit Businesses)
	<ul style="list-style-type: none"> Denaby Main Well Bean (Allotments) Community Library – Runs knit and natter, Walking group, FO crags meeting, Her Story, Angela Friendship Group, PAG and more. Hot Chocolate Lounge Mindful Activities Yorkshire CIC 	<p>Fitness & Gym facilities:</p> <ul style="list-style-type: none"> BMO GYMNASIUM Dearne Valley Leisure Centre <p>Care homes:</p> <ul style="list-style-type: none"> Flower Park Care home <p>Other:</p> <ul style="list-style-type: none"> Grays Court



INDIVIDUALS Key Individuals within the community	ASSOCIATIONS Local Groups/Clubs	STORIES Good news stories
<ul style="list-style-type: none"> Community Connector St Leger Champion Library Volunteers Parent Champion Panel Darling Buds Denaby Main Craganour Tara volunteers Conisbrough and Denaby Main Community Hub Denaby Main PAG Members Friends of Crag Denaby Main Well bean Garden by Plantaura Sue Oxley Leigh Armstrong Angela Cooper Brioni Ball Well Doncaster Team Tom Hill Youth Worker Your Place Staff Ward Councillors x3 PCSOs St Leger officer 	<p>Support:</p> <ul style="list-style-type: none"> Conisbrough and Denaby Main Community Hub – Delivering food and other support to most vulnerable. Partnership with Craganour TARA. Family Hub – Supporting families, parents and babies. Managed by Sue Davies, Currently run the following sessions: Sensory Fun, Baby Chatter Baby Play, Baby Massage, Growing friends, First Friends, Book Chatter Book Play, Stop Smoking Pregnancy, Breast Start. Fibromyalgia Peer support Group – Ran by Well. Doncaster Community library – Volunteer ran library. Offering social groups to community members, Friends of Crag meeting, PAG meeting and events. Tom Hill – Social safe place for young people. Hold sessions such as Young Carers programme from Heritage, , Boxing (Open to all), Hub Club, Boxing - Little Belters, Boxing (Open to all), , Super Stars, , , Rainbows, Brownies, Girl Guides, Rangers, Junior Youth Group, Volunteers, Senior Youth Group Volunteers, Five Football & Street Soccer. Mindful Activities Yorkshire CIC: Art Group, Wool & Threads, CraftChat Crafters, plus twice a month hosts a Form Filling Workshop at The Old Library. Strictly Dance Group at Ivanhoe 	<p><i>Since COVID-19 pandemic, the ward councillors and Craganour TARA had joined forces to provide food and support to the most vulnerable residents of Denaby Main and Conisbrough. They received 80 donated parcels, PPE and other support from Public health and DMBC. They have also gained volunteers from VAD. A resident of Denaby, has been more active since COVID-19 due to Active Dearne encouraging physical activity and going on daily walks as well as following Fun with Faye videos.</i></p> <p>https://www.yorkshire-sport.org/2020/07/20/walking-in-and-out-of-lockdown/</p>

INDIVIDUALS Key Individuals within the community	ASSOCIATIONS Local Groups/Clubs	STORIES Good news stories
<ul style="list-style-type: none"> • Neighbourhood Team • School Staff • Primary Care Network • Doctors Surgery Staff 	<p>TARA & PAGES</p> <ul style="list-style-type: none"> • Denaby Main PAG – Positive action group which plan projects and events. • Denaby Main Tara - Based in St Ledger Craganour Place CC and lead by John Allard, first Friday of the month <p>Other:</p> <ul style="list-style-type: none"> • Heritage Family Hub Programme – Education session ran by Heritage Doncaster at the Family hub for parents and children • Denaby Main Well Bean - Denaby Main allotments • Arts Group, Wool & Threads, Craft Chat Crafters at Mindful Activities CIC • Strictly Dance Group at Ivanhoe • Friend of Craggs – meet at the library, chaired by Tony Sellers and other members. Group who want to protect the green space, North Cliff Craggs. • Darling Buds – social group based in St Leger Reresby Walk Community Centre • Super Stars – social group for young people with autism at Tom Hill on Saturdays <p>Support:</p> <ul style="list-style-type: none"> • Citizens Advice Bureau at Mindful Activities Yorkshire every Tuesday and Wednesday • Staples and Greens Food Pantry • Bread and Butter Thing <p>Sport clubs:</p> <ul style="list-style-type: none"> • Denaby Main United F.C. - https://www.pitchero.com/clubs/denabyunited/news 	<p>https://www.doncasterfreepress.co.uk/health/community-group-doncaster-wants-help-people-mental-health-issues-non-traditional-way-2914311</p>

Community Insight: Appreciative Inquiry

The Well Doncaster Team undertake Appreciative Inquiry (AI) within communities to gather insight to support code signing action plans with the community. Armstrong (2020) suggests in 'A changing world, again. How Appreciative Inquiry can guide our growth' that reframing the questions in light of a crisis like Covid-19 and drawing on strengths and assets from past positive experience will help participants as they restructure their community. The AI questions are structured to pull out the successes of the past and present, to seek new potentials and possibilities and build on those through the Dream and Design stages. Denaby Main was the first community Well Doncaster worked with, dating back to 2015. Appreciative Inquiry in Denaby Main has

gathered insights through multiple engagement cycles since 2015, totalling 1,060 responses. Recent years show strong involvement from children and young people, shaping priorities for community development.

The Appreciative Inquiry will include the following steps:

1. **Discovery Phase** – This will involve engagement with the residents of Hyde Park to find out what is working well in the community. Responses will be themed to allow priorities of the community to be established.
2. **Dream** – Residents and key stakeholders will be invited to attend an initial workshop to discuss what ideas they have for their community and how these will meet the priorities highlighted in the discovery phase.
3. **Design** – All attendees are invited back for a second workshop to develop an action plan to direct work for the community.
4. **Destiny** – A collaborative way of working and investing resources to meet the actions from the previous phase.

Appreciative Inquiry activity in Denaby Main has gathered insights through multiple engagement cycles since 2015, totalling 1,060 responses. Recent years show strong involvement from children and young people, shaping priorities for community development. Below is a thematic analysis of responses from all conversation from 2015-2025.

THEME	SUB THEME	QUOTES	COMMENTARY
Green Spaces	Active engagement with green spaces	"Would love to see the park revamped and is willing to help in any way". DEN-15 -627	Green spaces and parks have played a significant role in shaping people's experience of community in Denaby Main over the past decade. The thematic analysis reveals a deep appreciation for nature and outdoor spaces, alongside concerns highlighted around maintenance, safety, and accessibility of these community assets. Residents express the importance of areas of green spaces for mental wellbeing, relaxation, and escapism. Denaby's own parks, as well as nearby attractions like Conisbrough Castle, Thybergh Park, and Hexthorpe Park, are also mentioned as points of interest. These assets are used for many different reasons including family outings, community events, and leisure opportunities. The fact that residents are willing to travel to other parks such as Clifton Park in Rotherham suggests both a desire for variety and a recognition of limitations in local offerings. In contrast to the positive views and comments there does appear to be concerns with the condition and safety of local parks. Vandalism, lack of amenities, and anti-social behaviour undermined the usage and enjoyment of these spaces for locals.
	Valuing escapism from day-to-day life	"Denaby Main once had parks for kids that were safe-would like to see this again". DEN-15-108	
	Using nature for wellbeing	"I like to go out and utilise the local parks" – DEN-24-4983	
	Physical Assets	"Quiet and peaceful location" – DEN-24-4977	
	Parks	"Utilise local parks as they make me feel happier" – DEN-24-4983	
		"Near to nature" – DEN- 24-4974	
		"Being outside" – DEN- 24-4790	
		"Conisbrough Castle, Thybergh Park. Skate park, play park in Denaby" - DEN-24-4790	

		<p>"Came to Hexthorpe Park as saw free summer event. Really good park, nothing like it close to them other than Clifton Park in Rotherham." – DEN- 24- 5038</p>	<p>There appears to be a community willingness to engage in revitalisation efforts indicating a readiness to participate in local improvement initiatives. This suggests that with the right support and investment, there is potential to restore and enhance these spaces.</p> <p>The Denaby Main memorial park has been selected as a Future Park through Get Doncaster Moving's project. This work is being led through previous community engagement sessions where the children and young people have provided ideas as to how they would like the park to develop, building on community ownership and creating wealth to ensure that the local residents feel included and listened to. Denaby Main has several parks that are cherished. There appears to be a link from the research to community wellbeing and identity which is hoped that the current project will strengthen. Moving forward, efforts to revamp and maintain these areas, coupled with community involvement and safety measures, could significantly enhance quality of life in Denaby.</p>
Assets	<p>Services</p> <p>Shopping</p> <p>Affordability</p> <p>Market</p> <p>Social connections</p> <p>Community Pride</p> <p>Library</p> <p>Community groups</p> <p>Community</p>	<p>Home bargains and shuttle bus'DEN-15 -842</p> <p>Denaby Main once had a library with computers to use for job searching- would like to see this again" DEN-15 -108</p> <p>"Would love to see the park re vamped and is willing to help in any way". DEN-15 -627</p> <p>'Home bargains success' DEN-15-59</p> <p>the family hub is great" – DEN- 24-4982</p> <p>"Asda, Sainsburys, charity shops" – DEN- 24-4790</p> <p>"Local business" - DEN- 24-4997</p> <p>"Events like this one" – DEN- 24-4970</p> <p>"Do more things, take children to more places to have fun" – DEN-24-4970</p> <p>"The events that happen" – DEN-24-4982</p> <p>"Affordable summer places to visit" – DEN-24-5038</p>	<p>Over the past decade, Denaby Main has gained a rich variety of community assets that contribute to the social, economic, and emotional wellbeing of all its residents. These assets include retail outlets, public services through to social spaces and community events that have been celebrated and critiqued, reflecting a community that is proud of its strengths but also aware of its developing needs. One of the most consistently praised assets is Home Bargains. Access to Asda, Sainsbury's, charity shops, and local businesses has been highlighted as important for day-to-day living. These services not only provide convenience but also support affordability, which is a recurring theme.</p> <p>The market is another valued feature, its popularity underscores the importance of accessible, community-oriented commerce in fostering local pride and economic activity. The Family Hub has emerged as a vital support organisation, offering varied services that residents deeply appreciate. Community events such as the flower park fayre are also seen as highlights of the local calendar, though there is a clear desire for events to become more frequent with diverse activities. These events are not just recreational; they serve as crucial access points to services and information. The Denaby Main Well Bean allotment is mentioned as a cherished space, reflecting the community's appreciation for shared, productive environments. Since reopening the Denaby Main Library also offers a multitude of different sessions,</p>

			<p>from social groups to general support and drop-in sessions. This highlights that the public services play an important role in community life.</p> <p>While Denaby Main boasts a range of assets, there is a parallel narrative of loss and underutilisation. Many residents have lived in Denaby Main for over two decades, and their deep-rooted connection to the area fuels a strong sense of ownership and responsibility. This local community spirit is a powerful asset and one that with the right work could be harnessed to co-create solutions and drive local development.</p>
Personal connection	<p>Family and Friends</p> <p>Community contact</p> <p>Intergeneration Resilience</p> <p>Sense of Belonging</p>	<p>I have lived in Denaby Main all my life, the community spirit was the best thing about Denaby, families are really close” DEN -18</p> <p>“Down to earth people, everyone knows everyone”</p>	<p>Personal connection has always been a defining feature of life in Denaby. Denaby Main has a community built on long-standing relationships, shared history, and a strong sense of belonging. These connections—among family, friends, and neighbours all help to form the emotional and the social backbone of the area. Many residents speak with pride about their lifelong connection to Denaby Main and reflect a deep intergenerational presence. The majority of residents who we spoke with had lived in Denaby Main for more than 21 years, highlighting a remarkable level of residential stability and continuity. Through time these connections have enabled a culture where “everyone knows everyone,” creating a sense of familiarity and mutual support that is increasingly rare in modern communities. These strong social bonds contribute significantly to residents’ sense of identity and emotional security. The presence of close-knit family and friend networks has been a key factor in community resilience within Denaby. These relationships provide support that help residents navigate challenges, from everyday stresses to social issues. The community’s ability to “pull together” in times of need is a recurring theme. Despite these strengths through the generations some residents express a sense of loss, which has been impacted by rising anti-social behaviour and gang activity. This points to a changing community which values its past but is grappling with present-day challenges. While some residents feel that the traditional sense of community has diminished, others still find comfort and safety in their local networks. This suggests that the foundation for strong personal connection remains intact and could be revitalised through targeted community-building efforts. Events, shared spaces, and intergenerational activities could play a key role in reinforcing these bonds.</p>

Accessibility and transport	Accessible Assets	Bus service is great' DEN-15-59	<p>Accessibility and transport have consistently been highlighted as strengths within the Denaby Main community over the past decade. The thematic analysis reveals a generally positive perception of local transport services and the convenience of accessing essential amenities. Comments reflect a strong reliance on and satisfaction with these services. The availability of transport options that connect Denaby Main to Cities like Doncaster and Sheffield has also been noted as a significant benefit, enhancing mobility and access to broader services and opportunities. Many residents value the fact that it is convenient to have accessible assets nearby. This suggests that Denaby's layout supports a lifestyle where daily needs can be met without the necessity of a car, which is particularly important for elderly residents, families with young children, and those without private transport which reflects a high number of residents in the village. Ease of access to local services such as shops, markets, and health centres has been positively acknowledged.</p> <p>While the feedback is largely positive, the commentary hints at opportunities for improvement. For example, while transport links are appreciated, there is no detailed mention of frequency, reliability, or coverage factors that may affect accessibility for some residents. Additionally, as Denaby Main continues to evolve, maintaining and enhancing these transport services will be crucial to ensuring equitable access for all community members.</p>
	Public Transport	'Free bus is well used' DEN-15 -326	
	Convenient Locations	'OAP free bus pass' DEN-15 -60	
	Strong County Transport links	<p>"Everything in walking distance" – DEN-24-4908</p> <p>"Convenience of having everything near" – DEN-24-4790</p> <p>"Everything is close by" – DEN-24-4909</p> <p>"Ease of access to services" – DEN-24-4978</p>	
Safety	Safety		
	Community Inclusion	"Denaby Main once had parks for kids that were safe-would like to see this again". DEN-15-108	<p>Over the past decade, safety in Denaby Main has emerged as an evolving concern among residents. The thematic analysis reveals a complex picture—one that shows a strong sense of community resilience on one hand, and a growing unease around crime, anti-social behaviour (ASB), and drug-related activity on the other. Many residents express a sense of loss regarding the safety and cohesion that once defined Denaby. Residents appear to reflect a nostalgic longing for a time when public spaces were perceived as secure and welcoming. The rise in visible drug activity, gang presence, and vandalism has led to a deterioration in the perceived quality of life. Some of the feedback paints a picture of a community grappling with significant safety challenges. Data shows a split in residents experience local safety. While some residents report feeling mostly safe often attributing this to strong community ties, others feel increasingly vulnerable. This divergence suggests that safety in Denaby Main is not uniformly experienced and may vary by location, age, or social connection; elderly residents</p>
	Sense of Belonging	community safety and ASB continues to be an issue. DEN – 18	
	Perceived Crime	<p>"Crime, drugs, litter" DEN – 20-03</p> <p>"more idiots coming into the village teenagers with no respect are spoiling it" DEN -20-4</p> <p>"Yes there's been a big change. More disrespectful people. Strangers moving in and teenagers that do what they want" DEN -20-5</p> <p>"people getting involved with gang culture"</p>	

		<p>"there's a lot of vandalism and gangs and drugs" DEN -20-15</p> <p>"no safety concerns" – DEN-24-4908</p> <p>"I mostly feel safe as part of the community" – DEN-24-4974</p> <p>"lots of activities to do and these make me feel safe and happy" – DEN-24- 4977</p> <p>"the people locally aren't all great and sometimes there is a lot of antisocial behaviour" – DEN-24- 4979</p> <p>"things have changed since all the gangs have been separated and locked up which worked really well" – DEN-24- 4980</p>	<p>express concern about their vulnerability, while others find comfort in the familiarity of their neighbourhoods. The degrading of public amenities, particularly parks, is a recurring theme. The lack of safe, accessible areas for children and families contributes to a broader sense of insecurity and is an area that people would like to see improve.</p> <p>Despite these challenges, there are areas of hope. Some residents note improvements following law enforcement actions, such as the separation and incarceration of gang members. Others highlight the role of community events and social activities in fostering a sense of safety and belonging.</p> <p>Safety around Denaby Main is an ongoing issue. While the community retains a strong foundation of resilience and mutual support, the persistent concerns around crime and ASB demand sustained attention. Addressing these issues will require a combination of improved public services, community-led initiatives, and targeted interventions to restore trust and reclaim public spaces.</p>
--	--	--	---



Doncaster Talks

In 2019 Doncaster Talks undertook insight across the borough. Responses were separated into wards and thematically analysed. Across Conisbrough and Denaby Main ward, 188 responses were received (1.14% of the Ward) and the main themes on what people liked about the area, what could be improved, and what the borough should focus on are displayed in the table below

CONISBROUGH & DENABY
Like <ul style="list-style-type: none">• Good community spirit• Historic building – castle and church• Access to greenspace and countryside
Improve <ul style="list-style-type: none">• Reducing ASB – problems with off-road bikes and drugs in particular• Improving appearance of place (more flowers, etc) and improving cleanliness (by cracking down on fly-tipping, littering and dog-fouling)• Improving quality of highways (pot-holes, roadworks etc)• Craggs mentioned as problematic area, throughout
Focus <ul style="list-style-type: none">• Cracking down on ASB• Better street cleanliness, enforcement, tackling dog-fouling• Building community spirit and sense of community – small community feel but wider Doncaster also, looking after citizens generally

Figure 4. Doncaster Talks Data Conisbrough Ward, City of Doncaster Council, 2019

Ward Members

The Conisbrough ward has three ward members who were elected in 2025



Councillor Jason
Charity

Conisbrough
Reform UK



Councillor Rachel
Reed

Conisbrough
Reform UK



Councillor William
Shaw

Conisbrough
Reform UK

Health & Wealth:

Health inequalities are avoidable differences across the population and between different groups within society. Health inequalities arise from the conditions in which we live, work and play. These conditions influence our opportunities for good health, how we think, feel and act, therefore shaping our health and wellbeing.

Deprivation

Evidence shows that people living in our most deprived areas face the worse health inequalities in relation to health access, experiences and outcomes. Deprivation covers a range of issues and refers to unmet needs caused by a lack of resources, including but not limited to finances, housing and education. It is measured in different ways including the Indices of Multiple Deprivation (IMD).

Denaby Main's IMD score in 2025 is 63.99, a slight decrease from 67.9 in 2019. Denaby Main is the 4th most deprived community in Doncaster. Old Denaby Main remains high at 60.83, down slightly from 64.7 in 2019 and is ranked 5th in the city.

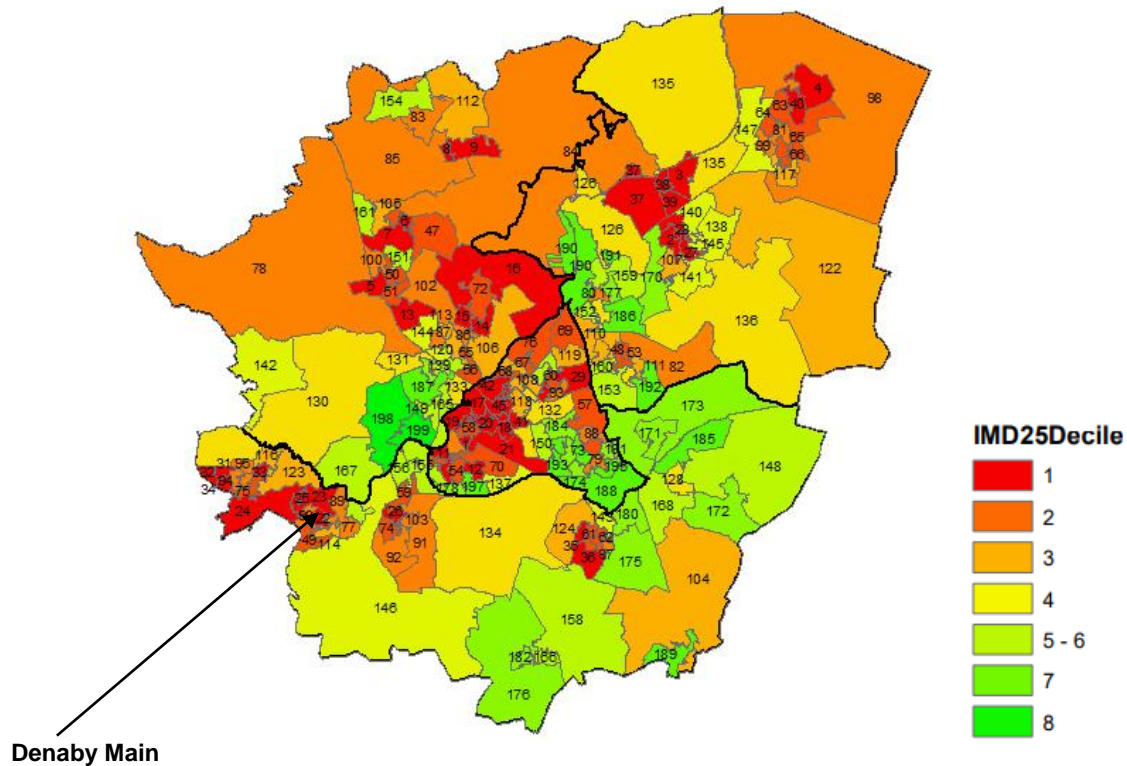


Figure 5. Deprivation Deciles Across Doncaster by Lower Super Output Area (LSOA), ONS, 2025.

The 2021 Census data has been used to produce estimates that classify households in England and Wales by four dimensions of deprivation: employment, education, health and disability and household overcrowding.

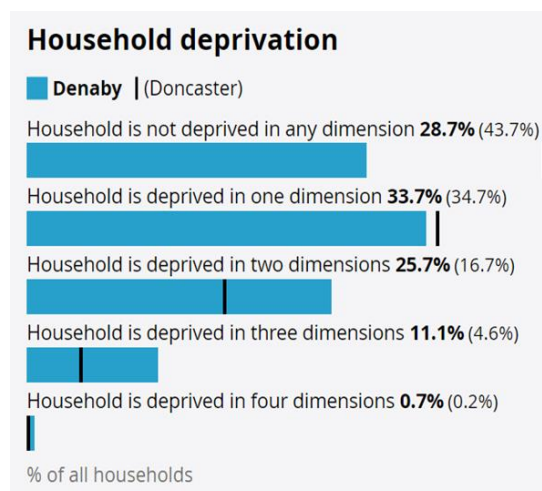


Figure 6. Household deprivation in Denaby Main, ONS, 2021

The Census 2021 data breaks down this information into household deprivation at a community level, comparing Denaby Main to Doncaster and England. 28.7% of

households in Denaby Main are not deprived in any dimensions which is significantly lower than Doncaster (43.7%) and England (48.4%). Similarly, 20.4% of households are deprived in two dimensions higher than Doncaster (16.7%) and England (14.2%) and households deprived in three dimensions (5.5%) are higher than Doncaster (4.6%) and England (3.7%). Furthermore, a high proportion of residents are suffering income deprivation (21.2%), higher than Doncaster (16.6%) and England (12.9%) along with high levels of socially rented housing (52.8%) compared to Doncaster (17.0%) and England (17.1%) which may be a contributing factor and should be considered when addressing health inequalities.

The areas surrounding Wheatley Street, Hickleton Street and Shephards Close are experiencing the highest levels of deprivation, with 4.1% of households deprived in four dimensions – the highest in the community and ward.

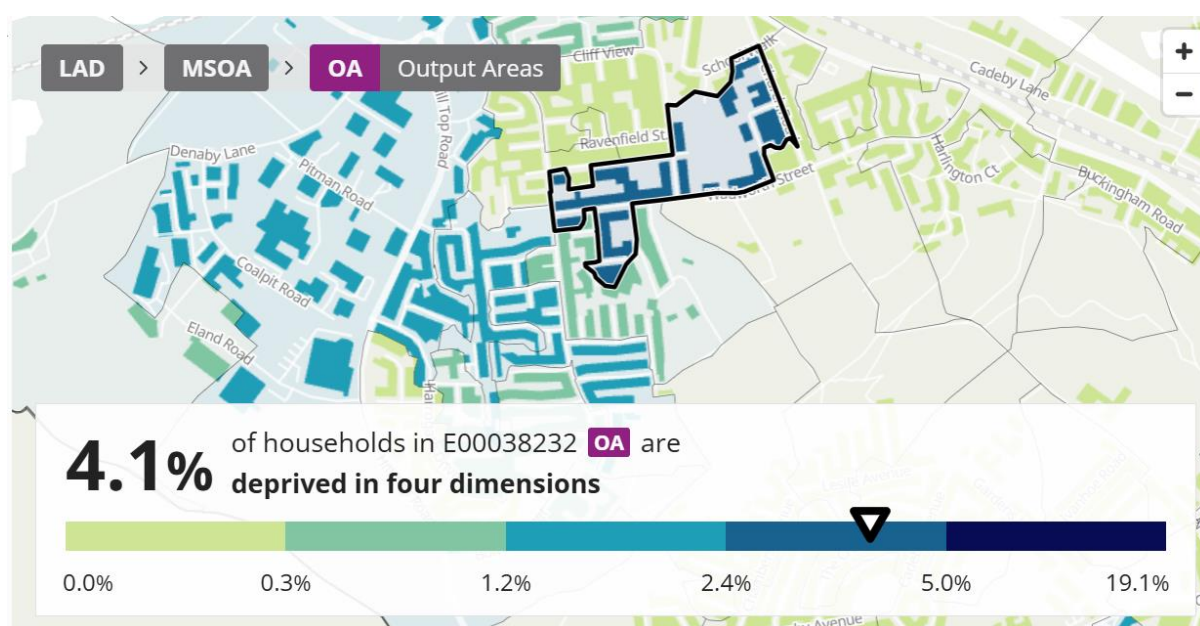


Figure 7. Percentage of Households Deprived in Four Dimensions, ONS, 2021

Wealth Inequalities

In the Conisbrough Ward many residents are currently living in poverty, reflecting the high levels of multiple deprivation. Unemployment figures for the ward have increased from 5% in 2021 to 6.1%, higher than the Doncaster borough rate of 3.2% and the national rate of 5.0%. Although long-term unemployment levels have reduced to 2.8%,

In 2025, 47.1% of Conisbrough North Middle-layer Super Output Area (MSOA), which include Denaby Main, are experiencing poverty, higher than the Doncaster average of 29.3%. This is a significant increase from 2019, where 28.3% of Consibrough North residents were living in poverty.

The proportion of older people in poverty in Conisbrough North (42.3%) is higher than the Doncaster rate (19.4%), similarly to all people, this has increased (from 30.2%) since 2019.

Furthermore, 65.6% of children are living in poverty in Consibrough North MSA, higher than the Doncaster average, 47.1%, an increase from 32.9% in 2019.

When considering the change from 2019 to 2025 data, it is important to note that there have been changes to the calculation of the source data, the income deprivation domain in the IMD. While it can be inferred that there has been an increase in the proportion of people living in poverty, the changes in this indicator may contribute to the significance of this change.

At a community level, the data differs slightly, with 57.5% of Denaby Main residents experiencing poverty, 54.1% of older people and 75% of children, significantly higher than Doncaster rates.

Similarly, in Old Denaby, 56.8% of residents experience poverty, 53.9% of older people and 77.5% of children.

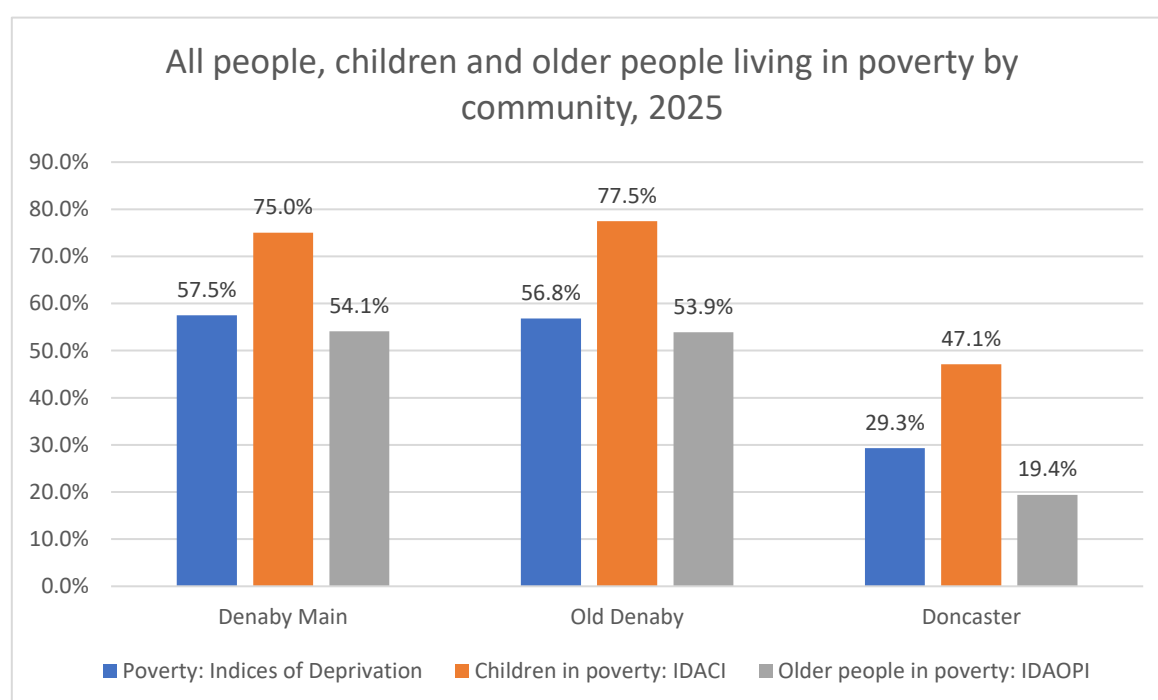


Figure 8: Poverty Prevalence, IMD, 2025

Fuel Poverty

Fuel poverty is defined as a household living on a lower income which is not deemed reasonable enough to warm a home sufficiently. In 2020, (20.2%) of households were unable to warm their homes to a reasonable standard which is higher than Doncaster (18.8%) and significantly higher than England (13.2%). The recent cost of living crisis including rising fuel costs and inflation may be a contributing factor.

Within the Conisbrough and Denaby Main ward, there is a big difference between different areas with some reporting figures below the Doncaster (10.8%) and national (10.9%) fuel poverty averages, and other areas reporting significantly higher percentages. In the Denaby Main area, the lower super output area (LSOA) Doncaster 032D is the most fuel poor area with 13.4 % of households classified as fuel poor. Both Denaby Main and Old Denaby Main have high levels of social housing, with terraced or semi-detached the most likely property. The fuel poverty figures for these two areas indicate that the housing stock is of poorer quality.

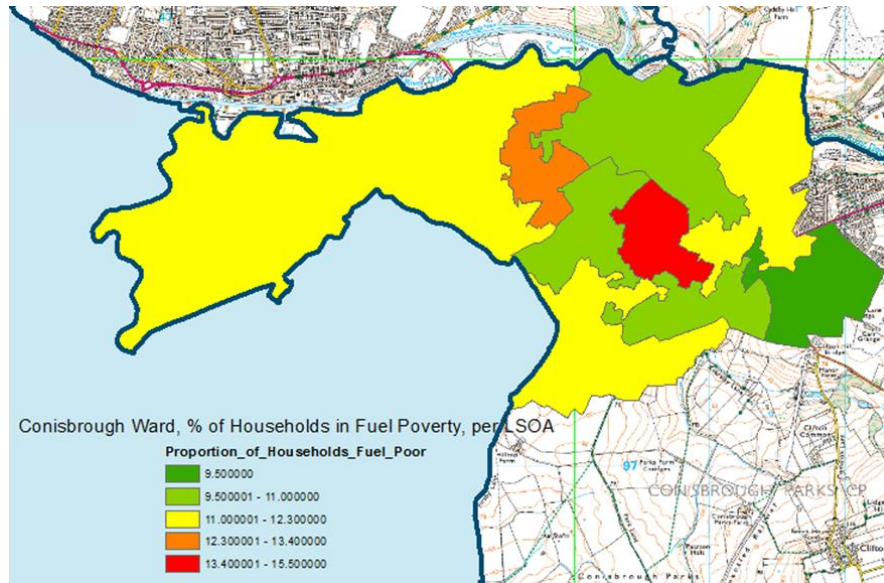


Figure 9. Fuel Poverty in Denaby, ONS, 2020

Employment

According to the 2022 Doncaster Joint Strategic Needs Assessment (JSNA) and labour market data, overall unemployment in Doncaster has fallen to 3.2% in 2024, below the national average, yet Denaby Main continues to experience entrenched deprivation. Economic inactivity remains high, with 9.4% of adults across Doncaster having no qualifications, limiting access to better-paid work. Denaby Main stands out with 37.0% of residents aged 16 and over who are not in employment and have never worked, compared to 27.2% in Doncaster and 25.6% nationally, with the Danum Court and Grange Way area reaching 49.6%.



Figure 10. Over 16 unemployment, ONS, 2024

In Denaby, of those who are in work, the majority work full time (61%), which is like figures for Doncaster (60.7%) and England (59.1%) and 29.8% work part time, also similar to Doncaster (28.9%) and England (29.8%). Occupation figures in figure 11 highlight those in Elementary Occupations (19.2%) are significantly higher than Doncaster (16.5%) and England (10.5%) along with Caring, Leisure and Other services (15.2%), higher than Doncaster (10.3%) and England (9.3%). Traditionally these roles are low skill and low pay roles. Furthermore, 8.6% are employed in Professional Occupations, lower than Doncaster (12.8%) and England (20.3%), usually requiring higher skill levels, education and receive higher pay.

According to the 2021 Census, high percentage of people aged 16 years and older have no qualifications (38.5%) compared to Doncaster (24.6%) and England (18.1%). Streets such as Ravenfield Street (54.2%) have particularly high levels of residents with no qualifications. Furthermore, residents who are qualified to Level 4 and above are significantly lower in Denaby Main (14.2%) than Doncaster (22.7%) and England (33.9%).

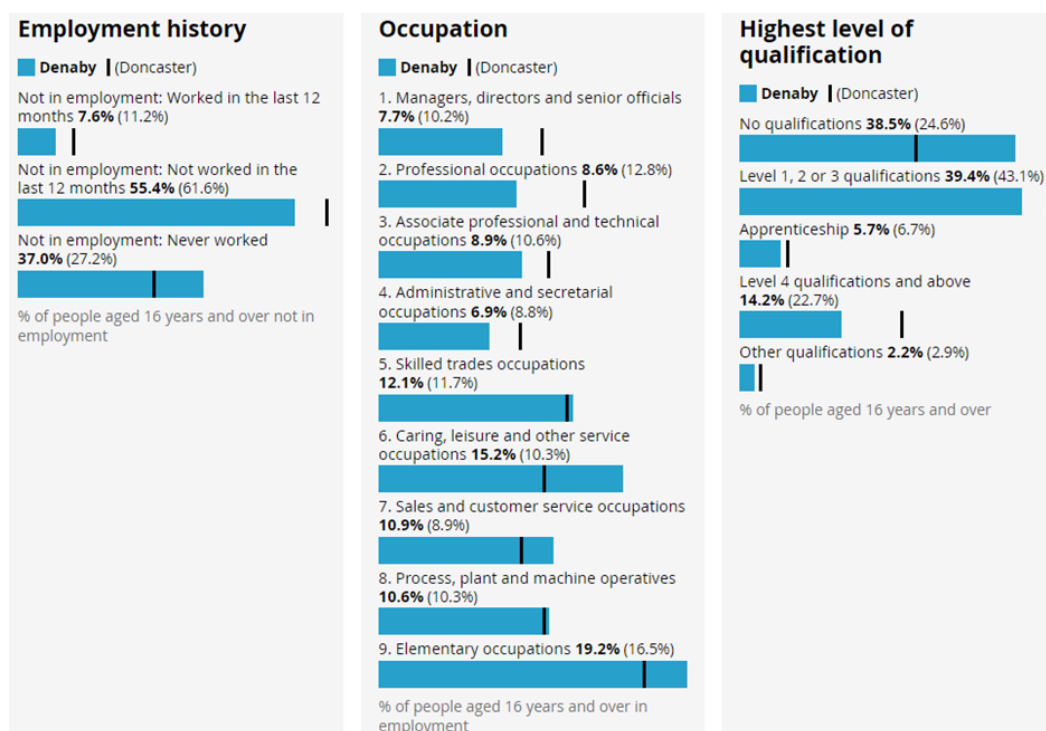


Figure 11. Employment history, Occupation and Highest Level of Qualification, ONS, 2021

Citizens Advice Doncaster Borough

Citizens Advice Doncaster Borough (CADB) are an independent charity and part of the Citizens Advice Network across England and Wales. They provide free, confidential and impartial advice and campaign on money, benefit, housing or employment issues affecting people's lives. There is currently a CADB outreach site at Rossington family hub, the Rossington Practice, Edlington Helping Hands, Stone Castle Centre Conisbrough, The Old Library Denaby Main and the main Mexborough office. The figures of interactions, clients, postcodes covered and total income gain can be seen from 2021/22 to 2024/25 in table 1. There was a large increase in new interactions and total income gain in the year 2023/24, which then decreased in 2024/25.

Data collation information	Fiscal year 2021/22	Fiscal year 2022/23	Fiscal year 2023/24	Fiscal year 2024/25
Clients	213	215	252	190
New Interactions	852	1086	3146	715
Postcodes covered	145	143	150	138
Repeat Interactions	104	75	342	146
Total Income gain	£153,504	£187,912	£635,652	£246,045

Table 1. Conisbrough and Denaby Main CADB Data 2021/22 to 2024/25, Citizens Advice Doncaster Borough, 2025

Reasons for seeking support can be seen in figure 12. The most common reasons for accessing support from CADB are benefits and universal credit, housing and benefits and benefits and tax credits.

Issue 1 - Top 5

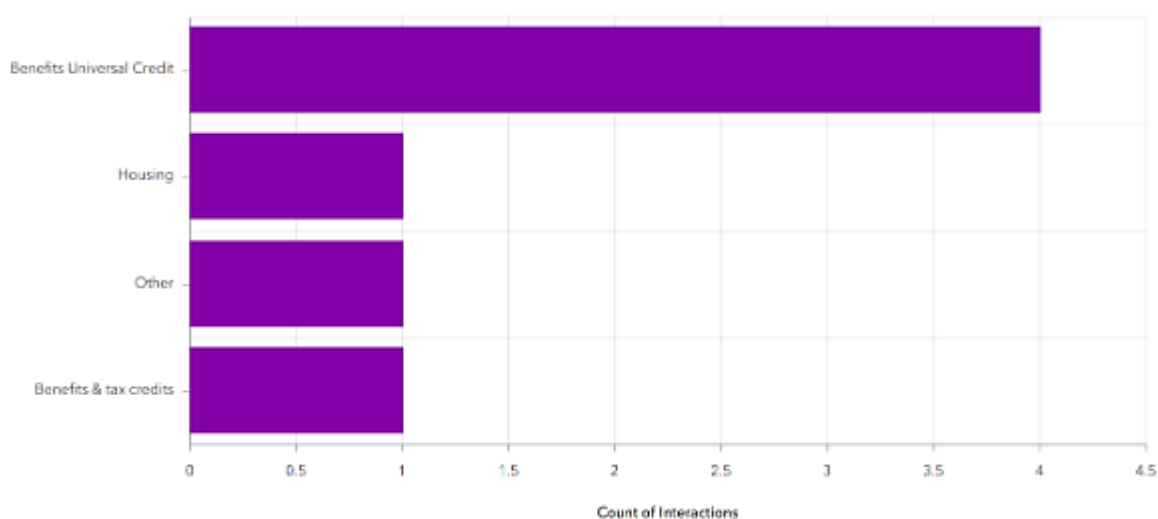


Figure 12. CADB Access Reasoning, Citizens Advice Doncaster Borough, 2025

Food Poverty

There are 5 foodbanks located in the South Locality, two of which are in Denaby, Denaby Main Primary Academy Community Hub and Green and Staples at Mindful Activities Yorkshire. The most common household types needing support are Individuals, followed by families. The South of Doncaster ranks as second in relative level of support compared to the rest of the city, highlighting the need to address poverty, food poverty and low income. Top reasons for accessing support include the cost of living crisis, debt benefit delays and low income.

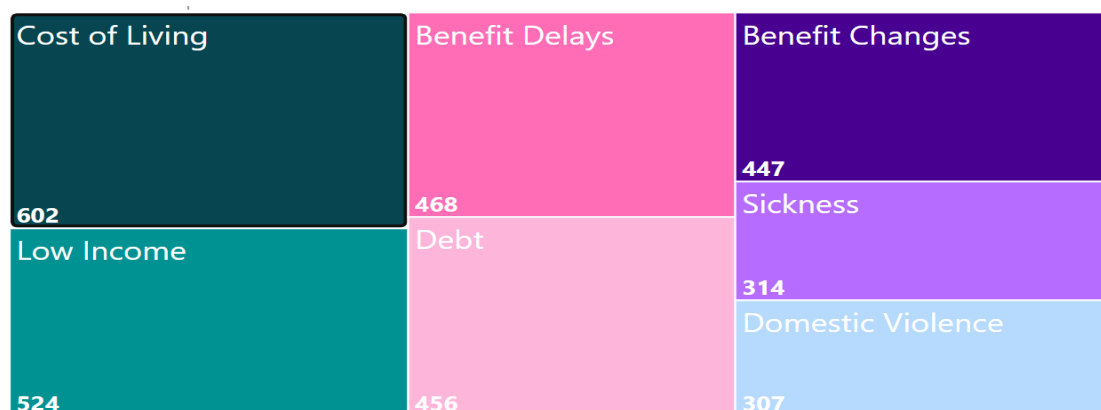


Figure 13. Foodbank Support Reasons City of Doncaster Council 2025

The Bread-and-Butter Thing

The purpose of The Bread-and-Butter Thing (TBBT) addresses moderate food insecurity helping minimise demand on crisis support i.e. foodbanks. They also reduce poverty premiums that families in low-income areas can face, reduce waste by identifying edible surplus food in the UK food sector and redistributing it, to build resilience within the communities. TBBT establish a mobile food club which gives access to nutritious and affordable food taken into the heart of communities starved of money, food, and resources. There is no eligibility, and parcels are based on a weekly shop and provides essential produce for family eating – fresh fruit and veg, chilled goods and cupboard staples. Deeply discounting a family's shopping and stretching their budget. A members average weekly saving is £26.50.

Throughout the City there are five Hubs based in the following communities: Mexborough, Rossington, Carcroft, Thorne and Hexthorpe. Each site offers 80 residents the opportunity to access affordable food, ensuring 400 residents per week get the help they need. In 2024 across the five sites 1596 volunteering opportunities were accessed with 3241 residents accessing the support

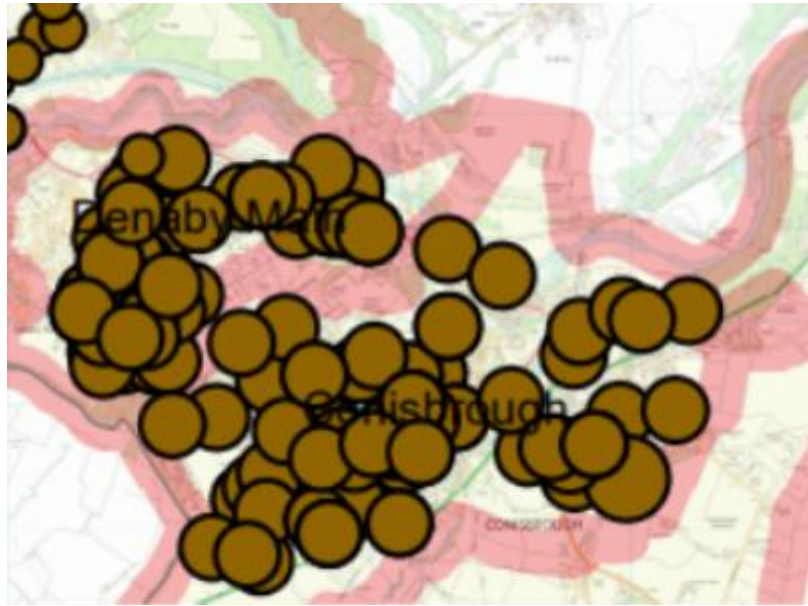


Figure 14. Postcode Map of The Bread-and-Butter Thing Membership, The Bread and Butter Thing, 2025

Health Inequalities:

Life Expectancy

People living in the Conisbrough & Denaby Main ward have a lower life expectancy and live more years in poor health in comparison to Doncaster and England. Life expectancy for men is significantly lower in Conisbrough & Denaby Main at 75.7 years, compared to Doncaster (77.8 years) and England (79.1 years). Life expectancy for women in Conisbrough & Denaby Main is 79.4 years, which is lower than Doncaster (81.0 years) and England (83.1 years).

Both men and women in Conisbrough & Denaby Main are experiencing significant inequalities in terms of their healthy life expectancy—the number of years living in good health. Men are expected to develop a health condition at 54.5 years and women at 55.7 years, compared to Doncaster (57 years for both) and the England average of 61.5 years for males and 61.9 years for females.

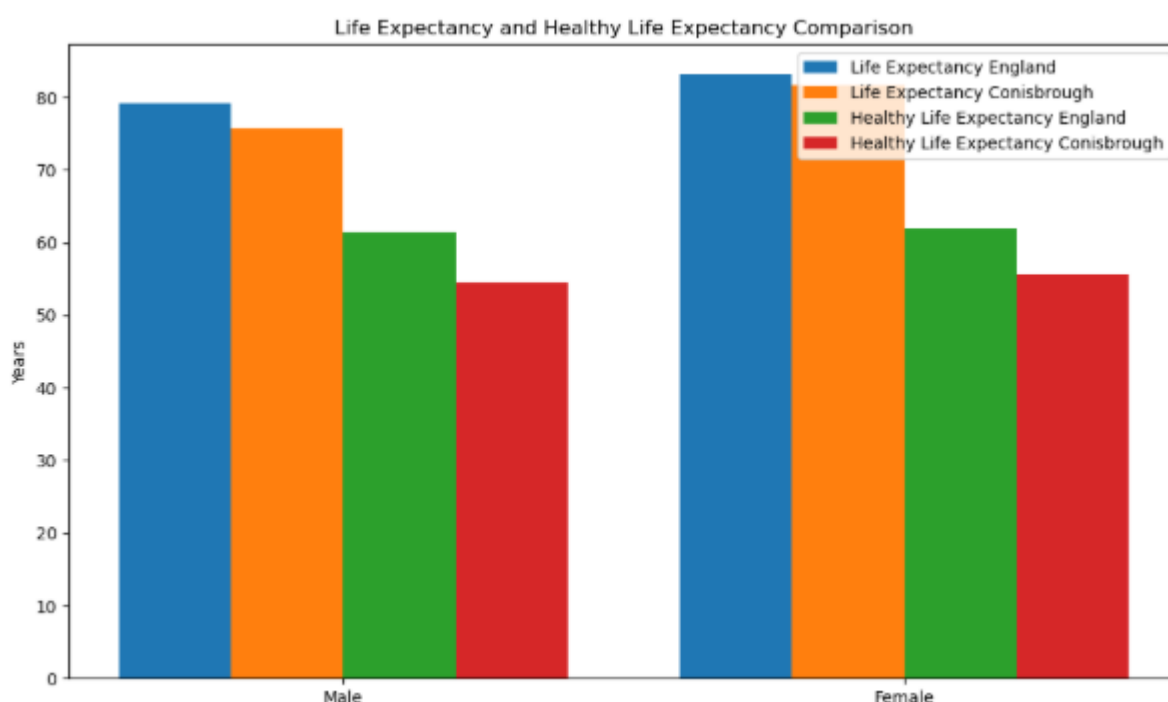


Figure 15. Life Expectancy, ONS, 2023

Long-term Health Conditions

The proportion of residents self-reporting poorer health in Denaby Main is considerably higher than the borough and national rates. Approximately 25.5% of the population reported living with a limiting illness or a long-term health condition compared to 21.7% in Doncaster and 17.6% nationally and is the same as reported in 2021. Denaby Main has significantly high rates of respiratory conditions, obesity and diabetes. Higher prevalence of lung cancer (202.9 per 100.0 compared to England when using ISR) and rates are the highest of any ward in the city (137.1 per 100.0 compared to Doncaster). This could be linked to the higher rates of smoking in the area.

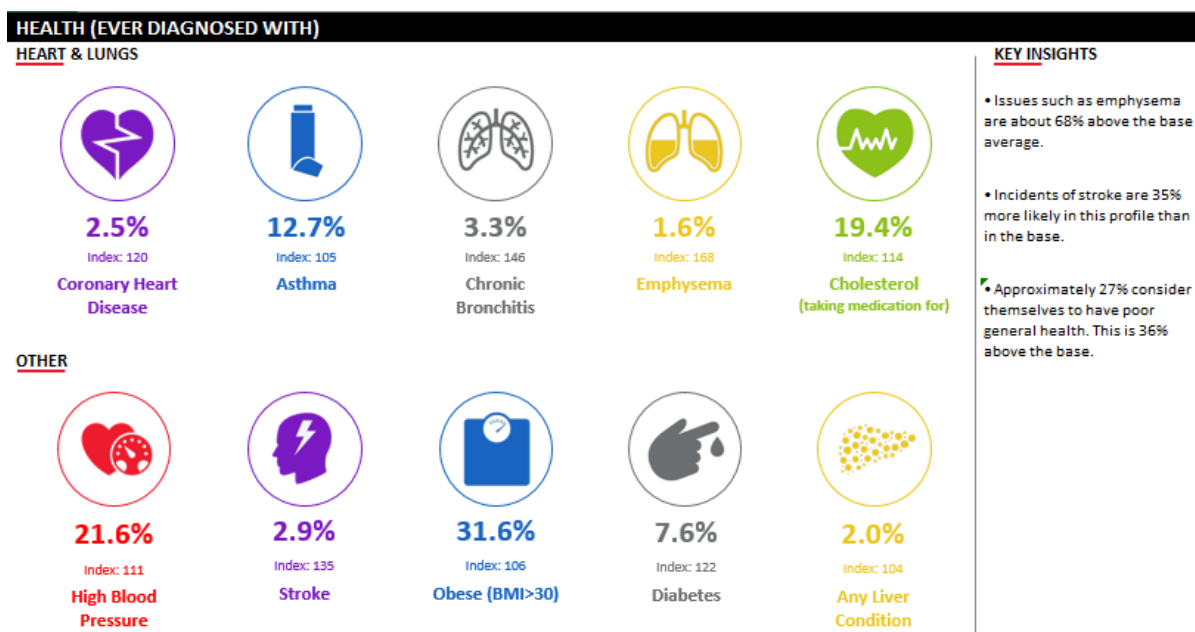
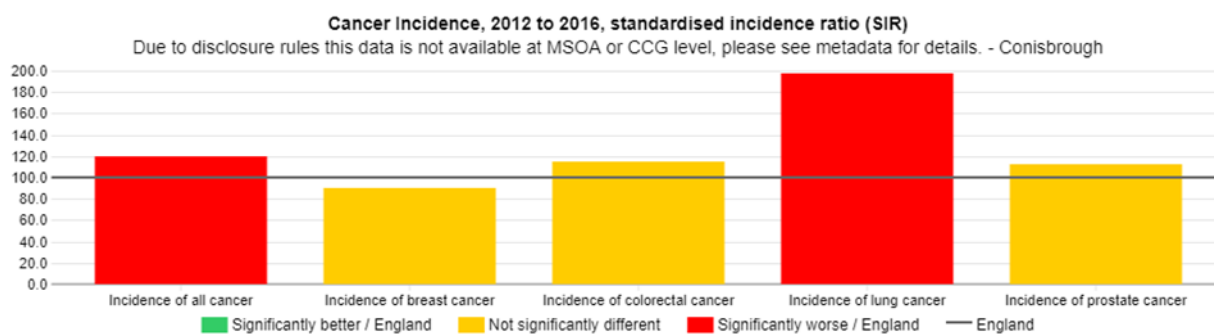


Figure 16. Health Condition ACORN Data, 2021

Incidence of Death

Denaby Main has a mortality ratio of 119.3 per 100.0 when using ISR compared to England for all types of cancer, which is significantly higher to the average of Doncaster (107.5 per 100) and the national average of 100 per 100.0 when analysed by type of cancer, Denaby Main is not significantly different in relation to the prevalence of breast, colorectal and prostate cancer. However, Denaby Main has a higher prevalence of lung cancer, with a ratio of 197 per 100 in comparison to Doncaster's ratio of 137 per 100 and the national ratio of 100 per 100.



Source: English cancer registration data from the National Cancer Registration and Analysis Services' Cancer Analysis System (AV2018 CASRFF01)

Figure 17. Cancer incidence, ONS, 2021

Whilst cancer prevalence in Denaby Main is considerably high, respiratory diseases are the main cause of death across all ages (153.7 per 100.0). Mortality rates from circulatory disease are also high (146.2 per 100.0), which can be linked to a greater prevalence of obesity and diabetes as previously outlined in Figure 16.

Deaths from causes considered preventable in those under 75yrs (157.4 per 100.0) are significantly higher than Doncaster (128.7 per 100.0).

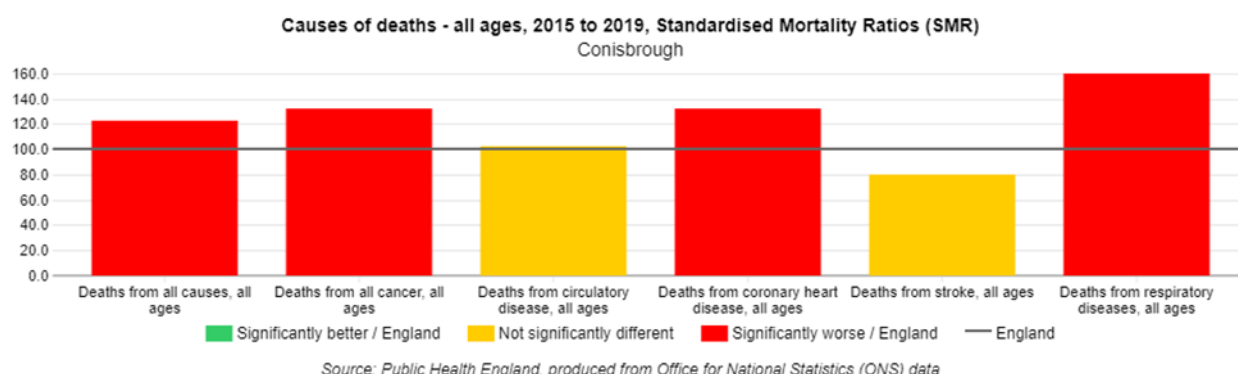


Figure 18. Mortality, ONS, 2021

Alcohol Intake

In the figure below, the data at LSOA level, shows disparities among communities in terms of alcohol-related hospital admissions. Notably, both Denaby Main & Old Denaby Main surpass the Doncaster rates of 43.68 per 1000 for such admissions. Of particular significance is Denaby Main, which ranks as the highest among all LSOAs in the South Locality with a rate of 104.79 per 1000.

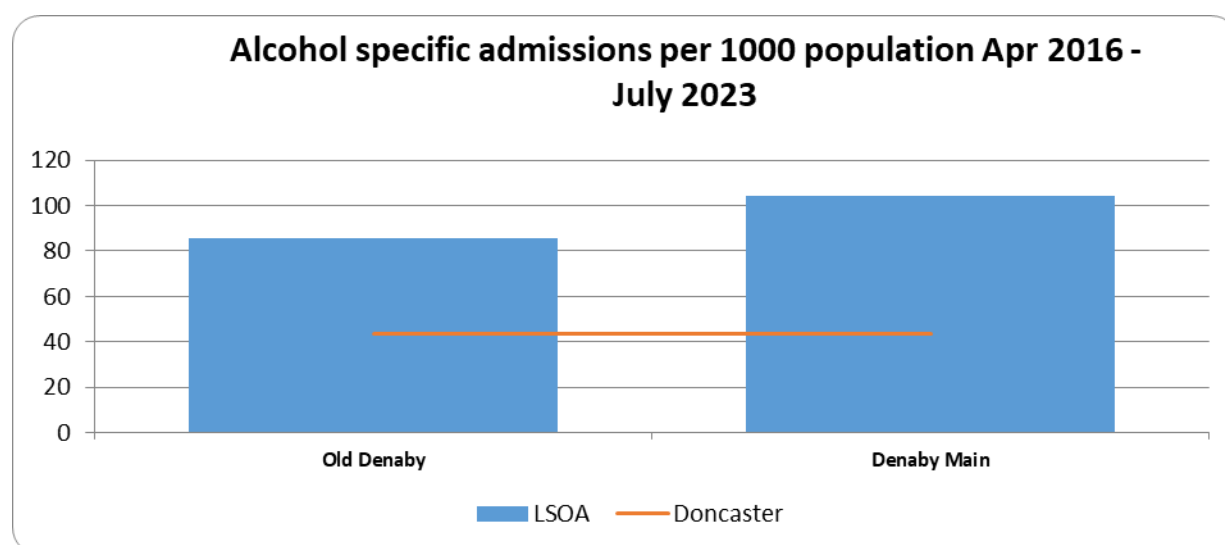


Figure 19. Alcohol Hospital Admissions per 1000 Population, ONS, 2016-2023

Smoking

Denaby Main has an estimated smoking prevalence of 29% in comparison to Doncaster (21%) and England (17.2%). Action on Smoking and Health (ASH) estimates smoking costs Doncaster £335 million per year, the combined cost of smoking-related medical treatment via hospital admission and primary care services is £16.5 million. Social care costs due to smoking amounts to an estimated £115 million annually in Doncaster with the majority being lost to informal care costs from friends and family (£64.3 million).

In Denaby Main, the gross annual cost of smoking as of Spring 2024 was £12 million and 12.1% of the ward's population are smokers. An estimated £3.75 million is spent annually on Tobacco products in Denaby Main and the national average spend on tobacco per smoker now stands at £2486. Smoking has a significant impact on employment and productivity, in Denaby Main the total cost due to lost productivity from smoking was estimated at £6.98 million which is higher than the borough average (£6.5M).

Loneliness and Isolation

Around 34.3% of older people (> 65-year-olds) live alone in Denaby Main, compared to 31% across Doncaster and England. The Conisbrough and Denaby Main ward has the highest percentage of residents aged over 65 living in social accommodation per area and population total. This highlights that most of this age group are living alone in social housing either through the Council's housing stock or residential/care homes. Whilst this does not indicate loneliness and/or isolation, it is an indicator that to be considered alongside local intelligence.

Loneliness and isolation are associated with mental health and wellbeing. There is currently work being undertaken to develop a more in depth understanding of the impact of Covid-19 on the mental health of residents in Denaby Main. Data captured before 2020 and shown in the figure below highlights the percentage of residents who had been diagnosed with clinical depression, as well as rates of other self-reported indicators of mental health and wellbeing.



Figure 20. Wellbeing ACORN Data, 2021

Childhood Development

A child's early experiences are vital in providing the foundations for children to develop healthily and happily. Children being born into deprivation and living amongst deprivation in their early years are more likely to experience a wide range of health problems, fall behind their peers and face employment problems in adult life. The quality of early experiences is important as children develop, providing opportunity for motor (physical), intellectual (language and communication), cognitive and socio-emotional development.

The Income Deprivation Affecting Children Index (IDACI) measures the proportion of all children aged 0 to 15 living in income deprived families. In Denaby Main 75% of

children are classed as living in child poverty, and 77.5% in Old Denaby, significantly higher than the Doncaster average.

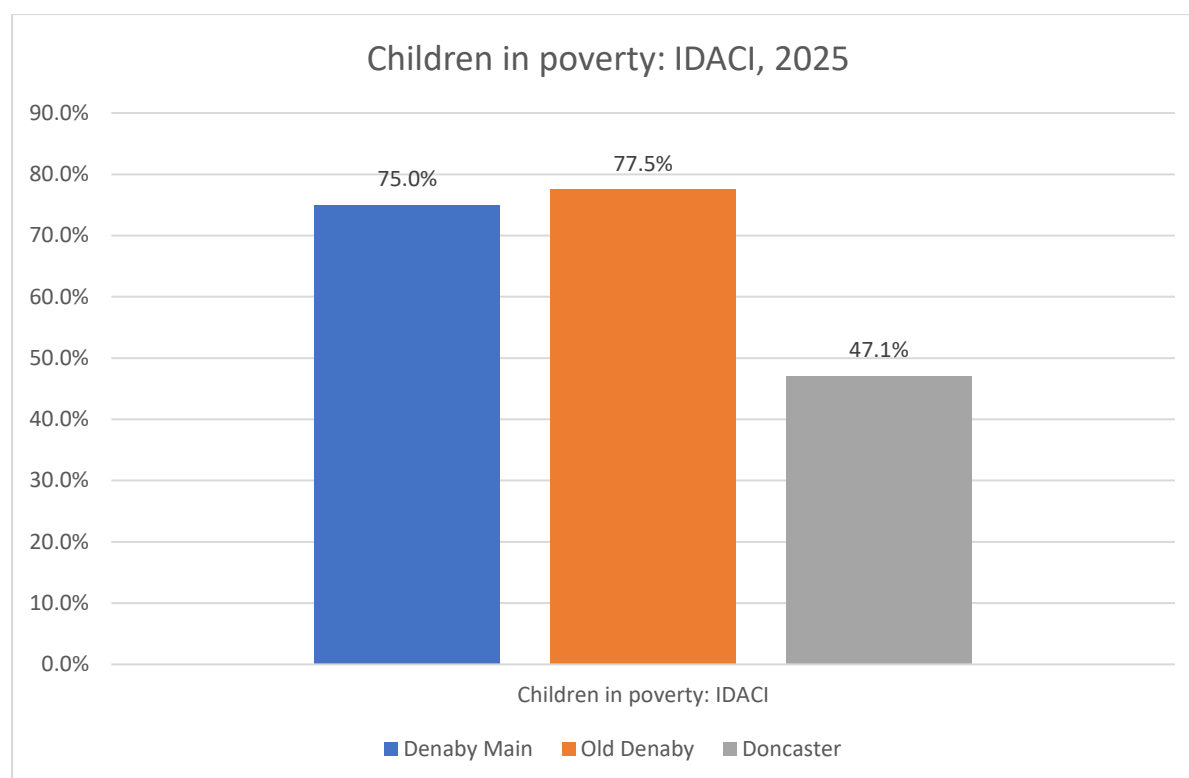


Figure 21. Children in Poverty: IDACI (aged 0 to 15), ONS, 2025

Childhood Obesity

Childhood obesity and inequality are closely connected. Children from families with less money often have fewer chances to eat healthy food or play outside safely. They might live in areas without parks or easy access to affordable fresh fruits and vegetables. These challenges make it harder for them to stay at a healthy weight. Because of this, childhood obesity is more common in deprived communities. Helping all children grow up healthy means making sure every family has access to good food, safe places to play, and support for healthy living.

Figure 21 below shows that 29.5% of children in the Conisbrough Ward are overweight or obese at reception age and 15.9% are obese or severely obese. This has increased from 21.3% and 10.6% respectively and is now higher than Doncaster, where 26.7% of reception-age children are overweight or obese and 12.1% are obese, and England, where the rates are 22.3% and 9.8%. By Year 6, the prevalence of overweight and obesity in Conisbrough rises to 47.9%, with 31.3% obese or severely obese, compared to Doncaster at 40.2% and 26.3%, and England at 36.2% and 22.3%. These figures show that Conisbrough rates are significantly above both local and national averages.

Period	Conisbrough North		Doncaster	England
		Count	Value	
2008/09 - 10/11	●	-	25.6%	25.7%
2009/10 - 11/12	●	-	28.3%	25.0%
2010/11 - 12/13	●	-	28.9%	23.9%
2011/12 - 13/14	●	-	28.0%	23.2%
2012/13 - 14/15	●	-	26.5%	22.7%
2013/14 - 15/16	●	-	22.0%	23.2%
2014/15 - 16/17	●	-	22.4%	23.0%
2015/16 - 17/18	●	-	27.5%	23.8%
2016/17 - 18/19	●	-	31.9%	24.3%
2017/18 - 19/20	●	-	27.1%	25.5%
2018/19 - 20/21		-	*	*
2019/20 - 21/22	●	-	21.7%	26.1%
2020/21 - 22/23	●	-	21.3%	26.0%
2021/22 - 23/24	●	-	28.9%	25.8%

Source: NHS England, National Child Measurement Programme

Figure 22. Reception Age Obese and Overweight Children, National Child Measurement Programme, 23-24

Childhood Smoking

In the Conisbrough Ward the prevalence of regular smokers at age 15 (5.4%) is like Doncaster (6.8%) and England (5.4%) and the deliveries to teenage mothers (1.8%) are significantly higher than Doncaster (1.1%) and England (0.7%). Furthermore, the general fertility rate, which is live births per 100.0 women aged 15-44 (62.2) is similar to Doncaster (62.4) and England (59.2). These figures are all the same as reported in 2021.

Pupil Lifestyle Survey

The Pupil Lifestyle Survey is conducted by City of Doncaster Council (CDC) to provide valuable data on children and young people's health-related behaviour, through an anonymous school-based questionnaire. Data from the survey has provided a set of Doncaster-wide figures at key points in children and young people's development; KS2, 3 and 4. This profile will compare the previous 2020 data with that collected most recently in 2022.

In the Conisbrough Ward 285 pupils participated. 84% of participants have breakfast, this is lower than Doncaster (86%) and the same as 2021. The survey also indicated that 17% of school-aged children have free school meals, this is similar to Doncaster (19%) and the same as 2021. 15% claimed to consume takeaway food most or every day the same as Doncaster. However, daily fruit consumption is 61%, lower than Doncaster (68%).

95% of children reported they feel warm and comfortable at home which is lower than Doncaster (97%). 93% felt able to clean themselves at home, higher than Doncaster (90%). 73% of children enjoy physical activity, lower than Doncaster (79%) and 30% have reported being bullied in the last 12 months, higher than Doncaster (27%) and

21% have deliberately hurt someone in the last 12 months, higher than Doncaster (16%).

90% of Children reported that they felt safe at home which matches Doncaster and 84% have a nice, safe place at home or near home to play (Doncaster 85%). 61% of school children reported that they feel able to get involved in the wider community, lower than Doncaster (62%). It is important to note that the Pupil Lifestyle Survey is self-reported and was not completed by all the schools.

Education

In Denaby Main 16 pupils have been recorded as receiving Elective Home Education and 7 children in the ward recorded as missing education in Denaby Main.

At Key Stage 2 (KS2), each pupil is assessed in reading, writing and maths. In 2024, 52% of pupils from Denaby Main achieved the expected standard in reading, writing, and mathematics at key stage 2, which is a significant increase from 38% in 2023. It was slightly lower compared to Doncaster as a whole, of which 59% of students achieving the expected standards.

At Key Stage 4 (KS4), each pupil is given an Attainment 8 score (a score out of 90) based on their 8 best GCSE grades including English, maths and at least 3 other traditional academic GCSEs (sciences, languages, and humanities). Other qualifications at an equivalent level (e.g. BTECs) can also count towards the score. In 2024, average GCSE attainment 8 score per pupil (out of 90) was 41.3 in Denaby Main (60 pupils) which is lower compared to Doncaster at 44. This was higher in comparison to the 2023 score of 36.7.

	KS2 Expected 2022	GCSE Expected 2022	KS2 Expected 2023	GCSE Expected 2023	KS2 Expected 2024	GCSE Expected 2024
National	59%	49%	60%	46%	61%	46%
Doncaster	56%	45%	55%	44%	59%	44%
Denaby Main	44%	40%	38%	37%	52%	41%

Table 2. Key Stage 2 and 4 Attainment Scores 2022-2024, Department of Education, 2025

Pupil Lifestyle Survey

The Pupil Lifestyle Survey is conducted by City of Doncaster Council to provide valuable data on children and young people's health-related behaviour, through an anonymous school-based questionnaire. Data from the survey has provided a set of Doncaster-wide figures at key points in children and young people's development (KS2, 3 and 4), and this analysis compares the Conisbrough ward to Doncaster overall.

In the Conisbrough ward, 133 pupils participated in 2023/24. Breakfast habits have remained consistent across all three years, with 87% of pupils reporting they eat

breakfast daily in 2022, 2023, and 2024. This is slightly higher than the Doncaster-wide figure, which has remained stable at 86% across the same period. School meal uptake in Conisbrough has also been unchanged, with only 36 percent of pupils having school dinners in 2022, 2023, and 2024. This is significantly lower than Doncaster overall, which dropped from 55% in 2022 to 52 % in both 2023 and 2024.

Eligibility for free school meals in Conisbrough has remained at 17% across the three years, consistently below the Doncaster-wide figures of 19 % in 2022, 18 % in 2023, and 19 % in 2024. Dental health engagement shows a clear gap: only 34 % of Conisbrough pupils reported visiting a dentist in the last 12 months in 2022, 2023, and 2024, compared to Doncaster-wide figures that rose from 45 % in 2022 to 49 % in 2023 and 51% in 2024.

School absence data was only collected in 2024, when 55 % of Conisbrough pupils reported having days off in the last year. This closely mirrors the Doncaster-wide figure of 56 %.

Overall, Conisbrough's figures have remained remarkably stable across 2022 to 2024. Pupils consistently eat breakfast at slightly higher rates than the Doncaster average, but uptake of school meals and dental visits is much lower. Free school meal eligibility is slightly below average, while absence rates in 2024 align closely with Doncaster overall. These entrenched patterns suggest that while some behaviours are positive, such as breakfast consumption, challenges remain around nutrition and access to dental care.

Family Hubs

Family Hubs are local, community based, centres that offer integrated services for families from the early stages of life covering conception and early childhood up to adolescence, and up to age 25 for individuals with special educational needs and disabilities (SEND). Family Hubs offer early years and parental support including antenatal and postnatal care, baby and toddler classes, infant feeding, parenting programmes, SEND pathways and specialist support for mental health, domestic abuse, welfare and substance misuse. Family Hubs provide welcoming community spaces for families, bringing together education, health, social care, and wellbeing services in one facility and cater for a broad spectrum of needs. There are twelve Family Hubs across Doncaster, with three located in the South locality including Denaby, Mexborough and Rossington.

Membership data shows the percentage of eligible children signed up to Family Hubs. In Q4 of fiscal year 2024-2025 Denaby Main Family Hub membership was 64% for children aged 0-8 weeks, 87% for 0-1 year and 11-month-old children and 101% for children aged between 0-4 years and 11 months. Denaby Main had a higher rate of membership than some other communities in the south locality and does have a family hub located there. Overall membership for South is 92%.

Access data includes the percentage of children using Family Hubs services once or twice and engagement figures indicate the number of children seen three or more times. Engagement is higher in Denaby Main compared to other wards, especially at age 0-1 years and 11 months (37%). Engagement is also lower than other communities in South, (48%) however this figure is still low. There are several factors that could contribute to membership, access and engagement figures which must be considered when interpreting data. A complex relationship exists between socioeconomic, cultural, education, deprivation and independence as well as other factors and indicators which can influence these rates. Data across all recorded age groups is available in the table below.

	0-8 weeks	0-1 year and 11 months	0-4 years and 11 months
Membership	64%	87%	101%
Access	NA	68%	89%
Engagement	NA	48%	80%

Table 3. Denaby Main Family Hub Data Q4, 2024-25, City of Doncaster Council, 2025

	South Family Hubs
Membership	92%
Access	80%
Engagement	68%

Table 4. South Locality Family Hub Data, City of Doncaster Council, 2025

Family Hubs facilitate 2-Year-Old Funding Entitlement for families which provides up to 15 hours of free early education or childcare per week for 38 weeks of the year. 64% of eligible children in Doncaster have taken up 2-year-old funding, this figure has dropped each term over the last year in all localities with the biggest decrease in Central and South localities. For summer late starters in 2025 2-year-old funding uptake is higher in Denaby Main (67.9%) compared with Doncaster (64%).

Physical Activity:

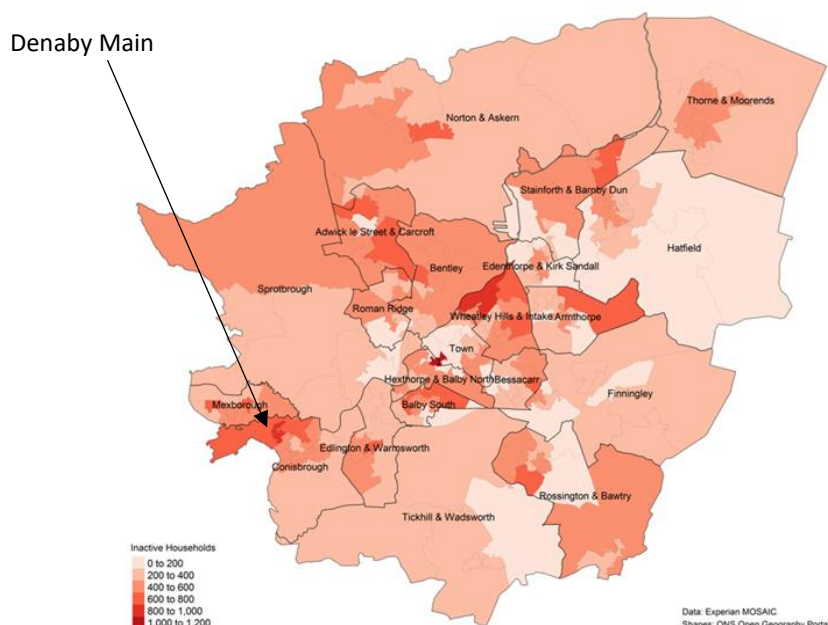


Figure 23. Doncaster Physical Activity Levels, Get Doncaster Moving, 2023

Most of the information in this section is taken from Mosaic data, and more information about Mosaic can be found in the appendix. Levels of physical activity in Denaby Main are low compared to the rest of the borough. This can be seen in the map below which identifies areas with the highest number of inactive households:

Physical Activity Children and Young People

Data from the 2024 Pupil Lifestyle Survey shows that 29% of participating Conisbrough and Denaby Main students walk to school, compared to Doncaster at 39%. 96% of Conisbrough and Denaby Main students in have done physical activity in the last 7 days, compared to 97% of students in Doncaster. 8% of students in Conisbrough and Denaby Main do physical activity via afterschool club, compared to 18% in Doncaster.

This data has been matched to the number of children and young people living in deprived and inactive households. The former data positions Denaby Main as an area of focus and priority for the Get Doncaster Moving Strategy. The table below shows the number of households in the priority areas of inactive, low incomes and households with children and young people:

Name	Inactive	Low Incomes	C&YP	Total
Adwick le Street	883	877	920	2680
Denaby	951	913	514	2378
Wheatley Park & Wheatley Hills	802	885	667	2354
Bentley	883	692	773	2348
Edlington	667	858	726	2251
New Rossington	673	823	749	2245
Intake	651	781	668	2100
Skellow & Carcroft	594	892	563	2049
Stainforth	618	738	676	2032
Thorne	747	817	367	1931

Table 5. Get Doncaster Moving Survey Results 2024-25, Get Doncaster Moving, 2025

The low levels of physical activity can be linked to the obesity levels within the area. According to the Quality of Outcomes Framework (QOF), a system for the performance management of GPs NHS, Denaby Main Medical Practice, in the heart of Denaby Main, patients have an obesity Quality Outcome Framework prevalence (18+) of 18.1% in comparison to the national average of 9.8% and the Doncaster CCG average of 14%.

Sheffield Hallam University were commissioned by Get Doncaster Moving to gather data on and provide an analysis and evaluation of the current levels of physical activity in the community. A face-to-face household survey was completed in 2018 and collated in 2019 by 1,120 respondents across Doncaster. The questionnaire was designed to (i) assess levels of physical activity in accordance with Sport England classifications, (ii) explore key issues around engagement in physical activity utilising the robust COM-B behavioural science approach (Michie et al., 2011). 130 responses were collected from different households. The mean amount of time adults reported being active each week was 177 minutes, which was fourth highest out of the eight communities. The physical activity classifications for Denaby Main are presented below:

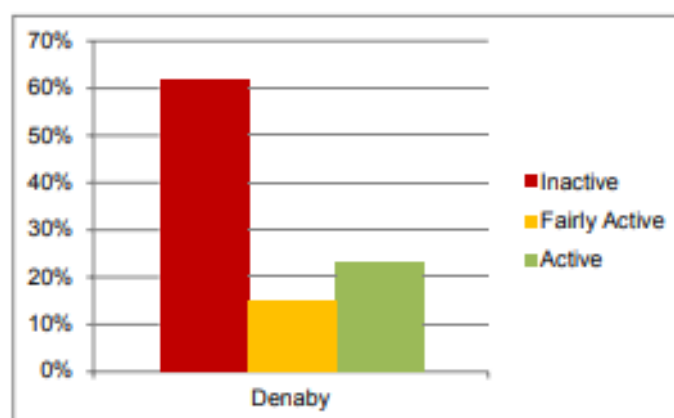


Figure 24. Physical Activity Classification, Get Doncaster Moving, 2019

Sedentary Behaviour

In Denaby Main the mean reported sitting time for participants was 192 minutes on a working day. On a non-working day, it was 444 minutes which was the highest level of sedentary behaviour out of the eight communities. In Denaby Main 20 participants

reported being employed or in education, 7 of those participants reported active travel to their place of work or study. This involves either walking or cycling short journeys, or portions of their journey to their place of work or study, whilst leaving cars at home. The mean time spent active travelling each day was 12 minutes a day, which accounted for 54% of their commute.

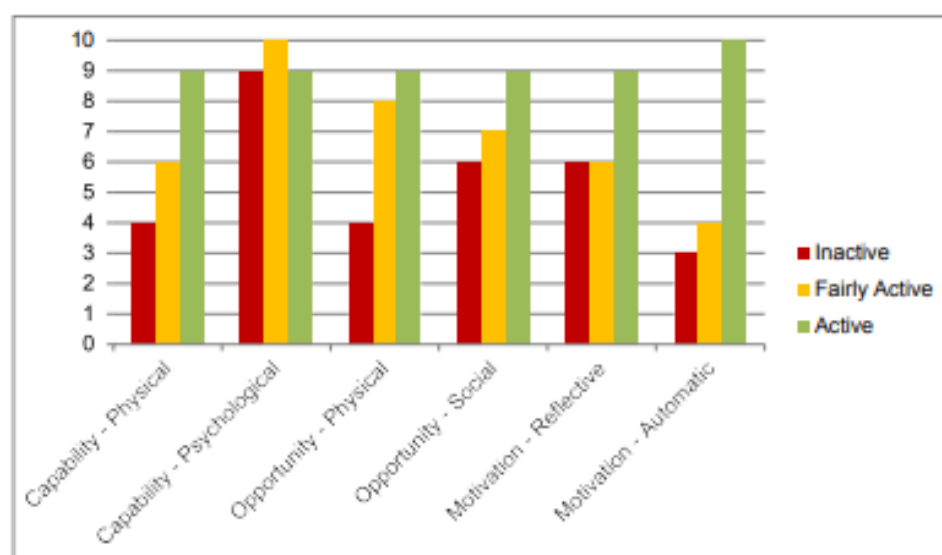


Figure 25. COM Scores per Percentage for Physical Activity Classification, Get Doncaster Moving, 2019

16 households reported having young people and the mean reported physical activity time outside of school was 37 minutes a week. This was the second lowest amount of young people' activity over the eight communities COM-B results presents the Capability, Opportunity, and Motivation scores for participants based on the physical activity classification they are in. In Denaby Main participants who are already active rated their capability, opportunity and motivation as being higher than those who were fairly active and inactive. Participants in Denaby Main who were inactive gave particularly low ratings to automatic motivation, indicating that they did not have habits or routines for physical activity). Low rating to physical opportunity, indicating that they perceived having less time and fewer resources to be active and physical capability, indicating that they perceived fewer skills and/or less stamina to be physically active. These might be areas to focus on in terms of future interventions.

Green Spaces & Parks

There is increasing evidence that access to green space is associated with better health outcomes and that income-related inequality in health is less pronounced where people have access to greenspace. Denaby Main has access to greenspace at the south of the area that is between Denaby Main and Conisbrough.



Figure 26. Green space in Denaby, Ger Doncaster Moving, 2025

The Craggs has been named as one of the Future Parks which is a £1.8m investment from Sport England which has been launched to maximise opportunities from the Local Delivery Pilot (LDP) to enhance green spaces in Doncaster. More information on the LDP can be found in the appendix. The area is also part of the Dearne Valley Green Heart, one of 12 Nature Improvement Areas in England. This project aims to create a healthy and attractive natural environment, which will support the development of a growing green economy and help flourish local communities. More information on the Dearne Valley Green Heart can be found in the appendix. As well as ensuring that there is access to green space, Doncaster Council has also declared Air Quality Management Areas (AQMAs). Further links can be found in the appendix.

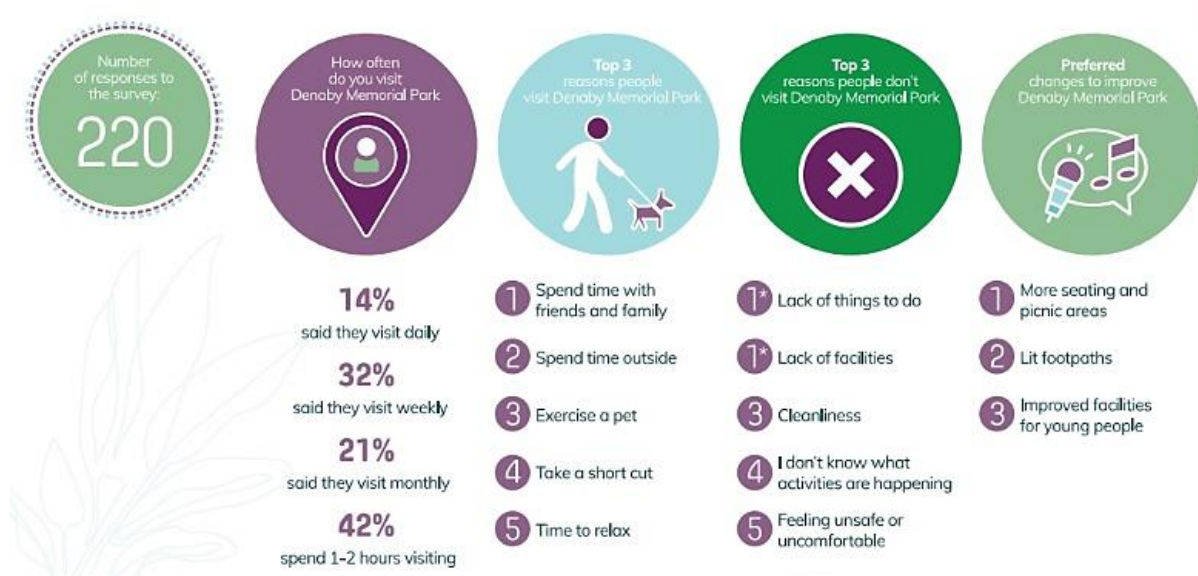


Figure 27. Get Doncaster Moving Future Parks Survey Results, Get Doncaster Moving, 2024

In 2024 Denaby Main Memorial Park became a Sport England Future Park, and community engagement began with residents to discover what they wanted the park's future to look like. 67% of residents in Denaby Main visit the park once a month or more, and reasons for visiting included spending time with friends and family, exercising a pet and spending time outside

The Craggs has been named as one of the Future Parks which is a £1.8m investment from Sport England which has been launched to maximise opportunities from the Local Delivery Pilot (LDP) to enhance green spaces in Doncaster.

A survey by Get Doncaster Moving in 2021 asked residents about the Craggs, with 154 responses. Residents identified popular usage of the Craggs as including being as short cut route, exercising a pet for relaxation, and was most popularly identified being used for undertaking physical activity.

5. Why do you visit the Craggs? Choose as many that are applicable

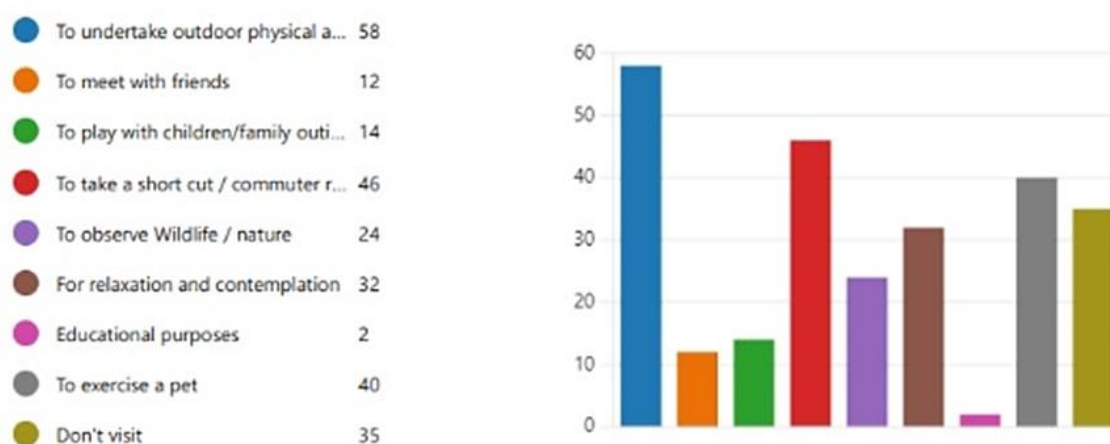


Figure 28. Future Parks Survey Responses City of Doncaster Council, 2024

Work has already taken place to open sightlines on The Craggs to help people feel safer. In 2023, improvements to entrances, enhanced walking routes and new signage and seating have all taken place. There is also an audio trail available to access on site - which can be accessed online here: [Craggs audio guides](#). In addition to the Future Parks funding, a further £200,000 worth of investment is set to improve several of the footpaths across the site from active travel funding.



Figure 29. Improvements to The Craggs, Get Doncaster Moving, 2024



Community Information:

Population

Denaby Main has a population of 4,601 residents, of which 2,312 (50.2%) are of working age (25–64 years). This figure is slightly lower than the England average but in line with Doncaster overall. The community's age composition broadly reflects national patterns; however, Denaby Main has a slightly older population than the England average. The area remains predominantly White, with 92.5% of residents identifying as White compared to 93.1% in Doncaster and 81.0% nationally. Ethnic diversity is limited, with only 7.5% of residents from other ethnic groups, higher than Doncaster (6.9%) but lower than England (19%).

Ethnic Group	Denaby Main	Doncaster	England
Asian	3.7%	2.9%	9.6%
Black	0.9%	1.2%	4.2%
Mixed / Multiple	2.1%	1.5%	3.0%
White	92.5%	93.1%	81.0%
Other	0.8%	1.2%	2.2%

Table 6: Ethnic Groups in Denaby Main, ONS, 2021

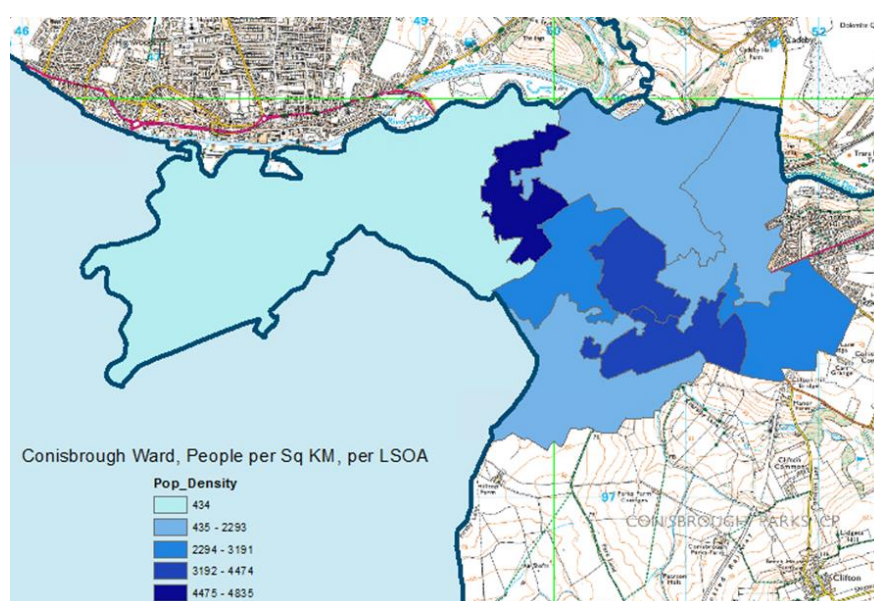


Figure 30. LSOA Population per Square Metre, ONS, 2023

Housing

Housing conditions and the surrounding environment can have profound impacts upon residents' health and exacerbate health inequalities.

Housing in Denaby Main and Old Denaby is dominated by socially rented properties, which account for 52.8% of households, compared to 17.0% in Doncaster and 17.1% nationally, while owner-occupied homes make up 33%, far below Doncaster (63.2%)

and England (62.6%). Private rentals represent 14.2%, similar to local and national averages. The housing stock is primarily terraced and semi-detached, reflecting the area's high-density profile, and although overcrowding is relatively low at 2.8% (Doncaster 2.5%, England 4.3%), the high proportion of social housing and rising rent arrears highlight financial vulnerability and links to fuel poverty.

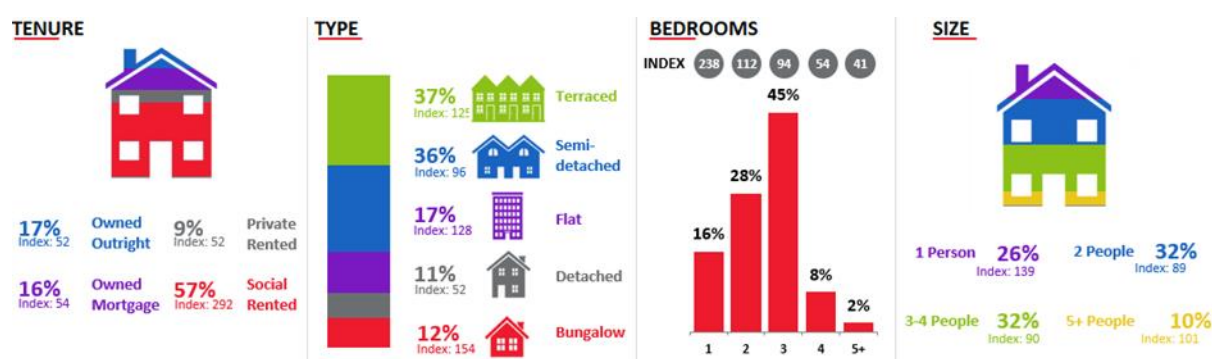


Figure 30. ACORN Data for Housing, 2021

St Leger Homes provide housing services across Doncaster. They manage over 21,000 properties owned by the CDC across the City. High levels of social housing, with a large proportion of bungalows and terraced housing are an indicator of deprivation and associated with overcrowding, low income and can consequently affect poor levels of childhood development. The high number of St Leger homes can be seen in table 7. The total debt of socially rented houses in Denaby Main is slowly rising and can be seen in figure 30.

Type of House	Total number
Bungalows	584
Flats	81
Maisonette	36
Houses	417
Total	1118

Table 7. St Leger Homes Housing Stock, Denaby Main, St Leger Homes, 2025

Rent Arrears 21/22	Rent Arrears 22/23	Rent Arrears 23/24	Rent Arrears 24/25
£127139	£132285	£129616	£141080

Figure 31. Denaby Main Rent Arrears, St Leger Homes, 2025

Community Safety:

Community safety remains a top priority for residents and stakeholders across Doncaster. Feedback from a range of engagement activities consistently highlights concerns around anti-social behaviour (ASB), crime, and perceptions of safety. People want cleaner, more vibrant and welcoming neighbourhoods, supported by effective policing, youth engagement, and thoughtful environmental design.

To help achieve this, we're committed to a city-wide approach that combines proactive and reactive measures through a layered crime prevention strategy—primary, secondary, and tertiary—designed to make every community safer.

If you'd like to stay informed or take action, you can find detailed crime statistics for your neighbourhood at www.police.uk. To report issues or concerns, visit www.yourlifedoncaster.co.uk/safer-city-how-to-report-issues.

The Safer Stronger Doncaster Partnership:

The Safer Stronger Doncaster Partnership is working together to make Doncaster a safer, stronger place for everyone. The partnership focuses on six key priorities that tackle issues affecting our communities:

- **Reducing anti-social behaviour (ASB)** – making our streets and public spaces welcoming for all.
- **Reducing crime and re-offending** – supporting people to make positive choices and preventing repeat offences
- **Tackling serious and organised crime** – protecting our communities from organised criminality and criminal networks
- **Reducing substance and alcohol misuse** – helping people access support and reducing harm
- **Tackling domestic and sexual abuse** – ensuring victims get the help they need and holding perpetrators to account
- **Reducing violence and violent crime** – creating safer neighbourhoods for families and young people

Together, these priorities aim to build a Doncaster where everyone feels safe and supported.

Community Voice / Key Safety Concerns

Residents in Denaby Main told us they are worried about persistent anti-social behaviour and crime, which they feel is affecting daily life. People spoke about intimidation, vandalism, and visible drug activity, alongside concerns about gangs and repeat offending. Older residents in particular said they often feel unsafe or intimidated. Poorly maintained public spaces and environmental issues add to these concerns, and many said they want more visible policing and quicker responses to incidents. Fear of reporting crime is common, with some residents believing nothing will change or fearing retaliation. There's also a call for more youth activities and safe spaces to reduce disruption and give young people positive options. Overall, the

community wants cleaner streets, stronger enforcement, and opportunities to bring people together and restore pride in Denaby Main.

Anti-Social Behaviour

Anti-social behaviour can be defined as when someone acts in a way that causes trouble, fear, or upset to others. This can include things like being noisy late at night, vandalism, or being aggressive in public. Hate crime is when someone is hurt or targeted because of their race, religion, disability, gender identity, or sexuality. It's not just a crime against one person—it can make whole communities feel unsafe.

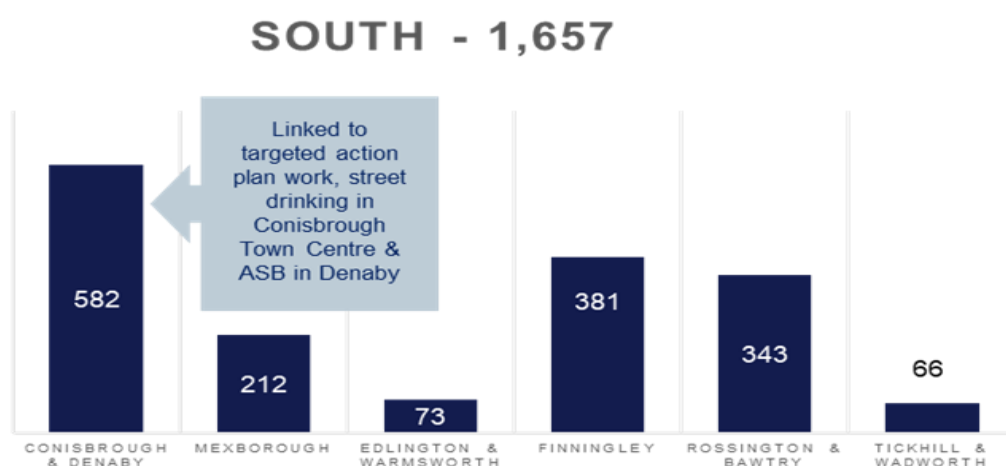


Figure 32. South Locality ASB/Early Intervention and Prevention Case Breakdown, City of Doncaster Council, 2024

With regards to vulnerable victims, there were 8 cases to be addressed, none of which were in the Conisbrough ward. It should be noted that the relatively high figures reported in this ward are not necessarily a good or bad thing, inflated rates can be the result of door to door engagement through community impact surveys highlighting repeat ASB incidents, equally the low number of vulnerable victim support may be due to cases no longer being treated as such and closed, or moving onto stronger families or wellbeing cases.

Wellbeing Service

This is one of the services run by CDC and the service supports residents with financial support, physical health, housing, mental health and social isolation and an early intervention to prevent moving to adult social care services. The list below shows the most common themes residents are accessing the Wellbeing Service for support for Conisbrough & Denaby Main for 2024-2025:

1. Financial
2. Housing & Living Environment
3. Physical Health

Community Investment

Across the South locality a total of £821,780 was awarded to community groups through the Community Wealth Builder arm of Well Doncaster. Of that, £84,690 has been invested in the Conisbrough and Denaby Main ward primarily to increase the sense of community spirit and to revitalise under-used assets for the benefit of the community.

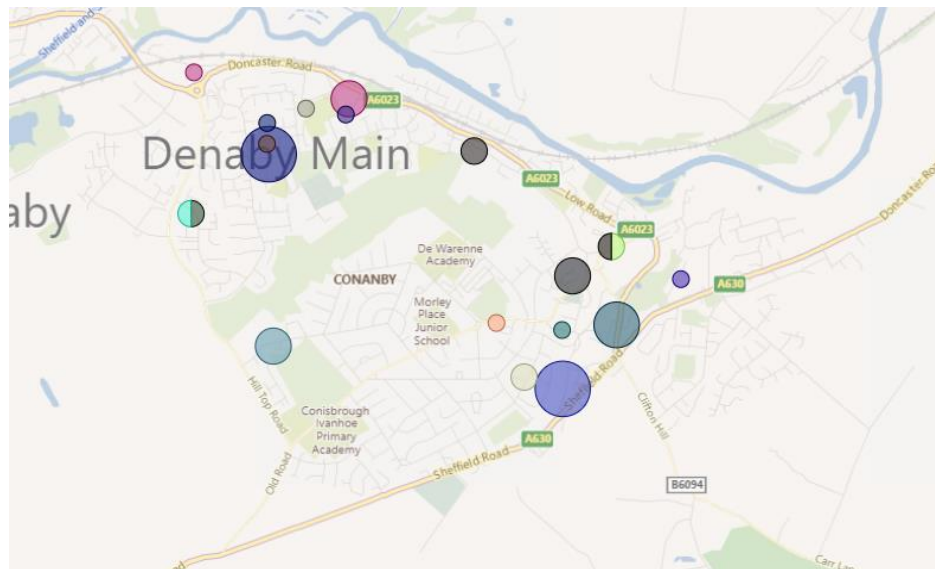


Figure 33. Denaby Main Investment Map, Doncaster Delivering Together, 2025



References

Armstrong, A.J., Holmes, C.M. and Henning, D., 2020. A changing world, again. How Appreciative Inquiry can guide our growth. *Social Sciences & Humanities Open*, 2(1), p.100038.

Ritchie, J., Spencer, L., O'Connor, W., & Lewis, J. (2003). Carrying out qualitative analysis. *London: Sage*

Appendix

Well Doncaster

More information about Well Doncaster can be found on our website: [Home | Well Doncaster](#)

Census 2021

The census is undertaken by the Office for National Statistics every 10 years and gives us a picture of all the people and households in England and Wales.

[Build a custom area profile - Census 2021, ONS](#)

[Census Maps - Census 2021 data interactive, ONS](#)

Public Health Data

Fingertips

This is a new fingertips profile that uses data from Local Health an existing PHE data tool. Local Health is a collection of quality assured health information presented for small geographical areas. By presenting data for small areas, Local Health provides evidence of inequalities within local areas. It supports targeted interventions to reduce such inequalities.

Local Health contains indicators related to:

- Population and demographic factors
- Wider determinants of health
- Health outcomes

It presents data for middle super output areas (MSOA), electoral wards, clinical commissioning groups (CCG), local authorities, and England as a whole.

Please note, as the Local Health tool was designed to allow users to map small area data, a mapping option has not been provided in this profile.

<https://fingertips.phe.org.uk/profile/local-health/data#page/0>

[Local Health - Public Health England - Reports: get a dashboard on a custom area](#)

Link to data- [Fingertips | Department of Health and Social Care](#)

Life expectancy and healthy life expectancy by ward: [Life expectancy by census ward](#)

Indices of Multiple Deprivation 2025 – statistical release, data files and reports: [English indices of deprivation 2025 - GOV.UK](#)

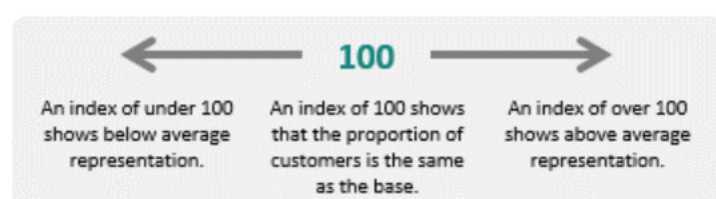
Acorn profiles

Wellbeing Acorn segments the population into 4 groups (Health Challenges; At Risk; Caution; Healthy) and 25 types describing the health and wellbeing attributes of each postcode across the country. By analysing significant social and health related behaviour, it provides precise information and an in depth understanding of upstream issues affected by current lifestyle traits

INTERPRETING THE REPORT

The Wellbeing Acorn profile report helps you understand the underlying demographics, lifestyle and health attributes of your customers and service users by comparing their Wellbeing Acorn profile to a base (e.g. UK population, area or other customer groups).

INDEX



The Wellbeing Acorn Profile contains 12 variables that are indicators of Disability or Infirmary in the population and 9 variables related to unhealthy Behaviours. The average score measured against the base profile of Yorkshire and the Humber is 100. A value above 100 indicates that the area population is overrepresented for this characteristic, below 100 the value is less than the average or underrepresented.

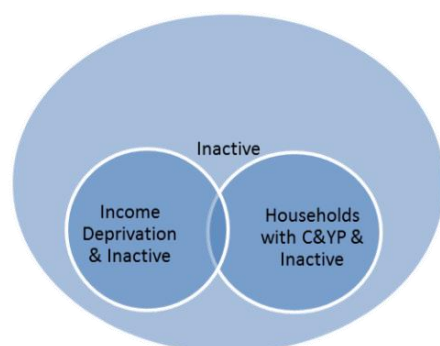
Physical Activity

Get Doncaster Moving survey: <https://getdoncastermoving.org/uploads/behavioural-insight-phase-one-summary-report.pdf?v=1644581925>

Mosaic data

Mosaic Public Sector classifies the UK population into one of 66 types and 15 groups through a detailed and accurate understanding of each citizen's demographics, lifestyles, behaviours and location.

The Physically Inactive Population of Doncaster



The MOSAIC types who “Do not exercise” and “Do not take part in Sport” were searched and three priority groups have been identified through work with strategic partners as part of the development of Doncaster’s Physical Activity Strategy. The three priority groups are:

- The Inactive
- Families with children and young people
- People living in income deprivation

These groups are cross-referenced against the inactivity list allowing for the identification of MOSAIC types which are both likely to be inactive and living in deprivation as well as inactive and from households with children and young people.

Link to the Get Doncaster Moving strategy; [Let's Get Moving! | Get Doncaster Moving](#)

Pupil Lifestyle Survey

[Pupil Lifestyle Survey - Healthy Schools \(healthylearningdoncaster.co.uk\)](#)

Power BI – Joint Strategic Needs Assessment

The Joint Strategic Needs Assessment (JSNA) is a process that identifies the current and future health and wellbeing needs of a local population. The dashboards show information about the employment, health, and wellbeing of people in Doncaster. We use this information to inform our policies and strategies to improve the lives of everyone in the Doncaster area.

[Joint Strategic Needs Assessments - Team Doncaster](#)

Community Safety

The Safer Stronger Doncaster Partnership Community Safety Strategy can be found at - [The Safer Stronger Doncaster Partnership - City of Doncaster Council](#)

If you'd like to stay informed about crime and ASB in your community, you can find detailed crime statistics for your neighbourhood at www.police.uk.

If you would like further information about making Doncaster a Safer City please see - [Making Doncaster a Safer City - YourLifeDoncaster](#)

To report issues or concerns, visit www.yourlifedoncaster.co.uk/safer-city-how-to-report-issues

Community Investment:

Investment Map: [Doncaster Delivering Together Investment Plan - Team Doncaster](#)

Interactive Map

To access and identify assets at ward and locality level please use the following interactive map: <https://www.google.co.uk/maps/d/viewer?mid=17BayPsljI1OUq6U4OFbk9FKLYL2-wDZN&ll=53.50909620569456%2C-1.13650280000000032&z=14>