



# Edenthorpe

## Community Profile

**Well Doncaster**

**Community Led Health and Wealth**

Empowering people in Doncaster to live better, healthier, and happier lives.

[www.welldoncaster.uk](http://www.welldoncaster.uk)

Well Doncaster  
**Community  
Wealth Builder**

Well Doncaster  
**Be Well**



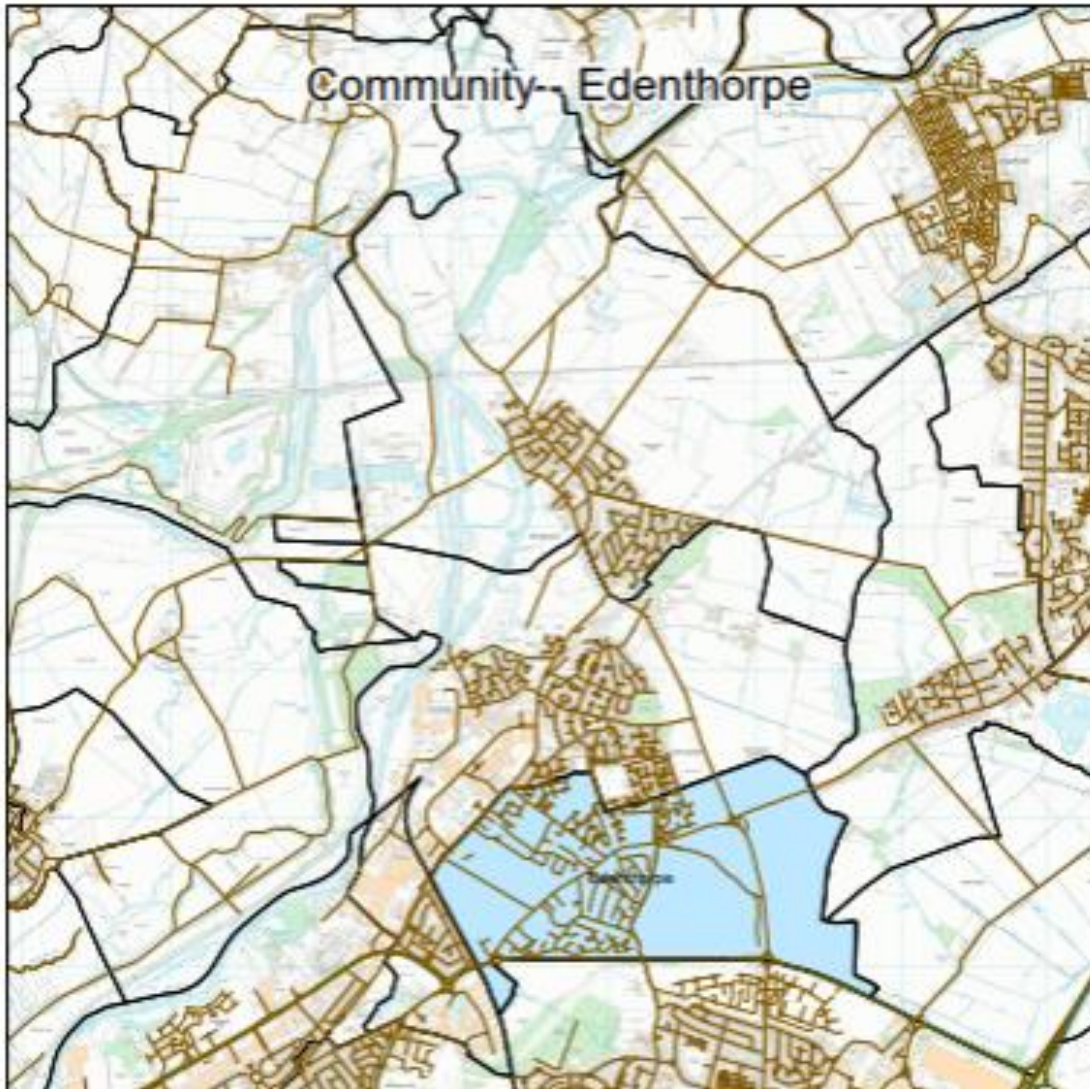
**City of  
Doncaster  
Council**

## This Report

This report uses a population health management approach to looking at the health of a whole group of people such as a town, neighbourhood, or community instead of just focusing on one person at a time. It is designed to help community leaders, services, residents etc. understand the strengths of both people and place, whilst also looking into what health challenges are common in that group, what services are needed most, and where help is lacking. By using data and trends, this Community Profile can inform tailored ways to keep people healthy, prevent illness, and make sure everyone gets the care they need. By focusing on prevention, early intervention, and coordinated care, together we can build healthier communities and support long-term, sustainable improvements in public health. The first Community Profile was written in 2023 and has been refreshed in 2025 to reflect the current opportunities and challenges of the community.

This report focuses on the community of Edenthorpe, part of Edenthorpe and Kirk Sandal ward in the East of the City and begins with a summary outlining key information and priorities. This document builds on the initial conversations with communities, including ward members, community organisations, faith groups, residents and other organisations who work in the area. Communities' knowledge of their own areas enables them to identify their strengths and the assets on which they can build on. This document is shared with the intention of supporting those conversations and sharing information that might not be readily available to local people.

To ensure each community is represented as accurately as possible, where possible, separate data and illustrations have been used to represent Edenthorpe community. Data that is only available at ward level will be stated when included. Indirectly Standardised Ratios (ISRs) have been used throughout this document and have been used to compare data at community and ward level, against a reference population. ISRs show how often an event (such as deaths or hospital admissions) occurs in a population compared to what would be expected in a reference population, after adjusting for age differences. England is used as the reference population for ISR's throughout the document.



## Contents

<b>This Report</b>	<b>2</b>
<b>One Page Summary</b>	<b>7</b>
<b>Key priorities</b>	<b>7</b>
<b>Assets</b>	<b>8</b>
Assets Maps	8
Population Health Management	10
Assets in the Community	11
<b>Community Insight</b>	<b>12</b>
Appreciative Inquiry	12
Ward Members	15
<b>Health and Wealth</b>	<b>16</b>
Deprivation	16
Wealth Inequalities	17
Employment	19
Food Poverty	20
The Bread-and-Butter Thing	20
Fuel poverty	21
Citizen's Advice Doncaster Borough	22
<b>Health Inequalities</b>	<b>23</b>
Life Expectancy	23
Long-Term Health Conditions	24
Incidence of Death	25
Smoking	25
Childhood Development	25
Childhood Obesity	26
Lifestyle Behaviours	27
Hospital Admissions	27
Pupil Lifestyle Survey	27
Family hubs	27
School Attainment	29
<b>Physical Activity</b>	<b>29</b>
<b>Community Information</b>	<b>30</b>
Population	30
Ethnicity and Language	32
Housing	33



<b>Community Safety .....</b>	<b>35</b>
The Safer Stronger Doncaster Partnership.....	35
Community Voice / Key Safety Concerns .....	36
Crime and Antisocial Behaviour.....	36
Wellbeing Support.....	37
Community Investment.....	38
<b>References .....</b>	<b>40</b>
<b>Appendix .....</b>	<b>40</b>



# Edenthorpe



Significantly  
high rates of  
lung cancer  
compared  
to England



Smoking  
prevalence  
at age 15,  
regular  
smokers is  
10.2%



Respiratory  
Coronary Heart  
Diseases are  
the leading  
cause of  
premature  
mortality in  
Edenthorpe



17.6%  
residents  
live with a  
long term  
limiting  
illness



Alcohol  
related  
hospital  
admissions  
are higher in  
Edenthorpe  
than England



Limited  
green  
spaces

## One Page Summary

Edenthorpe, located to the east of the City of Doncaster, in the Edenthorpe and Kirk Sandall ward. Home to approximately 5,000 residents, Edenthorpe has a demographic profile in which older adults make up a notable proportion of the community. The largest age group locally is those aged 60-65, who represent 8.2% of the population. This age distribution highlights the importance of supporting healthy ageing and ensuring accessible local services for older residents within the ward.

Edenthorpe is less deprived than many Doncaster communities, ranking 73rd out of 88 on the Index of Multiple Deprivation (IMD). However, significant inequalities persist across wealth, health, and social determinants. Poverty has risen sharply since 2019, with 16.1% of residents now affected, including 24.5% of children and 12.3% of older people. Fuel poverty impacts 16.2% of households.

Employment patterns show mixed outcomes with unemployment and “never worked” rates (23.3%) lower than Doncaster averages, and professional roles are more common (17.4%). Yet, 17.9% of adults have no qualifications, and many work in low-paid jobs, creating financial strain.

Smoking prevalence among 15-year-olds (10.2%) is nearly double the national average, aligning with high lung cancer incidence (114.5 per 100,000). Heart disease and respiratory conditions are leading causes of premature mortality, compounded by obesity and alcohol-related admissions. Childhood obesity is concerning with 25.7% of reception-age children and 40% of Year 6 pupils overweight or obese.

While life expectancy is relatively high (80.5 years for males, 83.7 for females), healthy life expectancy for women (61.8 years) lags national averages, meaning prolonged years in poor health. Around 30.8% of older residents live alone, increasing isolation risks. Educational attainment has declined, with Key Stage 2 results dropping from 75% in 2023 to 61% in 2024, and elective home education cases are rising.

Overall, while Edenthorpe fares better than many areas, rising poverty, health risks, limited green space, and educational challenges highlight the need for targeted interventions to prevent widening inequalities.

### Key priorities

- Deaths considered preventable including heart disease are higher in Edenthorpe
- Smoking rates are higher than Doncaster and England
- High levels of childhood at reception and Year 6 ages
- Limited green spaces and low physical activity levels

## Assets

Well Doncaster uses a community centred approach which allows investment in supporting, working with, and empowering communities to facilitate a healthy community. The voice and role of our communities and taking a strength or assets-based approach to work with individuals, families and communities is crucial to the achievement of our overall vision.

### Assets Maps

Health Assets are made up of different assets in the community.

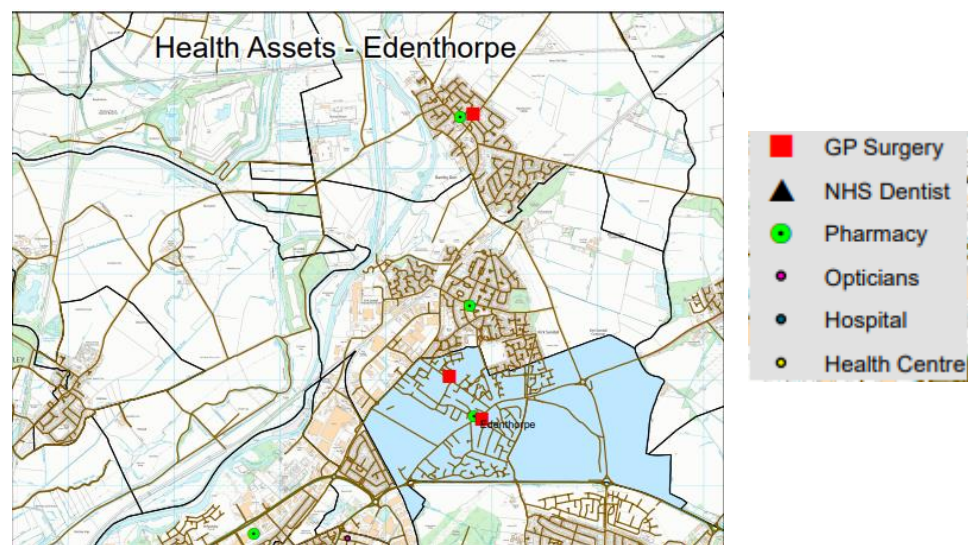


Figure 1. Edenthorpe Health Assets (City of Doncaster Council, 2024)



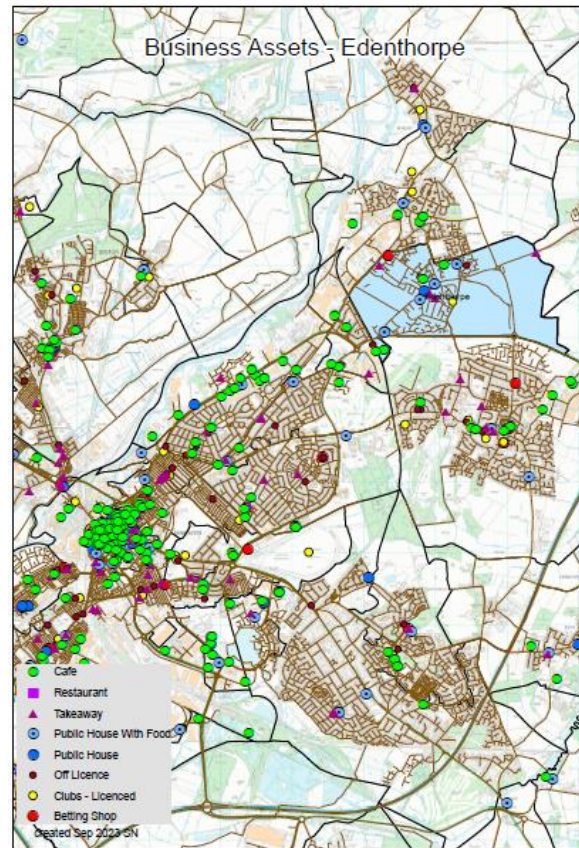


Figure 2. Edenthorpe Business Assets (City of Doncaster Council, 2024)

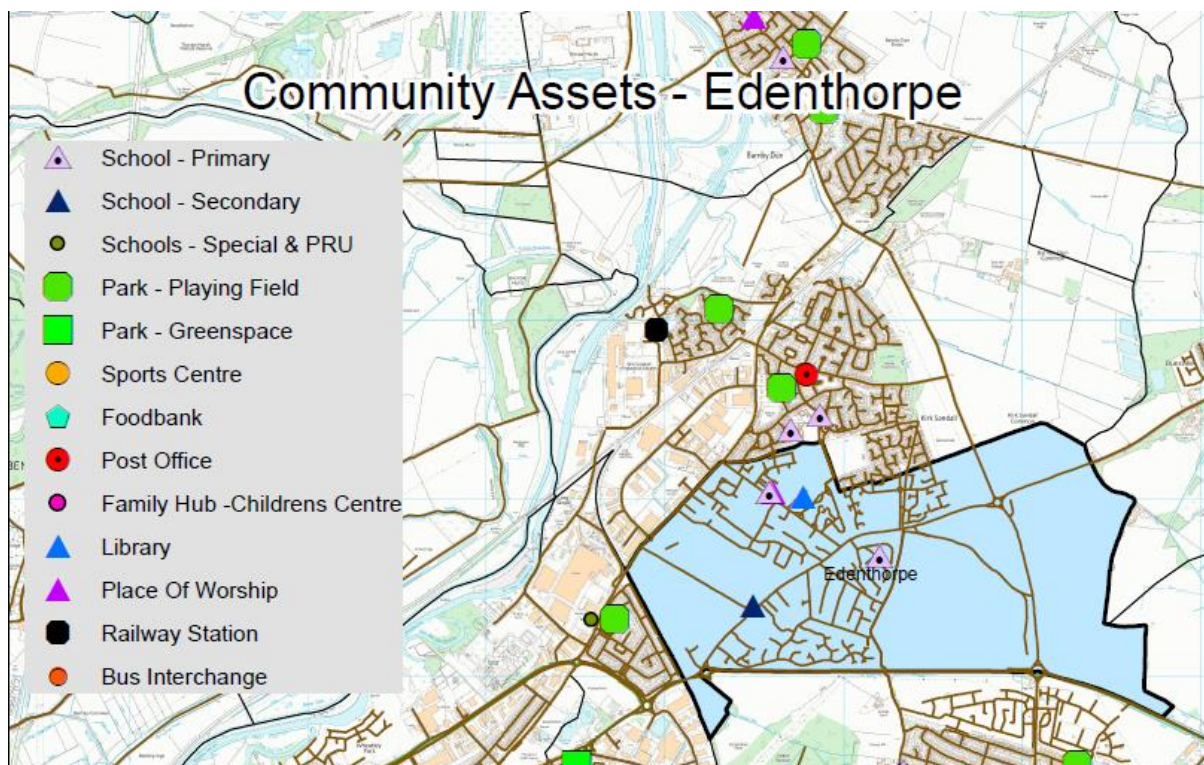


Figure 3. Edenthorpe Community Assets (City of Doncaster Council, 2024)

Edenthorpe is close to the city centre and retail parks which will help with the economy in the community. Edenthorpe hasn't got green space on parks in the community, Kirk Sandall and Barnby Dun both have green spaces which is a short walk for residents in Edenthorpe.

## Population Health Management

It is vital to understand the impact on the community of nationwide influencing factors such as the COVID19 pandemic and cost of living crisis as well as local and regional issues and opportunities. Understanding community organisations and other assets operating in the community helps up to ensure appropriate and targeted support can be offered, and work can be implemented to manage any gaps or risks associated with changes. Well Doncaster undertake regular population health management insight with community organisations in Dunscroft, identifying their current status and needs, and work with each group and partners to meet their goals. This is a living document and will be updated and adapted as needs are met and change. If you would like more detail on this, please contact [welldoncaster@doncaster.gov.uk](mailto:welldoncaster@doncaster.gov.uk)

## Assets in the Community



<b>Institutions</b> (Schools/colleges etc.)	<b>Physical space</b> (Parks, car parks etc.)	<b>Local Economy</b> (Local profit Businesses)
<b>Schools/Education</b> <ul style="list-style-type: none"> <li>Edenthorpe Academy</li> <li>Edenthorpe</li> <li>Hunger Hill School</li> <li>Canon Popham CofE Primary School</li> </ul> <b>Religion</b> <ul style="list-style-type: none"> <li>Life Church Doncaster</li> </ul> <b>Health/ Medical</b> <ul style="list-style-type: none"> <li>Hollybush Health Centre</li> <li>Kingthorne Group Practice</li> <li>Eden Dental</li> <li>Doncaster Pet care</li> <li>Weldricks Pharmacy</li> </ul> <b>Other</b> <ul style="list-style-type: none"> <li>Edenthorpe Community Library</li> <li>Howard Pavilion</li> <li>Then Fred Gee Centre</li> </ul>	<b>Parks/Green Space</b> <ul style="list-style-type: none"> <li>Edenthorpe pit top</li> <li>Edenthorpe War Memorial</li> <li>Allotments</li> </ul> <b>Sports Halls/ Community Venues</b> <ul style="list-style-type: none"> <li>Edenthorpe community Centre</li> <li>Edenthorpe Welfare FC</li> </ul>	<b>Pubs and Restaurants</b> <ul style="list-style-type: none"> <li>Edenthorpe Park Social</li> <li>The Holly Bush</li> <li>The Eden arms</li> <li>Toby Carvery</li> <li>The Beverley Inn</li> <li>The Ridgewood</li> </ul> <b>Food and Beverages</b> <ul style="list-style-type: none"> <li>Westy's Café Coffee Shop</li> <li>Jimmy Pigg's Coffee House</li> <li>Harpers Heavenly Bakes</li> <li>Golden Crown Chinese</li> <li>Ayesha Indian Takeaway</li> <li>Subway</li> </ul> <b>Shops and Supper markets</b> <ul style="list-style-type: none"> <li>Tesco</li> <li>Sainsburys (Argos inside)</li> <li>Premier</li> <li>Lifestyle Express</li> <li>Eden J&amp;D Min Market</li> <li>Eden Stores</li> </ul> <b>Other</b> <ul style="list-style-type: none"> <li>Perfect Cards and Gifts</li> <li>Candy Crafts</li> <li>Barnardos</li> <li>Diannie Babywear baby and Children's Handmade Clothing Shop</li> <li>Chantal's Perfect Day florist</li> <li>The Mens room Barbers</li> </ul>

Table 1. Community Assets, Physical space and Local Economy Edenthorpe



<b>INDIVIDUALS</b> (Key individuals within the community)	<b>ASSOCIATIONS</b> (Local Groups/Clubs)
<ul style="list-style-type: none"> <li>• Ward members</li> <li>• Town Councillors</li> <li>• East Family hub staff</li> <li>• Community volunteers</li> <li>• East Stronger community team</li> <li>• Well Doncaster officers</li> <li>• Vicar</li> </ul>	<ul style="list-style-type: none"> <li>• Little Movers</li> <li>• Edenthorpe Friends</li> <li>• Elmtree Dogs</li> <li>• Sophie Street dance</li> <li>• Badminton</li> <li>• Edenthorpe Football Club</li> <li>• Eden G Community Garden</li> <li>• Edenthorpe Thursday Bowls</li> </ul>

*Table 1. Community Assets - Individuals and Associations Edenthorpe*

## Community Insight

### Appreciative Inquiry

The Well Doncaster Team undertake Appreciative Inquiry (AI) within communities to gather insight to support code signing action plans with the community. Armstrong (2020) suggests in 'A changing world, again. How Appreciative Inquiry can guide our growth' that reframing the questions considering a crisis like Covid-19 and drawing on strengths and assets from past positive experience will help participants as they restructure their community. The AI questions are structured to pull out the successes of the past and present, to seek new potentials and possibilities and build on those through the Dream and Design stages.

Appreciative Inquiry will be conducted in Edenthorpe from July 2021. The Appreciative Inquiry will include the following steps:



1. **Discovery Phase** – This will involve engagement with the residents of Edenthorpe to find out what is working well in the community. Responses will be themed to allow priorities of the community to be established.
2. **Dream** – Residents and key stakeholders will be invited to attend an initial workshop to discuss what ideas they have for their community and how these will meet the priorities highlighted in the discovery phase.
3. **Design** – All attendees are invited back for a second workshop to develop an action plan to direct work for the community.
4. **Deliver** – A collaborative way of working and investing resources in working towards the actions from the previous phase.

Community conversations in Edenthorpe are ongoing. All responses have undergone a thematic analysis leading to a thematic analysis framework, highlighting key themes and priorities for the community. The thematic analysis is taken from conversations from March 2023 to March 2025

Theme	Subtheme	Quotes	Commentary
Accessibility and Convenience of Local Services	<ul style="list-style-type: none"> <li>Proximity to Shops and Amenities</li> <li>Transport and Mobility</li> <li>Independence</li> <li>Convenience</li> <li>Physical activity</li> <li>Social Connections</li> </ul>	<p><i>"I've got everything I need on my doorstep, everything is within walking distance." ED2759</i></p> <p><i>"There are also some good local shops which are close and convenient." ED5246</i></p> <p><i>"Lots of supermarkets. Local amenities." ED5666</i></p> <p><i>"Good transport connections." ED5246</i></p> <p><i>"In case I haven't got a car, it means I can get to everything I need." ED2759</i></p>	<p>The area is clearly valued by residents for its strong sense of accessibility and convenience. Everyday essentials, from supermarkets to local shops, are within easy reach, making it possible for people to live comfortably without relying heavily on cars. This walkability not only supports independence but also contributes to a healthier, more sustainable lifestyle.</p> <p>Transport infrastructure is another standout feature. With reliable bus services, nearby railway stations, and motorway links, the community is well-connected both locally and regionally. This ease of movement enhances opportunities for work, leisure, and social engagement.</p> <p>Leisure and recreational amenities also play a key role in shaping the quality of life. Whether it's green spaces for walking, sports facilities, or social clubs, residents benefit from a variety of options that support wellbeing and community interaction.</p> <p>The area's appeal to families is evident, with good access to schools and child-friendly services. This makes it an attractive place for younger households looking for a supportive environment to raise children.</p> <p>Community spirit shines through in the presence of local events, cafés, and gathering spaces. These hubs foster inclusion and provide opportunities for residents to connect, reinforcing the area's reputation as a welcoming and vibrant place to live.</p> <p>The area's key practical advantage is its exceptional convenience and amenity access. Residents benefit from "easy access to appointments" due to "multiple</p>

			<p>drs" and nearby healthcare, supported by robust transport links including "railway, bus services, road network for cars, &amp; motorway access." Local life is further enhanced by easily accessible "top shops," cafes to "meet people," and popular venues like the community centre for activities like bowling, ensuring comprehensive access to services and leisure.</p>
Community and Social Connection	<ul style="list-style-type: none"> <li>• Social Interaction and Belonging</li> <li>• Intergenerational and Social Inclusion</li> <li>• Community Facilities and Safety</li> </ul>	<p>" Keep going, socialising, friends family"ED2750</p> <p>" Being there for family and friends"ED2736</p> <p>" Because I'm very much a people person, I like connecting with people and places...therefore community is important to me."ED1242 NL</p> <p>" I like going to the group to socialise, it makes a change for me"ED1062</p>	<p>Social interaction and a sense of community are central to residents' quality of life. People value opportunities to connect with others through groups, community centres, and everyday encounters like being served in a shop. There is also a strong intergenerational awareness, with older residents expressing concern for the younger generation's opportunities and social development. This theme underscores the importance of inclusive, community-based initiatives that support both social wellbeing and intergenerational cohesion.</p> <p>The community's appeal rests on its social warmth and familiarity. Residents consistently describe the area as "nice" and a "good/nice community," built upon the foundation of "friendly neighbours." This positive environment fosters close-knit bonds where "Everyone knows everyone" and leads to strong mutual support, evidenced by statements like "We help each other" and the feeling that it is a "sociable place."</p>
Physical Environment	<ul style="list-style-type: none"> <li>• Green and Recreational Spaces</li> <li>• Quiet and Pleasant Surroundings</li> <li>• Pride</li> <li>• Enjoyment</li> <li>• Impacts on wellbeing</li> <li>• Quality and pride</li> </ul>	<p>" it has nice green spaces"ED3369</p> <p>"its quiet and my house is not overlooked"ED3381</p> <p>" Lots of Green Space, parish lands, glass park, meadow &amp; orchard. Walks along the canal are lovely. Lots to do outdoors"ED4354</p> <p>" Being outside and walking by the canal makes me feel happy. I can be outside and surrounded by nature easily."ED5011</p> <p>" Important to have outdoor spaces to use, places to walk puppy."ED4354</p>	<p>The physical environment, particularly green spaces and parks is a source of pride and enjoyment. These spaces not only offer recreational opportunities but also contribute to the overall pleasantness and tranquillity of the area. The presence of well-maintained parks and quiet surroundings enhances residents' mental and physical wellbeing, reinforcing the value of investing in public spaces.</p> <p>Residents highlight the community's optimal centrality and accessibility, noting that its location provides "lots of transport, and access to green spaces" and makes "everything is accessible by cycling and walking." This convenience is complemented by a strong social foundation: the area is perceived as "safe and secure" with "no antisocial behaviour," where "everyone cares about their community," fostering a positive environment with "lots of activities going on in there."</p>

Table 3: Thematic Analysis Framework (City of Doncaster Council, 2025)

## Ward Members

The Edenthorpe and Kirk Sandall has two ward members both were elected in May 2025.



Councillor  
Alexander Jones

Edenthorpe and  
Kirk Sandall  
Reform UK



Councillor David  
Nevett

Edenthorpe and  
Kirk Sandall  
Labour  
Cabinet Member  
for Adults,  
Wellbeing and  
Culture



## Health and Wealth

Health inequalities are avoidable differences across the population and between different groups within society. Health inequalities arise from the conditions in which we live, work and play. These conditions influence our opportunities for good health, how we think, feel and act, therefore shaping our health and wellbeing.

## Deprivation

Health inequalities are avoidable differences across the population and between different groups within society. Health inequalities arise from the conditions in which we live, work and play. These conditions influence our opportunities for good health, how we think, feel and act, therefore shaping our health and wellbeing.

Evidence shows that people living in our most deprived areas face the worse health inequalities in relation to health access, experiences, and outcomes. Deprivation covers a range of issues and refers to unmet needs caused by a lack of resources, including but not limited to finances, housing, and education. It is measured in different ways including the Indices of Multiple Deprivation (IMD).

The map below shows the national IMD Deciles across Doncaster by Lower Super Output Area (LSOA). Areas in red indicate higher levels of deprivation. New data for 2025 shows that the IMD score in Edenthorpe is 13.91 ranking 73<sup>rd</sup> out of 88 communities in Doncaster for deprivation.

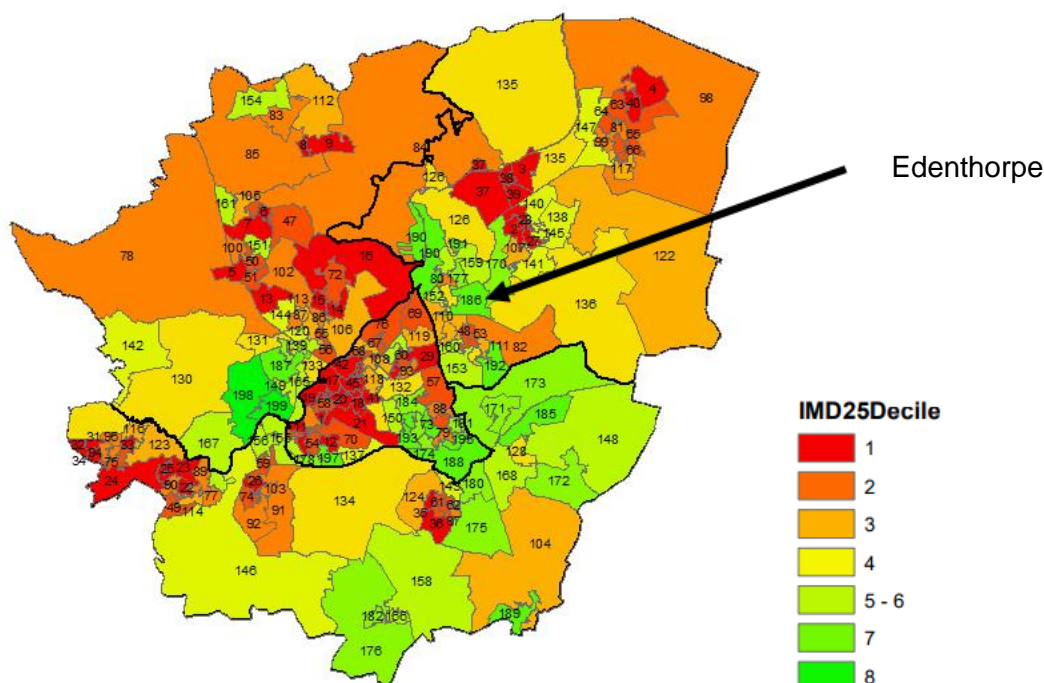


Figure 4. Index of Multiple Deprivation Deciles by LSOA 2025 – Doncaster (Office of National Statistics, 2025)



The 2021 Census data has been used to produce estimates that classify households in England and Wales by four dimensions of deprivation: employment, education, health and disability and household overcrowding.

The Census 2021 data breaks down this information into household deprivation within Edenthorpe area compared to Doncaster and England. 51.2% of households in Edenthorpe are not deprived in any dimensions which is significantly higher than Doncaster (43.7%) and England (48.4%).

12.8% of households are deprived in two dimensions lower than Doncaster (16.7%) and England (14.2%) and households deprived in three dimensions (2.5%) are significantly lower than Doncaster (4.6%) and England (3.7%).

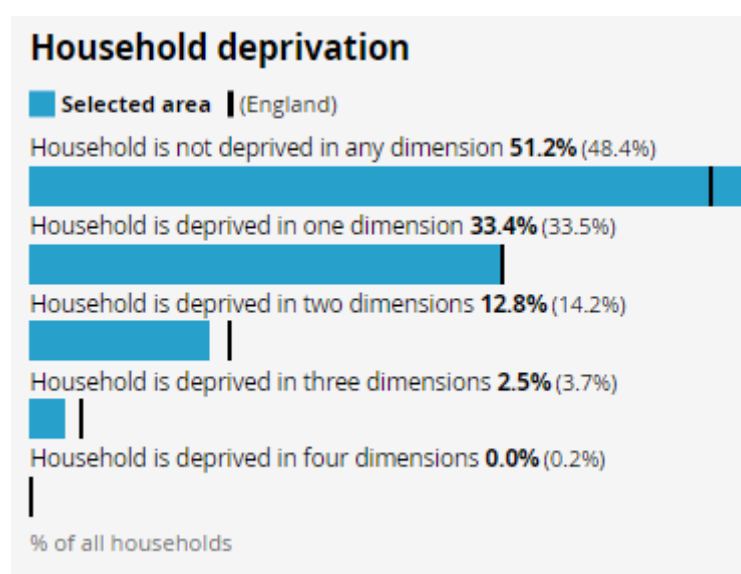


Figure 5. Edenthorpe household deprivation (Office of National Statistics, 2025)

## Wealth Inequalities

In 2025, 17.4% of Edenthorpe & Mere Lane Middle-layer Super Output Area (MSOA), residents are experiencing poverty, lower than the Doncaster average of 29.3%. This is a significant increase from 2019, where 8.4% of residents were living in poverty.

The proportion of older people in poverty in Edenthorpe & Mere Lane MOSA (13.2%) is lower than the Doncaster rate (19.4%), similarly to all people, this has increased (from 11.3%) since 2019.

Furthermore, 27.3% of children are living in poverty in Edenthorpe & Mere Lane MSOA, lower than the Doncaster average, 47.1%, an increase from 10.6% in 2019.

When considering the change from 2019 to 2025 data, it is important to note that there have been changes to the calculation of the source data, the income deprivation domain in the Indices of Multiple Deprivation. While it can be inferred that there has been an increase in the proportion of people living in poverty, the changes in this indicator may contribute to the significance of this change.

At community level, the data differs slightly, with 16.1% of Edenthorpe residents experiencing poverty, 12.3% of older people and 24.5% of children.

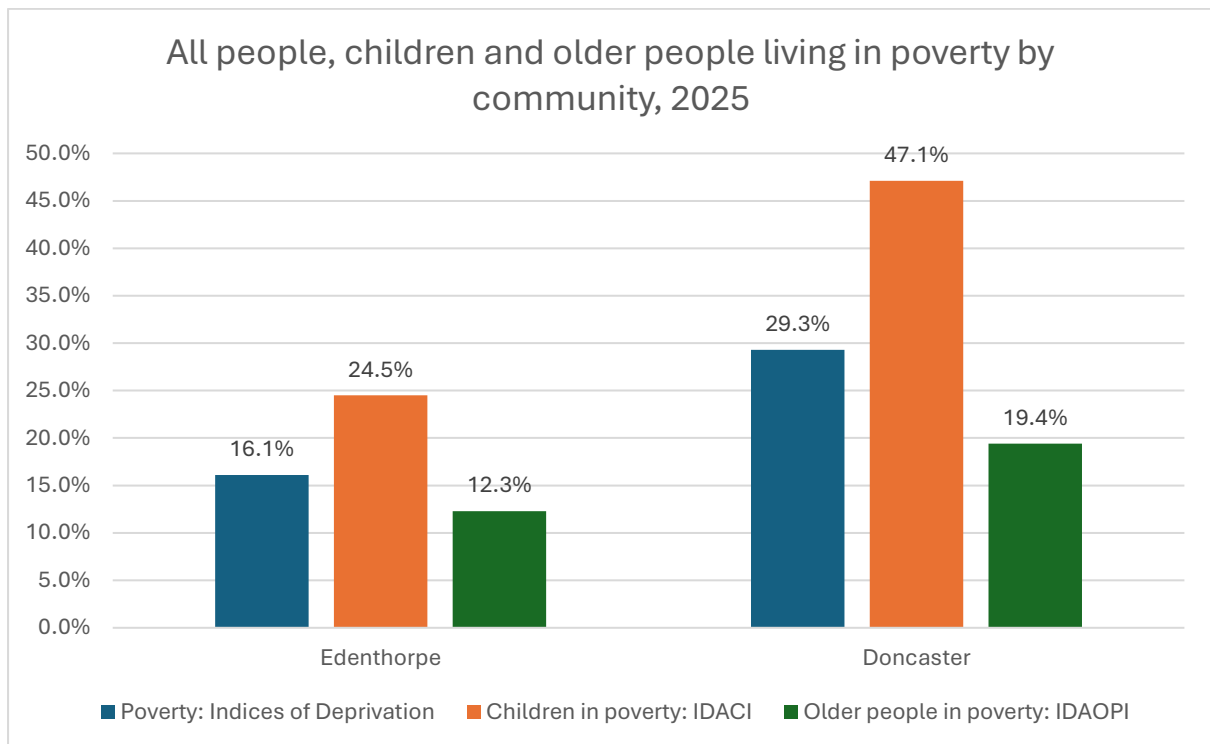


Figure 6: Poverty prevalence using IMD25 (Office of National Statistics, 2025)

## Employment

In Edenthorpe and Mere Lane MSOA, 23.3% of residents aged 16 and over are not in employment and have never worked, significantly lower than Doncaster (27.2%) and England (25.6%).



Figure 7. Not in employment & never worked – Edenthorpe and Mere Lane (Office of National Statistics, 2025)

In Edenthorpe, of those who are in work the majority work full time (61.7%), which is higher than figures for Doncaster (60.7%) and England (59.1%) and 20.4% work part time, less than Doncaster (28.9%) and England (29.8%).

Occupation type shows that Elementary Occupations (9.7%) is lower than Doncaster (16.5%) and England (10.5%) and skilled trades occupation (11.7%), similar to Doncaster (11.7%) and England (10.2). Traditionally these roles are low skill and low pay roles. Furthermore, 17.4% are employed in Professional Occupations, higher than Doncaster (12.8%) and England (20.3%), usually requiring higher skill levels, education and receive higher pay. Contrastingly,

A large percentage of people aged 16 years and older in Edenthorpe have no qualifications (23.3%) compared to Doncaster (24.6%) and England (18.1%). Residents who are qualified to Level 1, 2 and 3 qualifications, higher in Edenthorpe (45.1%) than Doncaster (43.1%) and England (33.9%).

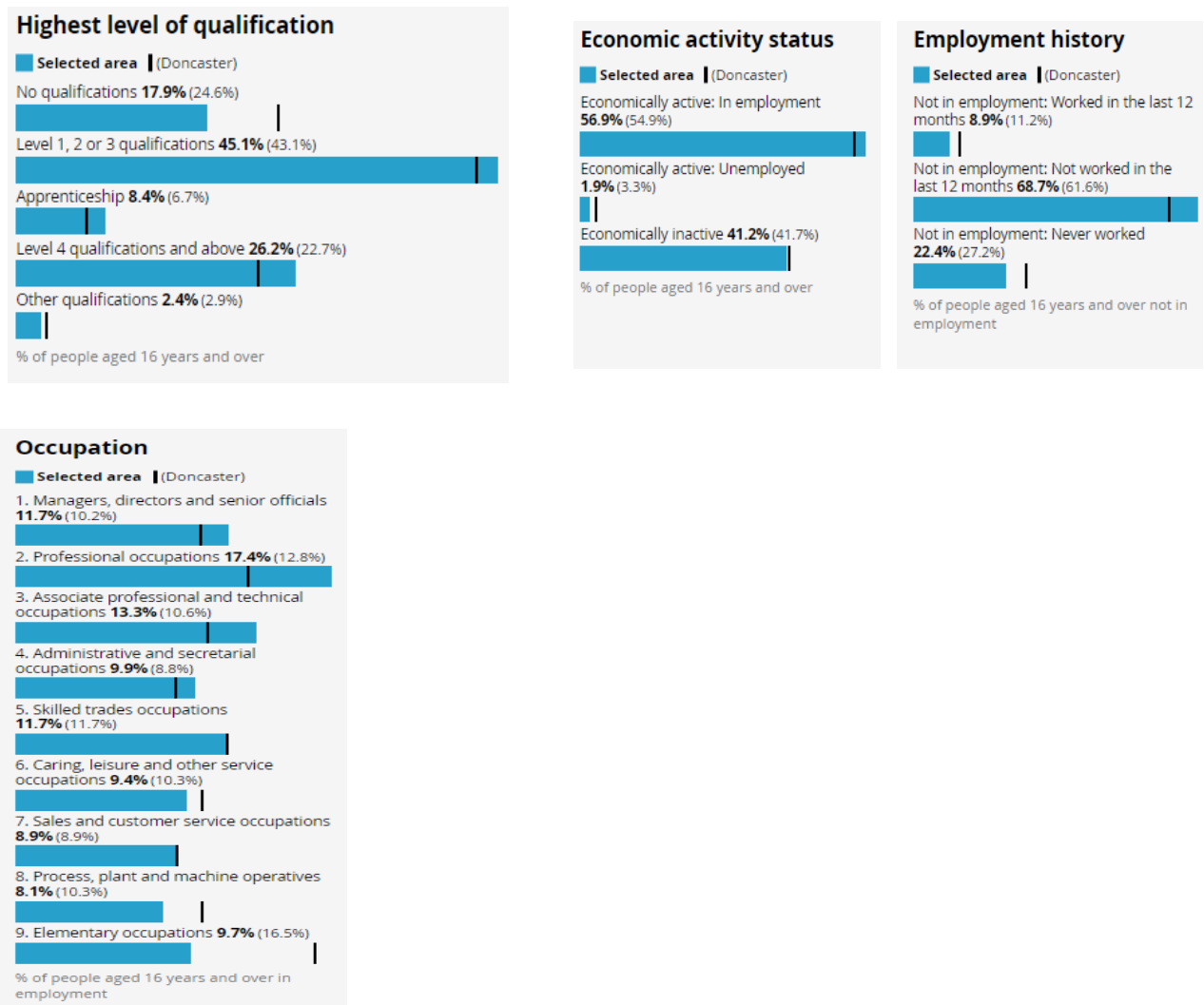


Figure 8. Employment History, Occupation & Highest level of Qualification for Edenthorpe compared to Doncaster (Office of National Statistics, 2025)

## Food Poverty

There are 4 active foodbanks in the East locality of Doncaster (equivalent to 15.8% of foodbanks across the city), namely Armthorpe Food Project, DN7 Foodbank, Moorends Miners Welfare, and Thorne and Moorends Foodbank. None of these foodbanks for located in Edenthorpe.

### The Bread-and-Butter Thing

The purpose of The Bread-and-Butter Thing (TBBT) is to address moderate food insecurity, helping minimise demand on crisis support i.e. Foodbanks. TBBT also reduce poverty premiums that families in low-income areas can face, reduce waste by identifying edible surplus food in the UK food sector and redistributing it, to build resilience within the communities. TBBT establish a mobile food club which gives access to nutritious and affordable food taken into the heart of communities starved of money, food, and resources. There is no eligibility, and parcels are based on a weekly



shop and provides essential produce for family eating – fresh fruit and veg, chilled goods and cupboard staples. Deeply discounting a family's shopping and stretching their budget. A members average weekly saving is £26.50

Throughout the City there are five Hubs based in the following communities: Mexborough, Rossington, Carcroft, Thorne and Hexthorpe. Each site offers 80 residents the opportunity to access affordable food, ensuring 400 residents per week get the help they need. In 2024 across the five sites 1596 volunteering opportunities were accessed with 3241 residents accessing the support.



Figure 9. Heat map of The Bread-and-Butter Thing in Edenthorpe. (City of Doncaster Council, 2025)

## Fuel poverty

Fuel poverty is defined as a household living on a lower income which is not deemed reasonable enough to warm a home sufficiently. In 2020, (16.2%) of households in Edenthorpe and Kirk Sandall ward were unable to warm their homes to a reasonable standard which is lower than Doncaster (18.8%) and significantly higher than England (13.2%).

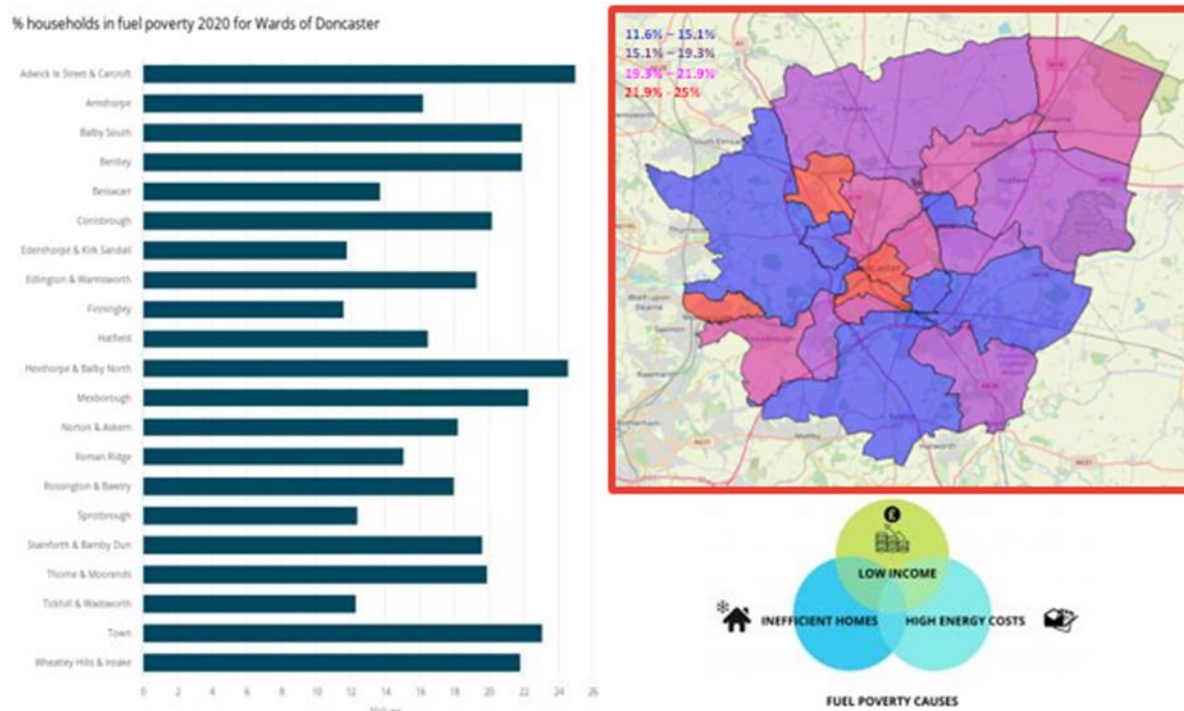


Figure 10. Households in Fuel poverty 2020 by Wards in Doncaster (City of Doncaster Council, 2020)

## Citizen's Advice Doncaster Borough

Citizens Advice Doncaster Borough (CADB) are an independent charity and part of the Citizens Advice Network across England and Wales. They provide free, confidential and impartial advice and campaign on money, benefit, housing or employment issues affecting people's lives.

At a ward level, in fiscal years 2023/24 there have been a total of 1,383 new interactions and 81 repeat interactions with 130 individuals across 84 postcodes in the ward. Income gain, that is the total amount of money saved following support from CADB, totalled £322,690 that year for the ward. The top reason residents were seeking support was for debt and benefit advice. In the latest fiscal year 2024/25, new interactions totalled 283, with 63 repeat interactions across the ward. CADB supported 78 clients across 58 postcodes in this fiscal year and income gained totalled £74,317. The main reason residents accessed CADB that year, was for support with debt.



Image 1

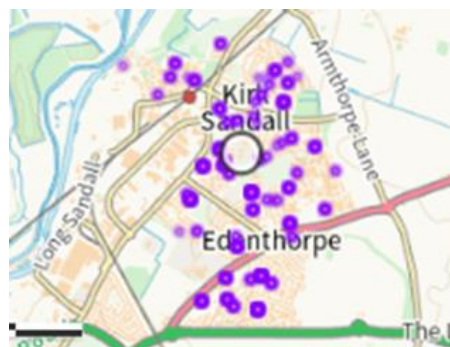


Image 2

Figure 11. Postcode Map of Residents Accessing Citizens Advice Doncaster Borough. Image 1: Fiscal Year 2023/24 data. Image 2: Fiscal Year 2024/25 (CADB, 2025)

The top 5 issues in 2025-26 that residents are seeking advice about is showed in the diagram below. Debt, benefits and tax credits advice were the top two issues.

Issue 1 - Top 5

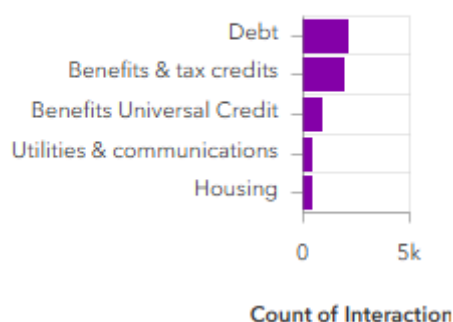


Figure 12. Table of priorities in Edenthorpe and Kirk Sandall ward 2025/26 (CADB, 2025)

## Health Inequalities

### Life Expectancy

Healthy life expectancy is defined as the number of healthy years someone is expected to enjoy before they experience a health condition which affects their daily life, this adds a quality-of-life dimension to life expectancy. The aim is to close the gap between healthy life expectancy and life expectancy as this difference is the number of years spent in poor health

Residents living in Edenthorpe and Kirk Sandall ward have a life expectancy of 82.4 years for males and 83.7 years for females. Edenthorpe and Kirk Sandall has a higher

life expectancy for Males and Females than Doncaster (77.7 years for Males and 81 years for Females) and England (78.6 years for Males and 82.6 years for Females).

Healthy life expectancy is defined as the number of healthy years someone is expected to enjoy before they experience a health condition which affects their daily life, this adds a quality-of-life dimension to life expectancy. The aim is to close the gap between healthy life expectancy and life expectancy as this difference is the number of years spent in poor health. In Edenthorpe and Kirk Sandall ward, healthy life expectancy for males is 66.8 years, significantly higher than Doncaster (57.4 years) and higher than national average of 63.1 years. Females in Edenthorpe and Kirk Sandall ward are expected to live 61.8 years in good health, higher than the average across Doncaster (56.1 years) and higher than the national average (63.9 years).

## Long-Term Health Conditions

The 2021 census data is showing in Edenthorpe community, 46.7% have reported very good health which is lower than England (48.5%) but higher than Doncaster rate (44.3%). The percentage of residents with bad health is (3.9%), similar England (4.0%) but lower than Doncaster (5.3%). In Edenthorpe and Kirk Sandall ward, the number of people who report living with a long-term illness (17.6%) is similar to England (17.6%) and lower than Doncaster (21.7%).

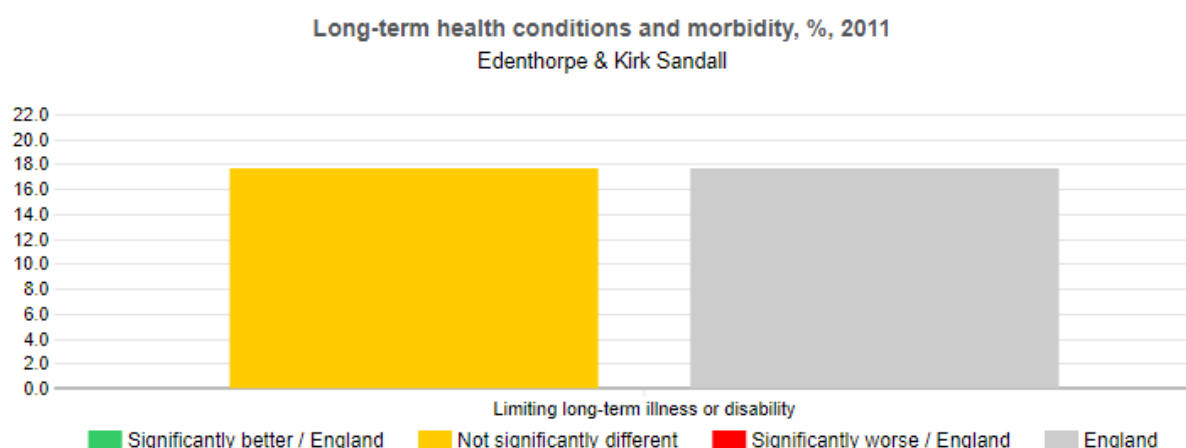


Figure 13. Edenthorpe and Kirk Sandall Long term conditions (Office of National Statistics, 2021)

Edenthorpe and Kirk Sandall ward record high incidence of lung cancer with an ISR of 114.5 per 100 compared to England (100 per 100). Heart disease, circulatory disease, Stroke and Chronic Heart Disease (CHD) are the leading causes of all age and premature mortality in Edenthorpe. Risk factors associated with preventable diseases such as heart disease and obesity are high as well as lifestyle factors including alcohol consumption. Hospital admissions for alcohol attributable conditions

in Edenthorpe have an ISR of 106.8 per 100 which is higher than Doncaster (125.1 per 100) when using England as the baseline (100 per 100).

## Incidence of Death

Edenthorpe exhibits lower of mortality compared to Doncaster and England. The leading cause of death are those considered preventable. The basic concept of preventable mortality is that deaths are considered preventable if, in the light of the understanding of the determinants of health at the time of death, all or most deaths from the underlying cause could potentially be avoided by public health and primary prevention interventions (that is, before the onset of diseases or injuries, to reduce incidence).

Mortality from all causes in Edenthorpe and Mere Lane MSOA using ISR, 99.4 per 100 per population, is lower than Doncaster 117.1 per 100 and similar to England rate at 100 per 100.

Mortality from cardiovascular disease (aged under 75) in Edenthorpe using ISR 118.6 per 100 this is lower than Doncaster 125.8 per 100 and higher than England 100.0 per 100.

## Smoking

The smoking rate for Edenthorpe and Kirk Sandall ward is 10.2%, this is lower compared to Doncaster's rate so 17.96% and England at 11.6%.

Action on Smoking and Health (ASH) estimates smoking costs Doncaster £335 million per year, the combined cost of smoking-related medical treatment via hospital admission and primary care services is £16.5 million. Social care costs due to smoking amounts to an estimated £115 million annually in Doncaster with the majority being lost to informal care costs from friends and family (£64.3 million).

The gross annual cost of smoking as of Spring 2024 was £6.38 million. An estimated £1.93 million is spent annually on tobacco products in Edenthorpe and Kirk Sandall ward and the national average spend on tobacco per smoker now stands at £2,486. Smoking has a significant impact on employment and productivity, in Edenthorpe and Kirk Sandall ward, the total cost due to lost productivity from smoking was estimated at £3.59 million which is lower than the city average (£6.5M).

## Childhood Development

A child's early experiences are vital in providing the foundations for children to develop healthily and happily. Children being born into deprivation and living amongst deprivation in their early years are more likely to experience a wide range of health problems, fall behind their peers and face employment problems in adult life. The quality of early experiences is important as children develop, providing opportunity for



motor (physical), intellectual (language and communication), cognitive and socio-emotional development.

The Income Deprivation Affecting Children Index (IDACI) measures the proportion of all children aged 0 to 15 living in income deprived families. In Edenthorpe, 24.5% of children are classed as living in child poverty, this is lower than the Doncaster rate (47.1%).

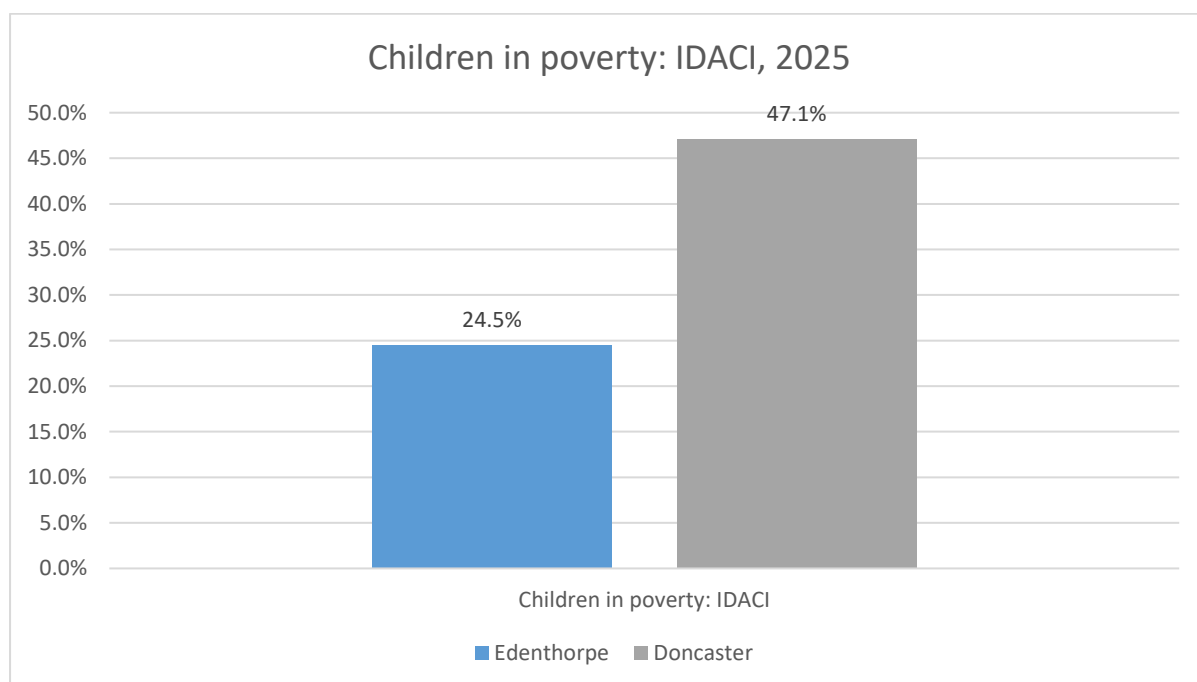


Figure 14. Children in poverty: Income Deprivation Affecting Children Index (IDACI) (aged 0 to 15) (Office of National Statistics, 2025)

## Childhood Obesity

Childhood obesity and inequality are closely connected. Children from families with less money often have fewer chances to eat healthy food or play outside safely. They might live in areas without parks or easy access to affordable fresh fruits and vegetables. These challenges make it harder for them to stay at a healthy weight. Because of this, childhood obesity is more common in deprived communities. Helping all children grow up healthy means making sure every family has access to good food, safe places to play, and support for healthy living.

According to 2024/25 data from the Office for Health Improvements and Disparities (OHID), 25.7% of reception-age children in the Edenthorpe and Mere Lane MSOA are overweight or obese, compared to 26.7% across Doncaster and England 22.3%. The prevalence of obesity (including severe obesity) in this age group stands at 8.6% which is lower than both the Doncaster rate of 12.1%, and England of 9.8%.

Year 6 prevalence of overweight (including obesity) 2024/25 40% in the Edenthorpe and Mere Lane MSOA. Edenthorpe and Mere Lane is in line with Doncaster 40.2% and slightly higher than England 36.2%.

## Lifestyle Behaviours

In Edenthorpe the prevalence of regular smokers at age 15 (10.2%) are higher than Doncaster (6.8%) and England (5.4%).

## Hospital Admissions

In 2020, emergency admissions in under 5s is higher in Edenthorpe and Mere Lane MSOA (94.8 per 1000) than Doncaster (91.0 per 1000) and lower than England (140.7 per 1000). Emergency hospital admissions for under 15-year-olds (71.6 per 10,000) are lower than Doncaster (88.8 per 10,000) and England (92.0 per 10,000).

## Pupil Lifestyle Survey

The Pupil Lifestyle Survey is conducted by City of Doncaster Council to provide valuable data on children and young people's health-related behaviour, through an anonymous school-based questionnaire. Data from the survey has provided a set of Doncaster-wide figures at key points in children and young people's development; KS2, 3 and 4.

Only 28 pupils from Edenthorpe or Kirk Sandall ward took part in the Pupil Life survey 2024. There was no data before the 2024 report.

100% of participants have breakfast, this is higher than the Doncaster (86%). 11% of school-aged children in Stainforth have free school meals, this is lower than Doncaster (19%). Daily fruit and vegetables consumption is 86%, higher than Doncaster (67%).

96% of children reported that they felt safe at home which higher than Doncaster (88%) and 93% have a nice, safe place at home or near home to play which is higher than Doncaster (87%).

89% of school children in Edenthorpe and Kirk Sandall ward surveyed in 2024 reported that they feel able to get involved in the wider community which higher than Doncaster (59%).

## Family hubs

There are three Family Hubs in the East localities of Doncaster, namely Armthorpe, Moorends, and Stainforth.

Family Hubs are local, community based, centres that offer integrated services for families from the early stages of life covering conception and early childhood up to adolescence, and up to age 25 for individuals with special educational needs and disabilities (SEND). Family Hubs offer early years and parental support including antenatal and postnatal care, baby and toddler classes, infant feeding, parenting programmes, SEND pathways and specialist support for mental health, domestic abuse, welfare and substance misuse. Family Hubs provide welcoming community spaces for families, bringing together education, health, social care, and wellbeing services in one facility and cater for a broad spectrum of needs. There are twelve

Family Hubs across Doncaster, with three located in the South locality including Denaby and Conisbrough, Mexborough and Rossington.

Membership across Edenthorpe is high for children aged 0-4 years and 11 months and children aged 0-1 year and 11 months. This remains high for 0-8 weeks.

Accessing (seen 1-2 times) in Edenthorpe is high for children aged 0-4 years and 11 months. Accessing figures for children aged 0-1 year and 11 months are low for Edenthorpe.

Engaging figures (seen 3+ times) high for children aged 0-4 years and 11 months whereas is low for 0-1 year and 11 months. Edenthorpe could see low engagement due to not having a community asset that the Family Hub can use.

Access data includes the percentage of children using Family Hubs services once or twice and engagement figures indicate the number of children seen three or more times. There are several factors that could contribute to membership, access and engagement figures which must be considered when interpreting data. A complex relationship exists between socioeconomic, cultural, education, deprivation and independence as well as other factors and indicators which can influence these rates.

	0-8 weeks	0-1 year and 11 months	0-4 years and 11 months
Membership	80%	94%	98%
Access	NA	77%	93%
Engagement	NA	47%	81%

*Table 4. Family Hubs Membership, Access and Engagement data for Kirk Sandall (City of Doncaster Council, 2025)*

As of Summer 2025, term 64.0% of children in Doncaster eligible for two-year funding are taking up their place. This figure has dropped each term over the last year in all localities, with the biggest drops seen in Central and South localities.

Edenthorpe is in line with Doncaster.

East Family Hubs 2-year funding take up	
Spring 2025	55.6%
Spring 2025 (late starters)	55.6%
Summer 2025	62.5%
Summer 2025 (late starters)	62.5%

*Table 5. 2-year funding take up in Kirk Sandall (City of Doncaster Council, 2025)*

## School Attainment

The Department for Education supplies each local authority with the school attainment grades for those in Key Stage 2 (KS2) and Key Stage 4 (KS4).

In 2024, 61% of pupils achieved the expected standard in reading, writing, and mathematics at KS2 in Edenthorpe. This is in line with Doncaster (59%), and England (61%). However, this has decreased from 2023 where 75% of pupils achieved the expected standard in reading, writing, and mathematics at Key Stage 2 in Edenthorpe.

At KS4, each pupil is given an Attainment 8 score (a score out of 90) based on their 8 best GCSE grades including English, maths and at least 3 other traditional academic GCSEs (sciences, languages, and humanities). Other qualifications at an equivalent level (e.g., BTECs) can also count towards the score. In 2024, school attainment for KS4 in Edenthorpe was 51%, which is higher than Doncaster (45.9) and England (44.4), this has increased from 48.9 in 2022.

19 children have been recorded as receiving Elective Home Education and 3 recorded as missing education in Edenthorpe.

## Physical Activity

The following map show where there are high numbers of inactive households around the borough. Data is mapped to LSOA, but wards are shown and labelled for orientation. This can be seen in the map below, which identifies areas with the highest number of inactive households. This data has been matched to the number of children and young people living in deprived and inactive households. People living in income deprivation means only people living on social benefits but also in low income or/or precarious work.

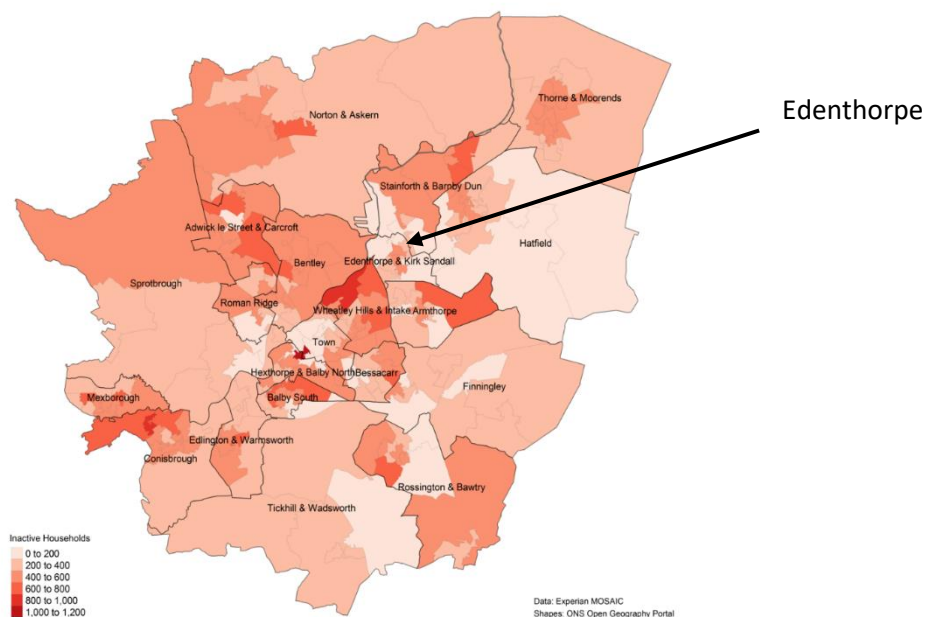


Figure 15. Mosaic map of household physical activity levels in Doncaster. (Office of National Statistics, 2025)

According to the 2024 Pupil Lifestyle Survey, only 21% of young people in Edenthorpe and Kirk Sandall ward walk to school. This is significantly lower than the Doncaster average of 39% in 2024. It also represents a decrease from 2023, when 42% of Edenthorpe and Kirk Sandall ward pupils walked to school, compared with the Doncaster average of 44% that year. In 2023-24 100% young people in Edenthorpe and Kirk Sandall ward take part in physical activities in the past 7 days which is slightly higher compared with Doncaster 97%.

## Community Information

### Population

Edenthorpe: 4973

Edenthorpe has an older age profile than Doncaster overall, with noticeably more residents in the 60–69, 75–79 and 85+ age bands. In contrast, it has fewer young adults aged 20–39 and slightly fewer very young children aged 0–9. Older children and teenagers (10–19) are slightly more represented in Edenthorpe. Overall, this suggests a community with a stronger older population and a smaller proportion of younger working age adults and young families compared with the wider Doncaster population.



The age composition of Edenthorpe's population is taken from the 2021 Census and is illustrated in the chart below. There is a strong working age population in the community.

Edenthorpe		Doncaster	
Age Band	Proportion	Age Band	Proportion
4 & under	4.6%	4 & under	5.5%
5 - 9 years	5.0%	5 - 9 years	5.9%
10 - 14 years	7.0%	10 - 14 years	6.0%
15 - 19 years	5.8%	15 - 19 years	5.2%
20 - 24 years	4.1%	20 - 24 years	5.3%
25 - 29 years	4.9%	25 – 29 years	6.6%
30 - 34 years	5.8%	30-34 years	7.01%
35 - 39 years	6.4%	35-39 years	6.7%
40 - 44 years	5.9%	40-44 years	5.8%
45 - 49 years	5.8%	45 - 49 years	6.01 %
50 – 54 years	7.4%	50 – 54 years	7.1%
55 – 59 years	6.7%	55 – 59 years	7.1%
60 – 64 years	8.2%	60 – 64 years	6.4 %
65 – 69 years	6.5%	65 – 69 years	5.4 %
70 – 74 years	5.5%	70 – 74 years	5.3%
75 – 79 years	4.5 %	75 – 79 years	3.7%
80 – 84 years	3.0%	80 – 84 years	2.6 %
85 and over	3.1%	85 and over	2.4%

*Table 6. Age profile of Edenthorpe compared to Doncaster, (Office of National Statistics, 2021)*

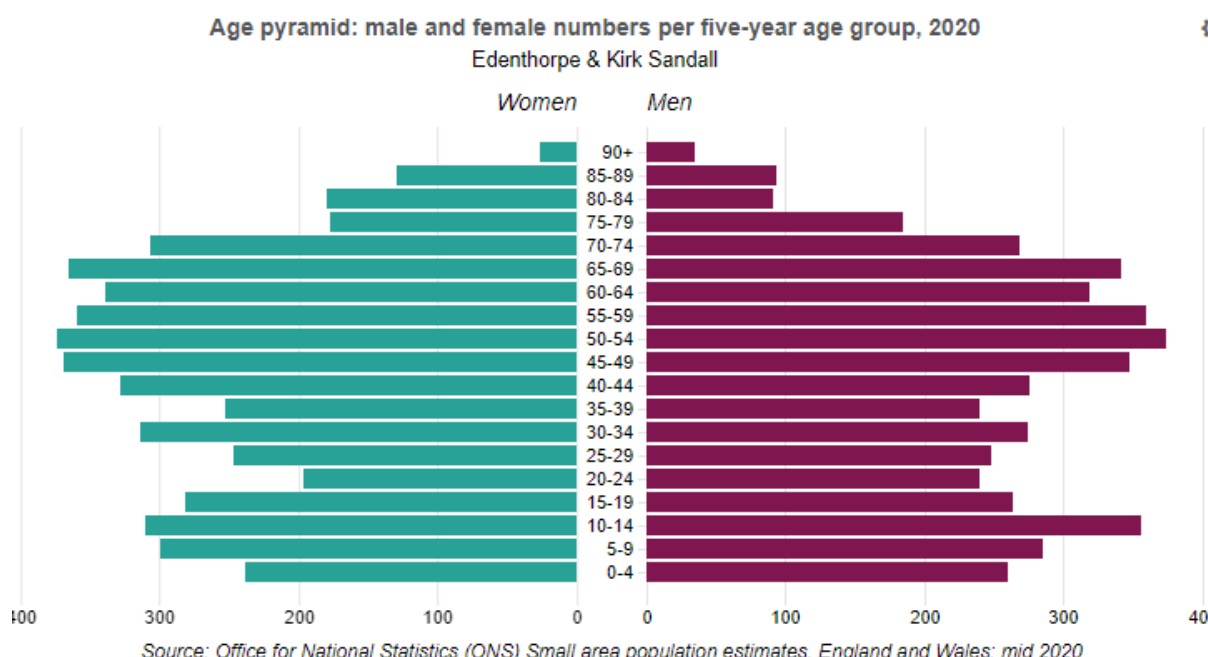


Figure 16. Age population in Edenthorpe and Kirk Sandall (Office of National Statistics, 2020)

## Ethnicity and Language

Edenthorpe continues to be predominantly White British (96.4%), higher than Doncaster (93.1%) and England (81.0%). 0.5% of the population identify as Black, Black British or Black Welsh, lower than Doncaster (1.2%) and England (4.2%). 2.0% identify as Asian, Asian British or Asian Welsh, lower than Doncaster (2.9%) and England (9.6%) In addition only 0.7% of residents identify as from mixed or other ethnic groups, significantly lower than Doncaster (2.7%) and England (5.2%). This aligns with a low number of residents in Edenthorpe that cannot speak English well or at all (0.3%), compared to Doncaster (1.6%) and England (1.9%).

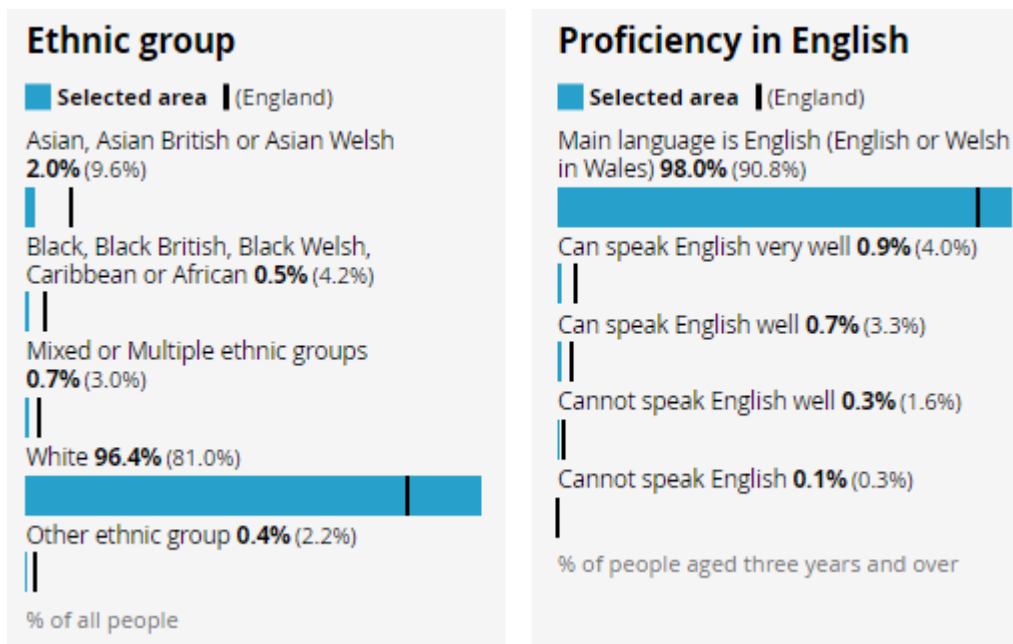
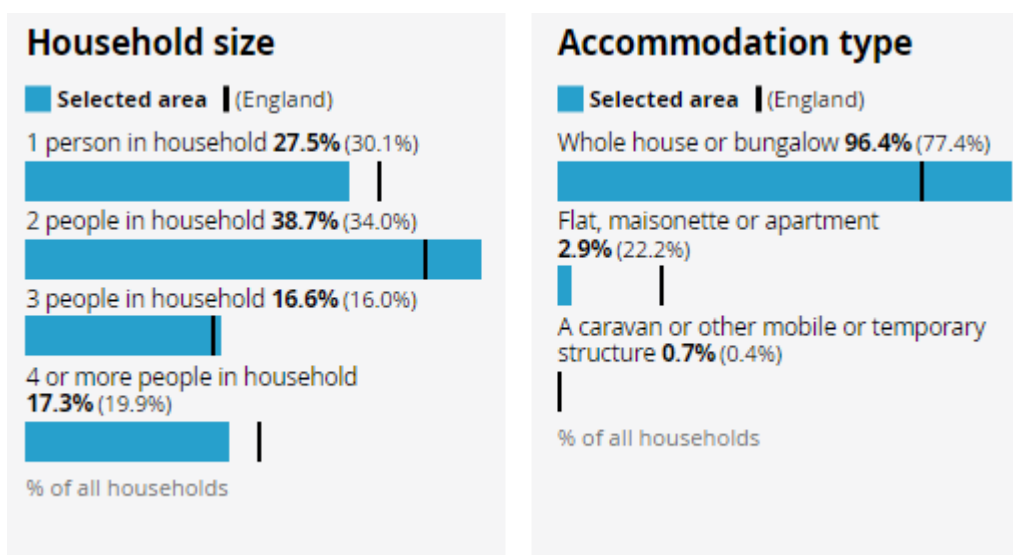


Figure 17. Edenthorpe Ethnicity & Proficiency in English profiles, (Office of National Statistics, 2021)

## Housing

Housing conditions and the surrounding environment can have profound impacts upon residents' health and exacerbate health inequalities. The data in figures below explores several variables to analyse the housing in Edenthorpe, this is important given its highly dense nature.

2021 census data shows that 9.2% of houses in Edenthorpe are socially rented, this is significantly lower than Doncaster (17.1%). The percentage of residents who own their home with a mortgage, loan or shared ownership stands at 34.6%. This is higher than Doncaster 29.6%. 96.4% of homes in Edenthorpe are whole house or bungalows, significantly higher than England (77.4%) and Doncaster (90.7%).



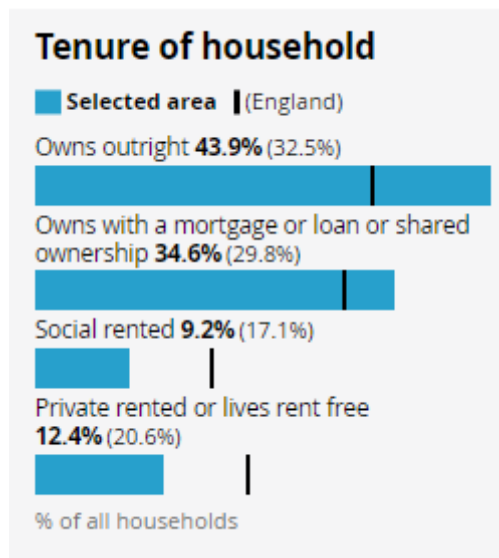


Figure 18. Housing profiles in Edenthorpe (Office of National Statistics, 2021)

In Edenthorpe 27.6% of residents live with 1 person in a household, fewer than England (30.1%) and Doncaster (31.2%). 38% of people live with 2 people within a household compared with England (34.0%) and Doncaster (35.2%). 16.8% of residents live with 3 people, slightly higher compared to England (16.0%) and Doncaster (16.4%). 17.6% live in a household with 4 people or more compared to 21.1% across England and 17.1% in Doncaster. In the household composition in Edenthorpe, 64.4% of residents live in a single-family household and is higher than England (63.0%).

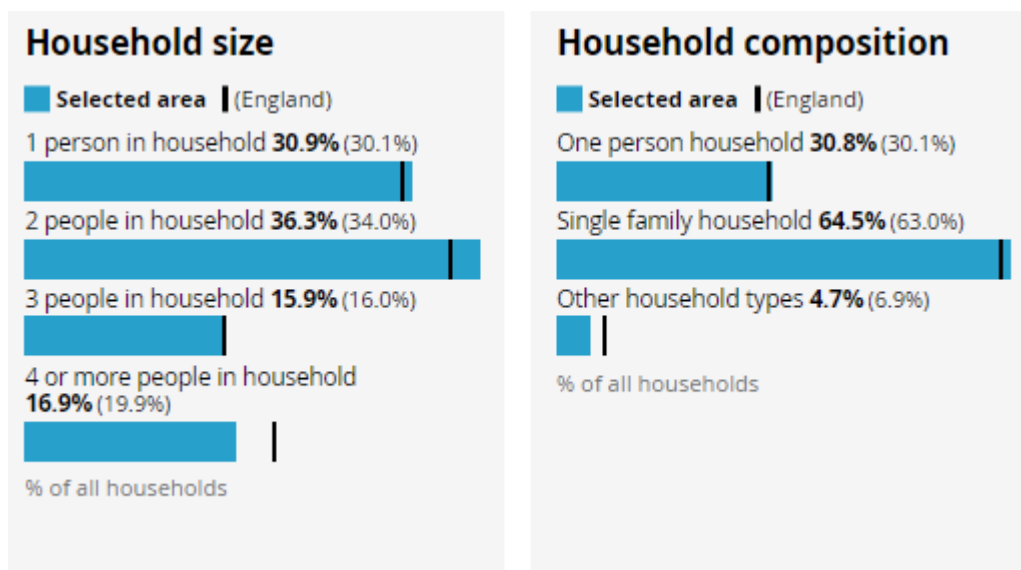


Figure 19. Edenthorpe household size/household composition (Office of National Statistics, 2021)

St Leger Homes manages social housing within Doncaster. There are 174 St Leger Homes properties in Edenthorpe. Edenthorpe has 50 one-bedroom bungalows and 8 flats. 22 St Leger properties are 3 bed houses and 61 are 2 bed bungalows. The total amount of rent arrears between fiscal years 2021-22 was £3,253, increasing to £5,538 in the following fiscal year 2022-23. Data is unavailable for this community from 2023.

## Community Safety

Community safety remains a top priority for residents and stakeholders across Doncaster. Feedback from a range of engagement activities consistently highlights concerns around anti-social behaviour (ASB), crime, and perceptions of safety. People want cleaner, more vibrant and welcoming neighbourhoods, supported by effective policing, youth engagement, and thoughtful environmental design.

To help achieve this, we're committed to a city-wide approach that combines proactive and reactive measures through a layered crime prevention strategy—primary, secondary, and tertiary—designed to make every community safer.

If you'd like to stay informed or take action, you can find detailed crime statistics for your neighbourhood at [www.police.uk](http://www.police.uk). To report issues or concerns, visit [www.yourlifedoncaster.co.uk/safer-city-how-to-report-issues](http://www.yourlifedoncaster.co.uk/safer-city-how-to-report-issues).

## The Safer Stronger Doncaster Partnership

The Safer Stronger Doncaster Partnership is working together to make Doncaster a safer, stronger place for everyone. The partnership focuses on six key priorities that tackle issues affecting our communities:



- **Reducing anti-social behaviour (ASB)** – making our streets and public spaces welcoming for all.
- **Reducing crime and re-offending** – supporting people to make positive choices and preventing repeat offences.
- **Tackling serious and organised crime** – protecting our communities from organised criminality and criminal networks.
- **Reducing substance and alcohol misuse** – helping people access support and reducing harm.
- **Tackling domestic and sexual abuse** – ensuring victims get the help they need and holding perpetrators to account.
- **Reducing violence and violent crime** – creating safer neighbourhoods for families and young people.

Together, these priorities aim to build a Doncaster where everyone feels safe and supported.

## Community Voice / Key Safety Concerns

East Doncaster (Armthorpe, Barnby Dun, Dunscoft, Dunsville, Edenthorpe, Hatfield, Hatfield Woodhouse, Kirk Sandall, Lindholme, Stainforth)

People in East Doncaster feel that anti-social behaviour is their biggest worry. Things like groups hanging around, street drinking, and feeling intimidated make some public spaces feel unsafe. Many residents are also concerned about fly-tipping and neglected areas, which add to the sense that the environment isn't cared for. There is a lack of confidence in reporting problems to the police because they fear nothing will change—or worse, that there could be retaliation. Despite these challenges, there's a strong sense of pride and resilience in the community. Residents want to see more visible action: quicker clean-ups, more patrols, and better communication so everyone feels listened to and supported.

## Crime and Antisocial Behaviour

Anti-social behaviour can be defined as when someone acts in a way that causes trouble, fear, or upset to others. This can include things like being noisy late at night, vandalism, or being aggressive in public. Hate crime is when someone is hurt or targeted because of their race, religion, disability, gender identity, or sexuality. It's not just a crime against one person, it can make whole communities feel unsafe.

Data provided by City of Doncaster Council (CDC) shows the number of vulnerable victims being supported in each locality. East locality has the highest number of vulnerable victims being supported in fiscal years 2023-24 (82).

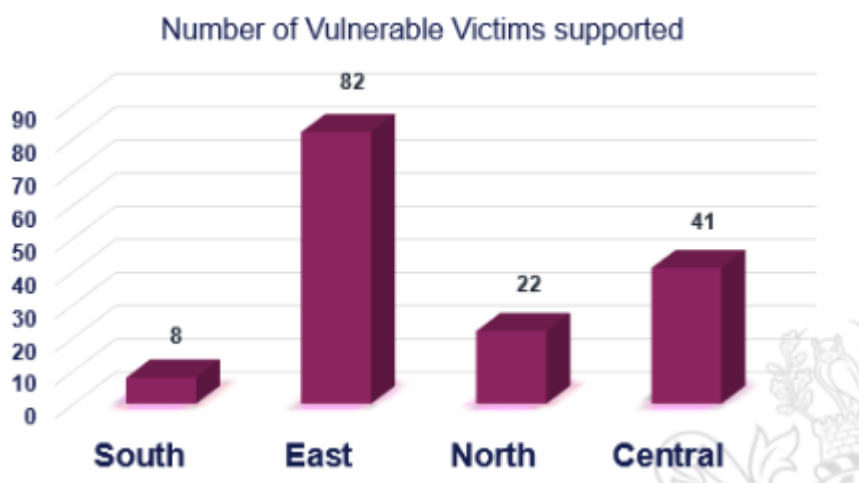


Figure 20. Vulnerable Victims by Locality (Partnership ASB ward level performance 2023/24) (City of Doncaster Council, 2024)

10 vulnerable victims within the East locality are from Edenthorpe and Kirk Sandall.



Figure 21. Vulnerable Victims by Locality (Partnership ASB ward level performance 2023/24) (City of Doncaster Council, 2024)

## Wellbeing Support

The Wellbeing service is one of the services delivered by City of Doncaster Council (CDC), the service supports residents with financial support, physical health, housing, mental health and social isolation, and an early intervention to prevent moving to adult social care services.

The table below shows data in the Edenthorpe and Kirk Sandall ward from the Wellbeing Service for fiscal years 2024/25. The main reason residents accessed the Wellbeing Service was for support with finances.

Quarter	Number of referrals	Male	Female	Top three themes each quarter
1	13	6	7	1.Housing & Living Environments 2.Financial 3.Physical Health
2	12	4	8	1.Financial/Physical Health 2.Housing & Living Environments 3.Environments (ASB)
3	20	6	14	1.Financial/Physical Health 2.Housing & Living Environment 3.Social Isolation/Mental health/Environment (ASB)
4	14	4	10	1.Financial 2.Physical Health 3.Housing & Living Environment

Table 7. Wellbeing Service referrals 2024/25 (City of Doncaster Council, 2024)

## Community Investment

In the East locality, the sum of investment in community organisations was £7.85 million, as of May 2024-25 (Doncaster Delivering Together, 2024-25).

Edenthorpe and Kirk Sandall ward has received £59.88K of investment which has supported community groups such as Eden G Community Gardens and Forged in Nature Forest School. The top three priorities for investment in the Edenthorpe and Kirk Sandall were: community spirit, financial security and community assets.

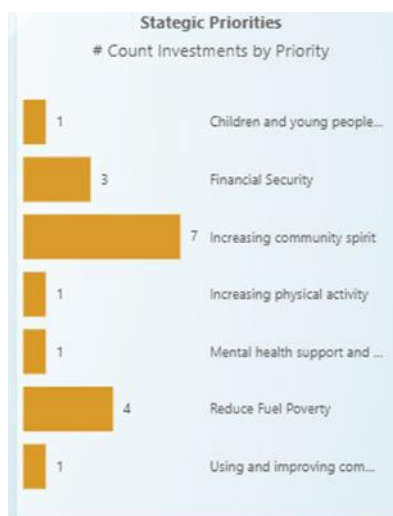


Figure 22. Community Investment Priorities for Edenthorpe and Kirk Sandall Ward, (Doncaster Delivering Together, 2025)

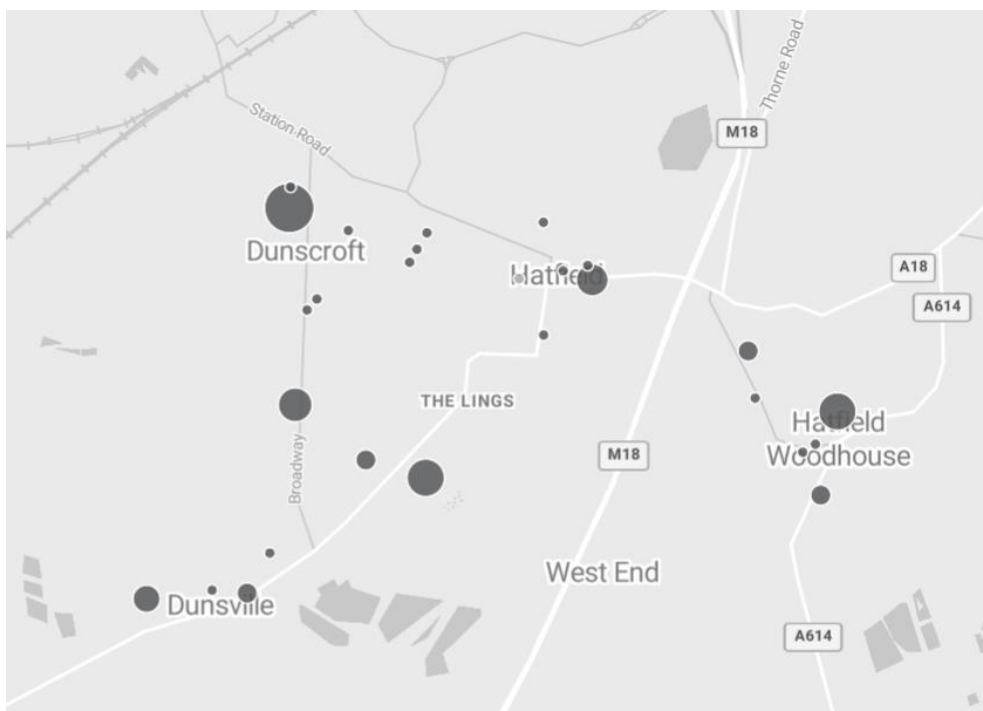


Figure 23. Postcode Map of Community Investment in Edenthorpe and Kirk Sandall Ward (Doncaster Delivering Together, 2025)



## References

Armstrong AJ, Holmes CM, Henning D. A changing world, again. How Appreciative Inquiry can guide our growth. *Social Sciences & Humanities Open*. 2020;2(1):100038. [oi:10.1016/j.ssaho.2020.100038](https://doi.org/10.1016/j.ssaho.2020.100038)

Michie S, Abraham C, Eccles MP, Francis JJ, Hardeman W, Johnston M: Methods for strengthening evaluation and implementation: specifying components of behaviour change interventions: a study protocol. *Implement Sci*.

## Appendix

### Well Doncaster

More information about Well Doncaster can be found on our website:

[Home | Well Doncaster](#)

### Census 2021

The census is undertaken by the Office for National Statistics every 10 years and gives us a picture of all the people and households in England and Wales.

[Build a custom area profile - Census 2021, ONS](#)

[Census Maps - Census 2021 data interactive, ONS](#)

### Public Health Data

#### Fingertips

This is a new fingertips profile that uses data from Local Health an existing PHE data tool. Local Health is a collection of quality assured health information presented for small geographical areas. By presenting data for small areas, Local Health provides evidence of inequalities within local areas. It supports targeted interventions to reduce such inequalities.

Local Health contains indicators related to:

- Population and demographic factors
- Wider determinants of health
- Health outcomes

It presents data for middle super output areas (MSOA), electoral wards, clinical commissioning groups (CCG), local authorities, and England as a whole.

Please note, as the Local Health tool was designed to allow users to map small area data, a mapping option has not been provided in this profile.



<https://fingertips.phe.org.uk/profile/local-health/data#page/0>

[Local Health - Public Health England - Reports: get a dashboard on a custom area](#)

Link to data- [Fingertips | Department of Health and Social Care](#)

Life expectancy and healthy life expectancy by ward: [Life expectancy by census ward](#)

Indices of Multiple Deprivation 2025 – statistical release, data files and reports: [English indices of deprivation 2025 - GOV.UK](#)

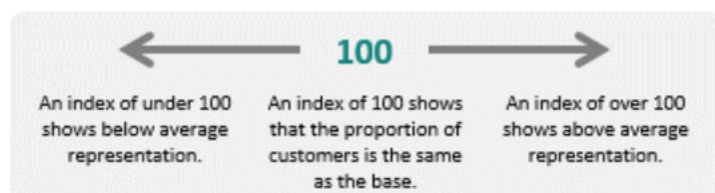
## Acorn profiles

Wellbeing Acorn segments the population into 4 groups (Health Challenges; At Risk; Caution; Healthy) and 25 types describing the health and wellbeing attributes of each postcode across the country. By analysing significant social and health related behaviour, it provides precise information and an in depth understanding of upstream issues affected by current lifestyle traits

## INTERPRETING THE REPORT

The Wellbeing Acorn profile report helps you understand the underlying demographics, lifestyle and health attributes of your customers and service users by comparing their Wellbeing Acorn profile to a base (e.g. UK population, area or other customer groups).

### INDEX



The Wellbeing Acorn Profile contains 12 variables that are indicators of Disability or Infirmary in the population and 9 variables related to unhealthy Behaviours. The average score measured against the base profile of Yorkshire and the Humber is 100. A value above 100 indicates that the area population is overrepresented for this characteristic, below 100 the value is less than the average or underrepresented.

## Physical Activity

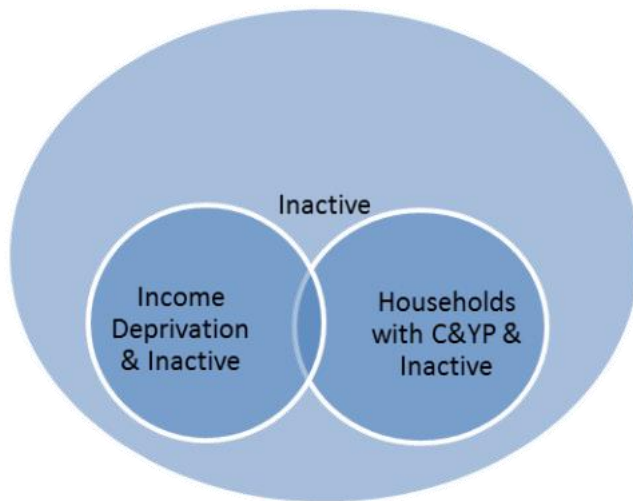
Get Doncaster Moving survey

<https://getdoncastermoving.org/uploads/behavioural-insight-phase-one-summary-report.pdf?v=1644581925>

### Mosaic data

Mosaic Public Sector classifies the UK population into one of 66 types and 15 groups through a detailed and accurate understanding of each citizen's demographics, lifestyles, behaviours and location.

The Physically Inactive Population of Doncaster



The MOSAIC types who “Do not exercise” and “Do not take part in Sport” were searched and three priority groups have been identified through work with strategic partners as part of the development of Doncaster’s Physical Activity Strategy. The three priority groups are:

- The Inactive
- Families with children and young people
- People living in income deprivation

These groups are cross-referenced against the inactivity list allowing for the identification of MOSAIC types which are both likely to be inactive and living in deprivation as well as inactive and from households with children and young people.

Link to the Get Doncaster Moving strategy; [Let's Get Moving! | Get Doncaster Moving](#)

### **Pupil Lifestyle Survey**

[Pupil Lifestyle Survey - Healthy Schools \(healthylearningdoncaster.co.uk\)](https://healthylearningdoncaster.co.uk)

### **Power BI – Joint Strategic Needs Assessment**

The Joint Strategic Needs Assessment (JSNA) is a process that identifies the current and future health and wellbeing needs of a local population. The dashboards show information about the employment, health, and wellbeing of people in Doncaster. We use this information to inform our policies and strategies to improve the lives of everyone in the Doncaster area.

[Joint Strategic Needs Assessments - Team Doncaster](#)

### **Community Safety**

The Safer Stronger Doncaster Partnership Community Safety Strategy can be found at - [The Safer Stronger Doncaster Partnership - City of Doncaster Council](#)

If you’d like to stay informed about crime and ASB in your community, you can find detailed crime statistics for your neighbourhood at [www.police.uk](http://www.police.uk).

If you would like further information about making Doncaster a Safer City please see - [Making Doncaster a Safer City - YourLifeDoncaster](#)

To report issues or concerns, visit [www.yourlifedoncaster.co.uk/safer-city-how-to-report-issues](https://www.yourlifedoncaster.co.uk/safer-city-how-to-report-issues)

## **Community Investment:**

Investment Map: [Doncaster Delivering Together Investment Plan - Team Doncaster](#)

## **Population Health Management**

Assets

Maps

### **Interactive Map**

To access and identify assets at ward and locality level please use the following interactive map: <https://www.google.co.uk/maps/d/viewer?mid=17BayPsljJ1OUq6U4OFbk9FKLYL2-wDZN&ll=53.50909620569456%2C-1.13650280000000032&z=14>

