



Wheatley Park Community Profile

Well Doncaster

Community Led Health and Wealth

Empowering people in Doncaster to live better, healthier, and happier lives.

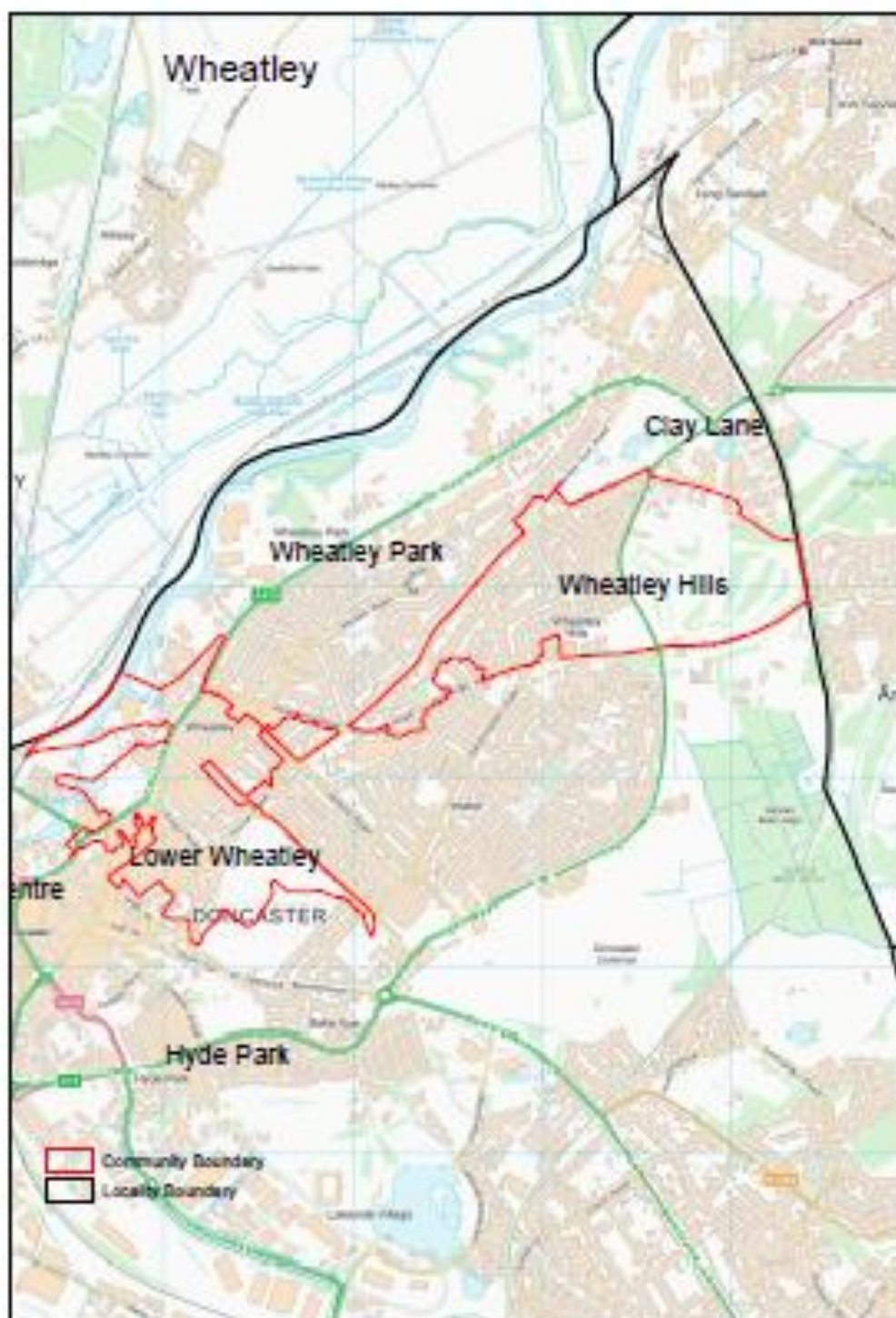
www.welldoncaster.uk

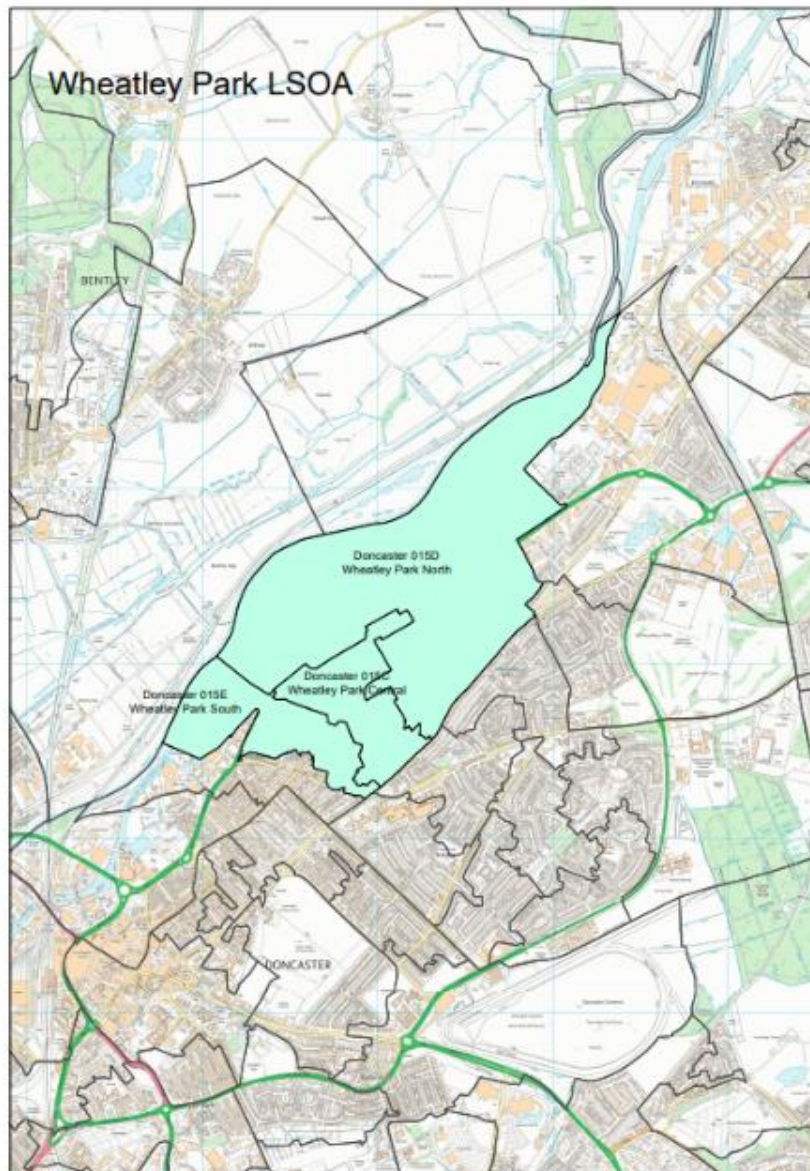
Well Doncaster
**Community
Wealth Builder**

Well Doncaster
Be Well



**City of
Doncaster
Council**





This Report

This report uses a population health management approach to looking at the health of a whole group of people such as a town, neighbourhood, or community—instead of just focusing on one person at a time. It is designed to help community leaders, services, residents etc. understand the strengths of both people and place, whilst also looking into what health challenges are common in that group, what services are needed most, and where help is lacking. By using data and trends, this Community Profile can inform tailored ways to keep people healthy, prevent illness, and make sure everyone gets the care they need. By focusing on prevention, early intervention, and coordinated care, together we can build healthier communities and support long-term, sustainable improvements in public health. The first Community Profile was written in 2023 and has been refreshed in 2025 to reflect the current opportunities and challenges of the community.

This report focuses on the community of Wheatley Park in the Central locality of the city. The report begins with a one-page summary outlining key information and priorities. This document shows the initial conversations with communities, including ward members, community organisations, faith groups, residents and other organisations who work in the area. Communities' knowledge of their own areas enables them to identify their strengths and the assets on which they can build upon. This document is shared with the intention of supporting those conversations and sharing information that might not be readily available to local people.

Wheatley Park is situated within the Intake and Wheatley electoral ward and comprises of 3 Lower Super Output Areas (LSOAs); Wheatley Park North, Wheatley Park Central, and Wheatley Park South, as shown in the map below. Data in this profile comprises of data at LSOA, community, or Ward level (covering the Intake & Wheatley ward) where available. To ensure each community is represented as accurately as possible, where possible, separate data and illustrations have been used. Data that is only available at ward level will be stated when included. Indirectly Standardised Ratios (ISRs) have been used throughout this document and have been used to compare data at community and ward level, against a reference population. ISRs show how often an event (such as deaths or hospital admissions) occurs in a population compared to what would be expected in a reference population, after adjusting for age differences. England is used as the reference population for ISR's throughout the document.

Contents

This Report.....	4
One Page Summary	8
Key Community Priorities.....	9
Assets	10
Asset Maps	10
Population Health Management	13
Assets in the Community.....	14
Community Insight.....	16
Appreciative Inquiry	16
Doncaster Talks.....	19
Ward Members.....	20
Health and Wealth	21
Deprivation.....	21
Wealth Inequalities.....	23
Fuel Poverty.....	24
Food Poverty	24
The Bread-and-Butter Thing	25
Employment.....	27
Citizens Advice Doncaster Borough.....	29
Health Inequalities	31
Life Expectancy	31
Long-Term Health Conditions	32
Incidence of Death	32
Alcohol	33
Smoking.....	33
Child Development.....	34
School Attainment.....	35
Pupil Lifestyle Survey	36
Family Hubs.....	37
Physical Activity	39
Physical Activity Children & Young People.....	39
Active Travel.....	40
Green Spaces and Parks.....	40
Community Information.....	41
Population.....	41
Demographics (Ethnicity, Language, and Religion)	42

Housing.....	43
Community Safety	45
The Safer Stronger Doncaster Partnership	45
Community Voice / Key Safety Concerns	46
Anti-Social Behaviour	46
Vulnerable Victims	47
Wellbeing Service.....	47
Community Investment.....	48
References	49
Appendix	50



Wheatley Hills



High
incidence
of lung
cancer and
COPD



1 in 4
children
living in
child
poverty



Circulatory
diseases
are the
leading
cause of
death



One quarter
of
households
contain 4 or
more people



24.6% of the
population
born outside
of the UK



33% of
population not
in
employment
and have
never worked

One Page Summary

Wheatley Park is part of the Wheatley Hill & Intake ward which consists of 4 communities: Wheatley Park, Wheatley Hills, Clay Lane, and Intake. It is located in the Central locality and has a population of approximately 6,400 (Census 2021).

The Index of Multiple Deprivation score in Wheatley Park is 36.15, which indicates that it is ranked the 21st most deprived community in Doncaster (out of 88). Within the 4 communities in the Wheatley Hills & Intake ward, Wheatley Park is the 3rd most deprived area. Census data (2021) shows a high number of residents that are not in employment: never worked in Wheatley Park (33.0%) compared to Doncaster (27.2%). 13.3% of residents are not in employment: not worked in the last 12 months, again higher than the Doncaster rate (11.2%). Those that are in employment in Wheatley Park are more likely to be in elementary or lower skilled roles, and less likely to be in managerial or professional professions.

Wheatley Park has a higher proportion of children and young people aged 0-14 years and adults aged 25–44 years, with a lower-than-average number of adults aged 50 years and above, and 15–24-year-olds compared to Doncaster. Approximately one quarter of households (23.7%) contain 4 or more people, higher than the Doncaster rate (17.1%). This aligns with the higher demographic of children and young people living in Wheatley Park.

In the Wheatley Hills & Intake ward, more than 1 in 4 children are classed as living in poverty (26.6%). This is higher than Doncaster (22.7%), and significantly higher than England (17.1%). 26.1% of children in Wheatley Hills & Intake are classified as overweight (including obese) in reception. This further increases to 39.2% in Year 6.

The leading cause of death in the Wheatley Hills & Intake ward is circulatory diseases at 154.7/100.0. Death from coronary heart disease, including other preventable diseases is also high. Incidence of lung cancer at ward level is significantly high and ranks amongst the highest rates across the city. Emergency hospital admissions for chronic obstructive pulmonary disease (COPD) and myocardial infarction (heart attack) are also high compared to Doncaster and England.

There is a higher incidence of alcohol specific admissions in some areas in Wheatley Park compared to the Doncaster average of 43.67 per 1000. At LSOA level, Wheatley Park Central (52.60 per 1000) and Wheatley Park North (55.31 per 1000) both have a higher incidence rate compared to Doncaster.

84.2% of the population in Wheatley Park are White, lower than the Doncaster rate of 93.1%. 6.8% of the population are Asian, Asian British, or Asian Welsh, higher than the Doncaster rate of 2.9%, and 6.2% of the population are of mixed or multiple ethnic groups, or of other ethnic groups. There is a higher prevalence of individuals of Muslim religion in Wheatley Park (7.8%) compared to Doncaster (2.2%).

Approximately one quarter of the population in Wheatley Park were born outside of the UK (24.6%), higher than the Doncaster rate of 10.4%. 17.4% of the population identify as non-UK citizens, compared to 7.0% in Doncaster. Furthermore, 1 in 5 residents are non-UK passport holders (19.2%), with a further 19.5% having no passport.

Key Community Priorities

- Circulatory diseases are the leading cause of death.
- Significantly high prevalence of lung cancer, high emergency hospital admissions for COPD and high smoking rates.
- High incidence of alcohol specific admissions compared to Doncaster.
- High rates of child poverty and high prevalence of overweight children (including obese).



Assets

Well Doncaster use a community centred approach which allows investment in supporting, working with, and empowering communities to facilitate a healthy community. The voice and role of our communities and taking a strength/assets-based approach to work with individuals, families and communities is crucial to the achievement of our overall vision. It is recognised that work is needed in the community to expand the understanding of who, how and what is accessed in the area. Greater knowledge of the identity of each community/ward will allow a more appropriate and effective response to community needs.

Asset Maps

The maps below show the different type of assets found across Wheatley Park. These have been separated into Business, Community, and Health assets. It should be noted that these maps are a starting point in understanding the community and that further work is needed amongst the community to understand all the assets and how they are used. These maps will be updated to highlight any changes.

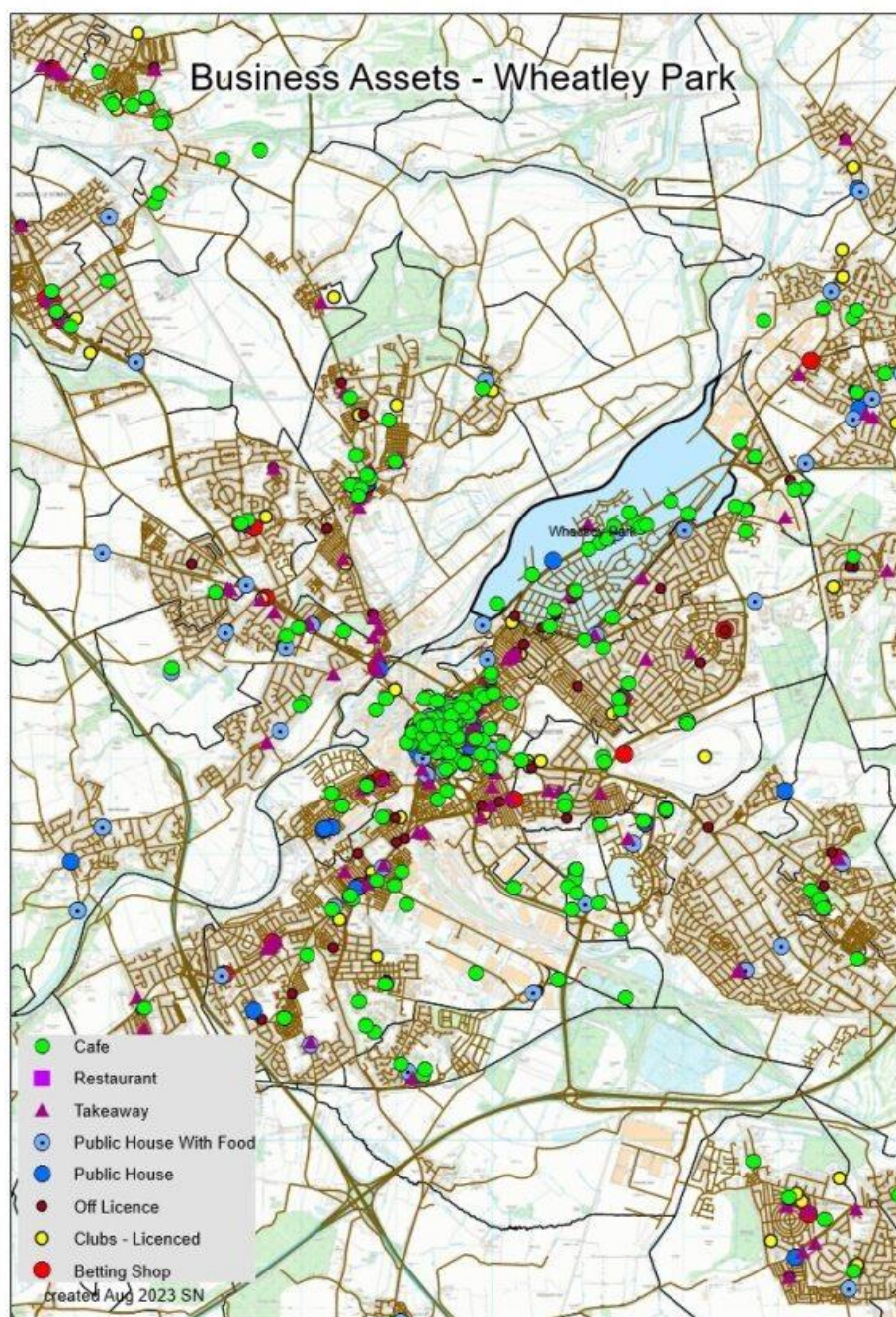


Figure 1. Business Assets in Wheatley Park, City of Doncaster Council, 2024

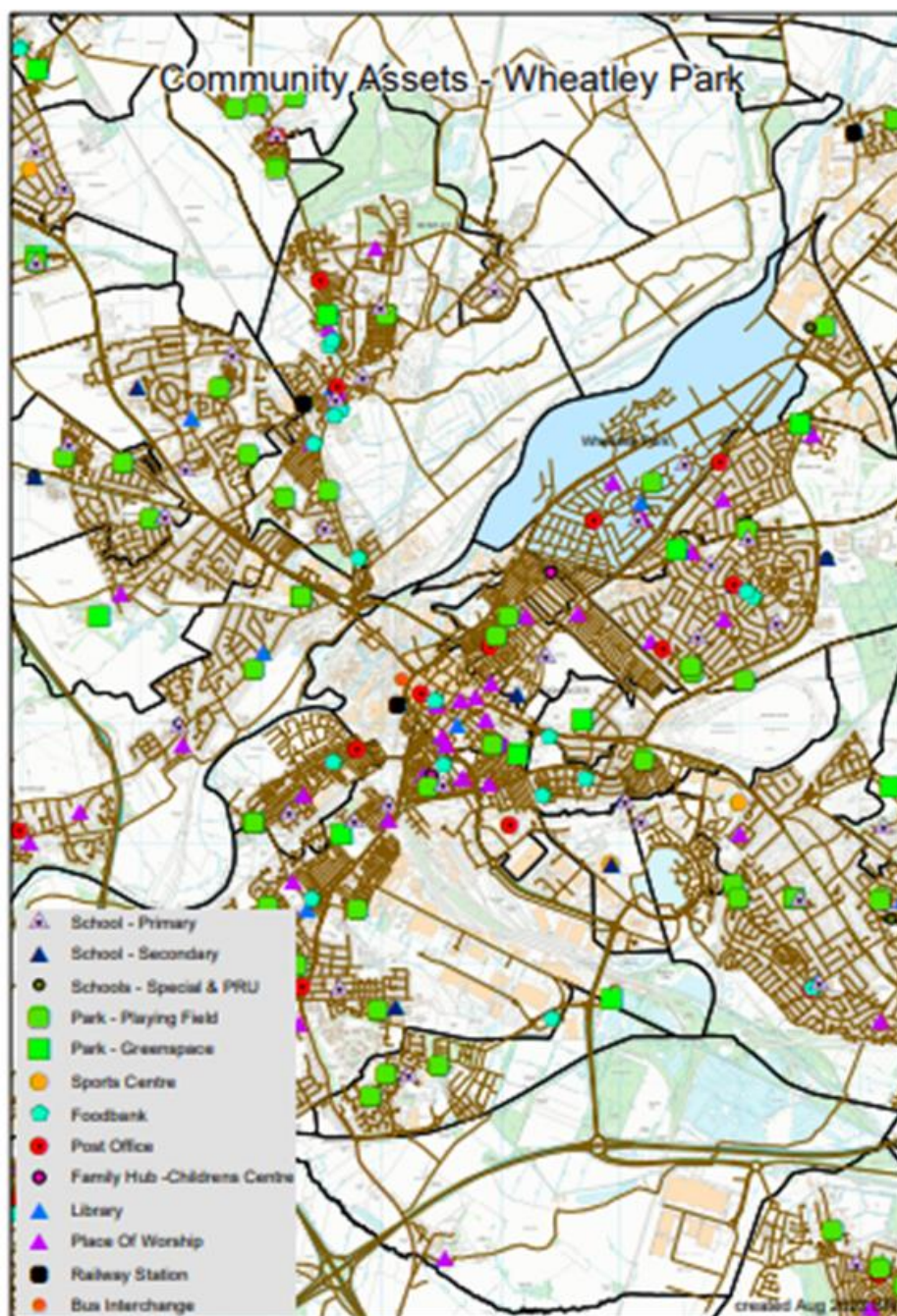


Figure 2. Community Assets in Wheatley Park, CDC (2024)

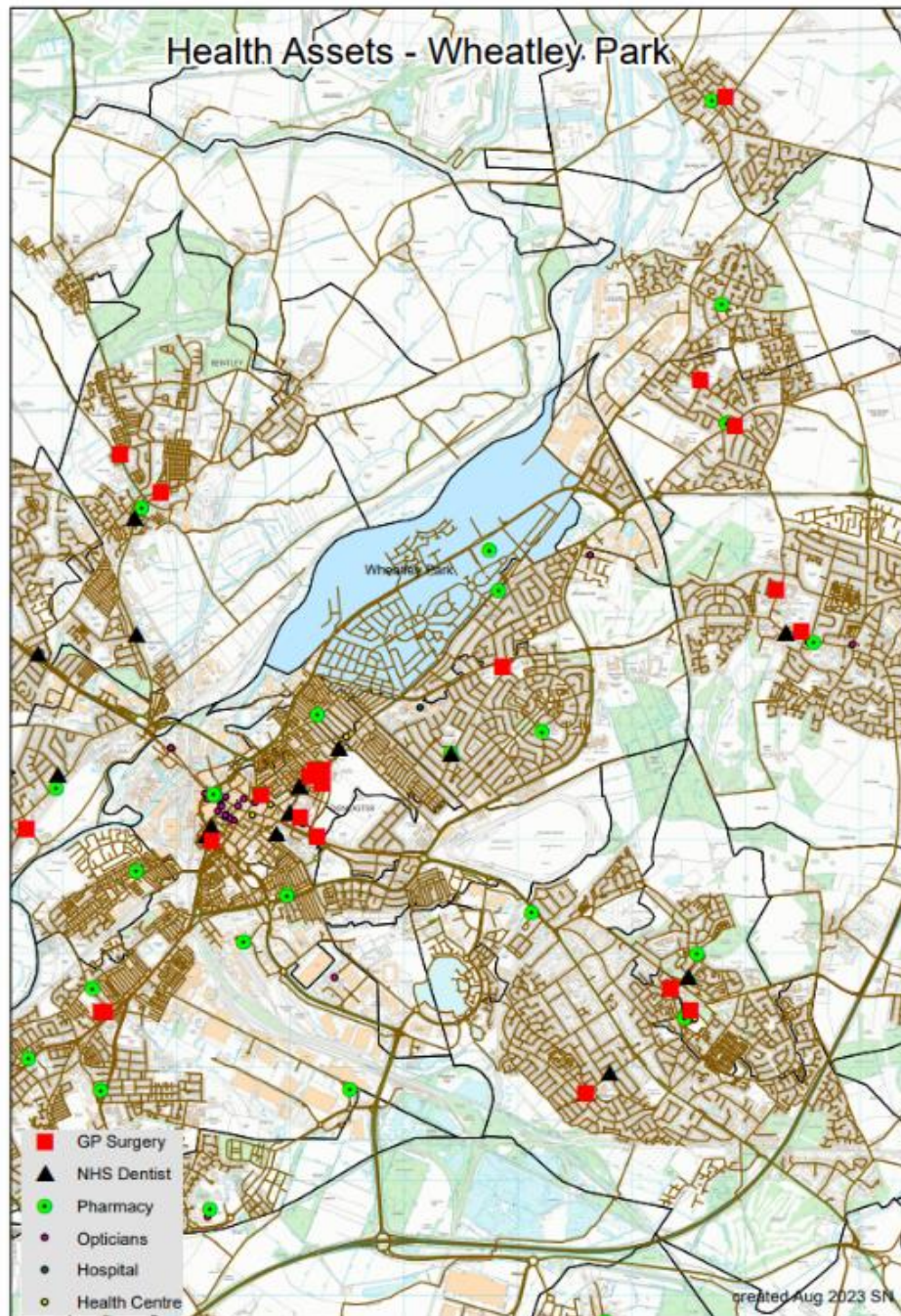


Figure 3. Health Assets in Wheatley Park, CDC (2024)

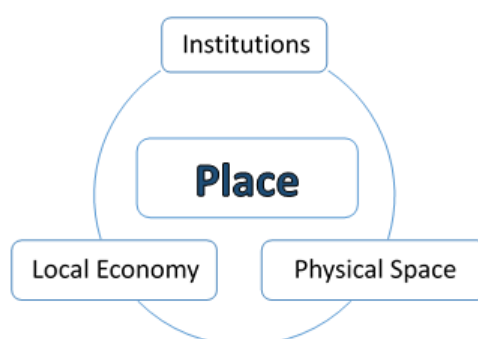
Population Health Management

It is vital to understand the impact on the community of nationwide influencing factors such as the COVID19 pandemic and cost of living crisis as well as local and regional

issues and opportunities. Understanding community organisations and other assets operating in the community helps up to ensure appropriate and targeted support can be offered, and work can be implemented to manage any gaps or risks associated with changes. Well Doncaster undertake regular population health management insight with community organisations in Wheatley, identifying their current status and needs, and work with each group and partners to meet their goals. This is a living document and will be updated and adapted as needs are met and change. If you would like more detail on this, please contact welldoncaster@doncaster.gov.uk

Assets in the Community

As part of a population health management approach, the following assets have been identified and themed around people and places:



WHEATLEY PARK		
Institutions (Schools/Colleges etc.)	Physical space (Parks, Carparks etc.)	Local Economy (Local Profit Businesses)
Education <ul style="list-style-type: none"> Kingfisher Primary School Park Primary School GPs <ul style="list-style-type: none"> Kingthorne General Practitioners Group The Mount Group Doncaster GP Out of hours Family Hub <ul style="list-style-type: none"> Wheatley Family Hub 	Buildings <ul style="list-style-type: none"> Wheatley Park Community Library St Pauls Community Church Community Action Network Gym Green Space <ul style="list-style-type: none"> Parkway South Green Sandall Park Parks & Playgrounds <ul style="list-style-type: none"> Parkway South Playground and Park Sandall park 	Shops/ Supermarkets <ul style="list-style-type: none"> Heron Food Stars Supermarket Aldi Tesco Express Post Office One Stop Wade Laundrettes Wheatley Hall Shopping Park Barnardo's Kwik Fit Dulux Decorator Centre Wilson's carpets Dunelm



Individuals (Key Individuals Identified within Wheatley Park)	Associations (Local Community Groups)
<ul style="list-style-type: none"> • Ward Members <p>Community Leaders:</p> <ul style="list-style-type: none"> • Volunteers in VCFS Sector <p>Professionals:</p> <ul style="list-style-type: none"> • Well Doncaster Officer • Be Well Officer • CDC Communities Team • Police Community Support Officer • St Leger Homes 	<p><u>Community Groups and TARA's</u></p> <ul style="list-style-type: none"> • Wheatley Park Community Action Network (CAN) <p><u>Voluntary & Faith</u></p> <ul style="list-style-type: none"> • St Paul's Community Church • Wheatley Park Baptist Church • Doncaster Evangelical Church <p><u>Foodbanks & Support</u></p> <ul style="list-style-type: none"> • Doncaster Foodbank (Every Tuesday, St Pauls Community Church, 10am-2pm) • Citizen Advice Bureau (as above) <p><u>Sports clubs:</u></p> <ul style="list-style-type: none"> • Doncaster Martial Arts Centre • Danum ABC • Parklands Sports & Social Club • Wheatley Golf Club • Wheatley Hills RUFC <p><u>Children and Young People</u></p> <ul style="list-style-type: none"> • J & D Activities

Community Insight

Appreciative Inquiry

Appreciative Inquiry (AI) is a strength-based approach to understanding what is working well. It involves asking a series of structured questions which are analysed to identify themes that can be used to create positive change. The questions seek to understand past and present successes to help plan and create a bright and positive future. Used in a community setting, the process consists of four phases:

1. **Discovery Phase** – This will involve engagement with the residents to find out what is working well in the community. Responses will be themed to allow priorities of the community to be established.
2. **Dream** – Residents and key stakeholders will be invited to attend an initial workshop to discuss what ideas they have for their community and how these will meet the priorities highlighted in the discovery phase.
3. **Design** – All attendees are invited back for a second workshop to develop an action plan for community action.
4. **Deliver** – A collaborative way of working and investing resources in working towards the actions from the design phase.

The Well Doncaster Team undertake Appreciative Inquiry every year to ensure the voice of the community is heard, understood and fed into local decision making. Armstrong (2020) demonstrates, through appropriate questioning, appreciative inquiry can help us move away from focusing on negatives and capitalise on community strengths to be used as assets for community development. As communities look for the positives in their future, residents can be inspired to take ownership of their community and act.

Insight from Wheatley Park has been gathered through multiple resident engagements including community events, Positive Action Groups (PAGS), conversations in collaboration with Get Doncaster Moving including the Future Parks Survey and resident pop ups. The table below is the thematical analysis of all insight from residents in Wheatley Park up to 2025.

THEME	SUB THEME	QUOTE	COMMENTARY
Community and Social Connections	Friendly Neighbours and Community Spirit	"We have nice neighbours and regular litter picks, the litter picks are working well" (ID4)	The community's spirit is a cornerstone of its strength. Residents feel connected through shared activities, mutual respect, and a willingness to help one another. This social fabric not only enhances quality of life but also acts as a buffer against isolation and adversity.
		"Good Neighbours" (ID3)	
	Volunteering and Events	"Neighbours are nice and friendly" (ID12)	

		<p>"The community is coming together" (ID20)</p> <p>"Good community spirit" (ID34, ID44, ID5461)</p> <p>"Community support and always someone to talk to." (ID5085)</p> <p>"There are lots of nice people within my community. I have people I can talk to and rely on." (ID5459)</p> <p>"Volunteers" (ID10)</p> <p>"Community projects are free to families, Wheatley Wombles, Community Litter picks" (ID22)</p> <p>"Street based community events" (WP1)</p> <p>"Volunteering groups, community groups, Sandall Park." (WPP4)</p>	<p>The community demonstrates strong social cohesion and mutual support, with many residents valuing their neighbours and the sense of belonging.</p> <p>Volunteering and community events are active and inclusive, fostering engagement and pride.</p> <p>The presence of support networks and friendly interactions contributes to emotional wellbeing and resilience.</p>
Access to Nature and Green Spaces	<p>Parks and Woodlands</p> <p>Activities and Recreation</p>	<p>"The parks, community, people, Nice green spaces, clean parks" (ID10)</p> <p>"Being so close to Sandall Beat Woods" (ID14)</p> <p>"Town Fields is a great open space and Sandall Park" (ID5223)</p> <p>"Sandall Beat Woods. Grove Park, play park and swings for children" (ID5676)</p> <p>"Local park to play on scooter. Skate Park. Basketball courts & football pitches." (ID5148)</p> <p>"Loads of activities close by - sports, basketball & football." (ID5310)</p> <p>"Zipline there, children to play with, places to play football." (ID5543)</p>	<p>Nature is a vital asset in this community, offering spaces for exercise, play, and tranquillity. The widespread appreciation for these areas reflects a community that values environmental quality and outdoor living, which supports holistic wellbeing.</p> <p>The area is rich in accessible parks and woodlands, which are well-utilized for recreation, relaxation, and social interaction.</p> <p>Green spaces are described as clean, peaceful, and inviting, contributing to both physical and mental health.</p> <p>Opportunities for family-friendly and youth-oriented activities are abundant.</p>
Safety and Crime Concerns	<p>Anti-Social Behaviour and Crime</p> <p>Policing and Cleanliness</p>	<p>"ASB makes me frightened to go out in the evening" (ID29)</p> <p>"Flats are a bit scary", "ASB and crime", "don't feel safe" (ID11)</p> <p>"People don't come to the park due to drug dealers" (ID17)</p> <p>"Flat complex full of druggies", "drugs everywhere" (ID37)</p> <p>"PCSO in area, need to be visible" (ID5)</p> <p>"Would be nice if more policing of the park" (ID20)</p>	<p>While safety concerns exist, the community's response is rooted in resilience and advocacy. The willingness to speak out and seek solutions reflects a population that cares deeply about its environment and is committed to positive change.</p> <p>Despite challenges, residents are proactive in reporting issues and advocating for improvements.</p> <p>There is a desire for safer environments, indicating a strong sense of ownership and responsibility.</p>

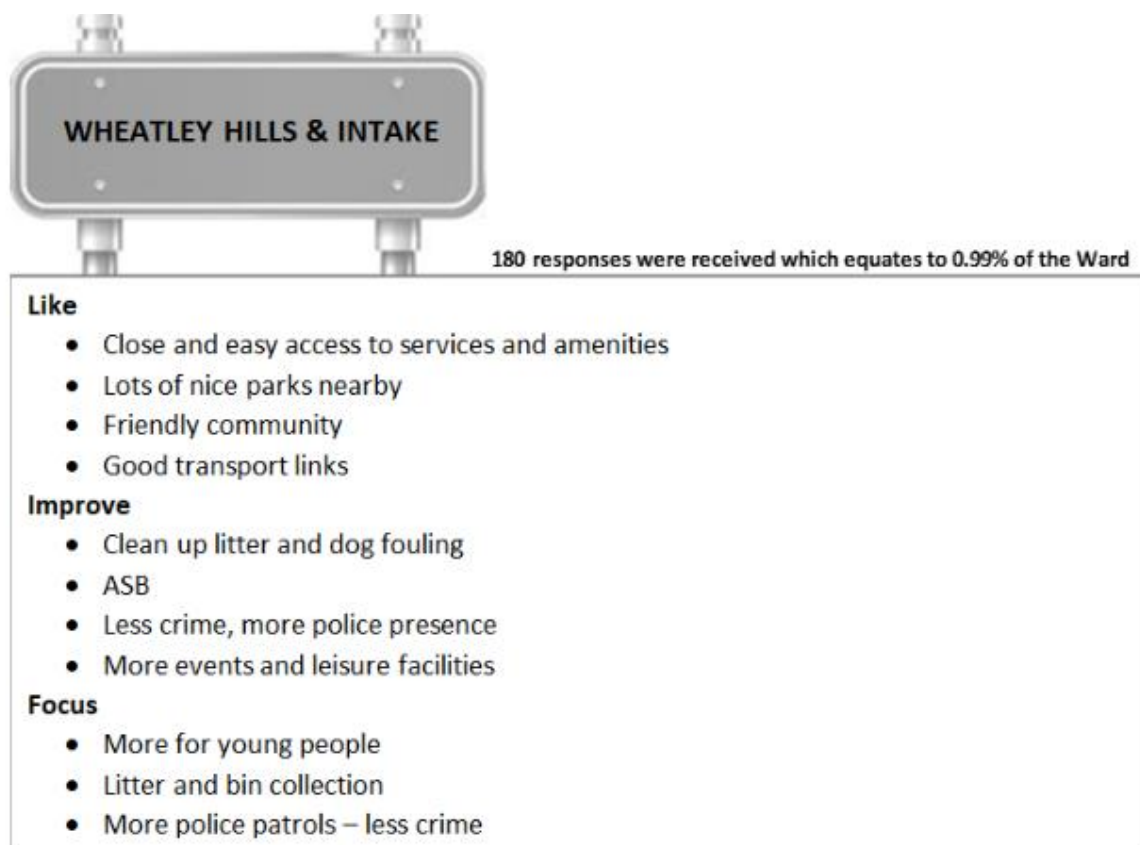
		"No bins, constant littering" (ID33)	Community members express awareness and vigilance, which are key to fostering long-term safety.
Health and Wellbeing	Physical and Mental Health Access to Services	<p>"Helps with having a stroke, independence and prevents isolation" (ID30)</p> <p>"I come to walking football for fitness, the social side and to get out of the house." (ID5158)</p> <p>"To keep a better level of mobility and to meet like-minded people socially." (ID5168)</p> <p>"Being able to see a doctor when I need one, but can't always get one" (WHP2)</p> <p>"No mental health services, I feel isolated" (SID33)</p> <p>"I like St Pauls foodbank as it helps me eat" (ID37)</p>	<p>Health and wellbeing are actively nurtured through community engagement and personal initiative. The presence of inclusive services and the pursuit of active lifestyles demonstrate a community that values vitality and supports its members in staying well.</p> <p>Residents engage in activities that promote physical and mental health, such as walking football, church groups, and exercise in parks.</p> <p>There is a strong emphasis on independence and self-care, even among those facing health challenges.</p> <p>Community services like foodbanks and drop-in centres provide essential support and connection.</p>
Facilities and Accessibility	Proximity to Amenities Youth and Community Services	<p>"It's close to town centre" (ID12)</p> <p>"Tesco is close by, which is convenient" (WHP3)</p> <p>"It is close to the city centre so being disabled I am able to get here on my scooter." (ID5679)</p> <p>"Youth club at the Evangelical Church" (ID42)</p> <p>"Good in the past as there were youth clubs and activities" (ID24)</p> <p>"The library in Intake also has a few activities" (ID5224)</p>	<p>Accessibility is a major strength, enabling residents to meet their daily needs with ease. The integration of services within walking distance supports independence and fosters a sense of empowerment across age groups.</p> <p>The area offers excellent access to amenities, including shops, transport, schools, and healthcare.</p> <p>Youth services and libraries are appreciated for their role in education and recreation.</p> <p>Proximity to the town centre enhances convenience and connectivity.</p>

Social Inclusion and Belonging	Reducing Isolation	<p>"Helps me not be alone" (ID6)</p> <p>"Stops isolation and being burden on my family" (ID31)</p>	<p>Inclusion is deeply embedded in the community's ethos. Whether through faith groups, recreational activities, or informal support, residents find ways to connect and contribute. This inclusive culture strengthens resilience and promotes mental wellbeing.</p> <p>Many residents find purpose and connection through social groups, churches, and community activities.</p> <p>There is a clear emphasis on reducing isolation, especially for vulnerable individuals.</p> <p>Opportunities for meaningful engagement help people feel valued and included.</p>
	Social Engagement and Purpose	<p>"Sense of community makes me feel included" (ID4568)</p> <p>"I attend the Evangelical Church to meet people" (ID30)</p> <p>"To do something I love and meet new people." (ID5171)</p> <p>"Great fun, good for my health. Love the game - makes me buzz to be playing at my age." (ID5162)</p>	

Table 5. Thematic Analysis Framework of Community Insight 2025

Doncaster Talks

In 2019, Doncaster Talks undertook an insight across the City of Doncaster. Responses were separated into wards and thematically analysed. Across the Wheatley Hills & Intake ward, 180 responses were received which equates to 0.99% of the ward. An overview of themes can be seen below.



Ward Members

Below are the Ward Members for Wheatley and Intake ward following elections in 2025.



Councillor Guy Aston
Wheatley Hills and Intake
Reform UK
Reform Group Leader



Councillor Paul Cutts
Wheatley Hills and Intake
Reform UK



Councillor Jane Kid
Wheatley Hills and Intake
Labour and Co-operative
Party



Health and Wealth

Health inequalities are avoidable differences across the population and between different groups within society. Health inequalities arise from the conditions in which we live, work, and play. These conditions influence our opportunities for good health, how we think, feel, and act, therefore shaping our health and wellbeing.

Deprivation

Evidence shows that people living in our most deprived areas face the greatest health inequalities in relation to health access, experiences, and outcomes. Deprivation covers a range of issues and refers to unmet needs caused by a lack of resources, including but not limited to finances, housing, and education. It is measured in different ways including the Indices of Multiple Deprivation (IMD). Doncaster is within the 10% of most deprived communities in England.

The map below shows the national IMD Deciles across Doncaster by LSOA. Areas in red indicate higher levels of deprivation. New data for 2025 shows that the IMD score in Wheatley Park is 35.55 ranking 22nd out of 88 communities in Doncaster for deprivation.

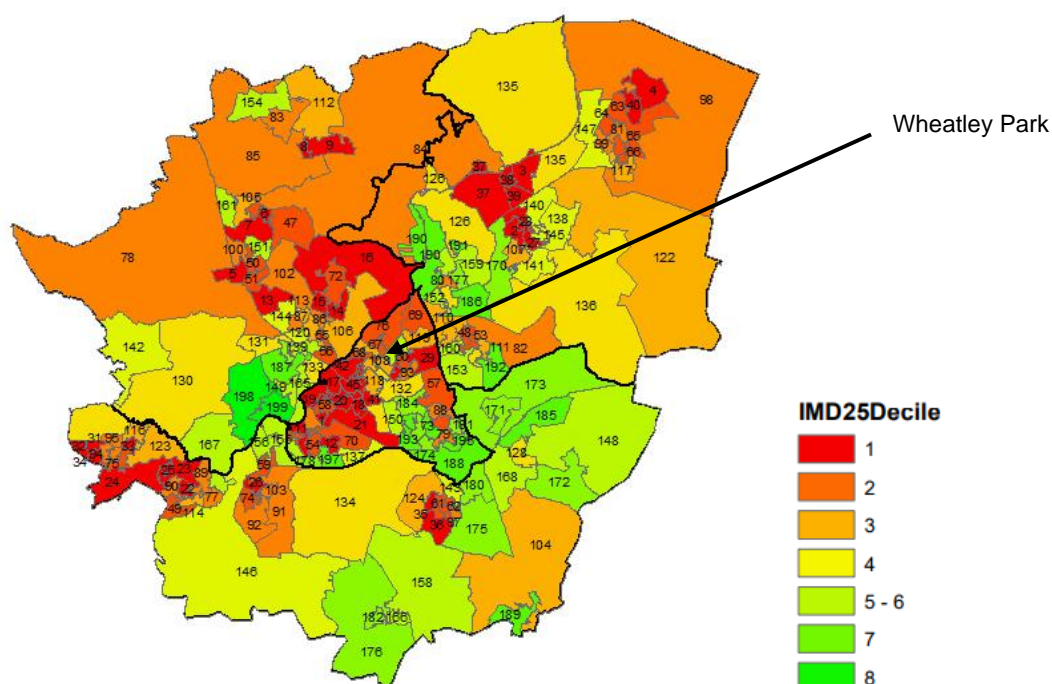


Figure 4. Index of Multiple Deprivation Deciles by LSOA – Doncaster, Office for National Statistics ONS, 2025

The 2021 Census data has been used to produce estimates that classify households in England and Wales by four dimensions of deprivation: Education, Employment, Health and Housing. This information is then broken down into household deprivation within Wheatley Park compared to Doncaster. Wheatley Park has a higher rate of

households that are deprived in one or three dimensions and a lower prevalence of households that are not in any level of deprivation. Figure 6 shows household deprivation in one dimension. The darker colour represents higher prevalence of deprivation.

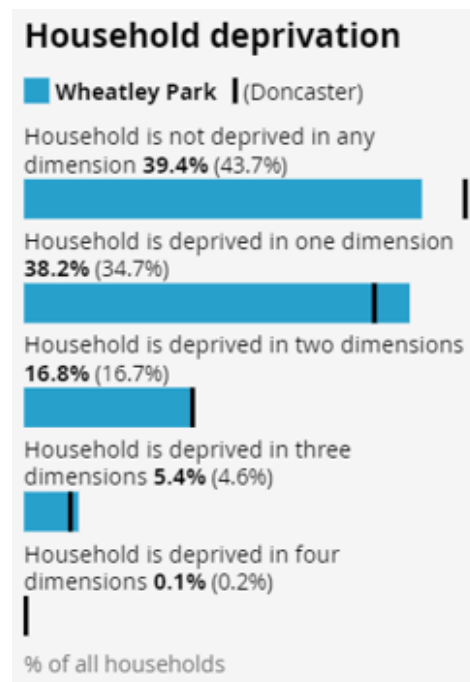


Figure 5. Household Deprivation in Wheatley Park, ONS, 2021

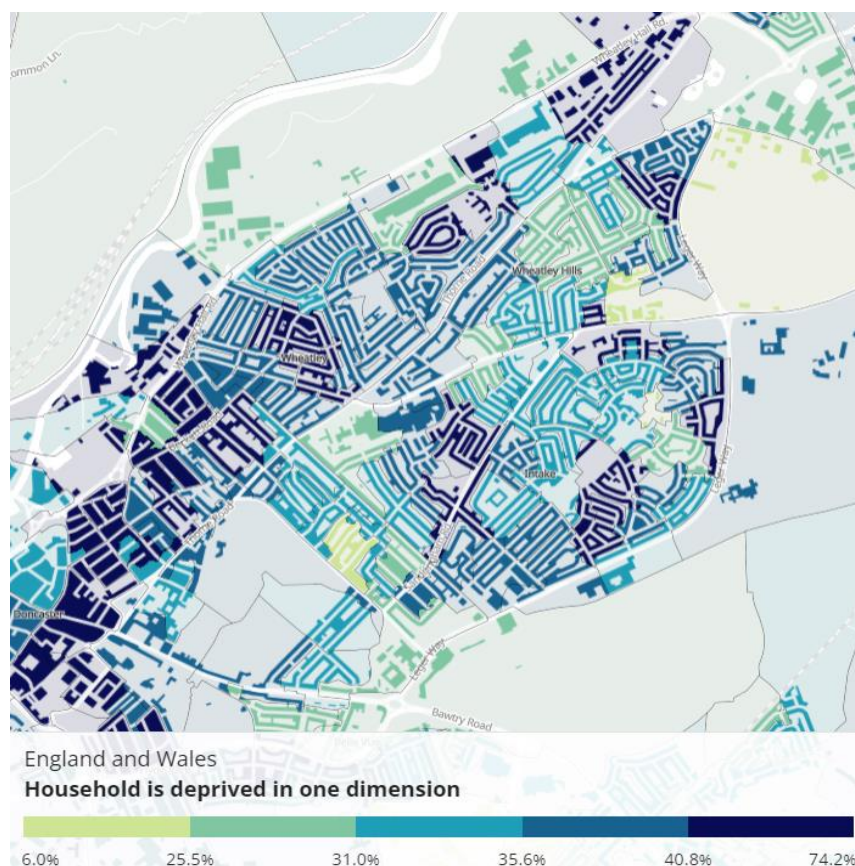


Figure 6. Household Deprivation in One Dimension, ONS, 2021

Wealth Inequalities

In 2025, of 35.3% Wheatley Hills Middle-layer Super Output Area (MSOA) residents are experiencing poverty, similar to the Doncaster average of 29.3%. This is a significant increase from 2019, where 17.9% of Wheatley Hills MSOA residents were living in poverty.

The proportion of older people in poverty in Wheatley Hills MSOA (22.4%) is higher than the Doncaster rate (19.4%), similarly to all people, this has increased (from 18.3%) since 2019.

Furthermore, 56.3% of children are living in poverty, higher than the Doncaster average (47.1%), an increase from 22.4% in 2019.

When considering the change from 2019 to 2025 data, it is important to note that there have been changes to the calculation of the source data, the income deprivation domain in the Indices of Multiple Deprivation. While it can be inferred that there has been an increase in the proportion of people living in poverty, the changes in this indicator may contribute to the significance of this change.

At community level, the data differs, with 40.4% of Wheatley Park residents experiencing poverty, 28.6% of older people and 61.5% of children.

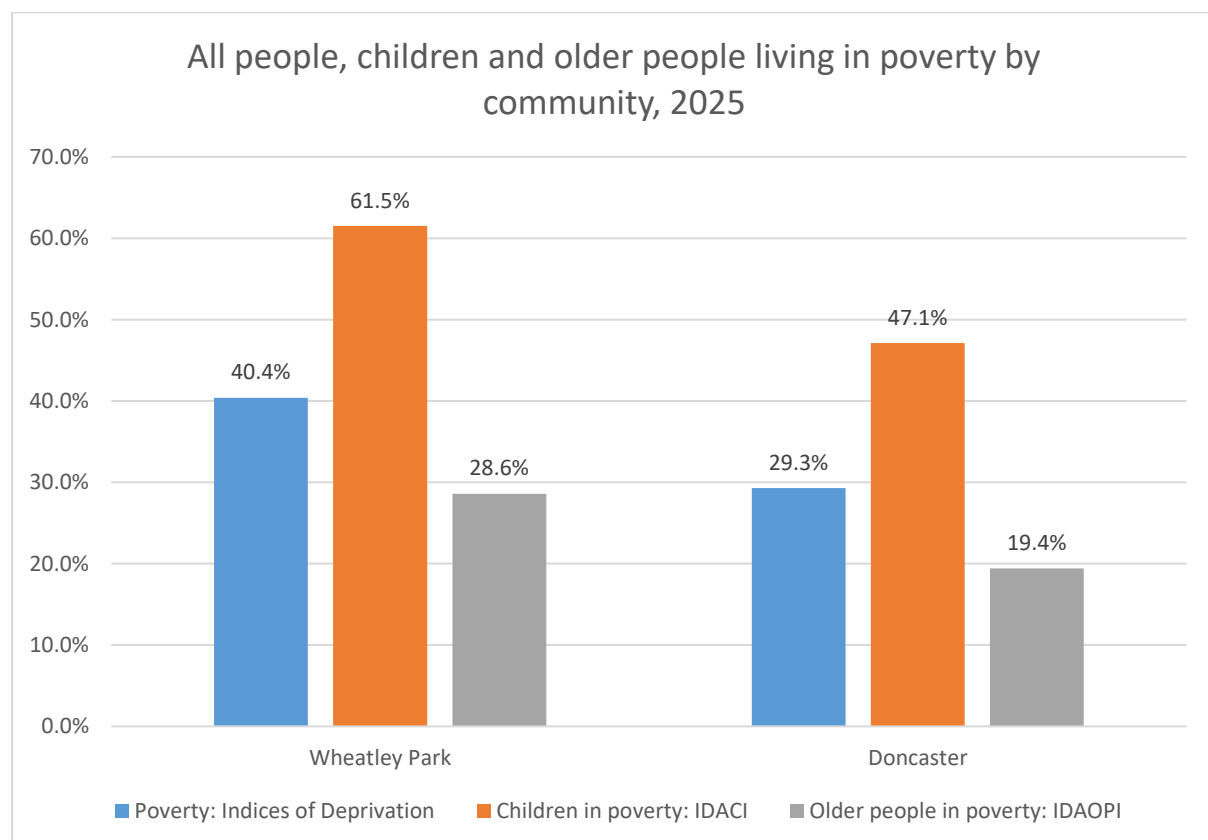


Figure 7. Poverty Prevalence using IMD25, ONS, 2025

Fuel Poverty

Fuel poverty is directly linked to energy efficiency, energy prices and household income. Fuel poverty is distinct from general poverty: not all poor households are fuel poor, and some households would not normally be considered poor but could be pushed into fuel poverty if they have high energy costs. Evidence shows that living in cold homes is associated with poor health outcomes and an increased risk of morbidity and mortality for all age groups. Furthermore, studies have shown that more than one in five (21.5%) excess winter deaths in England and Wales are attributable to the coldest quarter of housing.

Modelled estimates of the proportion of households in fuel poverty shows that 18.8% of households in Doncaster are living in fuel poverty. At a ward level, 21.8% of households in the Wheatley & Intake ward are experiencing fuel poverty, higher than the Doncaster (18.8%) and England (13.2%) rate.

Figure 8 outlines fuel poverty levels across the city of Doncaster, with Wheatley Hills and Intake ward experiencing the 7th highest levels.

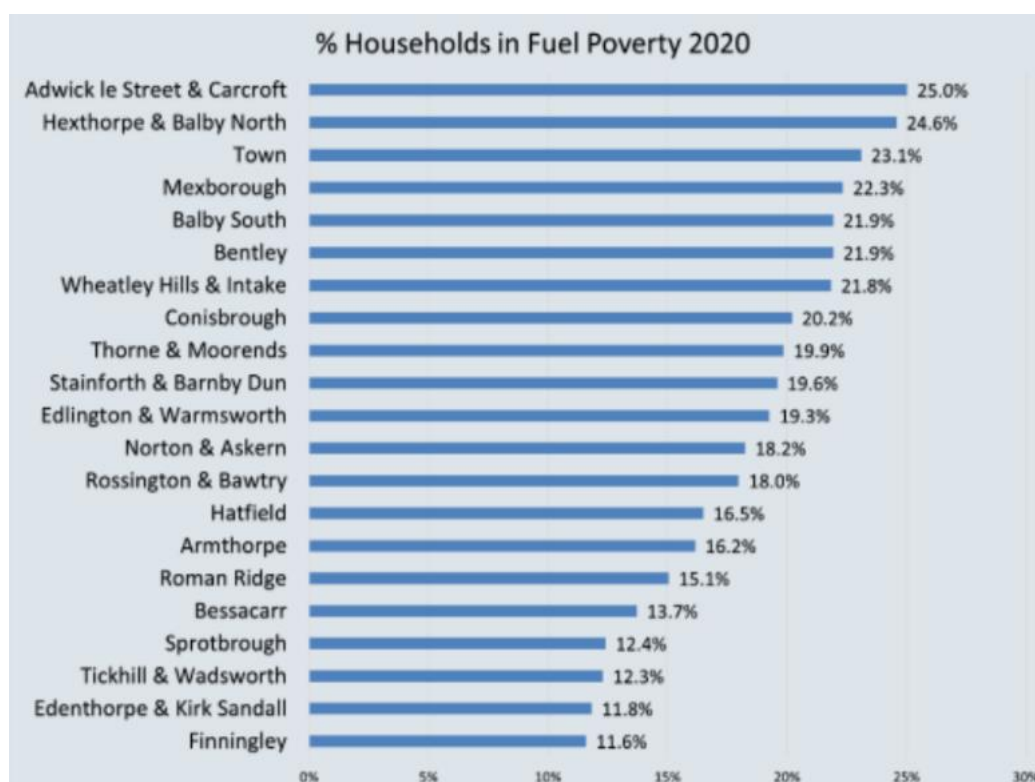


Figure 8. Percentage of Households in Fuel Poverty by Ward, ONS, 2020

Food Poverty

There are 7 active foodbanks in the Central locality of Doncaster. Across fiscal years 2024-2025, Central foodbanks supported 5102 individuals, 2333 single parents, 4170 families, 1488 couples and 91 'other,' and ranked as the highest locality for relative level of foodbank support. The most recent data from 2025 shows that across the Central foodbanks the highest number of people supported by type, were individuals

and single parents. This has changed from fiscal year 2024-2025 data where there were significantly more couples seeking support. The table below shows the count and type of residents supported throughout 2024-2025.

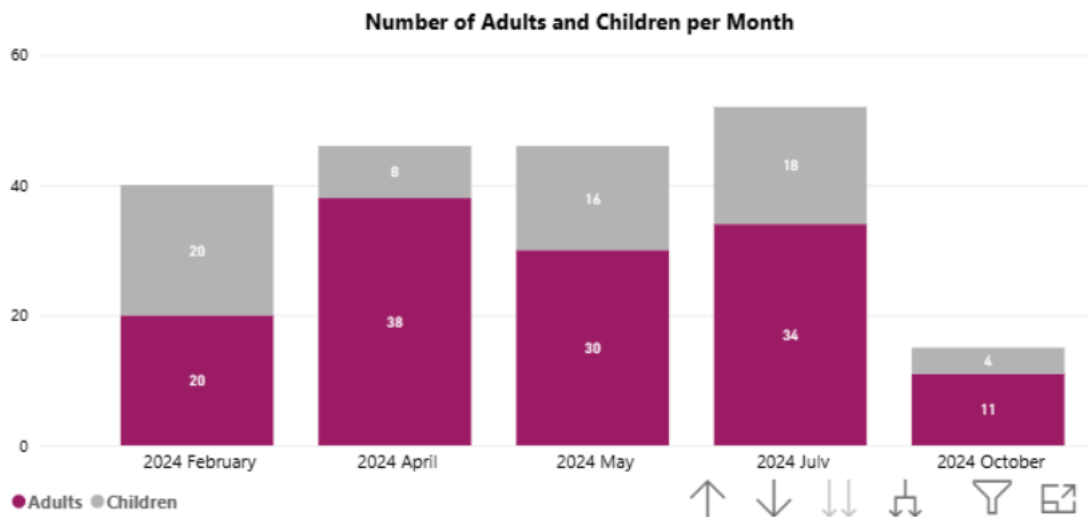


Figure 9. Number of People Accessing Central Foodbanks, City of Doncaster Council, 2025

The closest foodbank to residents in Wheatley Park is located at St Paul’s Church in Wheatley Hills. The most recent foodbank data from 2025 shows the top five reasons for accessing foodbanks across the borough are: cost of living (602 residents), low income (524 residents), benefits delay (468 residents), debt (456 residents) and benefit changes (447 residents). Figure 10 shows a tree map chart showing an overview of the reasons residents are requiring foodbank support.

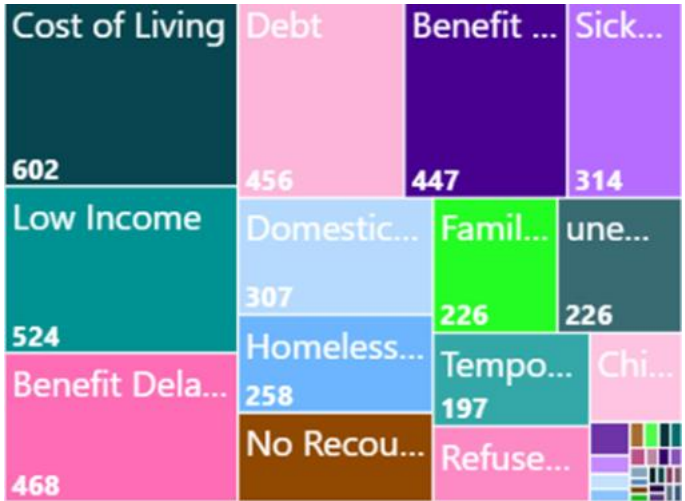


Figure 10. Reasons Residents are Accessing Foodbank Support, City of Doncaster Council, 2025

The Bread-and-Butter Thing

There are five The Bread-and-Butter-Thing (TBBT) hubs based in the following communities across the borough: Mexborough, Rossington, Carcroft, Thorne and Hexthorpe. Each site offers up to 80 residents the opportunity to access affordable

food, ensuring 400 residents per week get the help they need. The purpose is to reduce poverty premiums that families in low-income areas can face, to reduce waste by identifying edible surplus food in the UK food sector and redistributing it and to build resilience within the communities.

The mobile food hub gives access to nutritious and affordable food taken into the heart of communities starved of money, food, and resources. The food parcels are based on a weekly shop providing essential produce for families including fresh fruit and veg, chilled goods and cupboard staples. By discounting a family's shopping, a members average weekly saving is £26.50.

The King's Cross Church in Hexthorpe operates the only TBBT in the central locality. TBBT provides residents with food parcels from surplus food at an affordable price and aims to help people move up the food ladder by acting as a financial bridge and helping with cost of living. Although TBBT is not close to residents in Wheatley, it's open to any residents in Doncaster and may provide support to people from postcodes boroughwide.

In 2024 across the five sites, 3241 residents accessed TBBT, and 1596 volunteering opportunities were filled. Figure 11 shows the postcode areas of residents in Central Doncaster accessing TBBT throughout fiscal year 2024/25 and indicates dense clusters in areas of higher deprivation including Intake, Wheatley, City Centre, Clay Lane, Hexthorpe, and Balby, with some postcodes accumulated in less deprived areas such as Cantley and Bessacarr. The access data suggests residents from various areas in Central Doncaster are receiving support from discounted food parcels via TBBT, but particularly residents from more deprived communities. Wheatley, including Wheatley Park is one of the areas most supported by TBBT in the Central locality.

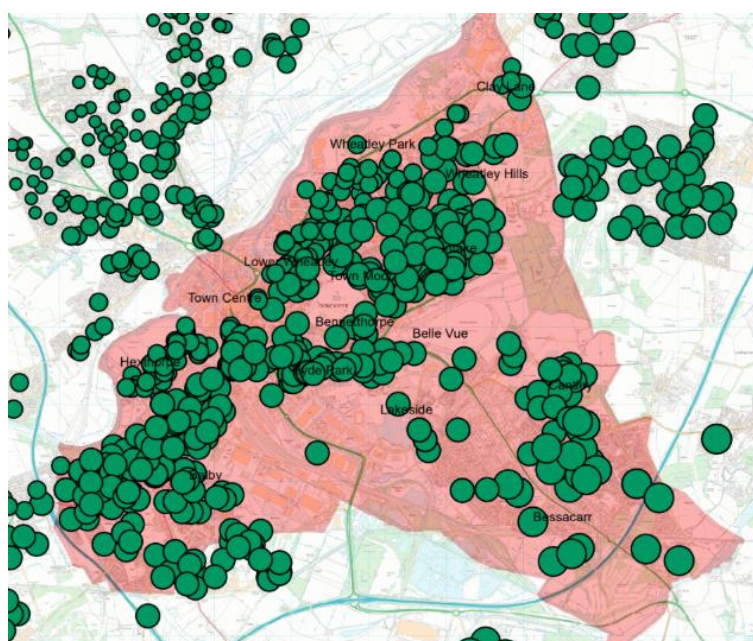


Figure 11. Postcode Map of Residents Accessing TBBT Fiscal Year 2024/25, The Brad and Butter Thing, 2025

Employment

Wheatley Park has a high proportion of economically active people who are also in employment (59.2%) compared to England (57.4%) and Doncaster (54.9%). Alongside this, there is also lower proportion of economically inactive individuals (36.6%) compared to England (39.1%) and Doncaster (41.7%).

Economically active adults are those aged 16 years and over who are in employment (an employee or self-employed), unemployed, but looking for work and could start within two weeks or unemployed but waiting to start a job that had been offered and accepted.

Economically inactive are those aged 16 years and above who did not have a job, and had not looked for work, this can include retired individuals and students.

Census data (2021) shows a high number of residents that are not in employment and have never worked in Wheatley Park (33.0%) compared to Doncaster (27.2%). 13.3% of residents are not in employment: not worked in the last 12 months, again higher than the Doncaster rate of 11.2%. Those that are in employment in Wheatley Park are more likely to be in elementary or lower skilled roles, and less likely to be in managerial or professional professions. This is demonstrated in Figure 12.

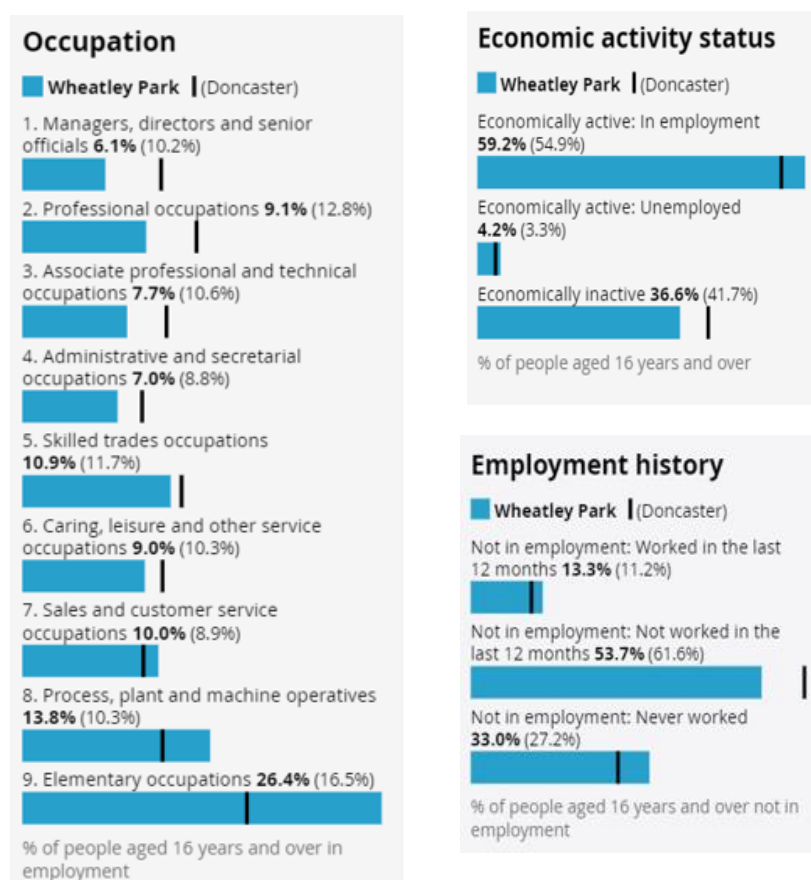


Figure 12. Occupation, Employment History and Economic Activity Status in Wheatley Park, ONS, 2021

Alongside this, 27.7% of residents in Wheatley Park have no qualifications, a higher rate than Doncaster at 24.6%. The number of residents in Wheatley Park that have an apprenticeship (7.1%) is higher than Doncaster (6.7%). This can be seen on the infographic to the right which compares Wheatley Park to Doncaster. The map below shows the number of residents with no qualifications, the darker colour represents a higher prevalence.

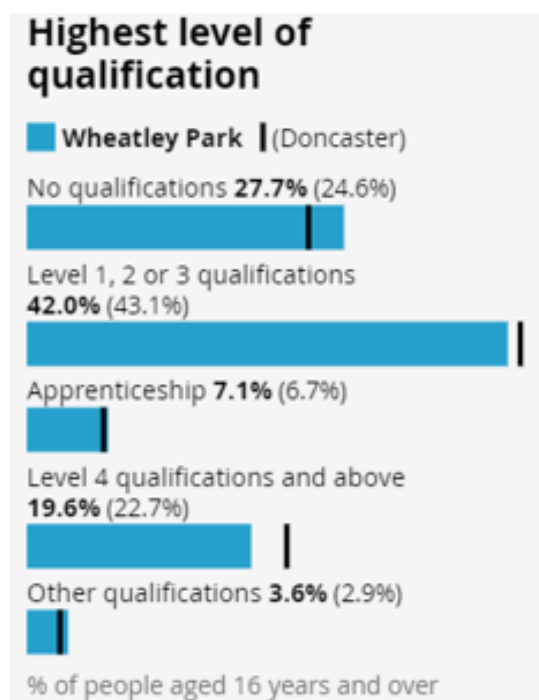


Fig 13. Qualification levels in Wheatley Park, ONS, 2021

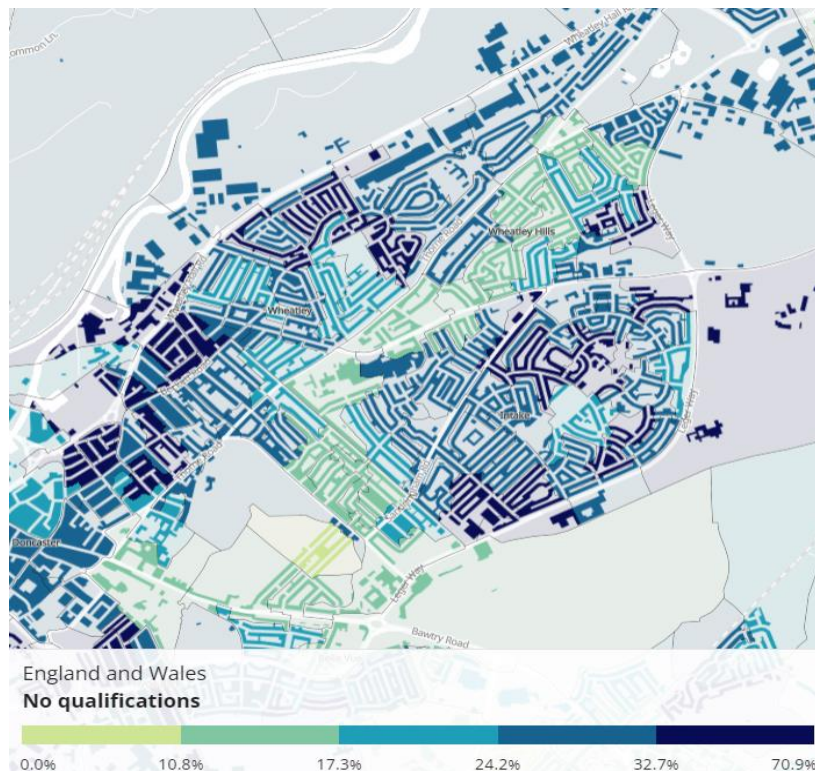


Figure 14. Distribution of people with 'No qualifications' in Wheatley Park, ONS, 2021

Citizens Advice Doncaster Borough

Citizen's Advice Doncaster Borough (CADB) are an independent charity and part of the Citizens Advice Network across England and Wales. They provide free, confidential, and impartial advice and campaign on money, benefit, housing, or employment issues affecting people's lives. In 2020, CADB established a network of community-based outreach sites where residents can access free, impartial information, advice, and guidance. The closest outreach sites are located at People Focus Group Wellness Centre in Intake, St Pauls Church in Wheatley Park and Armthorpe Community Centre.

A total of 237 clients from Intake and Wheatley ward have accessed support in fiscal year 2024/25, which is a decrease from the previous year. Since 2021, the number of people accessing support through CADB had increased year on year from 255 in fiscal year 2021-22, to 318 in 2022-23 and 408 in 2023-24.

Income gains for the whole city, that is the amount of additional income that a client receives as a result of support or intervention from CADB, has increased to £20,616,502 as of 2025, with £219,038 generated in latest full fiscal year 2024/25 from Wheatley and Intake ward alone. As ward data includes residents across Wheatley and Intake, the postcode map below indicates where residents in Wheatley Park are accessing support.

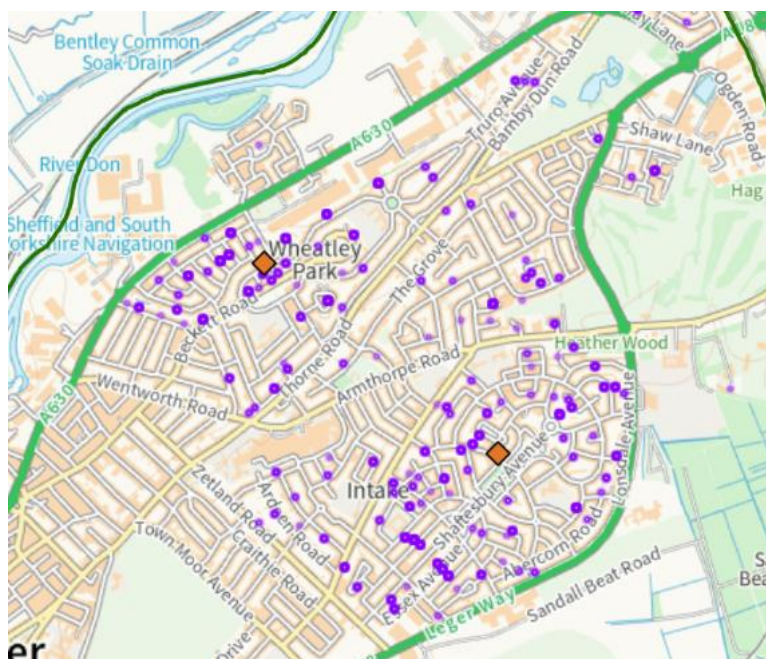


Figure 15. Postcode Areas of Residents Accessing CADB Support, Citizens Advice Doncaster Borough, Fiscal Year 2024-25

The top five reasons residents from Wheatley and Intake are accessing support are: debt, benefits and tax credits, utilities and communications, consumer goods and services and lastly benefits universal credit. More specifically, residents report cost of living regarding fuel (including gas, electricity, oil and coal) as the primary reason for seeking support. Wheatley and Intake rank as the 3rd highest ward in the Central locality seeking support from CADB. The table below shows a breakdown of CADB data comparing Wheatley and Intake to the other top 5 Central wards.

Data collation information	Town			Wheatley & Intake			Hexthorpe & Balby North			Bessacarr			Balby South		
	22/23	23/24	24/25	22/23	23/24	24/25	22/23	23/24	24/25	22/23	23/24	24/25	22/23	23/24	24/25
Year															
Clients	463	617	421	318	408	237	283	434	349	142	183	148	133	159	140
Postcodes covered	230	272	228	181	197	152	133	174	142	93	115	108	80	102	79
Top Issue for advice/info	Debt	Debt	Debt	Debt	Debt	Debt	Debt	Debt	Debt	Debt	Debt	Debt	Debt	Debt	Debt
Total Income gain															
	£239,509	£742,292	£333,828	£171,071	£589,869	£219,038	£243,610	£561,915	£284,999	£87,008	£270,573	£196,972	£63,323	£290,520	£302,413

Table 1. 5 Showing the Top 5 Wards Seeking Support, Citizens Advice Doncaster Bourgh, 2025

Health Inequalities

Life Expectancy

Life expectancy in males in Intake and Wheatley (77.2 years) and females (81.5years) are lower than the rates of Doncaster (*m*: 77.9, *f*: 82.3) and England (*m*: 79.5, *f*: 83.2). Healthy life expectancy at birth for males in Wheatley Park is 59.9 years for men and 62.3 years for women compared to 57.4 for males and 56.1 for women across Doncaster. Figures 16 and 17 show life expectancy at a ward level across the city of Doncaster for males and females.

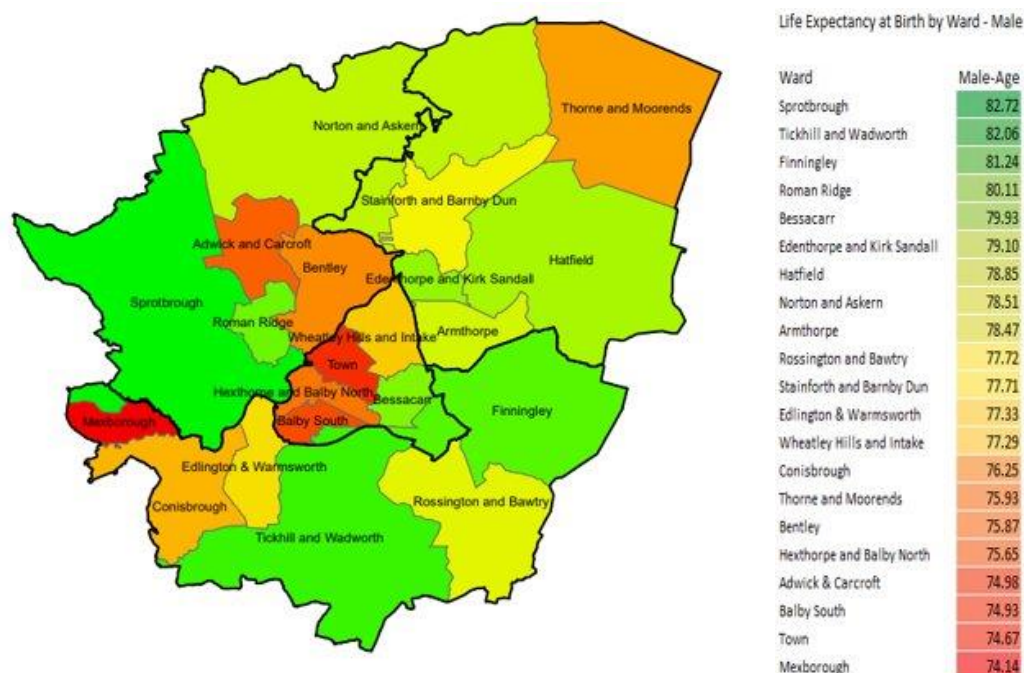


Figure 16. Life Expectancy at Birth by Ward – Male, ONS, 2025

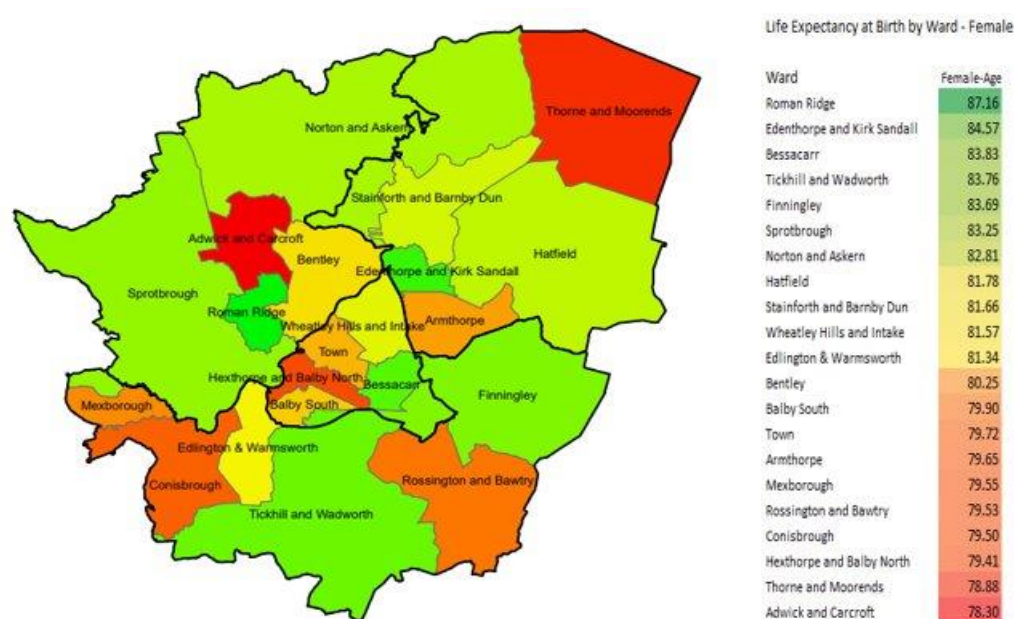


Figure 17. Life Expectancy at Birth by Ward – Female, ONS, 2023

Long-Term Health Conditions

In the Intake & Wheatley ward, the number of people who reported having a limiting long-term illness or disability is significantly higher than the England rate, at 21.8% and 17.6% respectively (Office for Health Improvement & Disparities 2023). In Wheatley Park, 18.1% of residents classify as being Disabled under the Equality Act, this is higher than the England rate (17.3%) but lower than Doncaster (20.3%). The general health status as self-reported by residents in Wheatley Park shows better outcomes than that of Doncaster. This is illustrated in Figure 18.

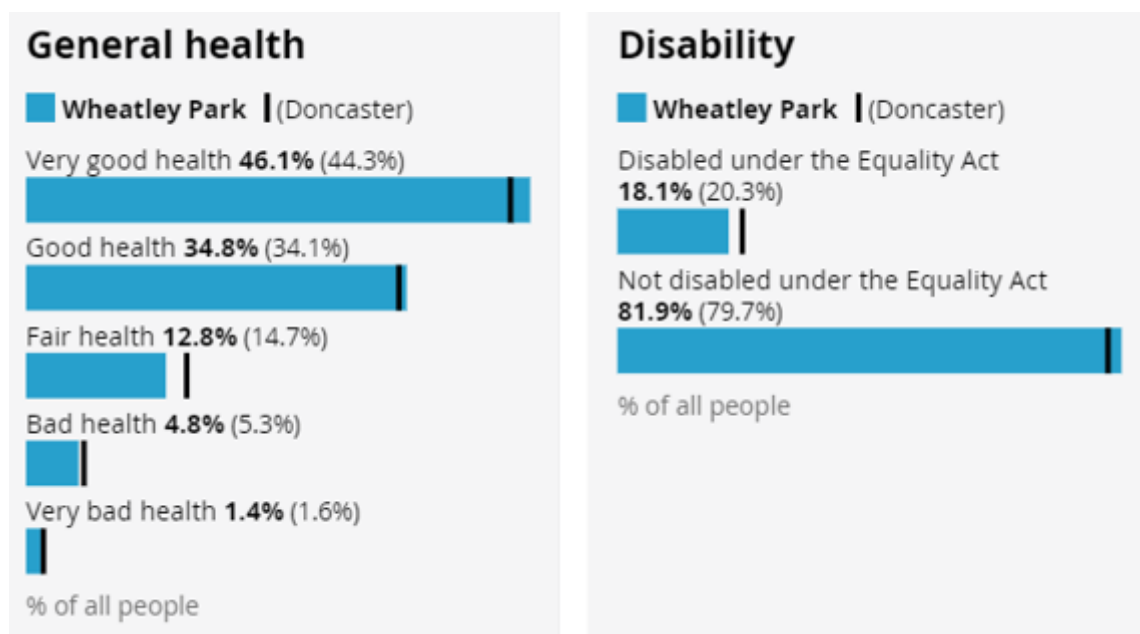


Figure 18. Health Status in Wheatley Park, ONS, 2021

At ward level, the incidence of lung cancer is significantly high with an ISR of 162.9 per 100 and ranks amongst the highest rates across the city. Emergency hospital admissions for chronic obstructive pulmonary disease (COPD) is also high with an ISR of 111.7 per 100 compared to England as the reference population (100 per 100).

Emergency hospital admissions for myocardial infarction (heart attack) is high (118.6 per 100) compared to Doncaster (115.9 per 100) and England (100 per 100).

Emergency hospital admissions for intentional self-harm is significantly high (131.7 per 100) compared to Doncaster (121.6 per 100) when comparing ISR's to England (100 per 100).

Incidence of Death

Data for Wheatley Park is not available at smaller geographical levels and therefore the closest geographical area has been used to indicate cause of death in this community. In this case, Wheatley Hills and Intake ward data and Wheatley Hills medium super output (MSOA) level data has been used and will be distinguished

where necessary. The leading cause of death in the Wheatley Hills & Intake ward is from circulatory diseases with an ISR of 154.7 per 100. Death from coronary heart disease, including other preventable diseases is also high. Preventable death assumes that the underlying cause of death could potentially be avoided by public health and primary care interventions (that is, before the onset of diseases or injuries, to reduce incidence). Mortality from cancer is significantly higher in Wheatley Hills MSOA (the closest data set available to Wheatley Park), the ISR is 128.3/100 using England as the benchmark. The cancer mortality ISR for Doncaster stands at 113.9/100, placing Wheatley communities higher than the Doncaster average.

Alcohol

Alcohol specific admissions per 1000 population for the period April 2016 – July 2023 are available for all 3 LSOAs in Wheatley Park. Wheatley Park Central (52.60) and Wheatley Park North (55.31) both have a higher incidence rate compared to the Doncaster average of 43.67. Wheatley Park South has a lower rate of 26.61. This can be seen in the Figure 19.

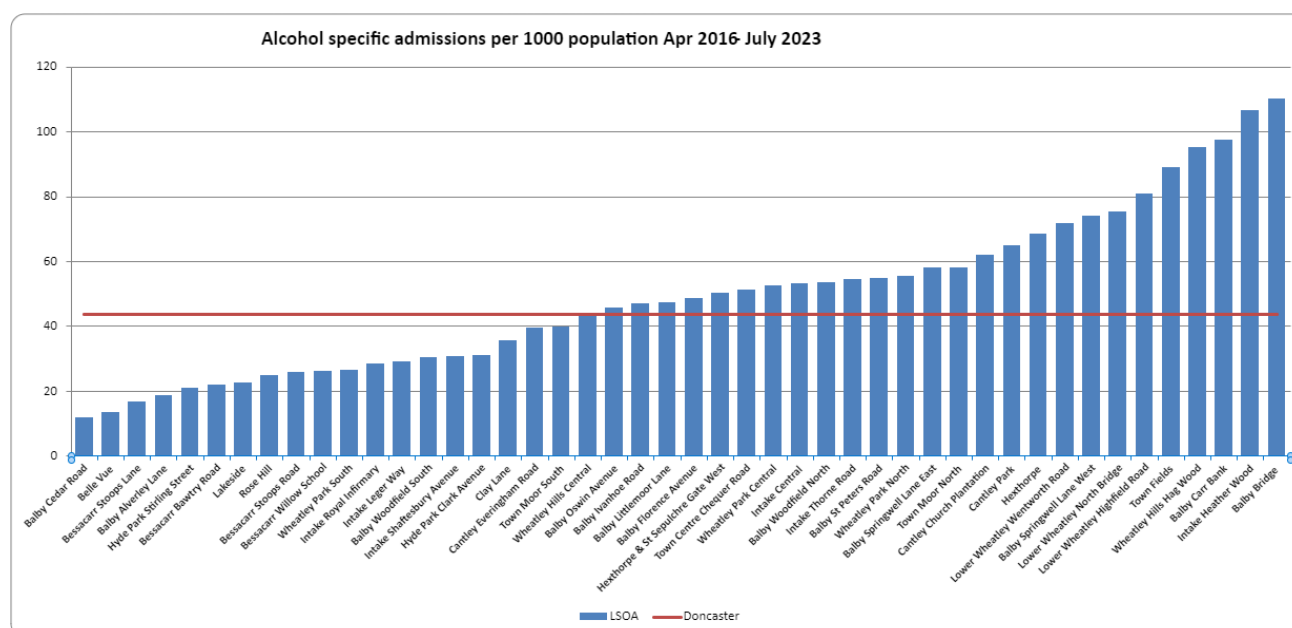


Figure 19. Alcohol Specific Admissions for Central Locality, ONS, 2023

Smoking

According to the latest data from the Office of National Statistics (ONS), 13.5% of Wheatley and Intake ward are smokers. This is lower than the Doncaster (15.7%) rate but significantly higher than England (10.4%).

Action on Smoking and Health (ASH) estimates smoking costs Doncaster £335 million per year, the combined cost of smoking-related medical treatment via hospital admission and primary care services is £16.5 million. Social care costs due to smoking amounts to an estimated £115 million annually in Doncaster, with the majority being

lost to informal care costs from friends and family (£64.3 million). The gross annual cost of smoking as of Spring 2024 was £14.5 million in Wheatley and Intake ward.

An estimated £4.72 million is spent annually on Tobacco products in Wheatley Hills and Intake and the national average spend on tobacco per smoker now stands at £2486. Smoking has a significant impact on employment and productivity, in Wheatley Hills and Intake the total cost due to lost productivity from smoking was estimated at £8.79 million which is significantly higher than the borough average (£6.5M) and the second highest across electoral wards in Doncaster (ASH 2024).

Child Development

A child's early experiences are vital in providing the foundations for children to develop healthily and happily. Children being born into deprivation and living amongst deprivation in their early years are more likely to experience a wide range of health problems, fall behind their peers and face employment problems in adult life. The quality of early experiences is important as children develop, providing opportunity for motor (physical), intellectual (language and communication), cognitive and socio-emotional development.

The Income Deprivation Affecting Children Index (IDACI) measures the proportion of all children aged 0 to 15 living in income deprived families. In Wheatley Park, 61.5% of children are classed as living in child poverty, this is higher than the Doncaster rate (47.1%).

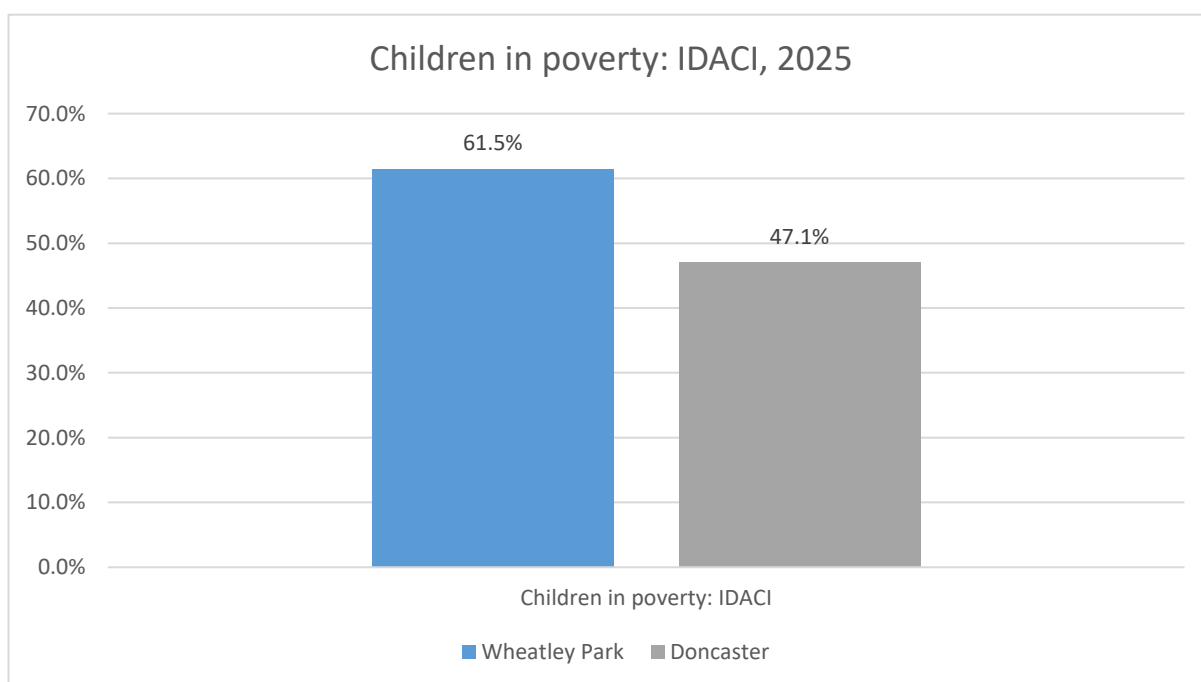


Figure 20. Children in Poverty: Income Deprivation Affecting Children Index (aged 0 to 15), ONS, 2025

Emergency hospital admissions for injuries in 15–24-year-olds in the Wheatley Hills & Intake ward is significantly high at 157.8 per 10,000. Conversely, emergency hospital admissions in under 5 years old in the Wheatley Hills & Intake (86.4 per 1000) are significantly lower than the National rate, and below Doncaster at 91.1.

When looking at childhood obesity, ward level data has been used to compare Wheatley Park to Doncaster and England as smaller geographical level data is unavailable for this community. Reception age children in Wheatley and Intake ward classified as overweight (including obese) stands at 26.1%, the same as the Doncaster average but significantly higher than England (22.6%). This trend continues into year 6 where 39.2% of children are overweight (including obese), significantly higher than the Doncaster (28.3%) and England (21.6%) average.

Table 2 shows the most recent combined data from years 2021/22-2023/24 at community level, indicating lower than average overweightness and obesity in reception age children in Wheatley and Intake but significantly higher rates of overweight and obesity in older children in Year 6. The data suggests a higher percentage of children in Wheatley Park are at a healthier weight at reception age compared to Year 6 where overweight and obesity is higher than the national and Doncaster averages.

	Wheatley and Intake	Doncaster	England
Reception age overweight (including obese)	19.1%	25.8%	21.9%
Reception age obese (including severely obese)	10.3%	12.1%	9.6%
Year 6 overweight (including obese)	45.7%	40.3%	36.7%
Year 6 obese (including severely obese)	28.4%	26.6%	22.7%

Table 2. Overweightness and Obesity in Reception and Year 6 Children 2022/23-2023/24, Department of Education, 2025

School Attainment

The Department for Education supplies each local authority with the school attainment grades for those in Key Stage 2 (KS2) and Key Stage 4 (KS4).

In 2023 for KS2, 45% of pupils achieved the expected standard in reading, writing, and mathematics in Wheatley Park, which is significantly lower compared to Doncaster (55%) and national (60%) averages. Most recently in 2024, KS2 results in Wheatley Park have improved to be more in line with Doncaster (59%) and national (61%) scores at 58%.

At KS4, each pupil is given an Attainment 8 score (a score out of 90) based on their 8 best GCSE grades including English, Maths and at least 3 other traditional academic GCSEs (sciences, languages, and humanities). Other qualifications at an equivalent level (e.g., BTECs) can also count towards the score. In 2019, average GCSE attainment 8 score per pupil was 45.0 in Wheatley Park. This is similar to both Doncaster (44) and England (46.7). Results in 2023 decreased to 41.1 in Wheatley Park, lower than in Doncaster (45.2) and England (48.8). GCSE results followed this trend in years 2022 and 2023, and average scores in Wheatley Park were lower than the national and Doncaster average. Most recently, in 2024 GCSE results have shown a promising improvement with average results now above the national and Doncaster average. GCSE results from the most recent years are indicated in Table 3.

	2024	2023	2022
Wheatley Park	45.3	40.5	40.8
Doncaster	44	44.4	44.9
England	45.9	46.3	48.8

Table 3. GCSE Attainment 8 scores, Department of Education, 2025

Pupil Lifestyle Survey

The Pupil Lifestyle Survey is conducted by CDC to provide valuable data on children and young people's health-related behaviour, through an anonymous school-based questionnaire. Data from the survey has provided a set of Doncaster-wide figures at key points in children and young people's development; KS2, 3 and 4. The Pupil Lifestyle Survey in 2024 had 3810 participants with 227 from Wheatley Hills and Intake ward. Wheatley and Intake has a relatively equal split of boys and girls at 52% and 47% respectively, with 70% of pupils reporting themselves as white ethnicity and 22% as ethnic minority. 39% of pupils reported English as their second language, the second highest ward in the borough and significantly higher than Doncaster (23%).

Wheatley and Intake pupils had higher rates of long-standing illnesses at 16%, joint highest across Doncaster. 11% of pupils from this ward said they were young carers which was the second highest in Doncaster, with the average amount of pupils with caring responsibilities in Doncaster at 7%. When asked about bullying, safety, and home life, only 73% of pupils felt they get love and support at home, lower than the Doncaster average of 77%. The number of pupils who had experienced bullying within the past 12 months was also higher than average at 33% compared to 28% on average. 84% of pupils in Wheatley and Intake said they feel safe at home compared to 88% across Doncaster.

When looking at the wider community outside of school, 69% said they feel able to get involved in the community which is significantly higher than the Doncaster average of

59% and something that goes against a falling average trend for the borough suggesting better community activity and cohesion in Wheatley and Intake.

Family Hubs

Family Hubs are local, community based centres that offer integrated services for families from the early stages of life covering conception and early childhood up to adolescence, and up to age 25 for individuals with special educational needs and disabilities (SEND). Family Hubs offer early years and parental support including antenatal and postnatal care, baby and toddler classes, infant feeding, parenting programmes, SEND pathways and specialist support for mental health, domestic abuse, welfare and substance misuse. Family Hubs provide welcoming community spaces for families, bringing together education, health, social care, and wellbeing services in one facility and cater for a broad spectrum of needs. There are twelve Family Hubs across Doncaster, with three located in the Central locality which consist of Central, Balby and Wheatley Family Hubs.

Membership data shows the percentage of eligible children signed up to Family Hubs. In Q4 of fiscal year 2024-2025 membership of children in Wheatley Park was 92% for children aged 0-8 weeks, 92% for 0-1 year and 11-month-old children, and 95% for children aged between 0-4 years and 11 months. In comparison, average membership across Family Hubs in Central for all ages in fiscal year 2024-2025 was 84%. Wheatley Park membership is higher than average and has the highest average membership across all ages in the Central locality.

Access data includes the percentage of children using Family Hubs services once or twice, and engagement figures indicate the number of children seen three or more times. Engagement in Wheatley Park is similar compared to other wards. When looking at the average yearly access and engagement figures from Central Family Hubs across Central communities (including all ages) the data shows access (81%) is in line with Wheatley Park.

	0-8 weeks	0-1 year and 11 months	0-4 years and 11 months
Membership	92%	92%	95%
Access	NA	65%	84%
Engagement	NA	43%	68%

Table 4. Family Hub Membership, Access and Engagement Figures for Wheatley Park, Q4 Fiscal Year 2024-25, City of Doncaster Council, 2025

	Central Family Hubs
Membership	84%
Access	81%
Engagement	66%

Table 5. Central Locality Family Hub Children's Membership, Access and Engagement Figures, All Ages, Fiscal Year 2024/25, City of Doncaster Council, 2025

There are several factors that could contribute to membership, access and engagement figures which must be considered when interpreting data. A complex relationship exists between socioeconomic, cultural, education, deprivation and independence as well as other factors and indicators which can influence these rates. Data across all recorded age groups is available in the table below.

Family Hubs facilitate 2-Year-Old Funding Entitlement for families which provides up to 15 hours of free early education or childcare per week for 38 weeks of the year. The latest data from Summer 2025 indicates 62.4% of eligible children in Doncaster have taken up 2-year-old funding including late starters, this was 57.6% for Wheatley Park. When looking at late starters for the same year, Doncaster saw 64% take-up in comparison to 60.6% in Wheatley Park. 2-year-old funding uptake is lower across Central Family Hubs in Summer 2025 at the beginning of term (54.5%) and for late starters (56.4%) compared to Doncaster 62.4% and 64% respectively.



Physical Activity

It is known that Doncaster has more physically inactive adults, and fewer physically active adults than the national average. 28.9% of adults in Doncaster are physically inactive, which is significantly higher than the England rate (23.4%).

Mosaic data shows a large percentage of the population in Wheatley Hills & Intake do not engage in any moderate intensity physical activity. Please see the appendix for more information on mosaic data.

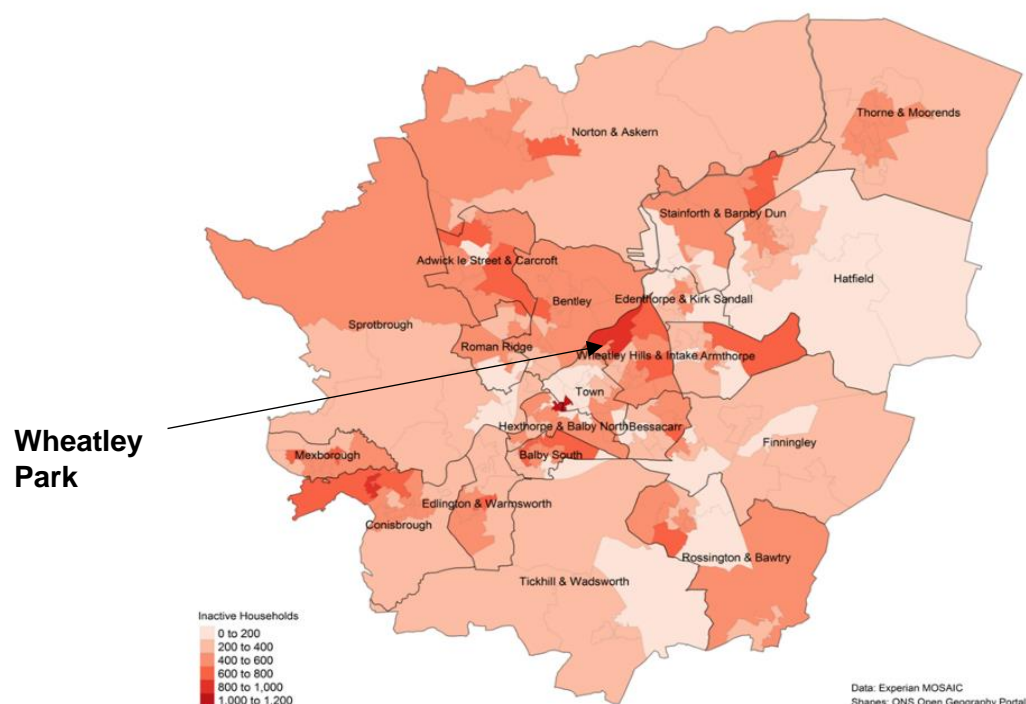


Figure 21. Mosaic Map of Household Physical Activity Levels in Doncaster, Get Doncaster Moving, 2023.

Physical Activity Children & Young People

Data from the Pupil Lifestyle Survey 2022 reports 52% of children walk to school and 32% are active one to two days per week, whilst 26% reported as being active three or four days, and 38% on five or more occasions during the week. In 2024 the number of pupils walking to school decreased to 48%. 98% of pupils reported being active in the last 7 days and 53% are active at least 5 days a week, an increase from 38% in previous years. Getting hot and tired during physical activity and being shy about their body were the two prominent answers given by pupils when asked why they did not participate in physical activity in 2022. This has since changed to pupils feeling like they are not good at physical activity as the main barrier to being active in 2024.

Active Travel

Census data (2021) shows that the majority of residents aged 16 years and over in employment in Wheatley Park travel less than 10km to a place of work (53.2%). The leading method of travel to the workplace is driving a car or van (52.5%), with 9.6% being a passenger in a car or van. 12.2% use a bus, minibus, or coach, which is over twice as high as the Doncaster rate of 4.6%.

The number of residents in Wheatley Park that travel by active travel modes such as bicycle or walking (15.0%) is higher than both the England (9.7%) and Doncaster (8.9%) rate. Furthermore, the Pupil Lifestyle Survey showed that 52% of children in the Wheatley Hills & Intake ward reported walking to school, this is higher than the Doncaster average of 47%.

Green Spaces and Parks

The largest green space/park in the ward is Sandall Park, which is a short walk away from Wheatley Park. At Sandall Park there are various amenities and family friendly activities including toddler and junior play areas, playing fields, outdoor gym equipment, basketball, and football pitches. There is also a large lake, a smaller pond, wildflower areas and a variety of wildlife that reside here. Many large events take place at the park throughout the year such as The Summer Festival, Dogs shows and more. Sandall Park is also home to one of Doncaster's Park Run events held every Saturday morning.



Community Information

Population

Wheatley Park: 6,400 (Census 2021)

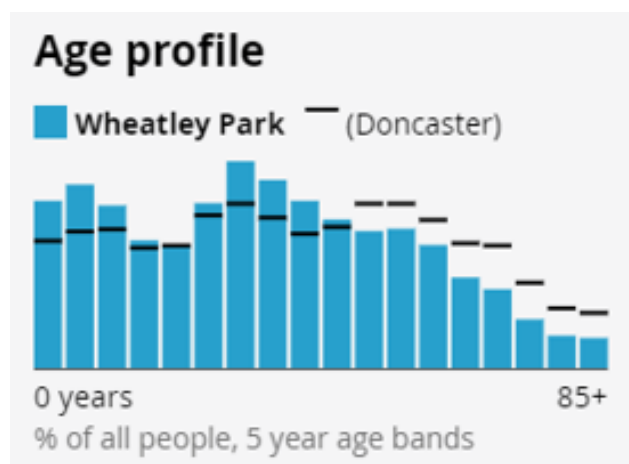


Figure 22. Age profile of Wheatley Park, ONS, 2021

The population of Wheatley Park has a higher proportion of children and young people aged 0-14 years and adults aged 25 – 44 years with a lower-than-average number of adults aged 50 years and above, and 15 – 24-year-olds compared to Doncaster. This is demonstrated in the infographic below.

Wheatley Park		England	
Age Band	Proportion	Age Band	Proportion
0 - 4 years	7.1%	0 - 4 years	5.4%
5 - 9 years	7.8%	5 - 9 years	5.9%
10 - 14 years	7.0%	10 - 14 years	6.0%
15 - 19 years	5.5%	15 - 19 years	5.7%
20 - 24 years	5.2%	20 - 24 years	6.0%
25 - 29 years	7.3%	25 - 29 years	6.6%
30 - 34 years	8.8%	30 - 34 years	7.0%
35 - 39 years	8.2%	35 - 39 years	6.7%
40 - 44 years	7.2%	40 - 44 years	6.3%
45 - 49 years	6.4%	45 - 49 years	6.4%
50 – 54 years	5.9%	50 – 54 years	6.9%
55 – 59 years	6.1%	55 – 59 years	6.7%
60 – 64 years	5.3%	60 – 64 years	5.8%
65 – 69 years	4.0%	65 – 69 years	4.9%
70 – 74 years	3.4%	70 – 74 years	5.0%
75 – 79 years	2.1%	75 – 79 years	3.6%
80– 84 years	1.4%	80– 84 years	2.5%

Wheatley Park		England	
Age Band	Proportion	Age Band	Proportion
85 years and over	1.3%	85 years and over	2.4%

Table 6. Age Band Comparison Between Wheatley Park and England, ONS, 2021

Demographics (Ethnicity, Language, and Religion)

84.2% of the population in Wheatley Park are White, lower than the Doncaster rate of 93.1%. 6.8% of the population are Asian, Asian British, or Asian Welsh, this is significantly higher than the Doncaster rate of 2.9%. 2.8.% of the population are Black, Black British or Black Welsh, Caribbean or African. This is higher than Doncaster (1.2%) but lower than England (4.2%). 6.2% of the population are mixed or multiple ethnic groups, or of other ethnic groups.

24.6% of the population were born outside of the UK, higher than the Doncaster rate of 10.4%. 17.4% of the population in Wheatley Park identify as non-UK, compared to 7.0% in Doncaster. Furthermore, 1 in 5 residents are non-UK passport holders (19.2%), with 19.5% having no passport.

80.1% of residents in Wheatley Park use English as their main language, lower than the Doncaster average of 92.8%.

Just under half of residents in Wheatley Park are of Christian religion (45.8%). This is similar to the England rate of 46.3%, but lower than Doncaster at 50.9%. 7.8% of the population are Muslim, higher than Doncaster at 2.2%. This is indicated in figure 23 which compares Wheatley Park to Doncaster.

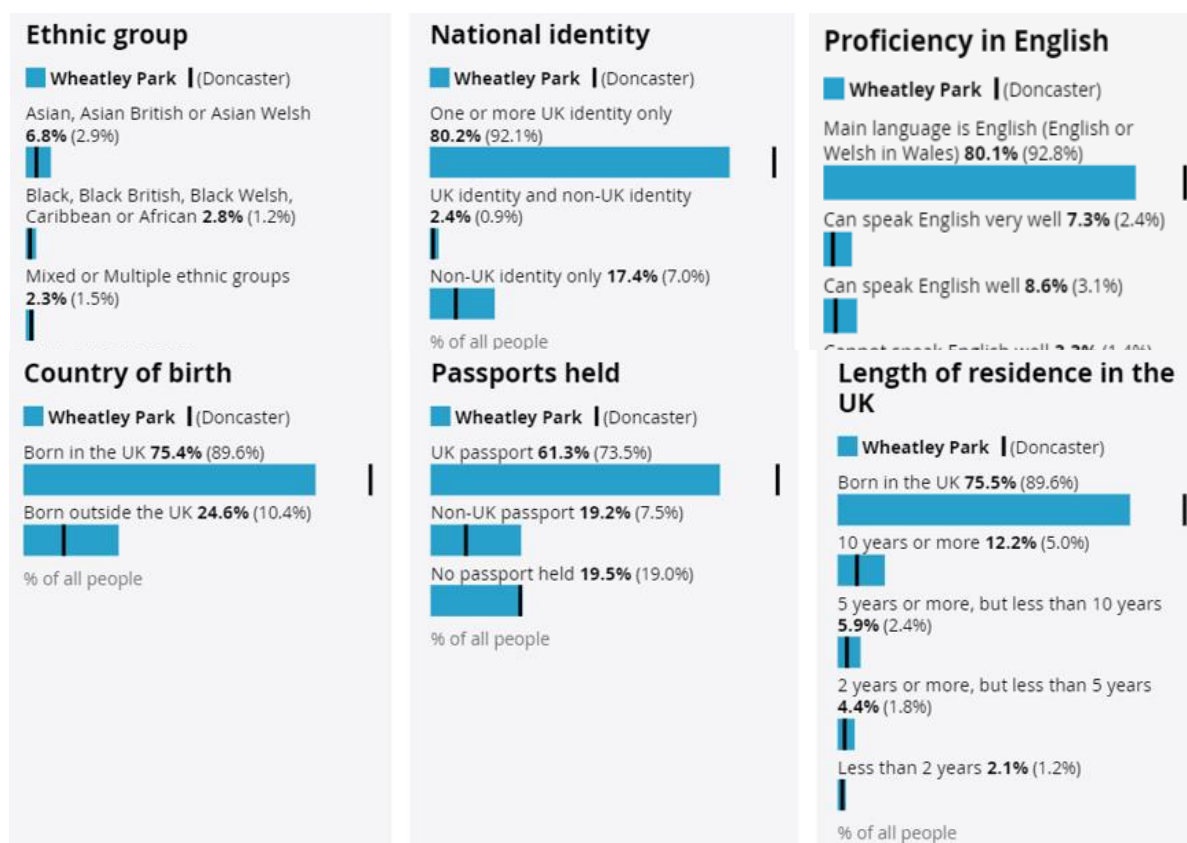


Figure 23. Demographic Comparison Between Wheatley Park and Doncaster, ONS, 2021

Figure 24 shows the number of people born outside of the UK. The darker colour represents a higher prevalence of residents who were born outside of the UK living in the Wheatley area.

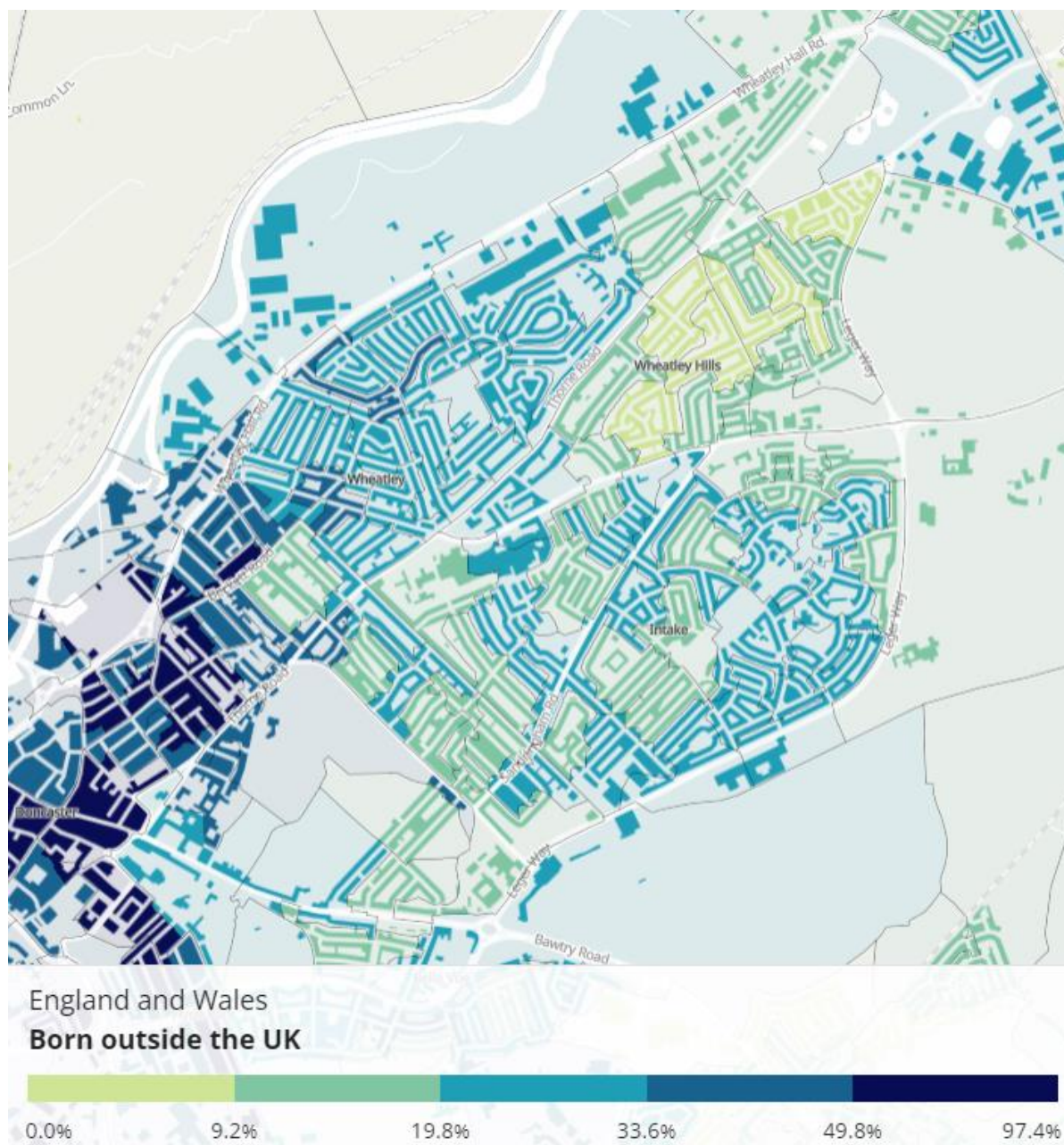


Figure 24. Proportion of Residents Born Outside UK, ONS, 2021

Housing

Housing conditions and the surrounding environment can have profound impacts upon residents' health and exacerbates health inequalities. The data below explores several variables to analyse housing in Wheatley Park.

There are 2,600 households in Wheatley Park. The majority of households are whole houses or bungalows (93.1%), comprising of 3 bedrooms (72.5%). 19.4% of households in Wheatley Park contain 3 people, and 23.7% contain 4 or more people, both higher than the Doncaster rates. This fits in line with the demographic of having a large proportion of children and young people in the community.

Census data shows that the number of private rented properties (or people living rent free) in Wheatley Park (21.0%) is higher than in Doncaster (19.7%). The number of social rented households is also significantly higher at 24.6%, compared to Doncaster (17.0%). Homes owned outright is lower in Wheatley Park than in Doncaster, at 24.7% and 33.6% respectively.

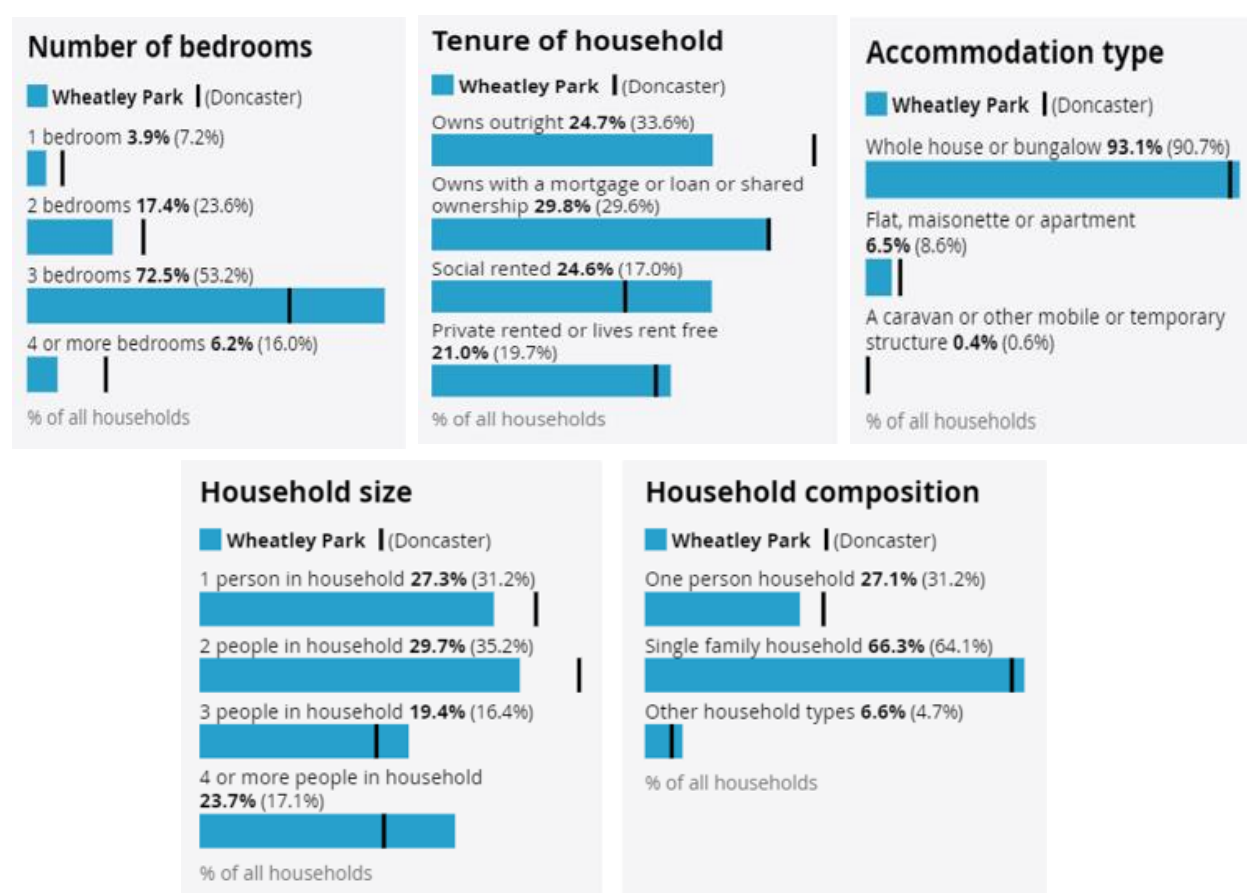


Figure 25. Household Statistics in Wheatley Park, ONS, 2021

St Leger Homes is the main provider of Social Housing in Doncaster. St Leger homes manage 847 properties in Wheatley Park on behalf of CDC (CDC). This comprises of 199 bungalows, 151 flats, 494 houses, 2 bedsits, and 1 maisonette. Those who rent these properties are mostly aged 26-45 years (272), 46-65 years (304) and 65 years and above (222). There are 29 residents renting who are aged 18-25 years and 1 household aged under 18 years old.

The total rent arrears from those living in St Leger Homes properties in Wheatley Park was £74,476.00 in 2022/23, this increased from £61,556.00 in 2021/22. Data for following years is not available within this community.

Community Safety

Community safety remains a top priority for residents and stakeholders across Doncaster. Feedback from a range of engagement activities consistently highlights concerns around anti-social behaviour (ASB), crime, and perceptions of safety. People want cleaner, more vibrant and welcoming neighbourhoods, supported by effective policing, youth engagement, and thoughtful environmental design.

To help achieve this, we're committed to a city-wide approach that combines proactive and reactive measures through a layered crime prevention strategy—primary, secondary, and tertiary—designed to make every community safer.

If you'd like to stay informed or take action, you can find detailed crime statistics for your neighbourhood at www.police.uk. To report issues or concerns, visit www.yourlifedoncaster.co.uk/safer-city-how-to-report-issues.

The Safer Stronger Doncaster Partnership

The Safer Stronger Doncaster Partnership is working together to make Doncaster a safer, stronger place for everyone. The partnership focuses on six key priorities that tackle issues affecting our communities:

- **Reducing anti-social behaviour (ASB)** – making our streets and public spaces welcoming for all.
- **Reducing crime and re-offending** – supporting people to make positive choices and preventing repeat offences.
- **Tackling serious and organised crime** – protecting our communities from organised criminality and criminal networks.
- **Reducing substance and alcohol misuse** – helping people access support and reducing harm.
- **Tackling domestic and sexual abuse** – ensuring victims get the help they need and holding perpetrators to account.
- **Reducing violence and violent crime** – creating safer neighbourhoods for families and young people.

Together, these priorities aim to build a Doncaster where everyone feels safe and supported.

Community Voice / Key Safety Concerns

People in Central Doncaster told us that safety feels very mixed: some areas feel secure, while others are struggling with anti-social behaviour and environmental issues. Residents spoke about loitering, street drinking, and intimidation in certain hotspots, alongside concerns about fly-tipping and poorly maintained public spaces. Many said they want more visible policing and enforcement to tackle these problems and restore confidence. There's also a call for better youth services and safe spaces to reduce disruption and give young people positive options. Overall, the community wants cleaner streets, stronger enforcement, and more opportunities to bring people together and rebuild pride in Central Doncaster.

Anti-Social Behaviour

Data on the number of early interventions, ASB, hate crime and low-level crime issues identified and managed in the Central locality show that in 2023/24 there were 1580 cases. Of these, 349 incidents were in the Wheatley & Intake ward (3rd highest following Town ward and Hexthorpe & Balby North ward). These are issues that are purely dealt with by Stronger Communities Officers prior to any other agency/multi-agency involvement in the true sense of early intervention and thus preventing escalation and involvement from other, more costly services, and is shown in Figure 26.

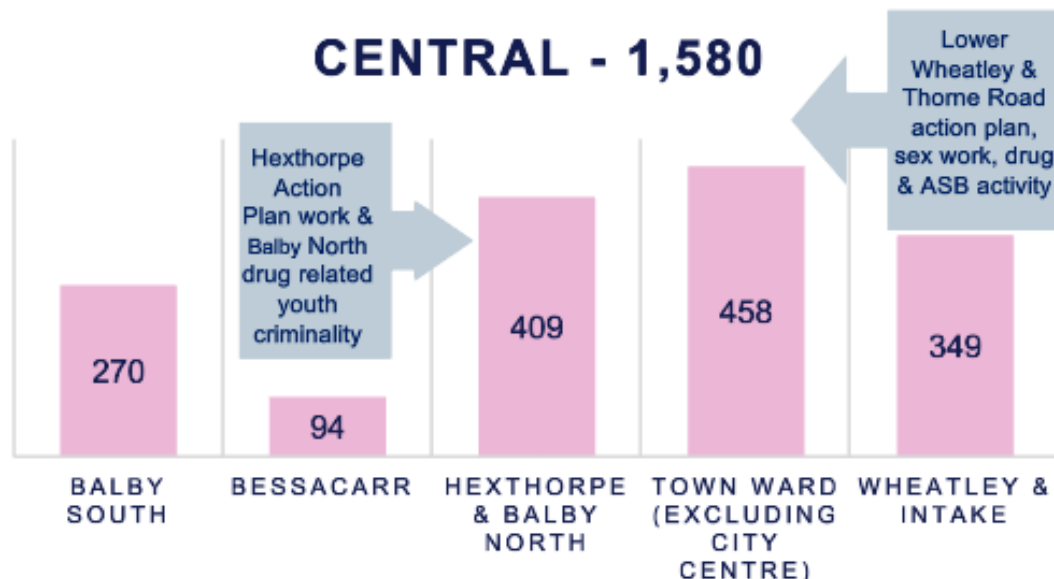


Figure 26. ASB/ Early intervention & prevention by Ward, City of Doncaster Council, 2024

ASB incidents by ward highlighted that of the 604 incidents in the Central locality, 68 incidents were in the Wheatley Hill & Intake ward – 3rd lowest above Balby South (61) and Bessacarr (37).

Vulnerable Victims

The number of vulnerable victims for each Locality is also recorded. These figures represent individuals affected by repeat incidents of ASB. The below shows that in 2023/24 the Central locality had the 2nd highest rate of vulnerable individuals, at 41. Of these 16 were in the Wheatley and Intake ward, this was the highest figure across the Central locality followed by Hexthorpe & Balby North (12).

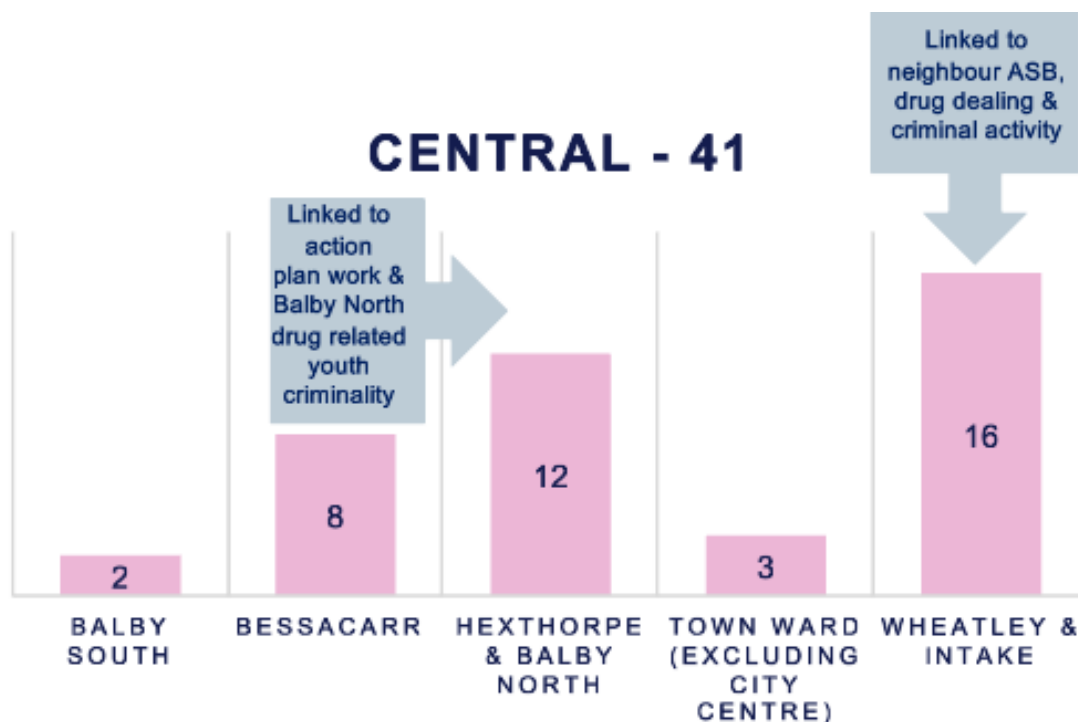


Figure 27. Vulnerable Victims Supported by Ward, 2023/24, City of Doncaster Council, 2023

Wellbeing Service

This service is run by CDC. The Wellbeing Service helps residents with financial support, physical health, housing, mental health and social isolation, reducing the risk of escalating into adult social care services. Wheatley and Intake ward accessed the Wellbeing Service most frequently in the last three full fiscal years 2021-2024.

Community Ranking for using service	2021-2022	2022-2023	2023-2024	2024-2025 Q4
1	Wheatley & Intake	Wheatley & Intake	Wheatley & Intake	Town
2	Rossington & Bawtry	Rossington & Bawtry	Bessacarr & Cantley	Hexthorpe and Balby North
3	Thorne & Moorends	Mexborough	Mexborough	Rossington
4	Adwick & Carcroft	Adwick & Carcroft	Hexthorpe & Balby North and Bentley	Thorne and Moorends
5	Town/City Ward	Bessacarr & Cantley	Rossington & Bawtry and Town/City Ward	Norton & Askern

Table 7. Top 5 wards using the Wellbeing Service, City of Doncaster Council, 2025

Wheatley and Intake	Theme Supported
1	Financial
2	Housing and Living Environment
3	Mental and Emotional Health

Table 8. Top 3 Most Common Themes Residents are Accessing the Wellbeing Service for Support, City of Doncaster Council, 2025

Community Investment

As of July 2025, there has been £12.3 million of investment into the Central Locality from Doncaster Delivering Together. This investment has been successfully applied for by partners and Voluntary Community and Faith Sector (VCFS) groups. The top 3 areas of funding spend has gone to increasing community spirit (£879,798.09), mental health support and awareness (£594,269.79) and using and improving community assets (£562,444.14). The top three areas of investment for Intake have gone towards increasing financial security, increasing community spirit and using community assets.



Figure 28. Community Investment in Wheatley Hill, Doncaster DELIVERING Together, 2025



References

Armstrong, A.J., Holmes, C.M. and Henning, D., 2020. A changing world, again. How Appreciative Inquiry can guide our growth. *Social Sciences & Humanities Open*, 2(1), p.100038.

Ritchie, J., Spencer, L., O'Connor, W., & Lewis, J. (2003). Carrying out qualitative analysis. *London: Sage*.

Appendix

Well Doncaster

More information about Well Doncaster can be found on our website:

[Home | Well Doncaster](#)

Census 2021

The census is undertaken by the ONS every 10 years and gives us a picture of all the people and households in England and Wales.

[Build a custom area profile - Census 2021, ONS](#)

[Census Maps - Census 2021 data interactive, ONS](#)

Public Health Data

Fingertips

This is a new fingertips profile that uses data from Local Health an existing PHE data tool. Local Health is a collection of quality assured health information presented for small geographical areas. By presenting data for small areas, Local Health provides evidence of inequalities within local areas. It supports targeted interventions to reduce such inequalities.

Local Health contains indicators related to:

- Population and demographic factors
- Wider determinants of health
- Health outcomes

It presents data for middle super output areas (MSOA), electoral wards, clinical commissioning groups (CCG), local authorities, and England as a whole.

Please note, as the Local Health tool was designed to allow users to map small area data, a mapping option has not been provided in this profile.

<https://fingertips.phe.org.uk/profile/local-health/data#page/0>

[Local Health - Public Health England - Reports: get a dashboard on a custom area](#)

Link to data- [Fingertips | Department of Health and Social Care](#)

Life expectancy and healthy life expectancy by ward: [Life expectancy by census ward](#)

Indices of Multiple Deprivation 2025 – statistical release, data files and reports: [English indices of deprivation 2025 - GOV.UK](#)

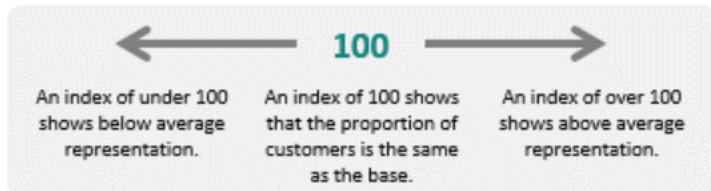
Acorn profiles

Wellbeing Acorn segments the population into 4 groups (Health Challenges; At Risk; Caution; Healthy) and 25 types describing the health and wellbeing attributes of each postcode across the country. By analysing significant social and health related behaviour, it provides precise information and an in depth understanding of upstream issues affected by current lifestyle traits

INTERPRETING THE REPORT

The Wellbeing Acorn profile report helps you understand the underlying demographics, lifestyle and health attributes of your customers and service users by comparing their Wellbeing Acorn profile to a base (e.g. UK population, area or other customer groups).

INDEX



The Wellbeing Acorn Profile contains 12 variables that are indicators of Disability or Infirmary in the population and 9 variables related to unhealthy Behaviours. The average score measured against the base profile of Yorkshire and the Humber is 100. A value above 100 indicates that the area population is overrepresented for this characteristic, below 100 the value is less than the average or underrepresented.

Physical Activity

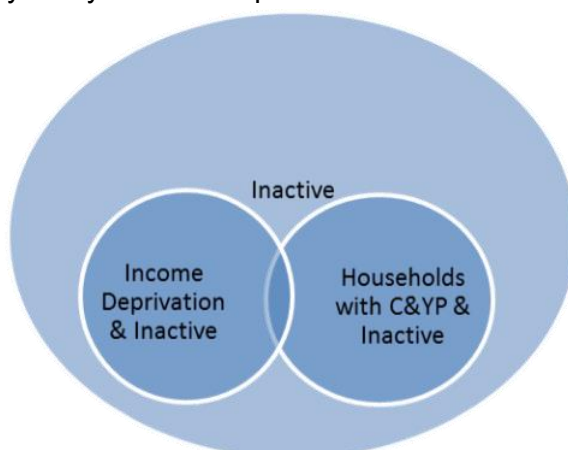
Get Doncaster Moving survey

<https://getdoncastermoving.org/uploads/behavioural-insight-phase-one-summary-report.pdf?v=1644581925>

Mosaic data

Mosaic Public Sector classifies the UK population into one of 66 types and 15 groups through a detailed and accurate understanding of each citizen's demographics, lifestyles, behaviours and location.

The Physically Inactive Population of Doncaster



The MOSAIC types who “Do not exercise” and “Do not take part in Sport” were searched and three priority groups have been identified through work with strategic partners as part of the development of Doncaster’s Physical Activity Strategy. The three priority groups are:

- The Inactive
- Families with children and young people
- People living in income deprivation

These groups are cross-referenced against the inactivity list allowing for the identification of MOSAIC types which are both likely to be inactive and living in deprivation as well as inactive and from households with children and young people.

Link to the Get Doncaster Moving strategy; [Let's Get Moving! | Get Doncaster Moving](#)

Pupil Lifestyle Survey

[Pupil Lifestyle Survey - Healthy Schools \(healthylearningdoncaster.co.uk\)](#)

Power BI – Joint Strategic Needs Assessment

The Joint Strategic Needs Assessment (JSNA) is a process that identifies the current and future health and wellbeing needs of a local population. The dashboards show information about the employment, health, and wellbeing of people in Doncaster. We use this information to inform our policies and strategies to improve the lives of everyone in the Doncaster area.

[Joint Strategic Needs Assessments - Team Doncaster](#)

Community Safety

The Safer Stronger Doncaster Partnership Community Safety Strategy can be found at - [The Safer Stronger Doncaster Partnership - CDC](#)

If you'd like to stay informed about crime and ASB in your community, you can find detailed crime statistics for your neighbourhood at www.police.uk.

If you would like further information about making Doncaster a Safer City please see - [Making Doncaster a Safer City - YourLifeDoncaster](#)

To report issues or concerns, visit www.yourlifedoncaster.co.uk/safer-city-how-to-report-issues

Community Investment:

Investment Map: [Doncaster Delivering Together Investment Plan - Team Doncaster](#)

Interactive Map

To access and identify assets at ward and locality level please use the following interactive map: <https://www.google.co.uk/maps/d/viewer?mid=17BayPsliJ1OUq6U4OFbk9FKLYL2-wDZN&ll=53.50909620569456%2C-1.1365028000000032&z=14>