



Cantley

Community Profile

Well Doncaster

Community Led Health and Wealth

Empowering people in Doncaster to live better, healthier, and happier lives.

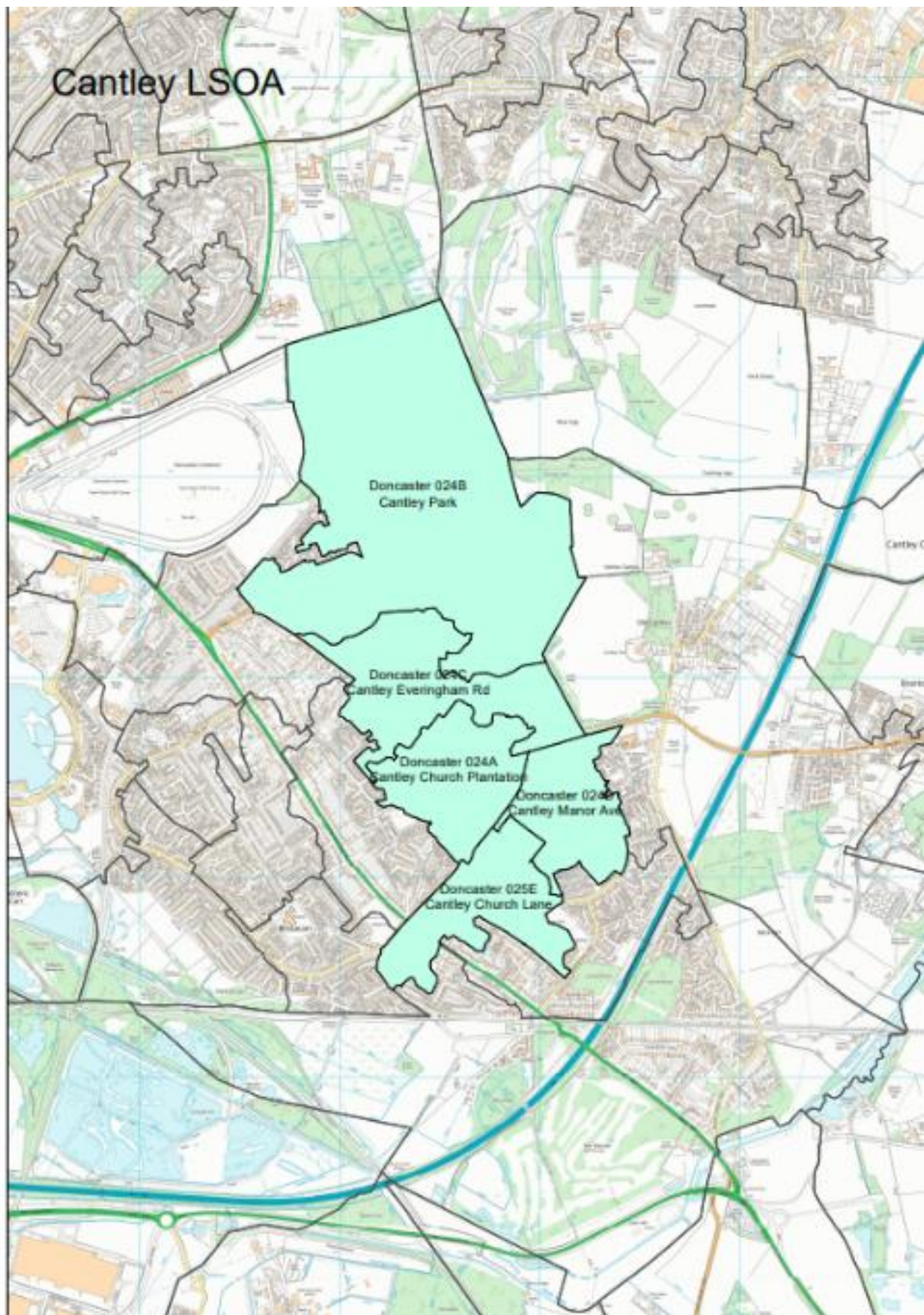
www.welldoncaster.uk

Well Doncaster
**Community
Wealth Builder**

Well Doncaster
Be Well



**City of
Doncaster
Council**



This Report

This report uses a population health management approach to looking at the health of a whole group of people such as a town, neighbourhood, or community instead of just focusing on one person at a time. It is designed to help community leaders, services, residents etc. understand the strengths of both people and place, whilst also looking into what health challenges are common in that group, what services are needed most, and where help is lacking. By using data and trends, this Community Profile can inform tailored ways to keep people healthy, prevent illness, and make sure everyone gets the care they need. By focusing on prevention, early intervention, and coordinated care, together we can build healthier communities and support long-term, sustainable improvements in public health. The first Community Profile was written in 2023 and has been refreshed in 2025 to reflect the current opportunities and challenges of the community.

This report focuses on the community of Cantley, part of the Bessacarr ward in the Central locality of the city and begins with a summary outlining key information and priorities. This document includes conversations with communities, ward members, community organisations, faith groups, residents and other organisations who work in the area. This document is shared with the intention of supporting those conversations and sharing information that might not be readily available to local people.

To ensure each community is represented as accurately as possible, where possible, separate data and illustrations have been used. Data that is only available at ward level will be stated when included. Indirectly Standardised Ratios (ISRs) have been used throughout this document and have been used to compare data at community and ward level, against a reference population. ISRs show how often an event (such as deaths or hospital admissions) occurs in a population compared to what would be expected in a reference population, after adjusting for age differences. England is used as the reference population for ISR's throughout the document.



Contents

This Report.....	3
One Page Summary	7
Community Priorities.....	7
Assets	8
Asset Maps.....	8
Population Health Management.....	9
Assets in the Community	10
Community Insight	11
Appreciative Inquiry	11
Doncaster Talks.....	14
Ward Members	15
Health and Wealth Inequalities	15
Wealth Inequalities.....	15
Deprivation	15
Employment	18
Fuel Poverty	19
Food Poverty.....	20
The Bread and Butter Thing	21
Citizens Advice Doncaster Borough.....	22
Health Inequalities.....	24
Life Expectancy	24
Long-Term Health Conditions	24
Incidence of Death	25
Alcohol	25
Smoking.....	26
Childhood Development.....	27
School Attainment	28
Pupil Lifestyle Survey	29
Family Hubs	31
Physical Activity.....	33
Physical Activity Children and Young People	34
Green Spaces and Parks.....	34
Community Information	35
Population and Diversity	35
Cantley Population size.....	35

Age profile	35
Housing	35
Community Safety	36
Key Community Safety Priorities	36
Community Voice / Key Safety Concerns	37
Crime and Anti-Social Behaviour	37
Wellbeing Service	38
Community Investment	39
References	40
Appendix	41



Cantley



**35.2% of
year 6
children are
overweight
or obese**



**Average GCSE
results score
is lower in
Cantley (39.9)
compared to
Doncaster
(44.4)**



**Stroke is
the leading
cause of
death**



**44.8% of
homes are
outright
owned**



**23%
have no
qualifications**



**7.4%
residents
report living
in 'bad
health'**

One Page Summary

Cantley is part of the Bessacarr ward in Doncaster's Central locality. It ranks as the 37th most deprived community out of 88 in the city.

Employment is broadly in line with city averages, with 51.6% of residents in work, and Universal Credit claimants are significantly fewer than the Doncaster average (2.7% vs 4.4%). Cantley has a higher population of economically inactive people (42.2%) compared to Doncaster (24.8%).

Health outcomes show mixed results. 41.9% of residents report very good health, slightly below Doncaster's 44.3%, while those reporting bad or very bad health (7.4%) are marginally higher than borough averages. Emergency hospital admissions for lifestyle-related conditions are lower than Doncaster overall, but preventable health issues remain a concern. Childhood obesity rates are lower than borough and national averages in reception (22%) and Year 6 (36.8%), though sedentary behaviours and weight management remain priorities.

Housing is a key issue with 28.9% of homes being social housing, significantly higher than Doncaster's 17%. Rent arrears are the 7th highest in the borough, and debt is the leading reason residents seek support from generalist advice. Cantley has 13 homeless family properties and rising demand for wellbeing services.

While community spirit and green spaces are valued assets, challenges include income-related hardship, health inequalities, and anti-social behaviour linked to substance misuse.

Community Priorities

- Reduce income-related hardship and debt, including rent arrears and financial insecurity.
- Improve child health and development, focusing on weight management and reducing sedentary behaviours.
- Prevent premature deaths through tackling smoking, alcohol misuse, and increasing physical activity.
- Enhance housing stability and quality, addressing social housing pressures and homelessness.
- Strengthen community safety and cohesion, reducing anti-social behaviour and supporting wellbeing.

Assets

Well Doncaster uses community centred approaches that support investment in supporting, working with and empowering communities to facilitate a healthy community. The voice and role of our communities and taking a strengths/assets based approach to work with individuals, families and communities is crucial to the achievement of our overall vision.

Asset Maps

The maps below show different types of assets across the City Centre. Please refer to the [appendix](#) for larger maps

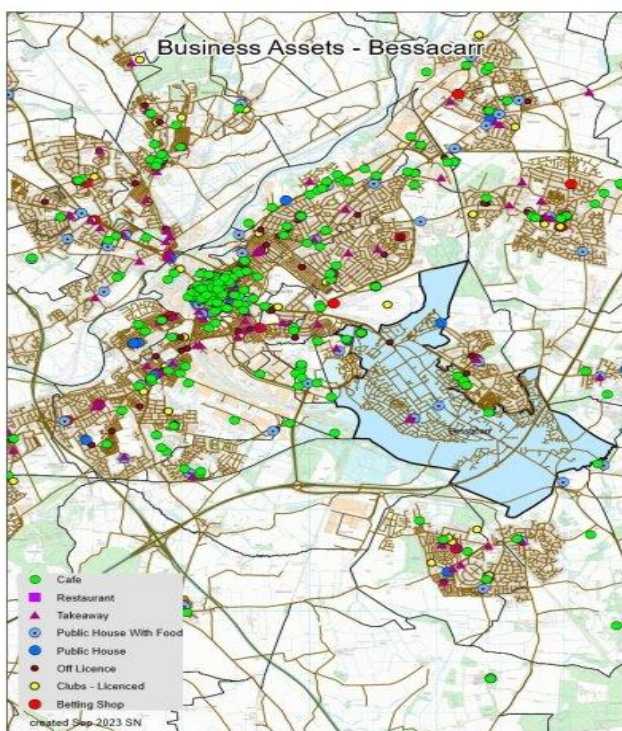


Figure 2. Cantley community assets

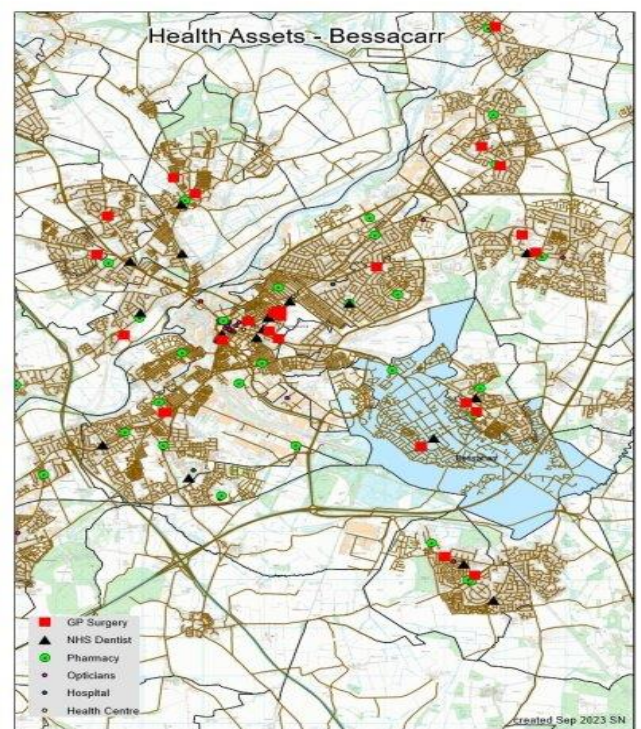


Figure 1. Cantley Business Assets

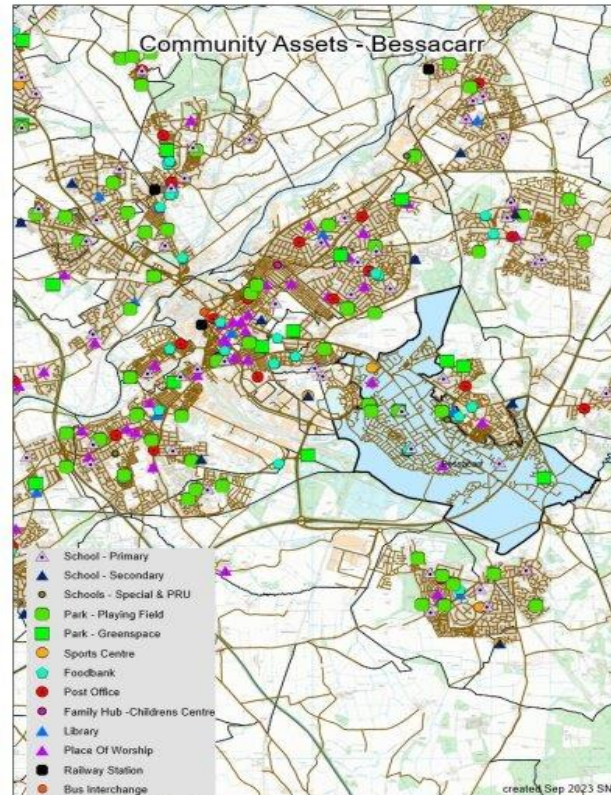


Figure 3. Cantley community health assets

It is recognised that work is needed in the community to expand the understanding of who, how and what is accessed in the area. Greater knowledge of the identity of each community/ward will allow more appropriate and effective responses to community needs.

Population Health Management

It is vital to understand the impact on the community of nationwide influencing factors such as the COVID19 pandemic and cost of living crisis as well as local and regional issues and opportunities. Understanding community organisations and other assets operating in the community helps up to ensure appropriate and targeted support can be offered, and work can be implemented to manage any gaps or risks associated with changes. Well Doncaster undertake regular population health management insight with community organisations in Intake, identifying their current status and needs, and work with each group and partners to meet their goals. This is a living document and will be updated and adapted as needs are met and change. If you would like more detail on this, please contact welldoncaster@doncaster.gov.uk

Assets in the Community

As part of a population health management approach, the following assets have been identified and themed around places and people:

People

Institutions (Schools / Colleges etc.)	Local Economy (Local Profit Business)
<p>Schools:</p> <p>Bessacarr Primary</p> <p>Willow Primary School</p> <p>Hallcross Lower School</p> <p>Health:</p> <p>Bessacarr Medical Centre</p> <p>Oakwood Surgery and Cantley Health Centre</p> <p>Religious:</p> <p>St Pauls Catholic</p> <p>St Wilfrid's Parish Church</p>	<p>Shopping:</p> <p>Nostell Place = CO-OP</p> <p>Veterinary surgery</p> <p>Pharmacist</p> <p>Bakery</p> <p>Hairdressers</p> <p>Fish & Chips shop</p> <p>Chinese Takeaway</p> <p>Off license</p> <p>Post Office</p> <p>Heron Supermarket</p> <p>Cantley DIY</p> <p>One Stop</p> <p>Toy Box Day Nursery</p> <p>Food and drinks:</p> <p>The Flying Childers</p> <p>Toby Carvery</p> <p>Hawthorn Club</p> <p>• Other (leisure):</p> <p>Cantley Community Library</p> <p>Pitch and Putt Cantley Park</p> <p>Wilby Carr Boxing and Community Centre</p>

Place

INDIVIDUALS	ASSOCIATIONS
(Key Individuals within the community and why)	Local Groups/Clubs
<ul style="list-style-type: none">• Community Leaders• Ward Members• Police, Community Support Officers• Professionals• Well Doncaster Officers	<p>Small Local Community Groups:</p> <p>Cantley Community Library</p> <p>On going work with WDO to establish more connections</p> <p>Borough Wide Support based in Town Centre:</p> <p>Sports Clubs:</p> <p>Bessacarr Golf Club</p> <p>Doncaster Lawn Tennis Club</p> <p>Other:</p>

Community Insight

Appreciative Inquiry

The Well Doncaster Team undertake Appreciative Inquiry (AI) within communities to gather insight to support co-designing action plans with the community. Armstrong (2020) suggests in his work 'A changing world, again. How Appreciative Inquiry can guide our growth' that reframing the questions to consider a crisis like Covid-19 and drawing on strengths and assets from past positive experience will help participants as they restructure their community. The AI questions are structured to pull on the successes of the past and present, to seek new potentials and possibilities and to build on those through the Dream and Design stages.

The Appreciative Inquiry will include the following steps take:

1. **Discovery Phase** – This will involve engagement with the residents of Hyde Park to find out what is working well in the community. Responses will be themed to allow priorities of the community to be established.
2. **Dream** – Residents and key stakeholders will be invited to attend an initial workshop to discuss what ideas they have for their community and how these will meet the priorities highlighted in the discovery phase.
3. **Design** – All attendees are invited back for a second workshop to develop an action plan to direct work for the community.
4. **Destiny** – A collaborative way of working and investing resources to meet the actions from the previous phase.

Community insight gathering has been ongoing in Cantley and Bessacarr ward since 2019. All responses have undergone a thematic analysis, and themes have emerged indicating key assets and strengths in the community. Insight has been gathered through multiple resident engagements including community events, Future Parks Surveys in collaboration with Get Doncaster Moving, focus groups and one to one conversations. Themes from the most recent Thematical Framework are shared below with commentary summarising resident's quotes in Cantley. The framework has been created from 78 conversations with residents from 2022 to March 2025.

Theme	Sub theme	Quotes	Commentary
Sense of Community	Belonging and Identity	"Community spirit" (CANP1)	Residents in Cantley have spoken consistently about a sense of togetherness and community spirit since 2022. This remained a prominent theme through 2023 and 2024 with residents sharing that they like the peaceful and supportive neighbourhood. Residents have spoken about how they feel welcome.
	Social connection & Support	"We have a sense of community" (ID2281)	
	Volunteering, Civic Engagement & Pride	"Good neighbours, a very good community" (CANP2)	Residents have shared a growing sense of pride in belonging to the community and a shared commitment to the wellbeing of the area. There is a shared identity and emotional attachment to the community, suggesting that residents feel they are part of something larger than themselves.
		"Nice community - people friendly" (CANP11)	
		"Having people to talk to" (CANP2)	Conversations highlight the friendliness of residents, which is a key indicator of social cohesion. These emphasise interpersonal relationships and the emotional and practical support that residents receive from one another.
		"People good to me. Neighbours help when we need. Nice to talk to others" (CANP4)	
		"Friendly people and good neighbours" (CANP3)	In conversations across 2024-25, residents of noticed recent positive improvement in terms of opportunities and activities available in Cantley and that they value the opportunities to socialise together.
		"People are friendly, and my granddaughters live there." (ID2281)	
		"We can proudly say that we (Community Library) have 30 volunteers..." (#168)	Conversations express a collective identity. These statements suggest pride in belonging and a shared commitment to the wellbeing of the area. These quotes reflect a shared identity and emotional attachment to the community, suggesting that residents feel they are part of something larger than themselves.
			This framework is reinforced by highlighting the friendliness of residents, which is a key indicator of social cohesion. These emphasise interpersonal relationships and the emotional and practical support that residents receive from one another.
			These interactions are foundational to a strong community network.

			<p>Statements reflect both emotional warmth and reliability, reinforcing the idea that people feel cared for and connected.</p> <p>The long-term volunteering at the Community Library illustrates active participation and pride in contributing to the community. It shows that community spirit is not only felt but also enacted through volunteering and long-term commitment.</p>
Safety & Security	<p>Perceived Safety</p> <p>Trust in Neighbours</p>	<p>"Quiet, safe area - not much crime or vandalism" (CANP11)</p> <p>"Feel safe, not worrying about people that could cause harm" (CANP11)</p> <p>"No problems with people living around me, nice neighbours" (CANP8)</p>	<p>Sense of safety was another valuable part of the community responses in 2023. Cantley residents feel safe in their local community.</p> <p>Residents like the peaceful and supportive neighbourhood.</p> <p>Quotes highlight a strong sense of security. These perceptions contribute to residents' comfort and willingness to engage in community life. They suggest a lack of conflict and a sense of trust, which are crucial for feeling safe in one's immediate environment.</p>
Family and Children	<p>Youth Engagement</p> <p>Presence of Children</p> <p>Green spaces</p>	<p>"Community feel, lots of children about" (CANP11)</p> <p>"Gives kids something to do" (CANP12)</p> <p>"Area for youths" (CANP13)</p> <p>"People are friendly, and my granddaughters live there." (ID2281)</p>	<p>Parks and their playgrounds used to keep children physically active, were an important part of the residents' responses in 2023.</p> <p>Insight from the conversations in 2024 show, residents value environment and spaces for keeping themselves and children busy. They utilise a park on Goodison Blvd, Cantley Park & Woods. They appreciate time to be outside, fresh air and time to enjoy with friends and family. There is a feeling that that places are accessible. They like to be outside to be active, walk and enjoy time with their families and friends.</p> <p>Insight shows that the presence of children and youth-oriented amenities are seen as signs of a healthy, vibrant community. Having areas for youth implies that there are designated spaces or activities for young people, which can reduce anti-social behaviour and foster inclusion. The insight shows how family ties enhance the sense of belonging and satisfaction with the area.</p>
Longevity & belonging	<p>Long-Term Residency</p> <p>Comfort & Leisure</p>	<p>"I've lived in my community for 69 years..." (I4693)</p> <p>"It's a place I feel safe and spend time with my friends. It's clean and there are nice places to sit and relax." (I4693)</p>	<p>These statements speak to a lifetime of experiences and memories, suggesting a profound attachment to place. This long-term perspective adds weight to the resident's positive views on safety, cleanliness, and leisure.</p> <p>The quotes emphasize how the physical and social environment contributes to a sense of peace and belonging.</p>

Doncaster Talks

In 2019, Doncaster Talks undertook an insight across the borough of Doncaster. Responses were separated into wards and thematically analysed. Across Bessacarr, there were 107 responses recorded. The main themes on what people liked about the area, what could be improved, and what the borough should focus on are displayed in the table below.



Like

- Safe and quiet
- Parks and greenspaces including benefit to health and wellbeing
- Access to amenities e.g. lakeside and town centre
- Good transport links e.g. motorways & airport

Improve

- ASB related to substance misuse and homelessness – feeling of safety
- Town centre empty shops and regeneration
- Cleanliness and litter

Focus

- Town Centre regeneration, improvement
- Crime, ASB, policing
- Community cohesion, and include younger people and older people – facilities and connections

Ward Members

Below are the ward members for Bessacarr following the 2025 elections.



Councillor Nick Allen
Bessacarr
Conservative



Councillor David Carroll
Bessacarr
Reform UK



Councillor Chris Kidger
Bessacarr
Reform UK

Health and Wealth Inequalities

Wealth Inequalities

Health inequalities are avoidable differences across the population, and between different groups within society. Health inequalities arise from the conditions in which we live, work and play. These conditions influence our opportunities for good health, how we think, feel and act, therefore shaping our health and wellbeing.

Deprivation

Evidence shows that people living in our most deprived areas face the worse health inequalities in relation to health access, experiences and outcomes. Deprivation covers a range of issues and refers to unmet needs caused by a lack of resources, including but not limited to finances, housing and education. The Indices of Multiple Deprivation (IMD) is a measure of relative deprivation used to compare smaller geographical areas. New data for 2025 shows that Cantley has an IMD score of 27.87,

ranking 34th out of 88 Doncaster communities. Cantley has reduced its IMD rank among other Doncaster communities from 19th in 2019 to 34th in 2025.

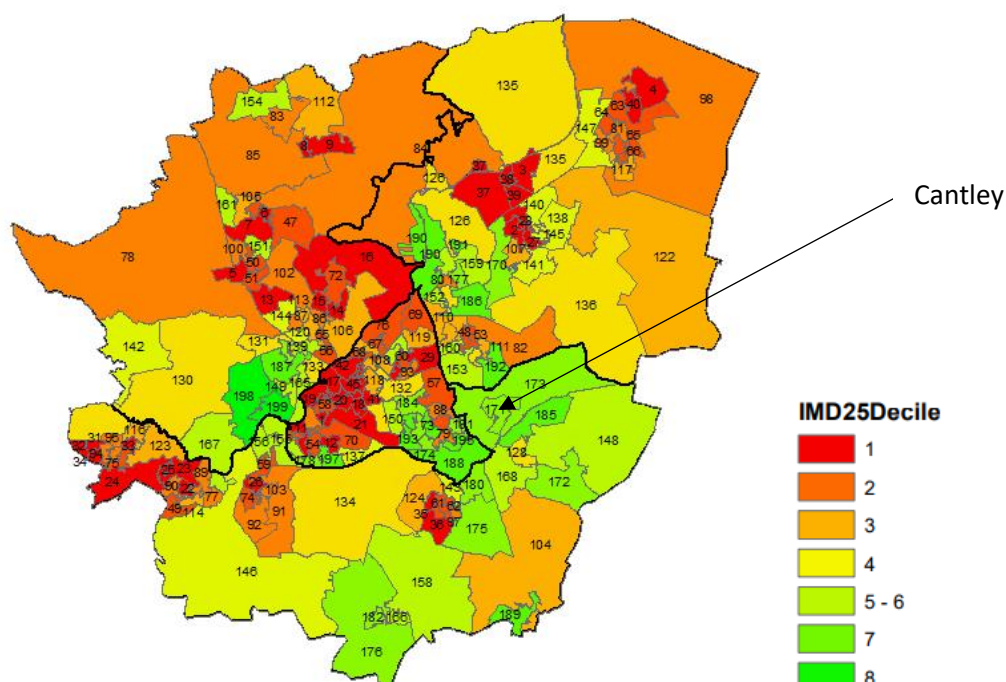


Figure 4. Index of Multiple Deprivation Deciles by LSOA 2025 – Doncaster (ONS, 2025)

The 2021 Census data has classified households in England and Wales by four dimensions of deprivation: employment, education, health and disability and household overcrowding.

39.4% of households in Cantley are not deprived in any dimensions which is lower than Doncaster (43.7%) and England (48.4%). However, 35.2% of households are deprived in two dimensions, higher than Doncaster (16.7%) and England (14.2%) and households deprived in three dimensions (5.6%) is also higher than Doncaster (4.6%) and England (3.7%). There are 0.2% residents living in all four dimensions of deprivation, higher than Doncaster's average of 0.2%.

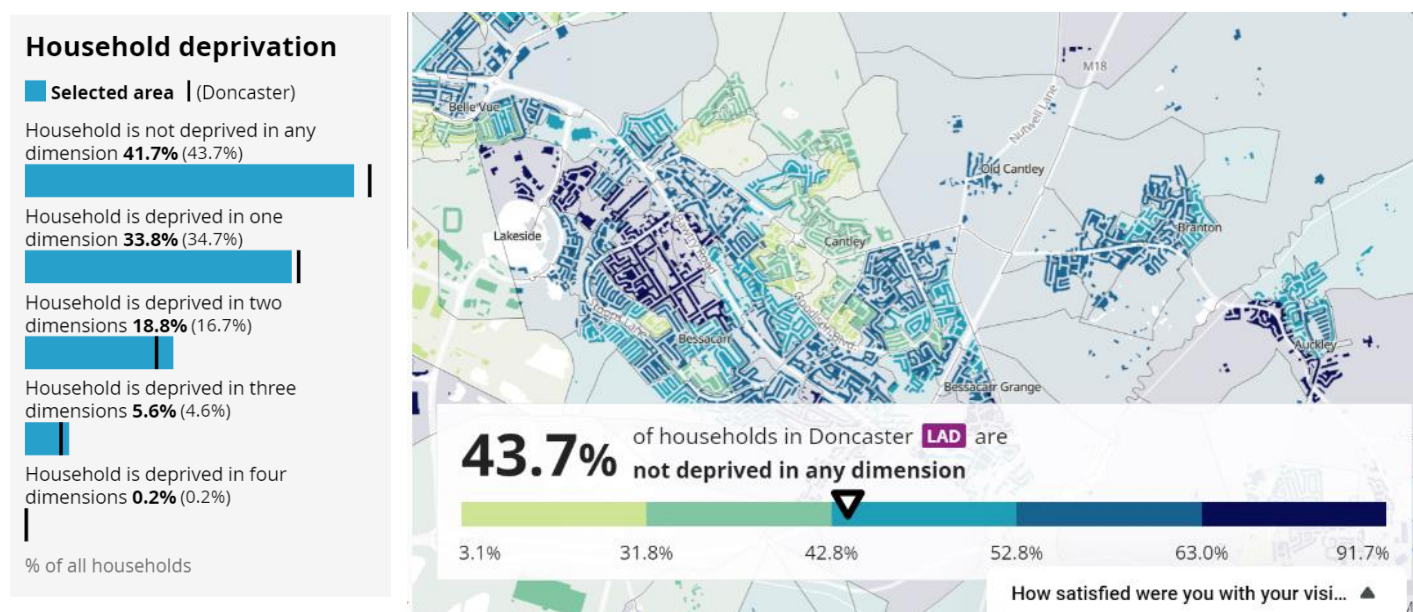


Figure 5. Household Deprivation Doncaster, Census, 2021

In 2025, 31.5% of Cantley Park Middle-Layer Super Output Area (MSOA) residents are experiencing poverty, similar to the Doncaster average of 29.3%. This is a significant increase from 2019, where 18.5% of Cantley Park MSOA residents were living in poverty.

The proportion of older people in poverty in Cantley Park MSOA (24.5%) is higher than the Doncaster rate (19.4%), similarly to all people, this has increased (from 18%) since 2019.

Furthermore, 43.8% of children are living in poverty in Cantley Park MSOA, similar to the Doncaster average, 47.1%, an increase from 24.1% in 2019.

When considering the change from 2019 to 2025 data, it is important to note that there have been changes to the calculation of the source data, the income deprivation domain in the Indices of Multiple Deprivation. While it can be inferred that there has been an increase in the proportion of people living in poverty, the changes in this indicator may contribute to the significance of this change.

At community level, the data differs slightly, with 29.6% of Cantley residents experiencing poverty, 21.3% of older people and 43.6% of children.

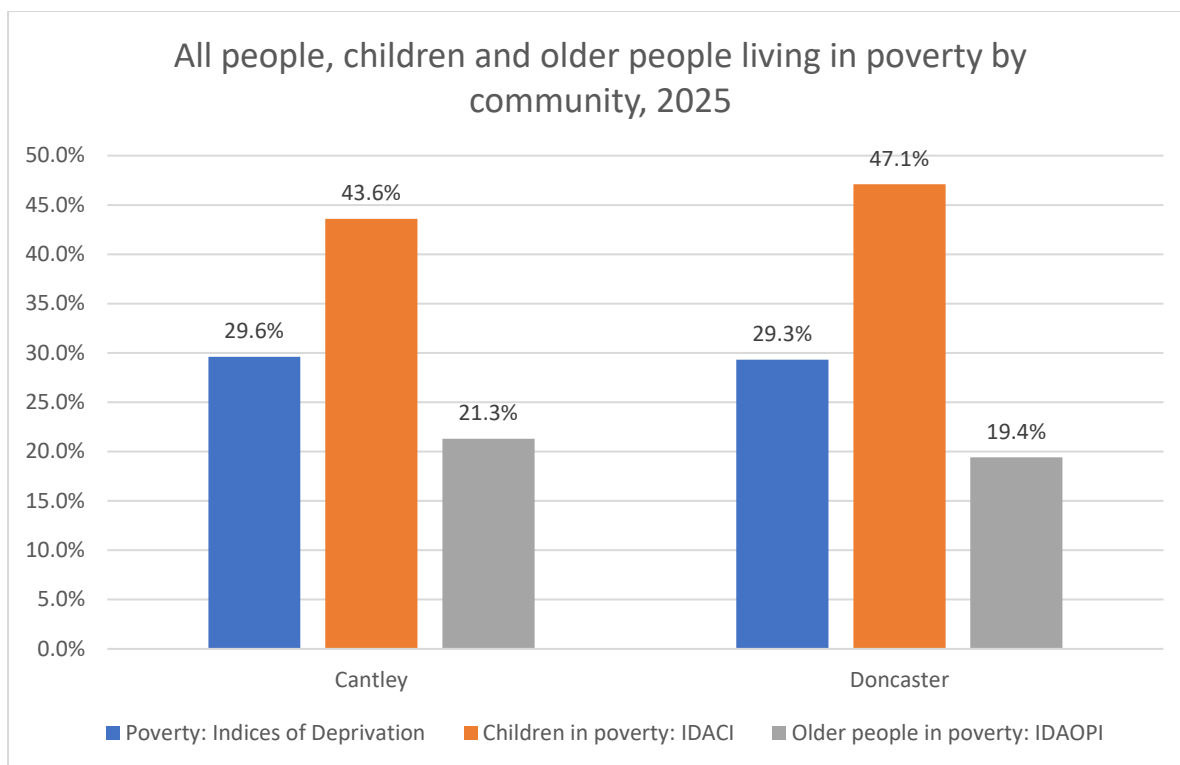


Figure 6. Poverty prevalence using IMD25, ONS, 2025

Employment

Employment rates in Bessacarr Ward (54.8%) and Cantley (51.6%) are not significantly different to Doncaster (54.9%) and England (57.4%). The Census 2021 data shows that 27.5% of Cantley have never worked is in line with Doncaster (27.2%) and England (25.6%). Bessacarr ward has significantly lower rates of Universal Credit claimants (2.7%) than Doncaster (4.46%).

In Cantley, most people work full time (59.3%) which is similar to that of Doncaster (60.7%) and England (59.1%). Of those in employment 14% are in professional occupations which is higher than Doncaster (12.8%) but significantly lower than England (20.3%). Cantley has more residents with a Level 4 qualification than Doncaster and less residents with no qualifications. Those with no qualifications are located in pockets of streets across the community. Cantley has a high percentage of economically inactive residents standing at 42.4, that is those over the age of 16 who are not employed and not seeking employment opportunities.

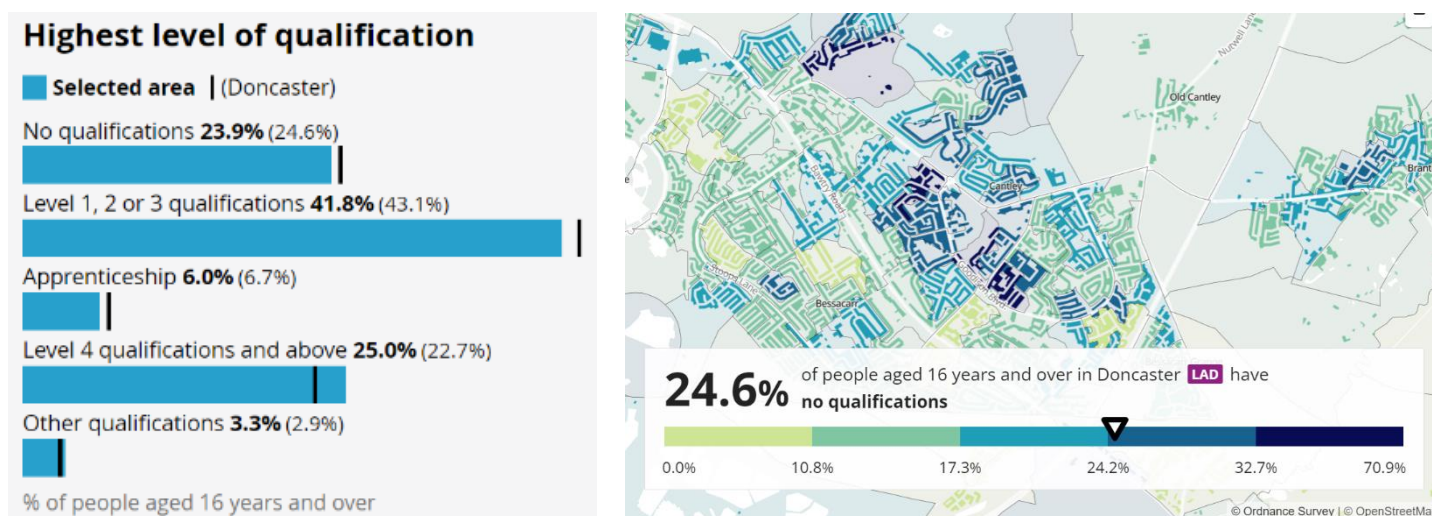


Figure 7. Canley's Highest level of Qualification, Census 2021

Fuel Poverty

Fuel poverty is directly linked to energy efficiency, energy prices and household income. Fuel poverty is distinct from general poverty: not all poor households are fuel poor, and some households would not normally be considered poor but could be pushed into fuel poverty if they have high energy costs. Evidence shows that living in cold homes is associated with poor health outcomes and an increased risk of morbidity and mortality for all age groups; furthermore, studies have shown that more than one in five (21.5%) excess winter deaths in England and Wales are attributable to the coldest quarter of housing.

Modelled estimates of the proportion of households in fuel poverty shows that 18.8% of households in Doncaster are living in fuel poverty. 13.7% of households in the Bessacarr ward are experiencing fuel poverty, in line with the Doncaster and England (13.2%) rate.

The graphic below illustrates wards ranked by households in fuel poverty and shows Bessacarr ward falls outside the top fifteen most effected by fuel poverty.

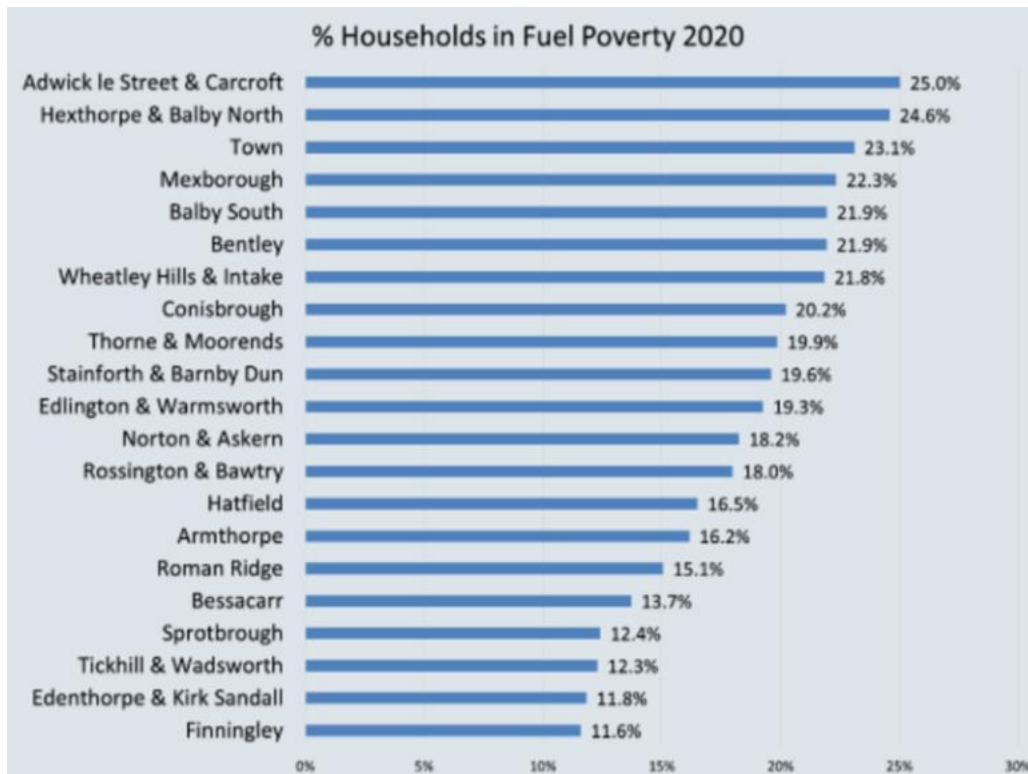


Figure 8. Households in fuel poverty ranked by ward ONS, 2020

Food Poverty

There are 7 active foodbanks in the Central locality of Doncaster. Across fiscal years 2024-2025 Central foodbanks supported 5102 individuals, 2333 single parents, 4170 families, 1488 couples and 91 'other' and ranked as the highest locality for relative level of foodbank support. The most recent data from 2025 shows that across the Central foodbanks the highest number of people supported by type, were individuals and single parents. This has changed from fiscal year 2024-2025 data where there were significantly more couples seeking support. The closest foodbank to residents in Bessacarr is located at Cantley Neighbourhood Centre and supports Cantley and Bessacarr residents.

The most recent foodbank data from 2025 shows the top five reasons for accessing foodbanks across the borough are: cost of living (602 residents), low income (524 residents), benefits delay (468 residents), debt (456 residents) and benefit changes (447 residents). The table below shows a tree map chart showing an overview of the reasons residents are requiring foodbank support.

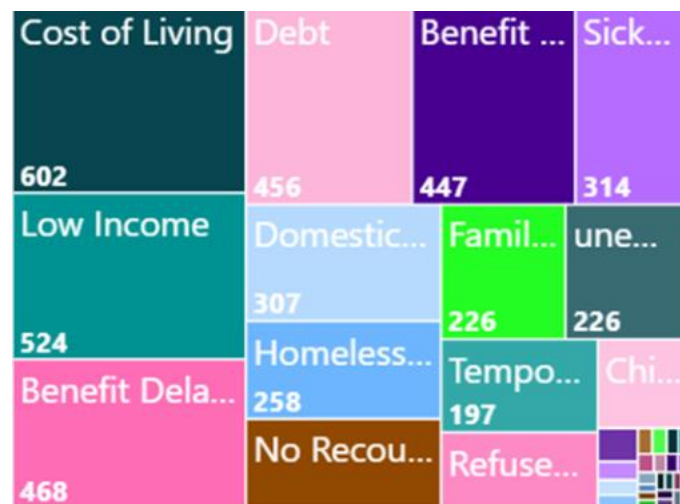


Figure 9. Reasons residents are accessing foodbank support, City of Doncaster Council, 2025

The Bread-and-Butter Thing

There are five Bread and Butter Thing (TBBT) Hubs based in the following communities across the borough: Mexborough, Rossington, Carcroft, Thorne and Hexthorpe. Each site offers 80 residents the opportunity to access affordable food, ensuring 400 residents per week get the help they need. The purpose is to reduce poverty premiums that families in low-income areas can face, to reduce waste by identifying edible surplus food in the UK food sector and redistributing it and to build resilience within the communities.

The mobile food hub gives access to nutritious and affordable food taken into the heart of communities starved of money, food, and resources. The food parcels are based on a weekly shop providing essential produce for families including fresh fruit and veg, chilled goods and cupboard staples. By discounting a family's shopping, a members average weekly saving is £26.50. TBBT provides residents with food parcels from surplus food at an affordable price and aims to help people move up the food ladder by acting as a financial bridge and helping with cost of living. Although TBBT is not close to residents in Bessacarr, it's open to any residents in Doncaster and may provide support to people from postcodes boroughwide.

The King's Cross Church in Hexthorpe operates the TBBT hub in the central locality in 2024 across the five sites, 3241 residents accessed TBBT, and 1596 volunteering opportunities were filled. The map below shows the postcode areas of residents in Central Doncaster accessing TBBT throughout fiscal year 2024/25 and indicates dense clusters in areas of higher deprivation including Intake, Wheatley, City Centre, Clay Lane, Hexthorpe and Balby with some postcodes accumulated in less deprived areas such as Cantley and Bessacarr. The access data suggests residents from various areas in Central Doncaster are receiving support from discounted food parcels via TBBT, but particularly residents from more deprived communities.

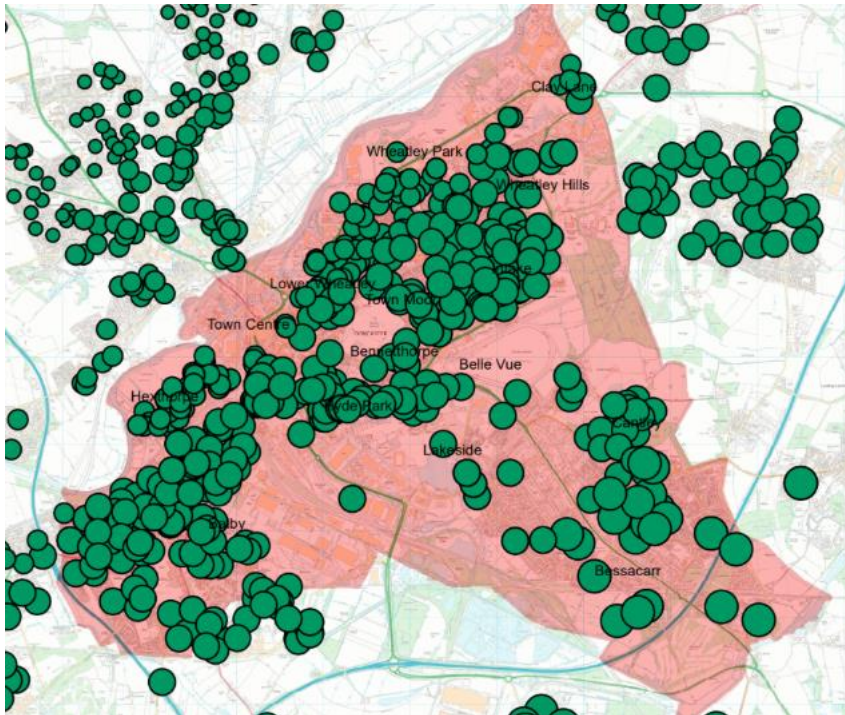


Figure 10. Postcode map showing residents accessing The Bread and Butter throughout fiscal year 2024/25, The Bread and Butter Thing, 2025

Citizens Advice Doncaster Borough

Citizens Advice Doncaster Borough (CADB) is an independent, local charity and a member of the Citizens Advice network. They provide free advice and support to meet the needs of communities. This includes advice on a range of problems, such as with work, debt, benefits, immigration, housing and more.

In 2022 CADB established a network of community-based outreach sites where residents can access free, impartial information, advice, and guidance. There is an outreach site located in the Bessacarr ward at Cantley Community Library.

In the Fiscal Year 2024/25 data shows that in Bessacarr ward, 148 clients were supported across 108 postcodes. The total income gain for the city, that is the amount of additional income that a client receives because of support or intervention from CADB, has increased to £20,616,502 as of 2025 with £196,972 generated in latest full fiscal year 2024/25 in Bessacarr ward. The postcode map below indicates where residents are accessing support from Bessacarr ward. The purple dots represent the postcodes of clients accessing support throughout fiscal year 2024/25 in Bessacarr showing an even spread across the north part of Bessacarr into Cantley.

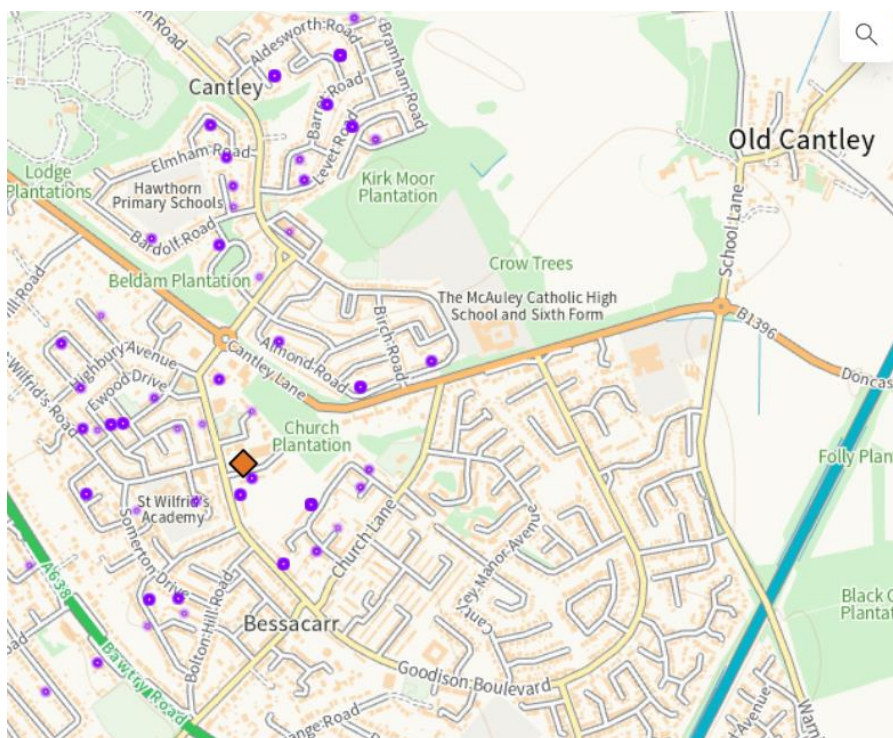


Figure 11. Postcodes of Citizens Advice Doncaster Borough Clients accessing support for fiscal year 2024/25, Citizens Advice Doncaster Borough, 2025

The top five reasons residents from Bessacarr ward access support are: debt, benefits and tax credits, utilities and communications, benefits universal credit and lastly consumer goods and services. More specifically in Bessacarr ward, residents report general benefit entitlement as the primary reason for seeking support. Bessacarr ward ranks as the fourth highest ward in the Central locality seeking support from CABD. The table below shows a breakdown of CABD data comparing Bessacarr ward to the other top five Central wards accessing support through CABD.

Data collation information	Town			Wheatley and Intake			Hexthorpe and Balby North			Bessacarr			Balby South		
	22/23	23/24	24/25	22/23	23/24	24/25	22/23	23/24	24/25	22/23	23/24	24/25	22/23	23/24	24/25
Clients	463	617	421	318	408	237	283	434	349	142	183	148	133	159	140
Postcodes covered	230	272	228	181	197	152	133	174	142	93	115	108	80	102	79
Top Issue for advice/info	Debt	Debt	Debt	Debt	Debt	Debt	Debt	Debt	Debt	Debt	Debt	Debt	Debt	Debt	Debt
Total Income gain	£239,509	£742,292	£333,828	£171,071	£589,869	£219,038	£243,610	£561,915	£284,999	£87,008	£270,573	£196,972	£63,323	£290,520	£302,413

Table 1. CABD figures for fiscal year 2024/25 showing the top 5 Central wards seeking support, Citizens Advice Doncaster Borough, 2025

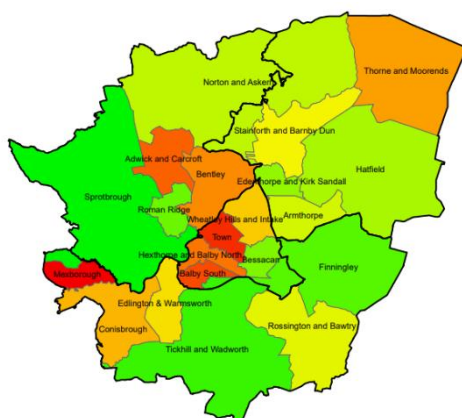
Health Inequalities

Life Expectancy

Life expectancies in males (80.9 y) and females (84.7) living in Bessacarr ward is significantly higher than Doncaster (*m*: 77.9, *f*: 81.3) and England (*m*: 79.5, *f*: 83.2). Healthy life expectancy in Bessacarr ward is 65.9 years for Males and 66.8 years for Females. Both are higher than the Doncaster average of 57 years for Males and 56 years for Females. Bessacarr ward also has higher healthy life expectancy than national averages which is 61.5 for Males and 61.9 for Females (ONS 2021-23).

Life Expectancy at Birth by Ward - Male

Ward	Male-Age
Sprotbrough	82.72
Tickhill and Wadworth	82.06
Finningley	81.24
Roman Ridge	80.11
Bessacarr	79.93
Edenthorpe and Kirk Sandall	79.10
Hatfield	78.85
Norton and Askern	78.51
Armthorpe	78.47
Rossington and Bawtry	77.72
Stainforth and Barnby Dun	77.71
Edlington & Warmsworth	77.33
Wheatley Hills and Intake	77.29
Conisbrough	76.25
Thorne and Moorends	75.93
Bentley	75.87
Hexthorpe and Balby North	75.65
Adwick & Carcroft	74.98
Balby South	74.93
Town	74.67
Mexborough	74.14



Life Expectancy at Birth by Ward - Female

Ward	Female-Age
Roman Ridge	87.16
Edenthorpe and Kirk Sandall	84.57
Bessacarr	83.83
Tickhill and Wadworth	83.76
Finningley	83.69
Sprotbrough	83.25
Norton and Askern	82.81
Hatfield	81.78
Stainforth and Barnby Dun	81.66
Wheatley Hills and Intake	81.57
Edlington & Warmsworth	81.34
Bentley	80.25
Balby South	79.90
Town	79.72
Armthorpe	79.65
Mexborough	79.55
Rossington and Bawtry	79.53
Conisbrough	79.50
Hexthorpe and Balby North	79.41
Thorne and Moorends	78.88
Adwick & Carcroft	78.30

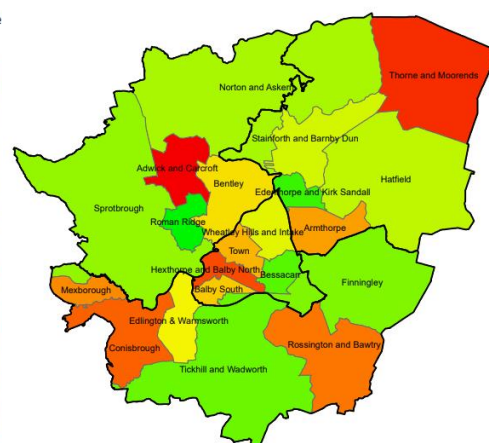


Figure 12. Life Expectancy at Birth for Men and Women, ONS, 2023

Long-Term Health Conditions

In Cantley 41.9% of residents reported living in 'very good health', slightly lower than Doncaster (44.3%). The percentage of people who reported good health was similar to Doncaster at 34.3% and 34.1 respectively. Additionally, more people in Cantley reported living in bad health (5.37%) than Doncaster (5.3%) and 2% reported very bad health compared to Doncaster's 1.6%.

Emergency hospital admissions largely associated with health conditions related to poor lifestyle choices are also more likely across those severely deprived communities. As you can see Bessacarr ward has lower hospital admissions for key health conditions compared to Doncaster and is generally in line with the national rates.

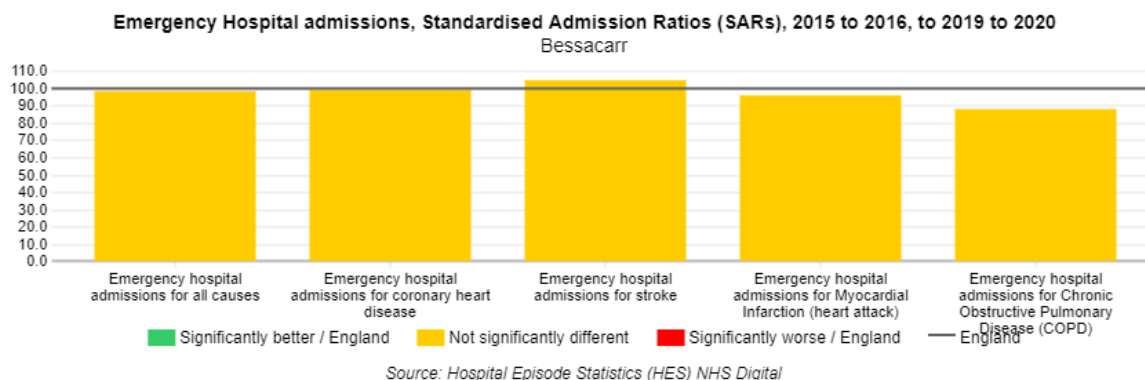


Figure 13. Emergency Hospital Admissions -Bessacarr 2016/17-20/21 ONS, 2020

Incidence of Death

Causes of death ratios from all causes in the Bessacarr ward are significantly lower than nationally. The mortality ratio in Bessacarr ward for deaths from other causes including cancer, circulatory disease, coronary heart disease, stroke and respiratory diseases are not significantly different to England, indicated in figure 14.

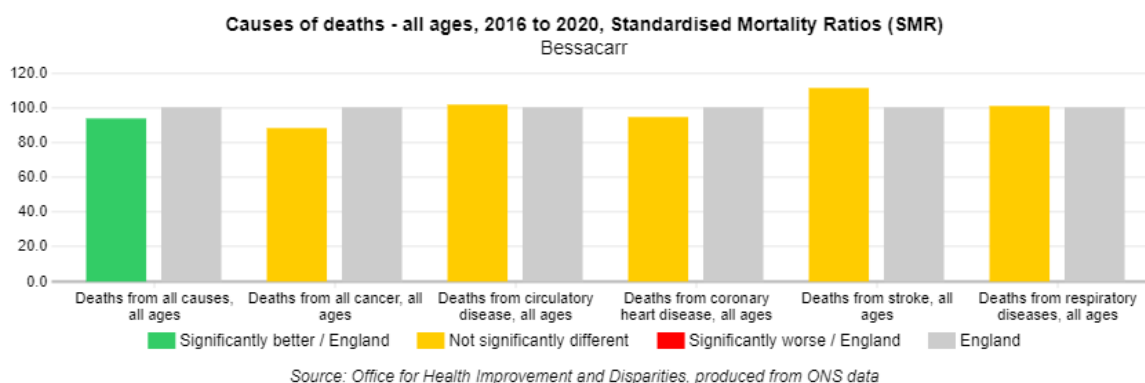


Figure 14. Causes of Death- Bessacarr ward, ONS, 2020

Alcohol

The data supplied by Public Health Fingertips data shows that Bessacarr is the 6th lowest ward of Doncaster with hospital admissions of alcohol attributable conditions (broad definition). Bessacarr has a ISR of 98.6/100, lower than Doncaster at 112.7/100, where England is used as the reference population (100/100).

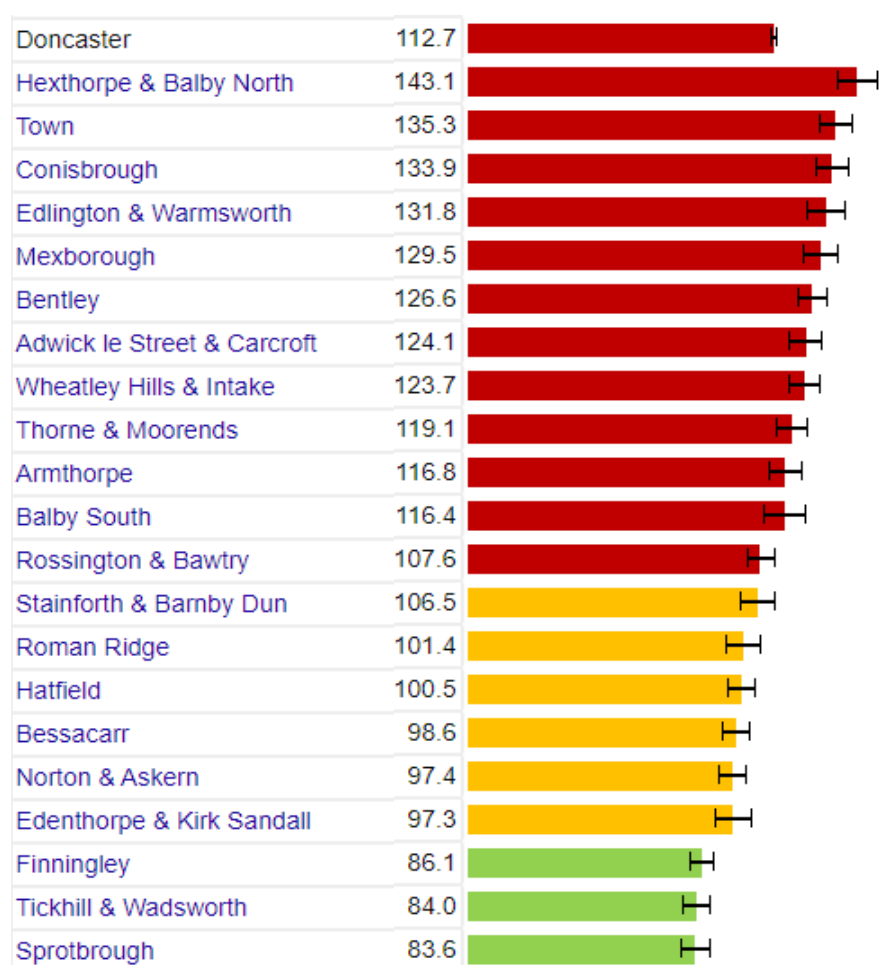


Figure 15. Alcohol admissions by ward 2016/17-20/21, ONS, 2021

Smoking

Data from Action on Smoking and Health (ASH, 2024), indicates smoking rates in Bessacarr ward stand at 10.1%. This is lower than the Doncaster (15.7%) and England (10.4%) rates.

Action on ASH estimates smoking costs Doncaster £335 million per year, the combined cost of smoking-related medical treatment via hospital admission and primary care services is £16.5 million. Social care costs due to smoking amounts to an estimated £115 million annually in Doncaster with the majority being lost to informal care costs from friends and family (£64.3 million).

In Bessacarr ward, the gross annual cost of smoking as of Spring 2024 was £9.75 million and 10.1% of the ward's population are smokers (the fourth lowest ward across the borough). An estimated £2.95 million is spent annually on Tobacco products in Bessacarr ward and the national average spend on tobacco per smoker now stands at £2486. Smoking has a significant impact on employment and productivity, in Bessacarr the total cost due to lost productivity from smoking was

estimated at £5.48 million which is lower than the borough average of £6.5M (ASH 2024).

Childhood Development

A child's early experiences are vital in providing the foundations for children to develop healthily and happily. Children being born into deprivation and living amongst deprivation in their early years are more likely to experience a wide range of health problems, fall behind their peers and face employment problems in adult life. The quality of early experiences is important as children develop, providing opportunity for motor (physical), intellectual (language and communication), cognitive and socio-emotional development.

The Income Deprivation Affecting Children Index (IDACI) measures the proportion of all children aged 0 to 15 living in income deprived families. In Cantley, 43.6% of children are classed as living in child poverty, this is similar to the Doncaster rate (47.1%).

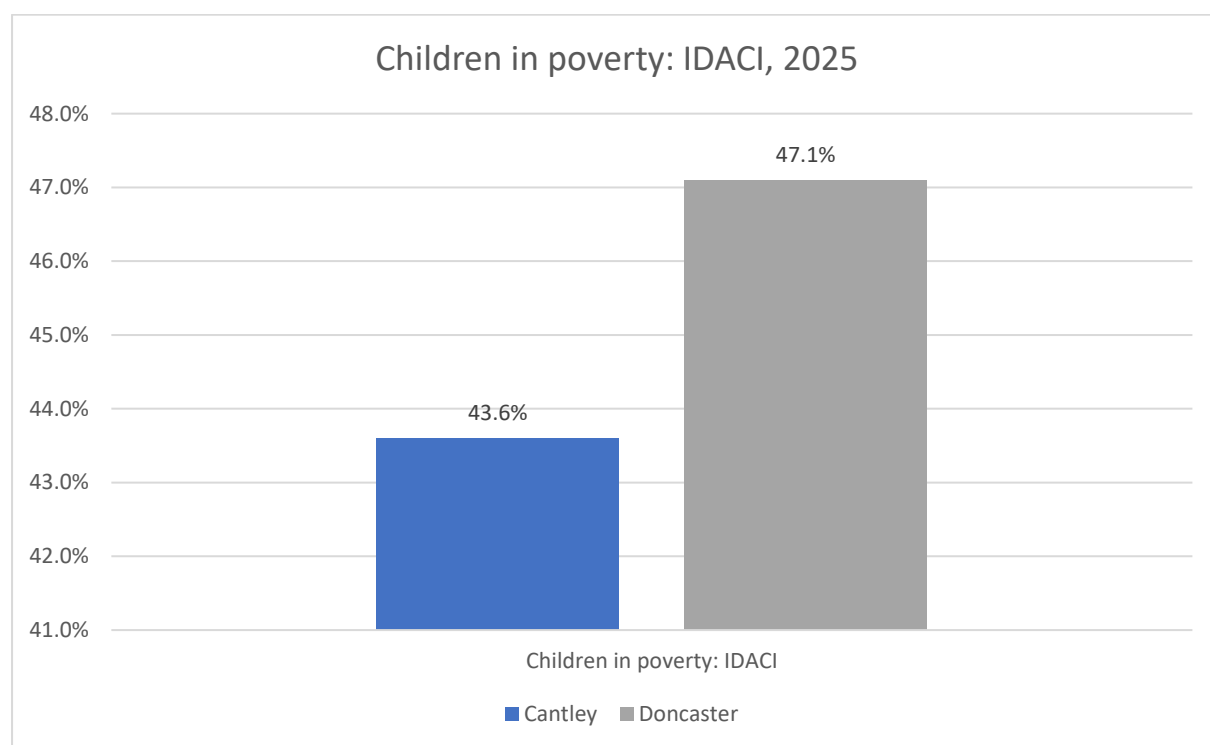


Figure 16. Income Deprivation Affecting Children Index (IDACI) (aged 0 to 15) ONS, 2025

Having the best start in life can impact future health and wellbeing outcomes. In Bessacarr ward 7.9% of babies born after 37 weeks are classified as weighing less than 5.5 lbs or 2.5kg compared to only 6.8% in England and is not classed as significantly different.

Healthy development milestones from early to middle childhood are monitored across Doncaster. Children classified as overweight (including obese) in reception is lower in Bessacarr (24.7%) compared to Doncaster (25.8%) but higher than England (21.9%). Figure 9 indicates childhood overweight and obesity comparing Bessacarr

ward to Doncaster and England at Reception and Year 6. Bessacarr has fewer overweight and obese children compared to Doncaster. When comparing against national rates, Bessacarr also has lower levels of overweight and obesity, excluding overweight children at reception age.

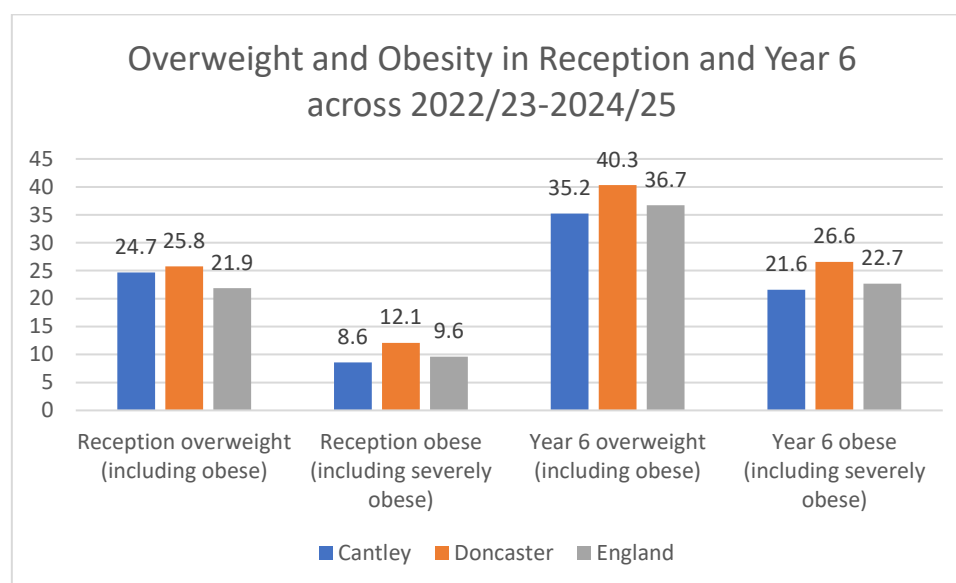


Figure 17. Overweight and obesity in reception and Year 6 age children across years 2022/23-2024/25 Cantley and Bessacarr ward, ONS, 2025

Emergency Hospital admissions in children under 5 years old in Bessacarr are significantly lower than Doncaster. There is no significant difference in emergency admissions for injuries in children under 5 and under 15 and for emergency hospital admissions for children under 15.

School Attainment

The Department for Education supplies each local authority with the school attainment grades for those in Key Stage 2 (KS2) and Key Stage 4 (KS4).

At KS2, in 2022 39% of pupils achieved the expected standard in reading, writing and mathematics in Cantley compared to 56% across Doncaster and 59% nationally. In 2023, expected grades achieved at KS2 increased to 44% in Cantley, but remained lower than Doncaster (55%) and national (60%) averages. 2024 results showed another increase from previous years in Cantley with 45% of pupils reaching expected scores. However, this falls short of Doncaster (59%) and national (61%) standards.

At KS4, each pupil is given an Attainment 8 score (a score out of 90) based on their 8 best GCSE grades including English, maths and at least 3 other traditional academic GCSEs (sciences, languages, and humanities). Other qualifications at an equivalent level (e.g. BTECs) can also count towards the score. In 2022, the average GCSE attainment 8 score per pupil (out of 90) was 43.8 in Cantley, this is lower than

Doncaster (44.9) and national scores (48.8). In 2022 the results had a slight decrease at an average of 43.4 for Cantley pupils, which remained lower than Doncaster (44.4) and national scores (46.3). Most recently in 2024, Cantley achieved an average score of 39.9, lower than Doncaster (44) and national scores (45.9). Cantley has scored below the local and national rates for the last few years and sits below the average attainment level at KS4.

There are 28 children in Cantley recorded as receiving Elective Home Education, and two children are recorded as missing from education.

Pupil Lifestyle Survey

The Pupil Lifestyle Survey is conducted by Doncaster City Council to provide valuable data on children and young people's health-related behaviour, through an anonymous school-based questionnaire. Data from the survey has provided a set of Doncaster-wide figures at key points in children and young people's development; KS2, 3 and 4. The 2024 Pupil Lifestyle Survey had 3810 participants with 119 from Bessacarr ward. Bessacarr had a relatively equal split of boys and girls take part, with 49% and 47% respectively. 68% of pupils reported themselves as white ethnicity and 27% as ethnic minority. 34% of pupils reported English as their second language, the fourth highest ward in the borough, and significantly higher than Doncaster (23%).

The 2024 Pupil Lifestyle Survey indicated 12% of students as having a long-standing illness, lower than Doncaster (14%). 13% reported having a disability, higher than the Doncaster average (9%).

When looking at data on healthy eating and wellbeing, Bessacarr reported higher numbers of pupils that have breakfast (96%) compared to Doncaster (86%) and fewer students have free school meals (16%) compared to the Doncaster average (19%).

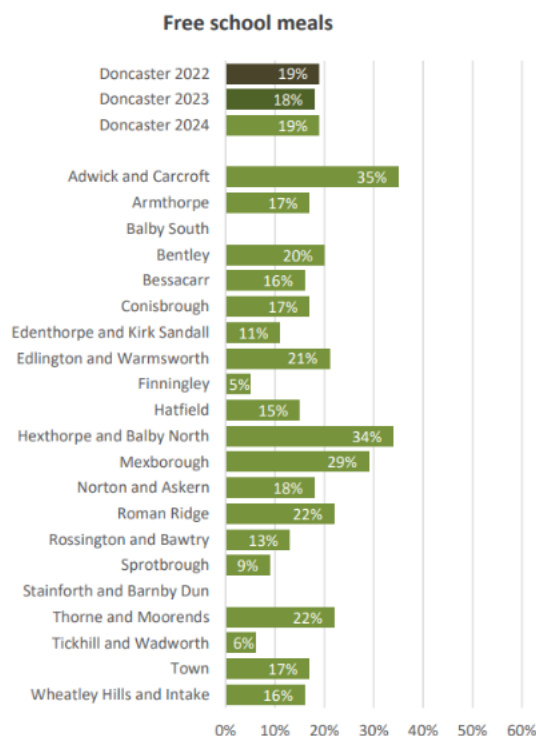


Figure 18. Free school meals, Pupil Lifestyle Survey 2024

Pupils from Bessacarr ward had the lowest percentage of pupils that had taken days off in the last year according to 2024 data. This was 32% in Bessacarr ward compared to 56% of pupils across the borough. Figure X below, shows the comparison by ward.

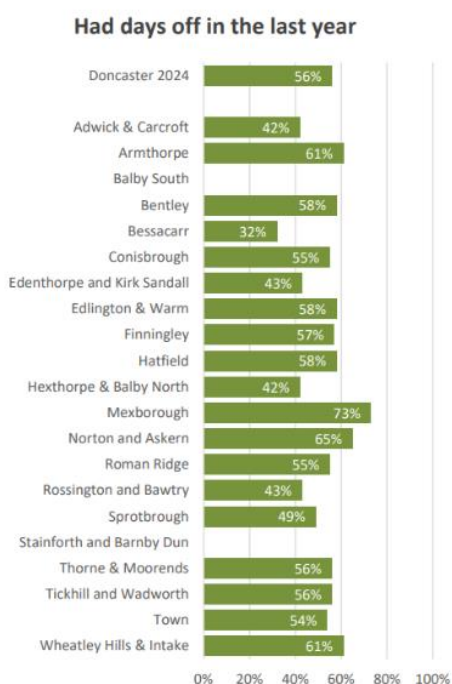


Figure 19. Percentage of pupil who have taken a day off school in the last year. Pupil Lifestyle Survey 2024.

Only 62% of pupils in Bessacarr feel they get love and support at home compared to 77% on average for Doncaster. Bessacarr was the lowest reported ward across the borough. Bullying is reported to be higher in Bessacarr ward with 32% experiencing bullying in the last 12 months compared to 28% for Doncaster. Conversely, 73% of Bessacarr pupils felt that their school takes bullying seriously, the highest response across the borough.

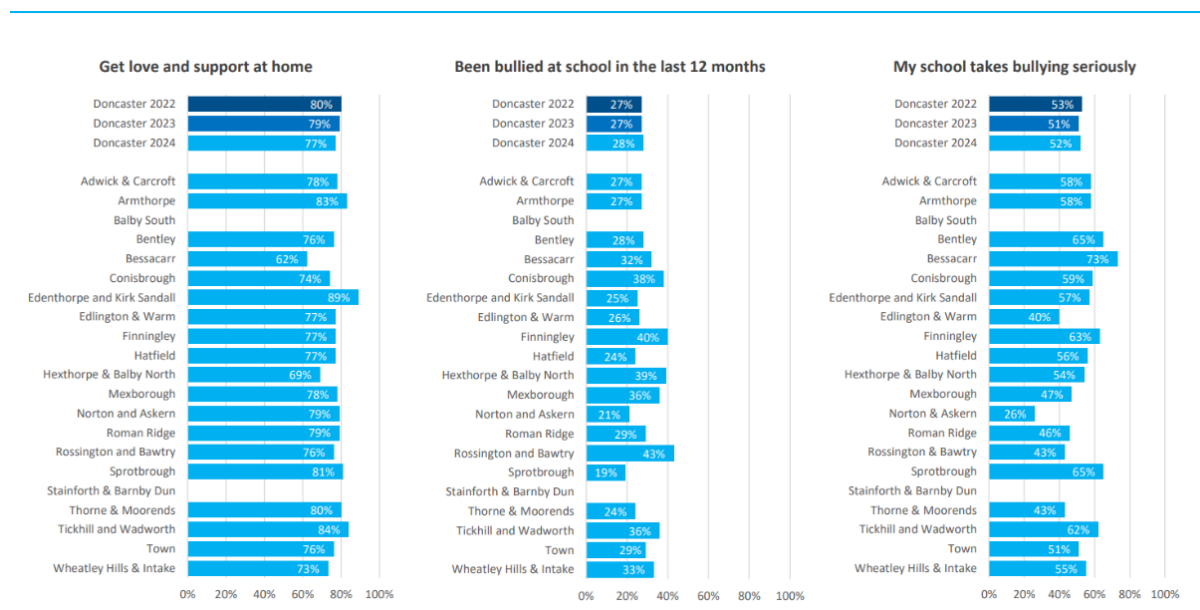


Figure 20. responses on bullying, Pupil Lifestyle Survey 2024

When asked about safety in the community, Bessacarr ward had the second lowest percentage of pupils that have seen knives used as a threat (11%) compared to other wards, the Doncaster average stands at 21%.

Family Hubs

Family Hubs are local, community based, centres that offer integrated services for families from the early stages of life covering conception and early childhood up to adolescence, and up to age 25 for individuals with special educational needs and disabilities (SEND). Family Hubs offer early years and parental support including antenatal and postnatal care, baby and toddler classes, infant feeding, parenting programmes, SEND pathways and specialist support for mental health, domestic abuse, welfare and substance misuse. Family Hubs provide welcoming community spaces for families, bringing together education, health, social care, and wellbeing services in one facility and cater for a broad spectrum of needs. There are twelve Family Hubs across Doncaster, with three located in the Central locality which include Central, Balby and Wheatley Family Hubs.

Membership data shows the percentage of eligible children signed up to Family Hubs. In Q4 of fiscal year 2024-2025 membership of children in Cantley was 40% for

children aged 0-8 weeks, 54% for 0-1 year and 11-month-old children and 65% for children aged between 0-4 years and 11 months. In comparison, average membership across all Family Hubs in Central across all ages for fiscal year 2024-2025 was 84%. Cantley's most recent membership figures from Q4 of fiscal year 2024-2025 falls lower than this across all ages.

Access data includes the percentage of children using Family Hubs services once or twice and engagement figures indicate the number of children seen three or more times.

Access data from the most recently available period (Q4 fiscal year 2024-2025) shows 43% of 0-1 year and 11-month-old children are accessing the service. This increased to 68% for 0-4 year and 11-month-olds. Engagement was lower in Cantley compared to other communities, especially at age 0-1 years and 11 months (26%). Engagement increases to 58% when including all ages up to 0-4 years and 11 months but Cantley remained lower than the average when compared to other communities. When looking at the average yearly access and engagement figures from Central Family Hubs across Central communities (including all ages) the data shows access (81%) and engagement (66%) is higher than Cantley's most recently available quarterly data.

	0-8 weeks	0-1 year and 11 months	0-4 years and 11 months
Membership	40%	54%	65%
Access	NA	43%	68%
Engagement	NA	26%	58%

Table 2. Family Hub membership, access and engagement figures from Cantley Q4 fiscal year 2024-25. City of Doncaster Council, 2025

	Central Family Hubs
Membership	84%
Access	81%
Engagement	66%

Table 3. Central Locality Family Hub children's membership, access and engagement figures across all ages fiscal year 2024/25, City of Doncaster Council, 2025

There are several factors that could contribute to membership, access and engagement figures which must be considered when interpreting data. A complex relationship exists between socioeconomic factors including deprivation as well as other indicators which influence these rates.

Family Hubs facilitate 2-Year-Old Funding Entitlement for families which provides up to 15 hours of free early education or childcare per week for 38 weeks of the year. The latest data from Summer 2025 indicates 62.4% of eligible children in Doncaster have taken up 2-year-old funding when recorded at the start of term, this was 50% for Cantley. When looking at late starters for the same year, Doncaster saw 64% take-up in comparison to 52.9% in Cantley. 2-year-old funding uptake is lower across Central Family Hubs in Summer 2025 at the beginning of term (54.5%) and for late starters (56.4%) compared to Doncaster (62.4% and 64% respectively).

Physical Activity

Mosaic data shows a small percentage of the population in Town Centre do not engage in any moderate intensity physical activity. Please see [appendix](#) for more information on mosaic data. This falls in line with Acorn data which shows 19% of Town Centre residents have reported never engaging in moderate intensity physical activity. More information on the Acorn profile can be found in the [appendix](#).

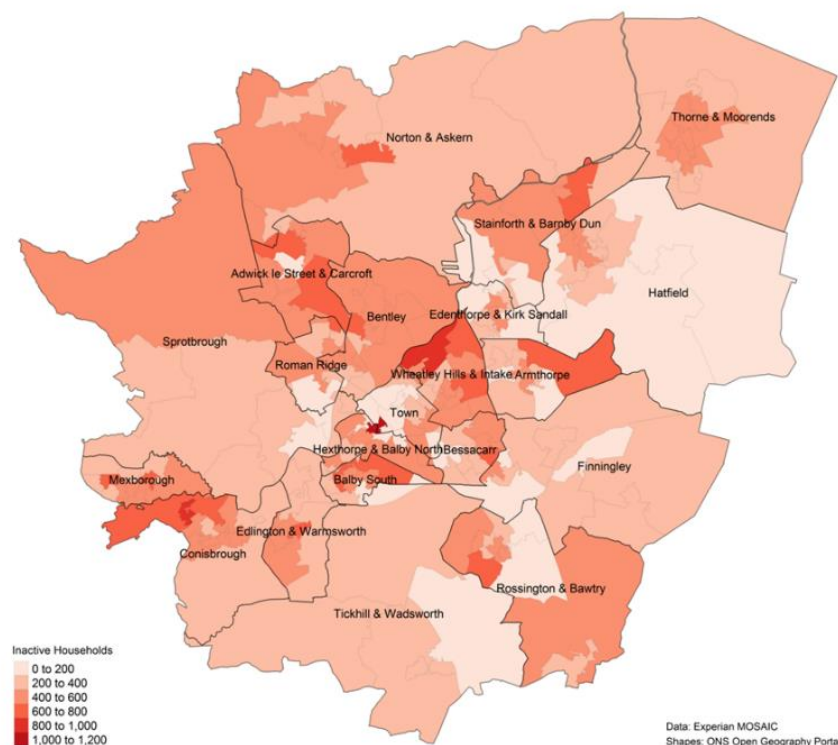


Figure 21. Levels of inactivity within households across Doncaster, Get Doncaster Moving, 2023

Physical Activity Children and Young People

Data from the Pupil Lifestyle Survey 2024 reports 20% of children are physically active one or two days a week, whilst 34% reported as active on three of four days and 44% on five or more occasions during the week. The main reason reported why children did not take part in physical activity is that they get too hot and tired (43%) and that they feel shy about their body (35%), followed by preferring to do other things (26%).

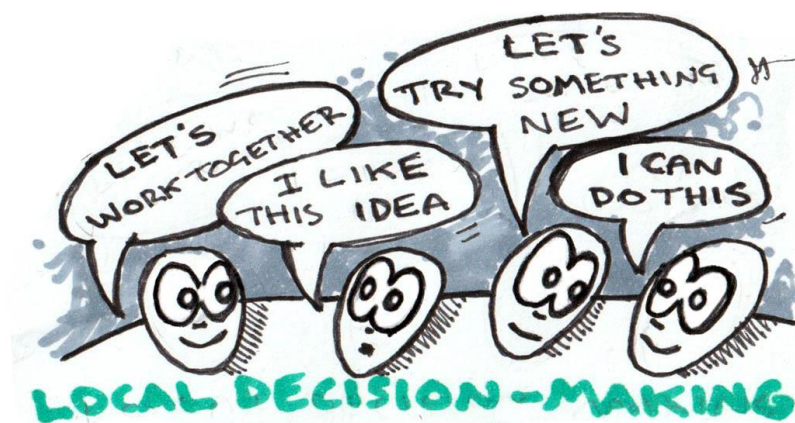
Green Spaces and Parks

There are 3 main parks and play areas located in Cantley – Personage Meadow, Acacia Road play area and Cantley Park, all are easily accessible to residents. The parks consist of toddler and junior play areas, multi-use games area, playing fields, tennis courts, sports pitches, bowling green and outdoor gym equipment.

Cantley Park has recently undergone consultation over the Summer 2025. A survey from residents and stakeholders has been used to plan and deliver changes to the park including improvements to Cantley Park Pitch and Putt Golf Course. Work is planned for Spring 2026 to install winter trees, improve tee maps and install new putt flags.

Over summer 2025, a number of pop-up disc golf events took place within Cantley Park with Get Doncaster Moving and Well Doncaster which were positively received by the local community.

The addition of disc golf – and the improvements being made to the pitch and putt facility - will allow more people to use the space, have more choice of activities to choose from within the park, and contribute to making Cantley Park a more vibrant place for all park visitors.



Community Information

Population and Diversity

Cantley Population size

- 7,100

In the 2021 Census 91.1% of residents in Cantley identified themselves as white, slightly less than Doncaster (93.1%). There is a significantly higher number of residents in Cantley who identify as Asian, Asian British or Asian Welsh (3.9%) compared to Doncaster (2.9%). 88.6% of residents were born in the UK and only 0.5% have lived in the area less than 2 years, this is significantly lower than Doncaster (1.2%).

Age profile

Working age adults make up the largest proportion of the population, followed by the 3rd highest proportion of people at retirement age. The census 2022 data shows that Bessacarr has a higher rate of elderly residents living in the community.

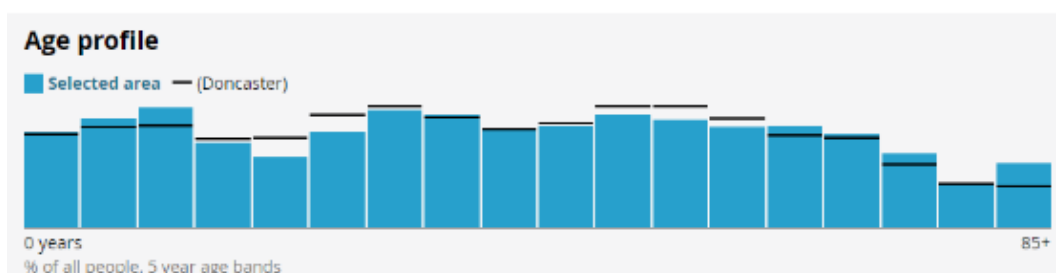


Figure 22. Age profiles of Cantley Community, ONS, 2021

Housing

There are 3100 households in Cantley. The majority (47.1%) of housing in Cantley are three-bedroom properties, significantly lower than Doncaster (53%). When looking at housing tenure, 28.4% own their home outright which is significantly lower than Doncaster (33.6%). 27.9% own with a mortgage which is slightly lower than Doncaster at 29.6%.

There is a significantly higher rate of social housing in Cantley (28.9%) compared to Doncaster (17%). St Leger Homes is the main provider of Doncaster's social housing. There is a total of 983 St Leger Home properties in Cantley, the housing stock is mainly comprised of two and three bed houses. Most occupiers are working age (26-65 years) and 405 are over 65 years old. There are 8 homeless family properties in Cantley. In 2021-22 rent areas for Cantley stood at £77,632 and increased to £100,113 in 2022-

23 which was the 7th highest in the borough that year. More recently, rent arrears have fallen dramatically; in fiscal year 2023/24 rent arrears reduced to £1,871.14 and continued to fall to £1,129.86 the following year (2024/25).

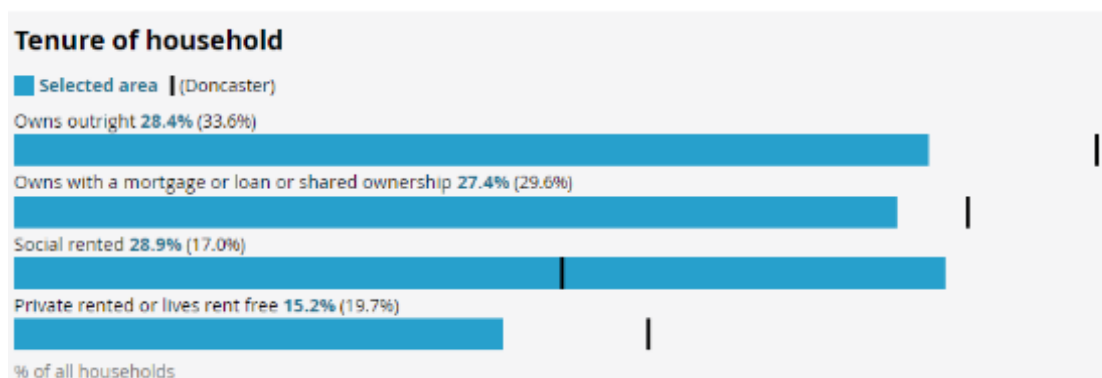


Figure 23. Tenure of household in Bessacarr ward, ONS, 2021

Community Safety

Community safety remains a top priority for residents and stakeholders across Doncaster. Feedback from a range of engagement activities consistently highlights concerns around anti-social behaviour (ASB), crime, and perceptions of safety. People want cleaner, more vibrant and welcoming neighbourhoods, supported by effective policing, youth engagement, and thoughtful environmental design.

To help achieve this, we're committed to a city-wide approach that combines proactive and reactive measures through a layered crime prevention strategy—primary, secondary, and tertiary—designed to make every community safer.

If you'd like to stay informed or take action, you can find detailed crime statistics for your neighbourhood at www.police.uk. To report issues or concerns, visit www.yourlifedoncaster.co.uk/safer-city-how-to-report-issues.

Key Community Safety Priorities

The Safer Stronger Doncaster Partnership
We're working together to make Doncaster a safer, stronger place for everyone. The partnership focuses on six key priorities that tackle issues affecting our communities:

- **Reducing anti-social behaviour (ASB)** – making our streets and public spaces welcoming for all.
- **Reducing crime and re-offending** – supporting people to make positive choices and preventing repeat offences.
- **Tackling serious and organised crime** – protecting our communities from organised criminality and criminal networks.

- **Reducing substance and alcohol misuse** – helping people access support and reducing harm.
- **Tackling domestic and sexual abuse** – ensuring victims get the help they need and holding perpetrators to account.
- **Reducing violence and violent crime** – creating safer neighbourhoods for families and young people.

Together, these priorities aim to build a Doncaster where everyone feels safe and supported.

Community Voice / Key Safety Concerns

People in Central Doncaster told us that safety feels very mixed—some areas feel secure, while others are struggling with anti-social behaviour and environmental issues. Residents spoke about loitering, street drinking, and intimidation in certain hotspots, alongside concerns about fly-tipping and poorly maintained public spaces. Many said they want more visible policing and enforcement to tackle these problems and restore confidence. There’s also a call for better youth services and safe spaces to reduce disruption and give young people positive options. Overall, the community wants cleaner streets, stronger enforcement, and more opportunities to bring people together and rebuild pride in Central Doncaster.

Crime and Anti-Social Behaviour

Data provided by City of Doncaster (CDC) shows that the number of Anti-Social behaviour, early intervention, hate crimes and low-level crime in the Central locality is the second highest for Doncaster.

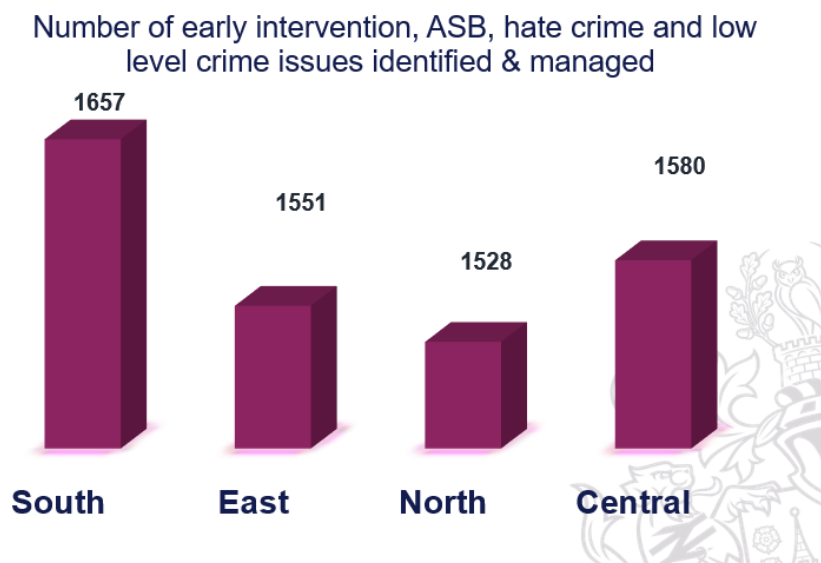


Figure 24. Number of Early Interventions, ASB, Hate Crimes and Low-Level Crime by Locality, City of Doncaster Council, 2024

Data shows that the Central Locality is the second highest locality in Doncaster for early interventions, ASB, hate crime and low-level crime. Of these incidents 94 of them are recorded in Bessacarr.

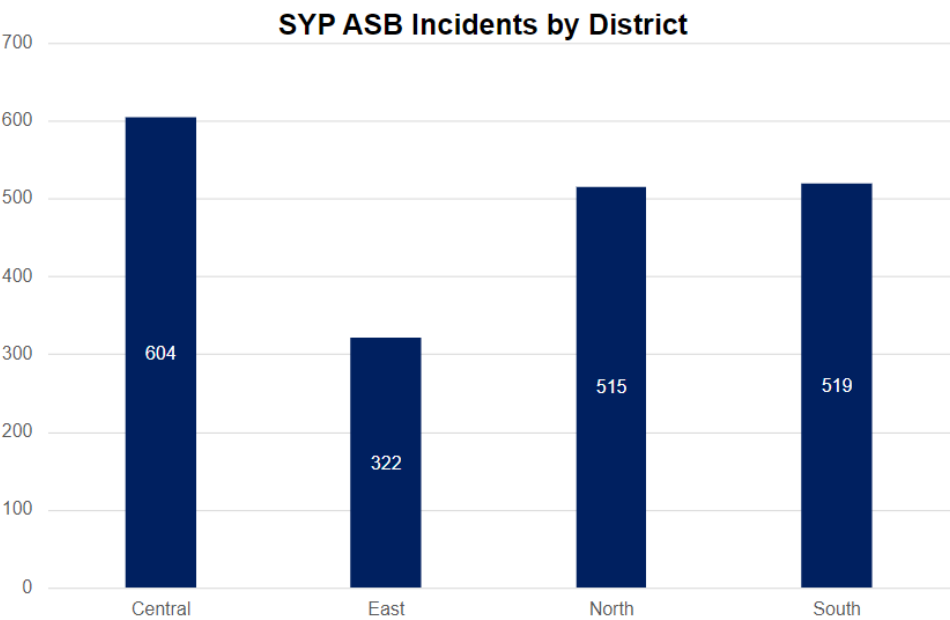


Figure 25. South Yorkshire Police Incidents By District, City of Doncaster Council, 2024

Through partnership working with South Yorkshire Police data has been provided of ASB incidents reported to the police. The Central Locality is currently the highest ASB reports for the whole of Doncaster with 604 recorded.

Wellbeing Service

This service is run by CDC. The Wellbeing Service helps residents with financial support, physical and mental health, housing, and social isolation to reduce the risk of escalating into social care services.

The table below show the top 5 wards accessing the Wellbeing Service for support from 2021-2025. Cantley and Bessacarr were within the top 5 wards seeking support in 2022-23 and the second highest in 2023/24.

Community Ranking for using service	2021-2022	2022-2023	2023-2024	2024-2025
1	Wheatley Intake	&Wheatley & Intake	Wheatley & Intake	Town
2	Rossington Bawtry	&Rossington Bawtry	&Bessacarr & Cantley	Hexthorpe and Balby North

3	Thorne & Moorends	Mexborough	Mexborough	Rossington
4	Adwick & Carcroft	Adwick & Carcroft	Hexthorpe & Balby North and Bentley	Thorne and Moorends
5	Town/City Ward	Bessacarr & Cantley	Rossington & Bawtry and Town/City Ward	Norton & Askern

Table 4. Top five wards using the Wellbeing Service, City of Doncaster Council, 2025

Cantley and Bessacarr	Theme Supported
1	Physical Health
2	Finances
3	Social Isolation

Table 5. Top three most common themes residents are accessing the Wellbeing Service for support, City of Doncaster Council, 2025

Community Investment

As of July 2025, there has been £12.3 million worth of investment delivered in the Central locality through Doncaster Delivering Together. Some of this investment has been successfully applied for by partners and Voluntary Community and Faith Sector (VCFS) groups. The top 3 areas of funding spend has gone to increasing community spirit (£879,798.09), mental health support and awareness (£594,269.79) and using and improving community assets (£562,444.14).

Bessacarr ward has had significant investment over the last few years, as of November 2025 the ward has received £221.25 worth of delivered projects. The top four areas of investment in Bessacarr have gone towards increasing community spirit, financial security, enabling positive lifestyle choices and mental health support. Some examples of community investment in Bessacarr ward are monies towards foodbank support, health and wellbeing support for adults, funds to provide warm spaces, youth activities through scout's groups and funding to support employability skills and wellbeing. The map below shows the areas of investment across Bessacarr ward, with the size of each point indicating the scale of investment.



Figure 26. Bessacarr ward community investment map, Doncaster Delivering Together, 2025

References

Armstrong, A.J., Holmes, C.M. and Henning, D., 2020. A changing world, again. How Appreciative Inquiry can guide our growth. *Social Sciences & Humanities Open*, 2(1), p.100038.

Ritchie, J., Spencer, L., O'Connor, W., & Lewis, J. (2003). *Carrying out qualitative analysis*. London: Sage.

Appendix

Well Doncaster

More information about Well Doncaster can be found on our website:

[Home | Well Doncaster](#)

Census 2021

The census is undertaken by the Office for National Statistics every 10 years and gives us a picture of all the people and households in England and Wales.

[Build a custom area profile - Census 2021, ONS](#)

[Census Maps - Census 2021 data interactive, ONS](#)

Public Health Data

Fingertips

This is a new fingertips profile that uses data from Local Health an existing PHE data tool. Local Health is a collection of quality assured health information presented for small geographical areas. By presenting data for small areas, Local Health provides evidence of inequalities within local areas. It supports targeted interventions to reduce such inequalities.

Local Health contains indicators related to:

- Population and demographic factors
- Wider determinants of health
- Health outcomes

It presents data for middle super output areas (MSOA), electoral wards, clinical commissioning groups (CCG), local authorities, and England as a whole.

Please note, as the Local Health tool was designed to allow users to map small area data, a mapping option has not been provided in this profile.

<https://fingertips.phe.org.uk/profile/local-health/data#page/0>

[Local Health - Public Health England - Reports: get a dashboard on a custom area](#)

Link to data- [Fingertips | Department of Health and Social Care](#)

Life expectancy and healthy life expectancy by ward: [Life expectancy by census ward](#)

Indices of Multiple Deprivation 2025 – statistical release, data files and reports: [English indices of deprivation 2025 - GOV.UK](#)

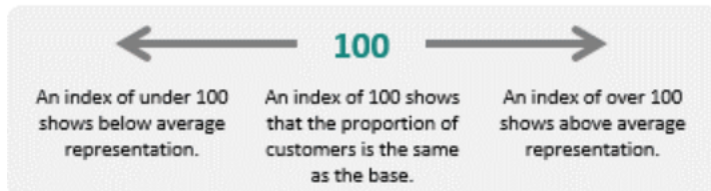
Acorn profiles

Wellbeing Acorn segments the population into 4 groups (Health Challenges; At Risk; Caution; Healthy) and 25 types describing the health and wellbeing attributes of each postcode across the country. By analysing significant social and health related behaviour, it provides precise information and an in depth understanding of upstream issues affected by current lifestyle traits

INTERPRETING THE REPORT

The Wellbeing Acorn profile report helps you understand the underlying demographics, lifestyle and health attributes of your customers and service users by comparing their Wellbeing Acorn profile to a base (e.g. UK population, area or other customer groups).

INDEX



The Wellbeing Acorn Profile contains 12 variables that are indicators of Disability or Infirmity in the population and 9 variables related to unhealthy Behaviours. The average score measured against the base profile of Yorkshire and the Humber is 100. A value above 100 indicates that the area population is overrepresented for this characteristic, below 100 the value is less than the average or underrepresented.

Physical Activity

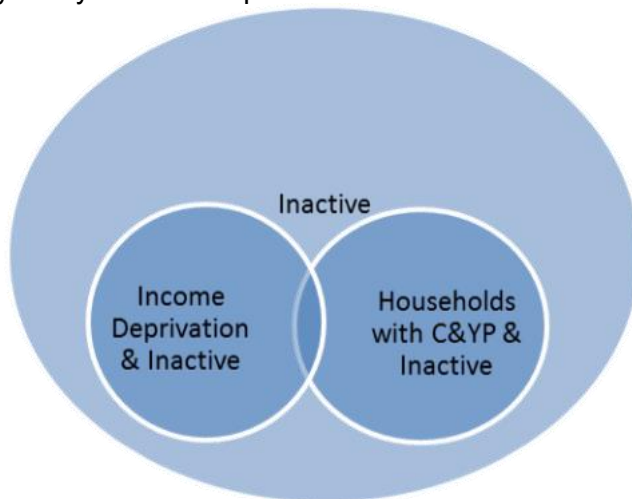
Get Doncaster Moving survey

<https://getdoncastermoving.org/uploads/behavioural-insight-phase-one-summary-report.pdf?v=1644581925>

Mosaic data

Mosaic Public Sector classifies the UK population into one of 66 types and 15 groups through a detailed and accurate understanding of each citizen's demographics, lifestyles, behaviours and location.

The Physically Inactive Population of Doncaster



The MOSAIC types who “Do not exercise” and “Do not take part in Sport” were searched and three priority groups have been identified through work with strategic partners as part of the development of Doncaster’s Physical Activity Strategy. The three priority groups are:

- The Inactive
- Families with children and young people
- People living in income deprivation

These groups are cross-referenced against the inactivity list allowing for the identification of MOSAIC types which are both likely to be inactive and living in deprivation as well as inactive and from households with children and young people.

Link to the Get Doncaster Moving strategy; [Let's Get Moving! | Get Doncaster Moving](#)

Pupil Lifestyle Survey

[Pupil Lifestyle Survey - Healthy Schools \(healthylearningdoncaster.co.uk\)](https://healthylearningdoncaster.co.uk)

Power BI – Joint Strategic Needs Assessment

The Joint Strategic Needs Assessment (JSNA) is a process that identifies the current and future health and wellbeing needs of a local population. The dashboards show information about the employment, health, and wellbeing of people in Doncaster. We use this information to inform our policies and strategies to improve the lives of everyone in the Doncaster area.

[Joint Strategic Needs Assessments - Team Doncaster](#)

Community Safety

The Safer Stronger Doncaster Partnership Community Safety Strategy can be found at - [The Safer Stronger Doncaster Partnership - City of Doncaster Council](#)

If you'd like to stay informed about crime and ASB in your community, you can find detailed crime statistics for your neighbourhood at www.police.uk.

If you would like further information about making Doncaster a Safer City please see - [Making Doncaster a Safer City - YourLifeDoncaster](#)

To report issues or concerns, visit www.yourlifedoncaster.co.uk/safer-city-how-to-report-issues

Community Investment:

Investment Map: [Doncaster Delivering Together Investment Plan - Team Doncaster](#)

Interactive Map

To access and identify assets at ward and locality level please use the following interactive map: <https://www.google.co.uk/maps/d/viewer?mid=17BayPsliJ1OUq6U4OFbk9FKLYL2-wDZN&ll=53.50909620569456%2C-1.1365028000000032&z=14>